

Planning and Institutional Research

[www.pir.ilstu.edu](http://www.pir.ilstu.edu) ~ 309.438.8393

December ~ 2006



ILLINOIS STATE UNIVERSITY

**FactBook**



December 2006

Dear Colleague:

I am please to present the twentieth annual *FactBook* prepared by the Planning and Institutional Research office. The *FactBook* contains a collection of useful information designed to answer frequently asked questions about Illinois State University, and highlights the University's progress in advancing the goals articulated in *Educating Illinois* - our action plan for distinctiveness and excellence.

Much has changed since Illinois State University opened its doors to students in 1857. The University first conferred undergraduate degrees in 1860, began offering master's degree programs in 1943 and introduced doctoral work in 1962. Currently, the University offers sixty-seven undergraduate programs, forty master's programs, eight doctoral programs, a Specialist in School Psychology and seven graduate level certificates. In fiscal year 2006, the University conferred 4,975 degrees - 4,158 baccalaureates, 755 master's, 52 doctorates and 10 certificates. A total of 20,261 students are enrolled this fall - 88 percent of whom are enrolled in undergraduate programs.

While the University has undergone many changes, our core values have remained steadfast. These values - individualized attention, public opportunity, active pursuit of learning and scholarship, diversity, and innovation - remain the foundation for everything we do. The goals articulated in *Educating Illinois* emanate from these values, and collectively focus the institution on the actions necessary to be a first-choice public university for high-achieving, motivated students who seek individualized educational experiences combined with the resources of a large university. Data provided in the *FactBook* show that the University is attracting academically prepared students, and that our students are continuing and completing their education at historic rates.

I encourage you to use this publication to familiarize yourself with the basic facts about Illinois State University. Data are presented at the University and College level; information by department and major is available on-line at [www.pir.ilstu.edu](http://www.pir.ilstu.edu). Additional information on *Educating Illinois* is available at [www.educatingillinois.ilstu.edu/](http://www.educatingillinois.ilstu.edu/). If you have questions about the University or *Educating Illinois*, please contact the Planning and Institutional Research office by telephone at (309) 438-8393 or by e-mail at [pir@ilstu.edu](mailto:pir@ilstu.edu).

Sincerely,

A handwritten signature in black ink, appearing to read "Al Bowman".

Al Bowman  
President



# TABLE OF CONTENTS

## TABLE OF CONTENTS

### QUICK GLANCE

Board of Trustees & University Administrators .....	1
Deans, Department Chairs, and School Directors ~ Fall 2006 .....	2
University Facts ~ Fall 2006 .....	3
Undergraduate Students ~ Fall 2006 .....	4
Graduate Students ~ Fall 2006 .....	5
College Enrollment by Racial/Ethnic Designation ~ Fall 2006 .....	6
Departmental Faculty Characteristics ~ Fall 2006 .....	7
Strategic Plan <i>Educating Illinois 2003-2010</i> .....	8
Endowed Chairs ~ Fall 2006 .....	9

### ORGANIZATIONAL CHARTS

President ~ C. Alvin Bowman .....	11
Vice President Academic Affairs & Provost ~ John W. Presley .....	12
Vice President for Finance & Planning ~ Stephen M. Bragg .....	13
Vice President for Student Affairs ~ Steven L. Adams .....	14
Vice President for University Advancement ~ Dianne Ashby .....	15

### STUDENTS

#### New

Applications, Acceptances, & Enrollments ~ Fall 2006 .....	17
New Beginning Freshmen ~ Fall 2006 .....	18
American College Testing (ACT) ~ Fall 2002 through Fall 2006 .....	19
New Beginning Freshmen ~ Fall 2000 through Fall 2006 .....	20
New Undergraduate Transfers ~ Fall 2000 through Fall 2006 .....	21

#### Enrollment

Gender, Level, & Hours ~ Fall 2000 through Fall 2006 .....	22
College, Racial/Ethnic Designation & Level ~ Fall 2006 .....	23
College & Level ~ Fall 2000 and Fall 2006 .....	24
Racial/Ethnic Designation & Level ~ Fall 2000 and Fall 2006 .....	25
Class and Age ~ Fall 2006 .....	26
College and Gender ~ Fall 2000 and Fall 2006 .....	27
International Students ~ Fall 2000 and Fall 2006 .....	28
On-and Off-Campus & Class ~ Fall 2000 and Fall 2006 .....	29
Level ~ Fall 1996 through Fall 2006 .....	30
Class, Gender & Racial/Ethnic Designation ~ Fall 2006 .....	31
Class & Credit Hours ~ Fall 1996 through Fall 2006 .....	32



# TABLE OF CONTENTS (Continued)

## STUDENTS

### Enrollment (Continued)

Illinois Residents by County ~ Fall 2006 .....	33
State of Residence ~ Fall 2006 .....	34
International Students ~ Fall 2006 .....	35

### Degrees

College ~ Fiscal Year 2000 through Fiscal Year 2006 .....	36
Undergraduate, Gender & Racial/Ethnic Designation .....	37
Graduate, Level & Racial/Ethnic Designation .....	38

### Other

Class Size ~ Fall 2003 through Fall 2006 .....	39
Time-To-Degree ~ Fall 1995 through Fall 2002 .....	40
Retention and Graduation Rates .....	41

## FACULTY/STAFF

Employee Category Full-Time Equivalency ~ Fall 2005 and Fall 2006 .....	43
Type, Gender and Racial/Ethnic Designation ~ Fall 2006 .....	44
Rank and Racial/Ethnic Designation ~ Fall 2006 .....	45
Full-Time Equivalent (FTE) by College, Gender & Tenure Status ~ Fall 2005 and Fall 2006 .....	46
College & Percent Appointment ~ Fall 2000 through Fall 2006 .....	47
Tenured/Tenure Track Departmental Faculty, Age by Rank ~ Fall 2006 .....	48
Fall to Fall Retention Rates .....	49
Fall to Fall Retention Rates ~ Minority .....	50

## RESOURCES

Total Expenditures & Mandatory Transfers ~ Fiscal Years 2002 through 2006 .....	51
Historical State Appropriations and University Income Fund ~ Fiscal Years 2003 through 2007 .....	52
Current Funds Revenues by Source ~ Fiscal Years 2005 and 2006 .....	53
Sponsored Research, Instruction, Creative Works & Service .....	54
Student Financial Aid & Institutional Support ~ Fiscal Year 2006 .....	55
Undergraduate Student Tuition and Fee Rates .....	56
Graduate Student Tuition and Fee Rates .....	57

## REFERENCE

Undergraduate Program Inventory ~ Fall 2006 .....	59
Graduate Program Inventory ~ Fall 2006 .....	60
Peer Institutions .....	61



# TABLE OF CONTENTS (Continued)

## UNIVERSITY DEFINITIONS

Student Terms	.....	62
Employee Terms	.....	63
Other Terms	.....	64

## CAMPUS MAP



ILLINOIS STATE UNIVERSITY

# QUICK GLANCE

## DID YOU KNOW?

Illinois State Normal University was established in 1857 as the first public university in Illinois.

"Normal" was dropped in 1964 to become Illinois State University.



Fell Hall Honor Residents ~ 1920



# QUICK GLANCE

## BOARD OF TRUSTEES & UNIVERSITY ADMINISTRATORS

### Board of Trustees

	<u>Term Expires</u>
Carl Kasten - Chair	January 2007
J. D. Bergman	January 2011
Anne Davis	January 2011
Betty Kinser	January 2011
Joanne Maitland	January 2007
Michael McCuskey	January 2011
Stanley Ommen	January 2007
Brett Schnepfer	Student Trustee

### Current Administrators

C. Alvin Bowman	President
John W. Presley	Vice President of Academic Affairs and Provost
Stephen M. Bragg	Vice President for Finance and Planning
Steven L. Adams	Vice President for Student Affairs
Dianne Ashby	Vice President for University Advancement

### Past and Current Presidents

Charles E. Hovey	1857-1862	Samuel J. Braden	1967-1970
Richard Edwards	1862-1876	David K. Berlo	1971-1973
Edwin C. Hewett	1876-1890	Gene A. Budig	1973-1977
John W. Cook	1890-1899	Lloyd Watkins	1977-1988
Arnold Thompkins	1899-1900	Thomas Wallace	1988-1995
David Felmley	1900-1930	David A. Strand	1995-1999
Harry A. Brown	1930-1933	Victor John Boschini Jr.	1999-2003
Raymond W. Fairchild	1933-1955	C. Alvin Bowman	2003-Present
Robert G. Bone	1956-1967		



# QUICK GLANCE

## DEANS, DEPARTMENT CHAIRS, AND SCHOOL DIRECTORS~ FALL 2006

### Applied Science and Technology

Agriculture  
School of Information Technology  
Criminal Justice Sciences  
School of Kinesiology and Recreation  
Health Sciences  
Family and Consumer Sciences  
Technology  
Military Science

### Arts and Sciences

Biological Sciences  
Chemistry  
Economics  
English  
Languages, Literatures and Cultures  
Geography-Geology  
History  
School of Communication  
Mathematics  
Philosophy  
Physics  
Politics and Government  
Psychology  
School of Social Work  
Sociology and Anthropology  
Speech Pathology and Audiology

### Dr. Jeffery A. Wood

Dr. Patrick D. O'Rourke  
Dr. Terry L. Dennis  
Dr. Thomas Ellsworth  
Dr. David Q. Thomas  
Dr. Marilyn J. Morrow  
Dr. Connor M. Walters  
Dr. Richard A. Boser  
Major Eugene Snyman

### Dr. Gary A. Olson

Dr. H. Tak Cheung  
Dr. Clifford E. Dykstra  
Dr. James Payne  
Dr. Timothy Hunt  
Dr. Daniel L. Everett  
Dr. David H. Malone  
Dr. William R. Biles  
Dr. Larry W. Long  
Dr. George F. Seelinger  
Dr. Christopher D. Horvath  
Dr. Richard F. Martin, Jr.  
Dr. Jamal R. Nassar  
Dr. David P. Barone  
Dr. Wanda Bracy  
Dr. Nick G. Maroules  
Dr. Walter J. Smoski

### Business

Accounting  
Finance, Insurance, and Law  
Management & Quantitative Methods  
Marketing

### Education

Curriculum and Instruction  
Educational Administration & Foundations  
Special Education

### Fine Arts

School of Art  
School of Music  
School of Theatre

### Mennonite College of Nursing

Nursing

### University Libraries

### Dr. Dixie Mills

Dr. Gerald McKean  
Dr. William L. Scott  
Dr. John A. Lust  
Dr. Timothy A. Longfellow

### Dr. Deborah J. Curtis

Dr. Barbara L. Nourie  
Dr. Patricia H. Klass  
Dr. James R. Thompson

### Mr. Lonny J. Gordon

Dr. Paul W. Borg  
Dr. Stephen B. Parsons  
Dr. Donald E. Lacasse Jr.

### Dr. Nancy Ridenour

Dr. Nancy Ridenour

### Ms. Cheryl A. Elzy





# QUICK GLANCE

## UNIVERSITY FACTS ~ FALL 2006

### On-Campus Headcount Enrollment

Undergraduate	17,842
Graduate	2,419
Total	20,261

### Enrollment by Gender

Male	8,551
Female	11,710

### Enrollment by Racial/Ethnic Designation

Am. Indian/Alaskan	60
Black/Non-Hispanic	1,159
Asian/Pacific Islander	368
Hispanic	646
White/Non-Hispanic	16,878
Not Reported	711
Non-Resident Alien	439

### New Beginning Freshmen Profile

2006 Cohort	3,200
Average ACT score	23.9
Graduated in top ten percent of high school class.	11.3%

### Degrees Conferred in Fiscal Year 2006

Baccalaureate	4,158
Masters	755
IBHE Approved Certificates	10
Doctoral	52
Total	4,975

### Graduate Certificates Awarded

### Persistence and Graduation Rates

Freshmen returning for second fall.	84.0%
6-Year Graduation rate before 7th fall.	64.0%

### Living Alumni

Illinois	108,316
Other U.S. States	41,815
Foreign Countries	787
Locations Unknown	13,740
Total	164,658

### Student Financial Aid

Seventy-four percent (14,964) of all students received financial support in Fiscal Year 2006.

### Student Housing

34.3 percent of students live in the residence halls; another 1.3 percent live in University-owned housing

### University Employees

Departmental Faculty	1,113
Non-Departmental Faculty	22
Library Faculty	28
Lab School Faculty	99
Managerial/Administrative	68
Professional	629
Civil Service	1,382
Total	3,341

### Milner Library Holdings

Volumes	1,636,789
Printed and electronic periodicals	18,684

### Research and Sponsored Programs

Proposals Awarded	250
Funds Awarded	\$19.1 million

### Grounds, Buildings, and Facilities

Approximately 970 acres; 143 buildings. The estimated replacement value of the facilities is \$1.1 billion.

### Fall 2006 Tuition & Fees Per Credit Hour -

#### New Students (State Resident)

Undergraduate	\$257.45
Graduate	\$237.45

### Fiscal Year 2006 Operating Expenditures

\$283.5 million

### University Accreditation Agencies

Higher Learning Commission of the North Central Association of Colleges and Schools; and National Council for Accreditation of Teacher Education.

### Student to Faculty Ratio

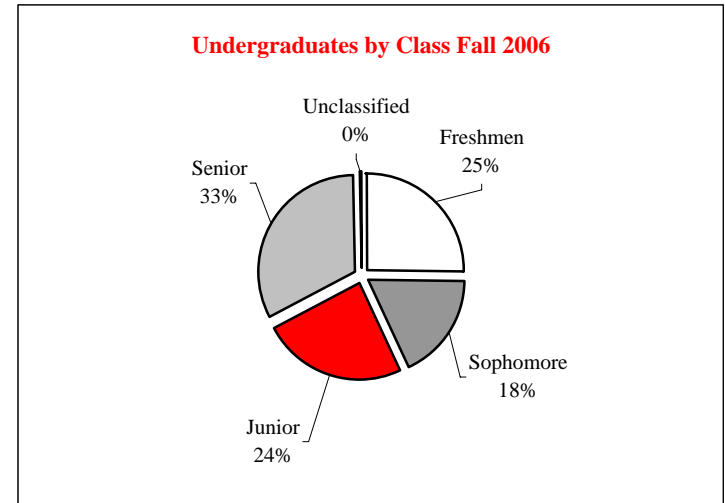
19:1



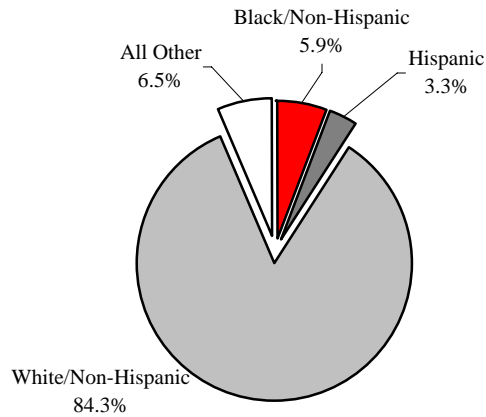
# QUICK GLANCE

<u>Class</u>	<u>Average Age</u>	<u>Headcount</u>	<u>FTE</u>
Freshmen	18.4	4,492	4,340
Sophomore	19.8	3,176	3,078
Junior	21.5	4,350	4,053
Senior	23.4	5,766	5,043
Unclassified	26.3	58	25
Total	21.0	17,842	16,538

## UNDERGRADUATE STUDENTS ~ FALL 2006



### Undergraduate Enrollment by Racial/Ethnic Designation Fall 2006



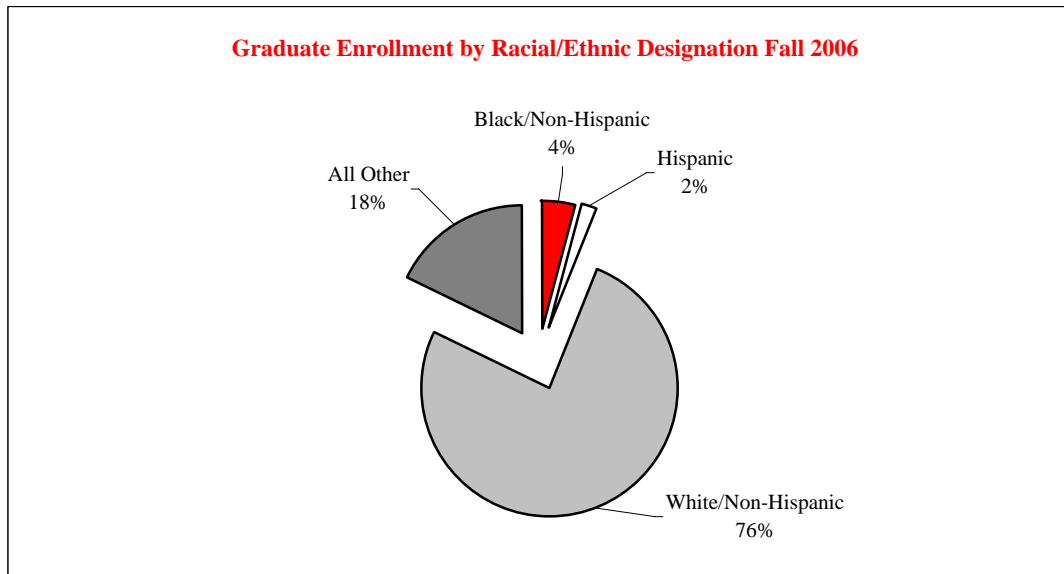
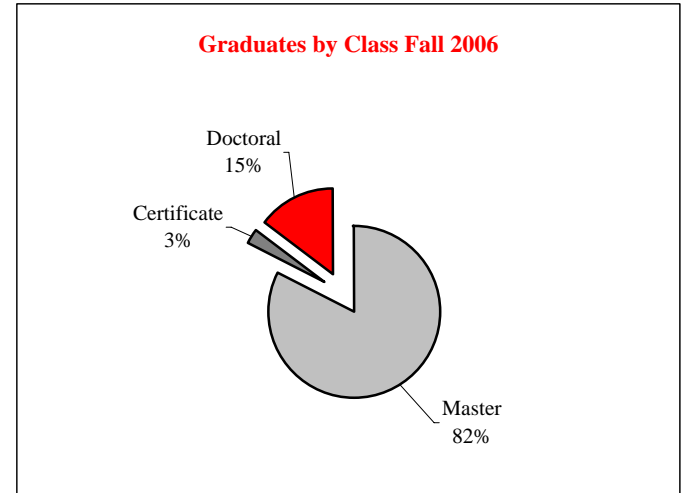
<u>Racial/Ethnic Designation</u>	<u>Headcount</u>
American Indian/Alaskan Native	54
Black/Non-Hispanic	1,059
Asian/Pacific Islander	316
Hispanic	597
White/Non-Hispanic	15,035
Not Reported	644
Non-Resident Alien	137
Total	17,842



# QUICK GLANCE

## GRADUATE STUDENTS ~ FALL 2006

<u>Class</u>	<u>Average Age</u>	<u>Headcount</u>	<u>FTE</u>
Master	30.0	1,994	1,548
Certificate	32.6	68	44
Doctoral	36.9	357	228
Total	31.1	2,419	1,820



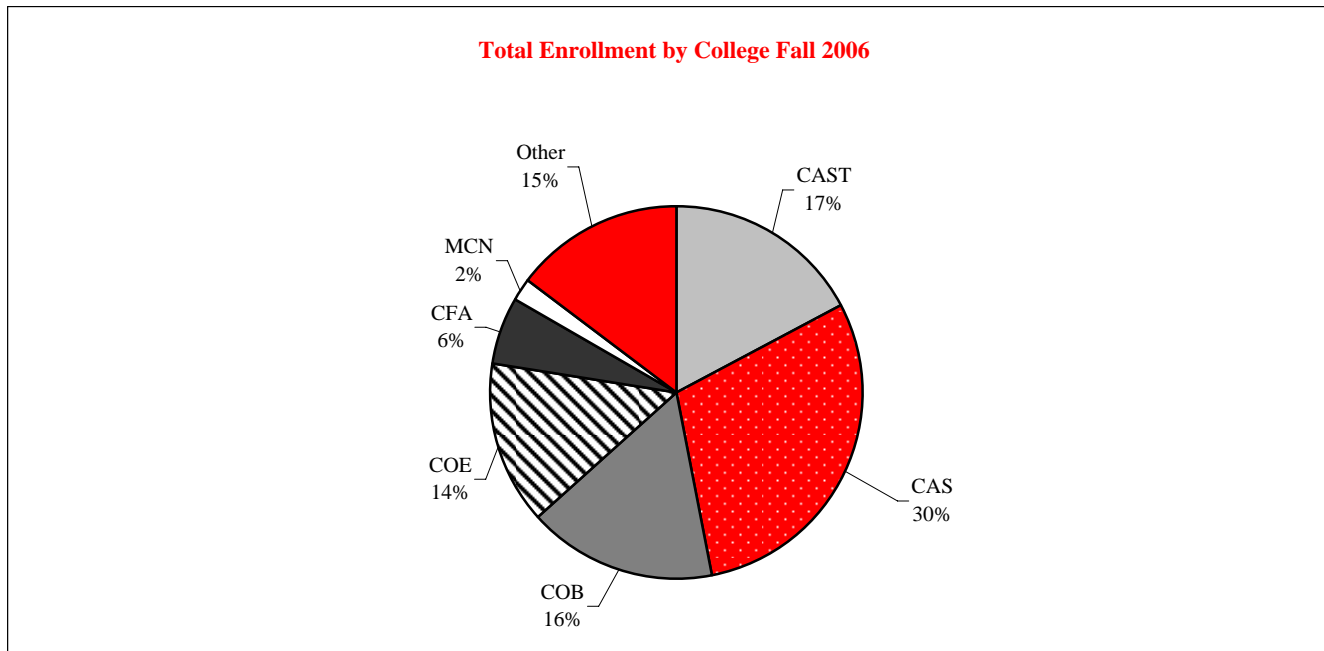
<u>Racial/Ethnic Designation</u>	<u>Headcount</u>
American Indian/Alaskan Native	6
Black/Non-Hispanic	100
Asian/Pacific Islander	52
Hispanic	49
White/Non-Hispanic	1,843
Not Reported	67
Non-Resident Alien	302
Total	2,419



# QUICK GLANCE

## COLLEGE ENROLLMENT BY RACIAL/ETHNIC DESIGNATION ~ Fall 2006

	American Indian/ Alaskan Native	Black Non- Hispanic	Asian/Pacific Islander	Hispanic	White Non- Hispanic	Non-Resident Aliens	Not Reported	Total
<u>All Students</u>								
Applied Science and Technology	10	189	37	95	2,970	82	100	3,483
Arts and Sciences	17	304	112	199	4,989	205	216	6,042
Business	5	143	79	84	2,793	60	117	3,281
Education	10	90	41	66	2,588	18	84	2,897
Fine Arts	5	51	26	44	952	32	71	1,181
Mennonite College of Nursing	1	8	11	6	352	3	13	394
Other	12	374	62	152	2,234	39	110	2,983
Total	60	1,159	368	646	16,878	439	711	20,261





# QUICK GLANCE

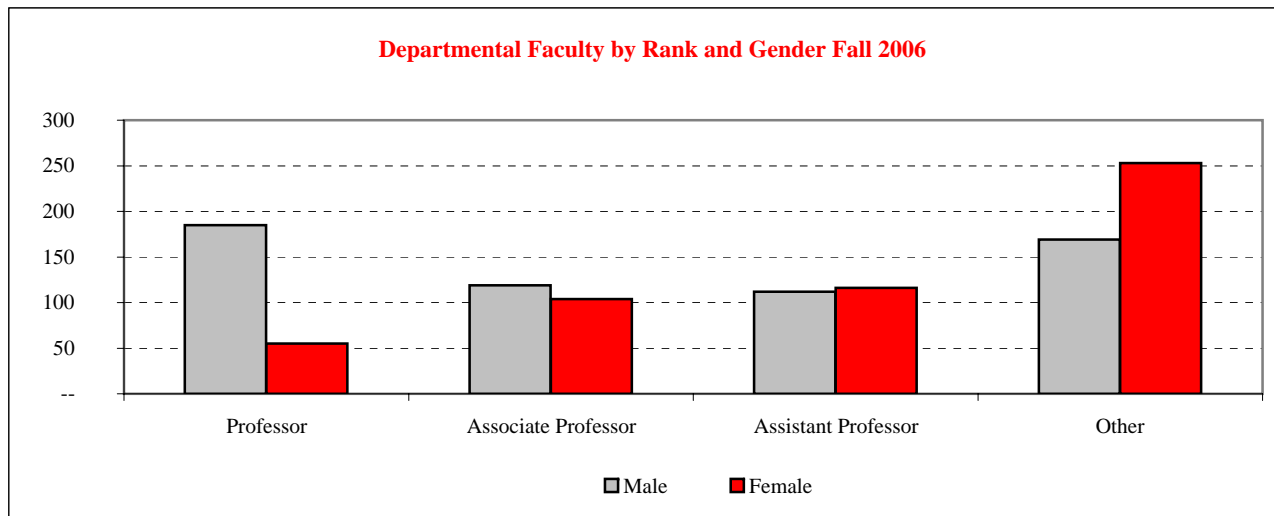
## DEPARTMENTAL FACULTY CHARACTERISTICS ~ FALL 2006

<u>Rank</u>	<u>Gender</u>		
	<u>Male</u>	<u>Female</u>	<u>Total</u>
Professor	185	55	240
Associate Professor	119	104	223
Assistant Professor	112	116	228
Other	169	253	422
Total	585	528	1,113

<u>Rank</u>	<u>Percent Appointment</u>		
	<u>Full-Time</u>	<u>Part-Time</u>	<u>Total</u>
Professor	240	--	240
Associate Professor	223	--	223
Assistant Professor	228	--	228
Other	165	257	422
Total	856	257	1,113

<u>Racial/Ethnic Designation</u>	<u>Number</u>	<u>Percent</u>
American Indian/Alaskan	3	0.3
Black/Non-Hispanic	31	2.8
Asian/Pacific Islander	62	5.6
Hispanic	21	1.9
White/Non-Hispanic	973	87.4
Non-Resident Alien	20	1.8
Unknown	3	0.3
Total	1,113	100.0

<u>Years of Service</u>	<u>Tenure Status</u>		
	<u>Track</u>	<u>Non-Tenure</u>	<u>Total</u>
0-3 Years	146	249	395
4-6 Years	140	57	197
7-9 Years	107	63	170
10-14 Years	76	24	100
15-19 Years	93	11	104
20 or More Years	129	18	147
Total	691	422	1,113





# QUICK GLANCE

## STRATEGIC PLAN



### Our Mission

We at Illinois State University work as a diverse community of scholars with a commitment to fostering a small-college atmosphere with large-university opportunities. We promote the highest academic standards in our teaching, our scholarship, and the connections we build between them. We devote all of our resources and energies to creating the most supportive and productive community possible to serve the citizens of Illinois and beyond.

### Our Heritage

The first public university in Illinois, Illinois State University was founded in 1857 as a normal university to prepare the state's teachers. Our institution has a rich heritage as the state's leader in all facets of teacher education – from classroom instruction to educational administration and national policy setting. Illinois State is the only public, doctoral research university in Illinois, offering more than 160 major/minor options in six colleges. The university's early emphasis on teacher preparation is reflected in our values-based commitment to creating an optimal learning environment for all Illinois State students, whether undergraduate or graduate, on campus or off campus.

### Our Vision & Values

By acting on our values in every respect, Illinois State University will come to occupy a unique position of strength and visibility among the institutions of higher education in Illinois, nationally, and internationally. Illinois State University will continue to be the first-choice public university in Illinois for high-achieving, motivated students who seek an individualized educational experience combined with the resources of a large university.

**Individualized Attention:** Providing the supportive environment characteristic of a small college through an innovative general education program, strong student-faculty-staff connections, superior student services, and a focus on each student as an individual, with unique educational needs and potential: Illinois State is a campus dedicated to placing the learner at the center of teaching and scholarship.

**Public Opportunity:** Assuring students access to the educational, research, and service opportunities characteristic of a large university, including a wide range of high-quality programs, faculty mentors who are scholars and creative artists of repute in their disciplines, and the support of outstanding facilities, technologies, and library resources.

**Active Pursuit of Learning and Scholarship:** Working with students as partners in their educational development inside and outside of the classroom so that students come to appreciate learning as an active lifelong process; contributing new knowledge through research, creative artistry, and other forms of individual scholarship in which all students, faculty, and staff may participate.

**Diversity:** Encouraging community and an informed respect for differences among students, faculty, and staff by fostering an inclusive environment characterized by ethical behavior and social justice that prepares students to be fully engaged participants in a global society; a diverse faculty, and staff mentoring a diverse student population, enhancing pedagogical, research, and service functions.

**Innovation:** Supporting disciplinary excellence and personal growth of students, faculty, and staff through knowledge development and innovative applications in undergraduate and graduate study, pedagogy, research, creative activities, and public service.



## QUICK GLANCE

## ENDOWED CHAIRS ~ FALL 2006

Endowed chairs are a hallmark of a great university. The tradition of an endowed chair in education dates back to 1502 when the mother of Henry VII established the Lady Margaret Professorship of Divinity at Oxford. More than 200 years later the first endowed chair was established in America, the Hollis Professorship of Divinity created in 1721 at Harvard.

Endowed chairs offer many benefits to the donor, the honored scholar and students. An endowed chair offers Illinois State University the opportunity to offer a more diverse curriculum that is not dependent on usual income sources such as tuition and state funds. Endowed chairs also offer the means to attract, retain and to honor distinguished faculty.

The esteemed scholars who are endowed chairs receive recognition for personal achievements in their fields and the satisfaction that the University supports research and teaching in their discipline. Students are challenged and guided by exposure to the highest quality academic leadership.

Donors who generously have endowed chairs know that they are not only ensuring academic excellence in teaching and research today, but that their donation is truly a gift to the future of the University. Endowed chairs are living memorials, perpetuating the donor's name and signifying a permanent commitment to quality education.

Illinois State University has the following Endowed Chairs:

Tom and Janet Andes Endowed Chair for General Education (established 2001), Dr. Kenton Machina (2001-2005) (currently vacant)

K. Patricia Cross Endowed Chair in the Scholarship of Teaching and Learning (established 2001), Dr. Kathleen McKinney

Kara Peters Endowed Chair in Special Education Assistive Technology (established 2002), Dr. Phil Parette

Edmundson-Miller Endowed Chair of Insurance and Risk Management (established 2002), Dr. Richard MacMinn







ILLINOIS STATE UNIVERSITY

# ORGANIZATIONAL CHARTS

DID YOU KNOW?

Old Main was the first building on what is now called the quad.

The first Illinois State University classroom was Major's Hall in downtown Bloomington.



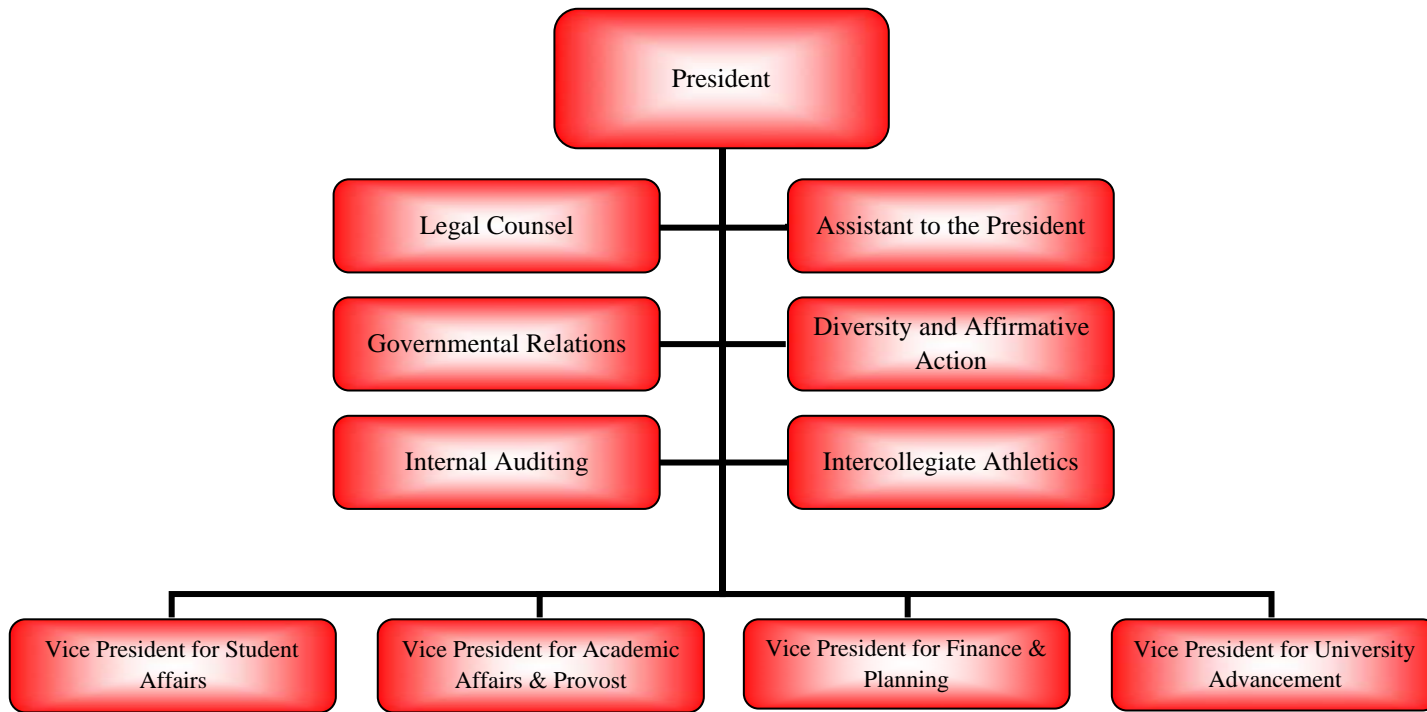
Old Main 1907



# ORGANIZATIONAL CHARTS

PRESIDENT ~ C. ALVIN BOWMAN

C. Alvin Bowman is President of Illinois State University. Dr. Bowman joined Illinois State University in 1978 as a faculty member in Speech Pathology and Audiology. He was appointed Chairperson of Speech Pathology and Audiology in 1994 and served as Interim Provost during the 2002-2003 academic year. Bowman received a bachelor's degree in Speech Pathology from Augustana College in Rock Island, Illinois. He earned a master's degree from Eastern Illinois University and a Ph.D. in Speech and Hearing Science from the University of Illinois-Urbana/Champaign. Dr. Bowman is a member of the Chicago Education Alliance, the American Speech-Language-Hearing Association, and the American Council on Education's Commission on Women in Higher Education. He serves on the board of directors for Chestnut Health Systems, BroMenn Healthcare, and the McLean County Museum of History. He is also a member of the NCAA's Division I-AA/I-AAA Presidential Advisory Group.

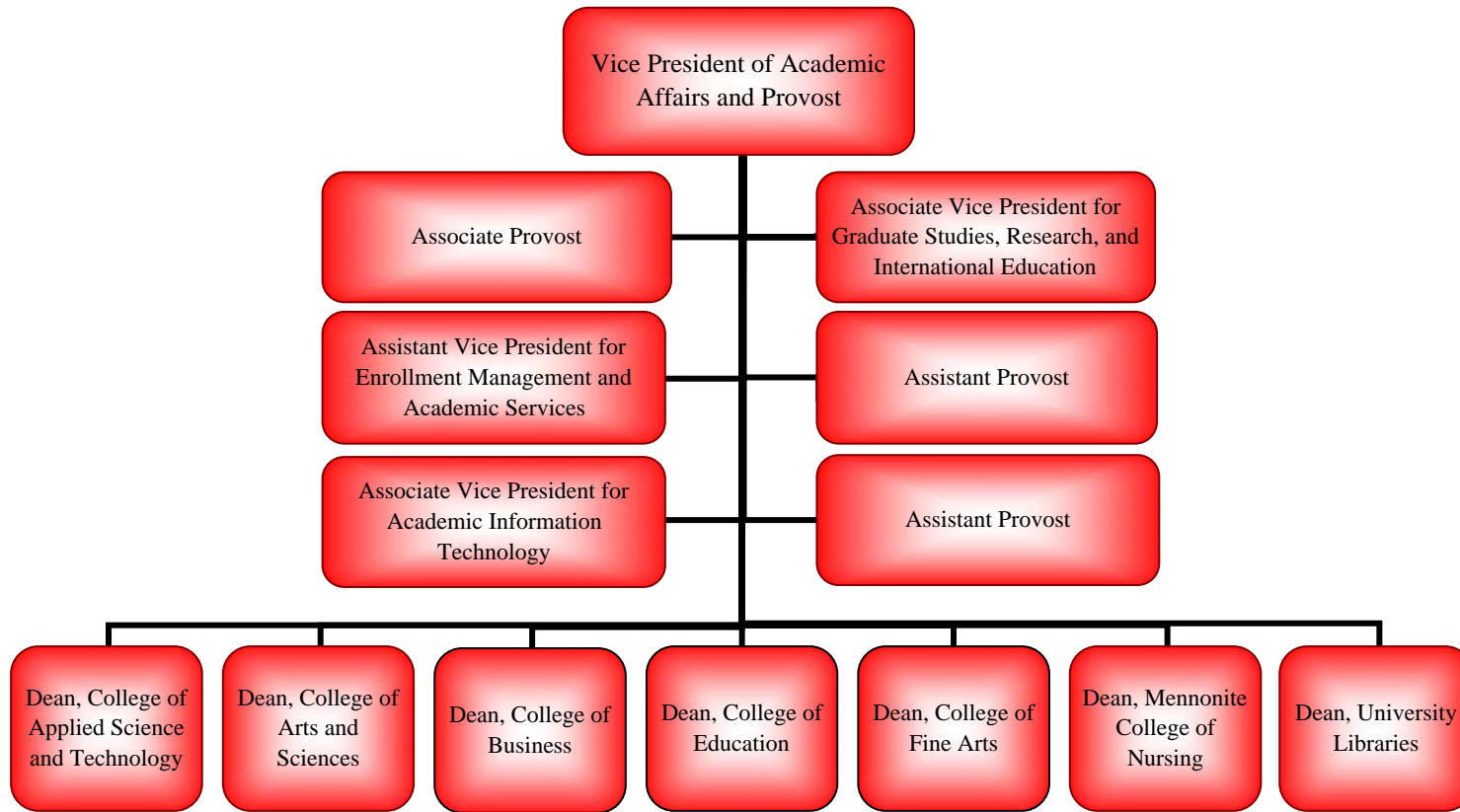




# ORGANIZATIONAL CHARTS

## VP ACADEMIC AFFAIRS & PROVOST ~ JOHN W. PRESLEY

John Woodrow Presley joined Illinois State as Vice President for Academic Affairs and Provost in March 2003. Previously he served as Provost and Vice President of Academic Affairs at the State University of New York-Oswego, Dean of the College of Arts, Science, and Letters at the University of Michigan-Dearborn, and Acting Provost and Dean of the Faculty at Lafayette College. He received his Ph.D. in modern British literature in 1975, his master's degree in English language and literature in 1972 from Southern Illinois University, and his bachelor's degree in English from Arkansas State University in 1970.

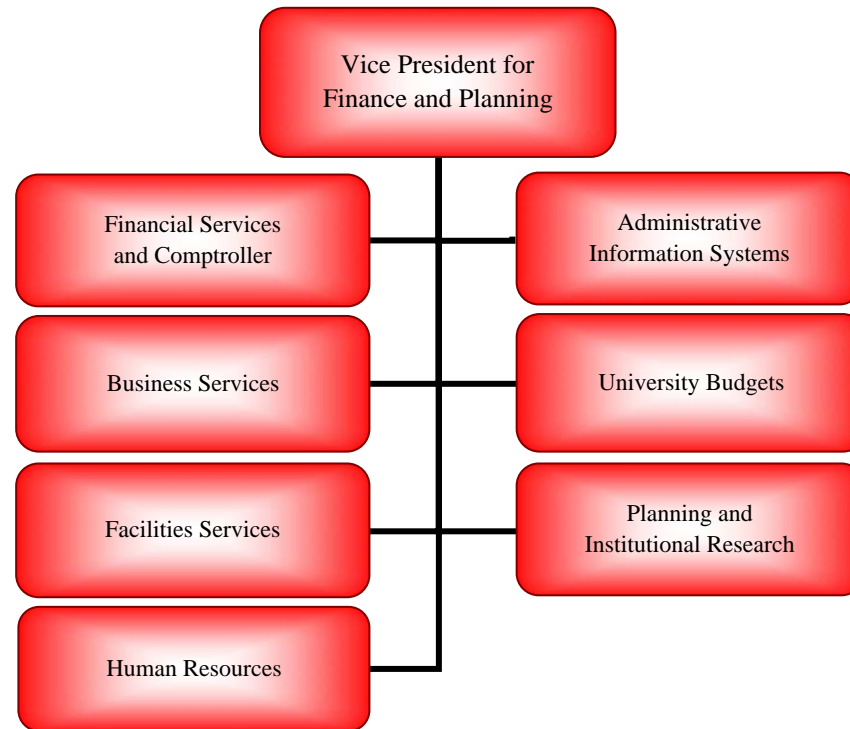




# ORGANIZATIONAL CHARTS

## VP for FINANCE & PLANNING - STEPHEN M. BRAGG

Stephen M. Bragg, Vice President for Finance and Planning, joined Illinois State University in 1994, serving first as Director of Planning, Policy Studies, and Information Systems, and later as Assistant Vice President for Budget and Planning. Prior to joining Illinois State University, Bragg held staff positions in fiscal affairs, academic affairs, and information systems at the Illinois Board of Higher Education (1981 - 1994). He also was Assistant Director of the Center for the Study of Higher Education at The Pennsylvania State University (1980 - 1981). He has a baccalaureate degree from the University of California at Berkeley and master's and doctorate degrees from The Pennsylvania State University.

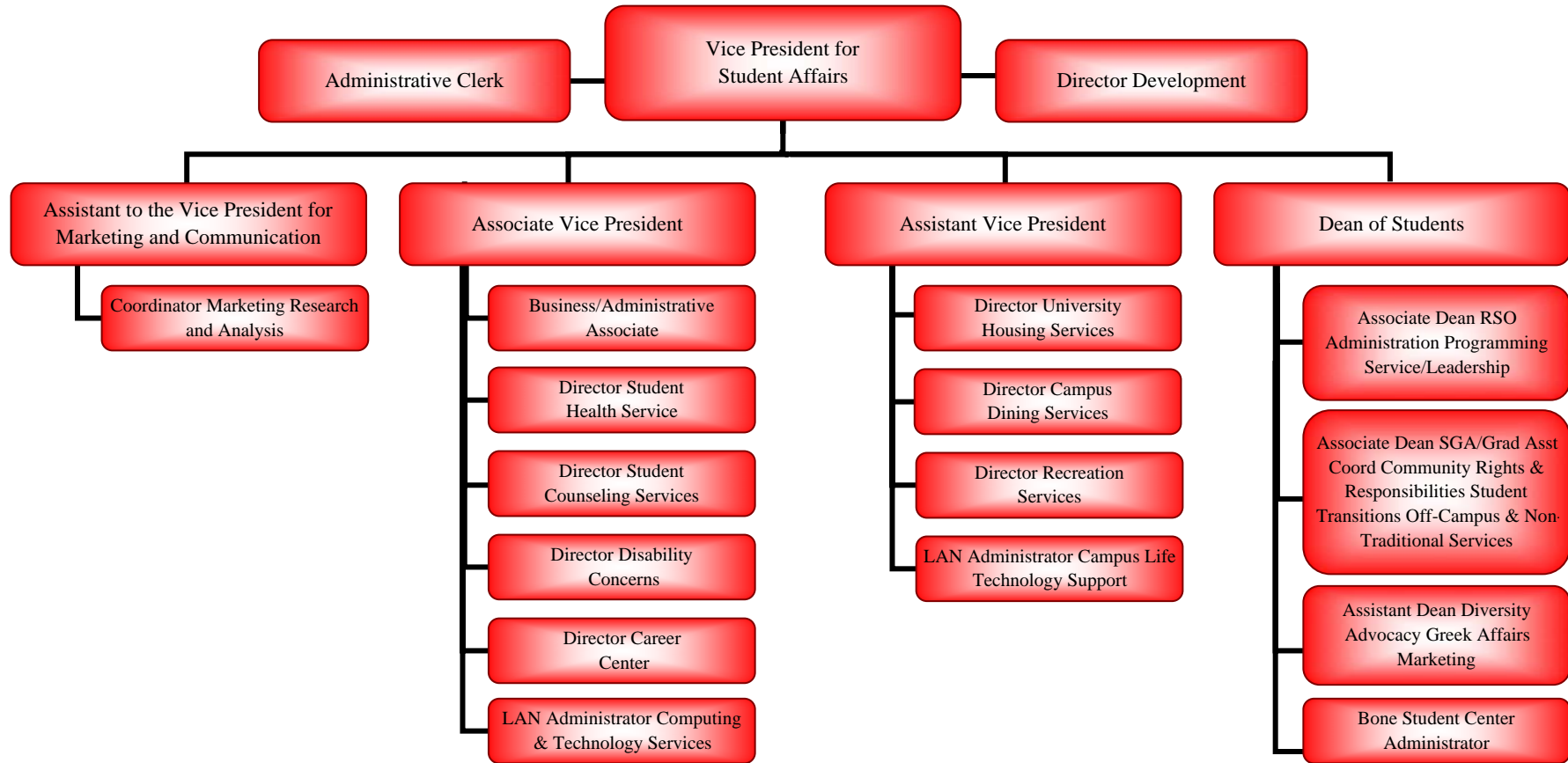




# ORGANIZATIONAL CHARTS

## VP for STUDENT AFFAIRS - STEVEN L. ADAMS

Steve Adams became Vice President for Student Affairs in July, 2006. He has spent his entire 30-year career at Illinois State University, having served in major administrative positions in Academic Affairs prior to his appointment as Student Affairs Vice President. Mr. Adams formerly served as Assistant Vice President for Enrollment Management and Academic Services and as Director of Admissions. He served interim roles as Director of Financial Aid and Director of Enrollment Management. He received the lifetime achievement award from the Illinois Association for College Admission Counseling, the distinguished service award from the Illinois Association for College Admission Counseling, the distinguished service award from the Illinois American College Testing (ACT) Council, and is a member of the Illinois Basketball Hall of Fame and Illinois State University Athletics Hall of Fame as the recipient of the Stretch Miller award. He earned his baccalaureate degree in Business Administration from Illinois Wesleyan University, completed graduate work in Counselor Education at Illinois State University, and was a Fellow in the Education Policy Fellowship Program in Washington, DC.

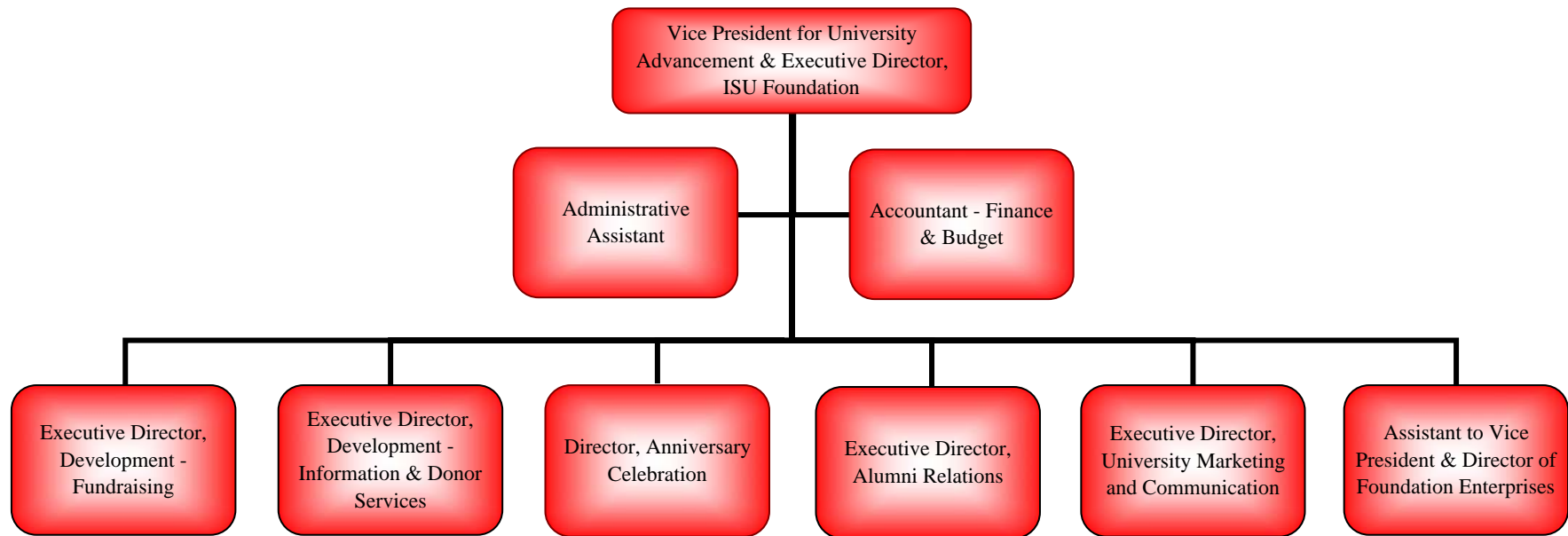




# ORGANIZATIONAL CHARTS

## VP for UNIVERSITY ADVANCEMENT - DIANNE ASHBY

Dianne Ashby became Vice President for University Advancement in July 2005. Most recently, Dr. Ashby served as professor and the Dean of the College of Education at Illinois State University. She has been a school administrator for the Illinois Department of Corrections, staff to the Illinois State Board of Education, principal of University High School (Illinois State University), and chair of the Department of Educational Administration and Foundations at Illinois State. She earned her bachelor's degree in Speech and Theatre Arts from MacMurray College, her master's degree in Educational Administration from the University of Illinois-Springfield, and her doctorate in Educational Administration from Southern Illinois University-Carbondale.







ILLINOIS STATE UNIVERSITY

# STUDENTS



## DID YOU KNOW?

Illinois State University enrollment increased from 4,469 in 1960 to 17,549 in 1970.

The number of enrolled students has remained stable since the 1970's, reaching a peak of 22,241 in 1989.

Students gathering in the "four corners" of Old Main (ca 1943).





# STUDENTS ~ NEW

## APPLICATIONS, ACCEPTANCES, & ENROLLMENTS - FALL 2006

<u>Racial/Ethnic Designation</u>	<u>New Beginning Freshmen</u>			<u>New Beginning Freshmen</u>	
	<u>Applications</u>	<u>Acceptances</u>	<u>Enrollments</u>	<u>Yield Rate</u>	<u>Show Rate</u>
American Indian/Alaskan Native	53	40	14	75	35
Black/Non-Hispanic	1,296	717	212	55	30
Asian/Pacific Islander	371	216	58	58	27
Hispanic	613	446	126	73	28
White/Non-Hispanic	9,299	6,517	2,690	70	41
Not Reported	366	230	92	63	40
Non-Resident Alien	73	52	8	71	15
Total	12,071	8,218	3,200	68	39

<u>Racial/Ethnic Designation</u>	<u>New Undergraduate Transfer Students (excludes Unclassified)</u>			<u>New Undergraduate Transfer Students (excludes Unclassified)</u>	
	<u>Applications</u>	<u>Acceptances</u>	<u>Enrollments</u>	<u>Yield Rate</u>	<u>Show Rate</u>
American Indian/Alaskan Native	15	9	5	60	56
Black/Non-Hispanic	241	120	68	50	57
Asian/Pacific Islander	80	59	26	74	44
Hispanic	150	100	61	67	61
White/Non-Hispanic	3,395	2,585	1,561	76	60
Not Reported	135	98	54	73	55
Non-Resident Alien	47	24	13	51	54
Total	4,063	2,995	1,788	74	60

<u>Racial/Ethnic Designation</u>	<u>New Graduate Students</u>			<u>New Graduate Students</u>	
	<u>Applications</u>	<u>Acceptances</u>	<u>Enrollments</u>	<u>Yield Rate</u>	<u>Show Rate</u>
American Indian/Alaskan Native	4	4	2	100	50
Black/Non-Hispanic	71	48	30	68	63
Asian/Pacific Islander	52	30	16	58	53
Hispanic	35	18	12	51	67
White/Non-Hispanic	1,128	714	438	63	61
Not Reported	56	28	18	50	64
Non-Resident Alien	453	195	86	43	44
Total	1,799	1,037	602	58	58



# STUDENTS ~ NEW

# NEW BEGINNING FRESHMEN ~ FALL 2006

<u>ACT Composite</u>	<u>Number</u>	<u>Percent</u>	<u>Cumulative</u>
30-36	123	3.8	3.8
26-29	730	22.8	26.7
23-25	1,292	40.4	67.0
20-22	872	27.3	94.3
18-19	110	3.4	97.7
16-17	44	1.4	99.1
1-15	6	0.2	99.3
Not Reported	23	0.7	100.0

<u>Top Illinois Counties</u>	<u>Number</u>
Cook	973
DuPage	428
Will	287
Lake	225
McLean	151
McHenry	125
Kane	117
Champaign	73
Winnebago	60
Sangamon	59
Peoria	47
Tazewell	46

<u>High School Percentile</u>	<u>Number</u>	<u>Percent</u>
Top 10%	358	11.2
Top Quartile (includes top 10%)	1,185	37.0
Second Quartile	1,316	41.1

## High School Percentile Rank

<u>Fall Term</u>	<u>ACT Interquartile</u>	<u>ACT Score</u>	<u>99-75</u>	<u>74-50</u>	<u>49-25</u>	<u>24-1</u>	<u>Not Reported</u>	<u>Total</u>
2006	22-26	30-36	81	27	4	--	11	123
2005	22-26	26-29	320	264	82	6	58	730
2004	22-26	23-25	465	541	185	4	97	1,292
2003	21-26	20-22	254	408	129	11	70	872
2002	21-25	18-19	36	55	14	1	4	110
		16-17	19	16	6	1	2	44
		1-15	4	1	1	--	--	6
		Not Reported	6	4	2	--	11	23
		Total	1,185	1,316	423	23	253	3,200

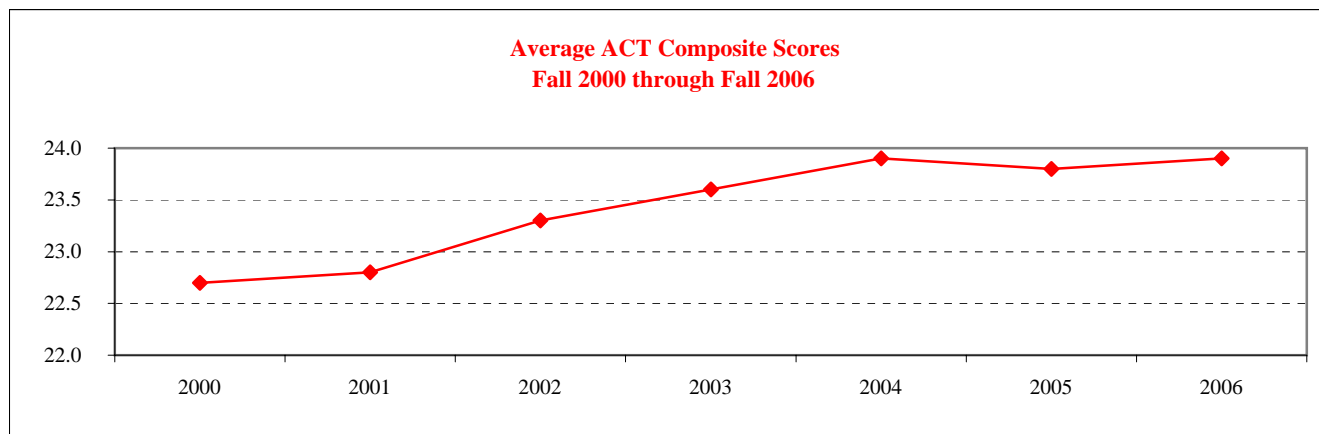
*Educating Illinois* ACT Interquartile (mid 50%) goal is 22-27.



# STUDENTS ~ NEW AMERICAN COLLEGE TESTING (ACT) SCORES ~ FALL 2000 through FALL 2006

<u>Subscores and Composite</u>	<u>2000-2001</u>	<u>2001-2002</u>	<u>2002-2003</u>	<u>2003-2004</u>	<u>2004-2005</u>	<u>2005-2006</u>	<u>2006-2007</u>
English	22.3	22.4	23.1	23.4	23.7	23.8	24.1
Math	22.5	22.5	23.0	23.1	23.5	23.4	23.5
Reading	22.9	23.2	23.9	23.9	24.5	24.1	24.4
Science	22.4	22.7	22.8	23.2	23.1	23.2	23.1
Composite	22.7	22.8	23.3	23.6	23.9	23.8	23.9

<u>Composite Scores By College</u>	<u>2000-2001</u>	<u>2001-2002</u>	<u>2002-2003</u>	<u>2003-2004</u>	<u>2004-2005</u>	<u>2005-2006</u>	<u>2006-2007</u>
Applied Science & Technology	22.7	22.9	23.3	23.6	23.5	23.5	23.6
Arts & Sciences	23.6	23.9	24.3	24.6	24.9	24.8	24.9
Business	22.6	22.6	23.3	23.7	23.7	23.9	24.0
Education	22.3	22.4	23.0	23.8	23.8	24.1	24.0
Fine Arts	23.0	23.9	24.2	24.3	24.9	24.5	25.2
Mennonite College of Nursing	21.5	22.0	22.4	22.7	24.0	24.2	26.2
Other Majors	22.1	22.0	22.4	22.1	22.5	22.2	22.6
Total	22.7	22.8	23.3	23.6	23.9	23.8	23.9





# STUDENTS ~ NEW

# NEW BEGINNING FRESHMEN ~ FALL 2000 through FALL 2006

Average ACT for all students<sup>1</sup>

	Illinois		
	State	Illinois	National
	University	Illinois	National
Fall 2002	23.3	20.1	20.8
Fall 2003	23.6	20.2	20.8
Fall 2004	23.9	20.3	20.9
Fall 2005	23.8	20.3	20.9
Fall 2006	23.9	20.5	21.1

Percent Graduating from High School Class

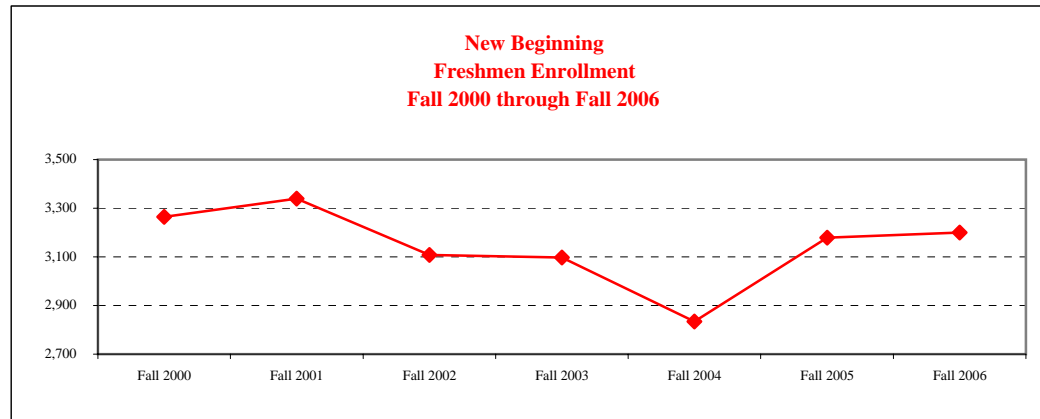
	Top 10%	Top <sup>2</sup> Quartile	Second Quartile
Fall 2002	10.6	37.8	44.1
Fall 2003	11.0	40.1	42.2
Fall 2004	10.8	38.0	43.1
Fall 2005	11.0	36.3	42.8
Fall 2006	11.3	37.0	41.1

<sup>1</sup> For core curriculum students only (4 years English; 3 years each Math, Social Sciences, & Natural Science) ACT composite score in fall '06 is 22.4 for Illinois & 21.9 nationally.

<sup>2</sup> Top Quartile includes the top 10%.

Enrollment

<u>Racial/Ethnic Designation</u>	<u>Fall 2000</u>	<u>Fall 2001</u>	<u>Fall 2002</u>	<u>Fall 2003</u>	<u>Fall 2004</u>	<u>Fall 2005</u>	<u>Fall 2006</u>
American Indian/Alaskan Native	10	6	5	11	13	5	14
Black/Non-Hispanic	210	217	175	248	219	232	212
Asian/Pacific Islander	63	52	40	52	55	62	58
Hispanic	66	96	97	126	97	131	126
White/Non-Hispanic	2,899	2,951	2,770	2,645	2,297	2,548	2,690
Not Reported	--	--	--	--	134	192	92
Non-Resident Alien	17	18	21	15	19	9	8
Total	3,265	3,340	3,108	3,097	2,834	3,179	3,200



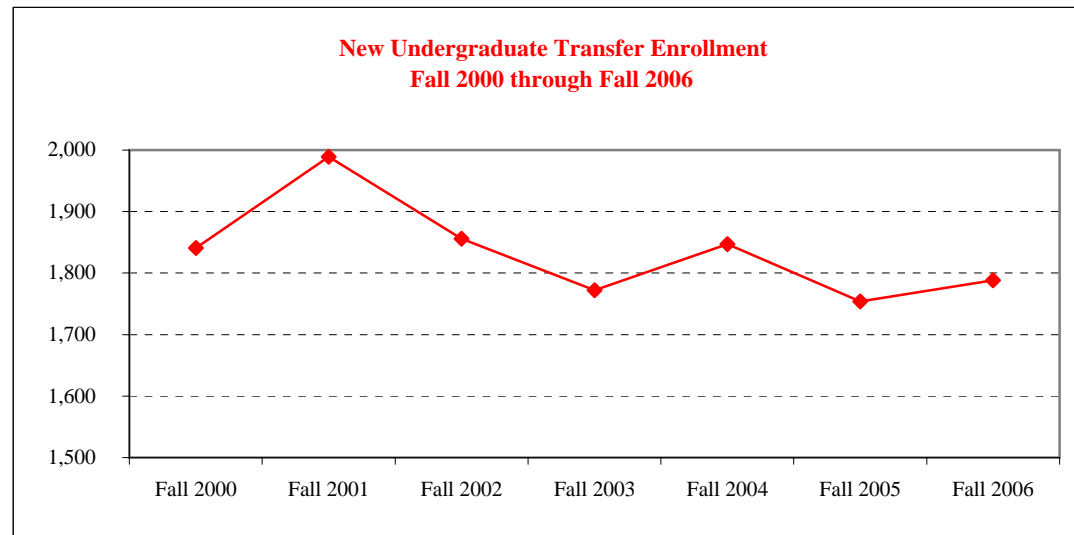


# STUDENTS ~ NEW

## NEW UNDERGRADUATE TRANSFERS ~ FALL 2000 through FALL 2006

<u>Racial/Ethnic Designation</u>	<u>Fall 2000</u>	<u>Fall 2001</u>	<u>Fall 2002</u>	<u>Fall 2003</u>	<u>Fall 2004</u>	<u>Fall 2005</u>	<u>Fall 2006</u>
American Indian/Alaskan Native	2	4	2	4	4	3	5
Black/Non-Hispanic	81	80	71	65	99	79	68
Asian/Pacific Islander	30	15	15	18	35	27	26
Hispanic	33	54	46	50	52	45	61
White/Non-Hispanic	1,681	1,816	1,699	1,616	1,508	1,467	1,561
Not Reported	--	--	--	--	131	110	54
Non-Resident Alien	14	20	23	19	18	23	13
<b>Total</b>	<b>1,841</b>	<b>1,989</b>	<b>1,856</b>	<b>1,772</b>	<b>1,847</b>	<b>1,754</b>	<b>1,788</b>

<u>Transfer Institution Type</u>	<u>Fall 2000</u>	<u>Fall 2001</u>	<u>Fall 2002</u>	<u>Fall 2003</u>	<u>Fall 2004</u>	<u>Fall 2005</u>	<u>Fall 2006</u>
Community Colleges	1,534	1,614	1,536	1,379	1,414	1,377	1,403
4-Year Colleges	286	367	314	366	427	366	385

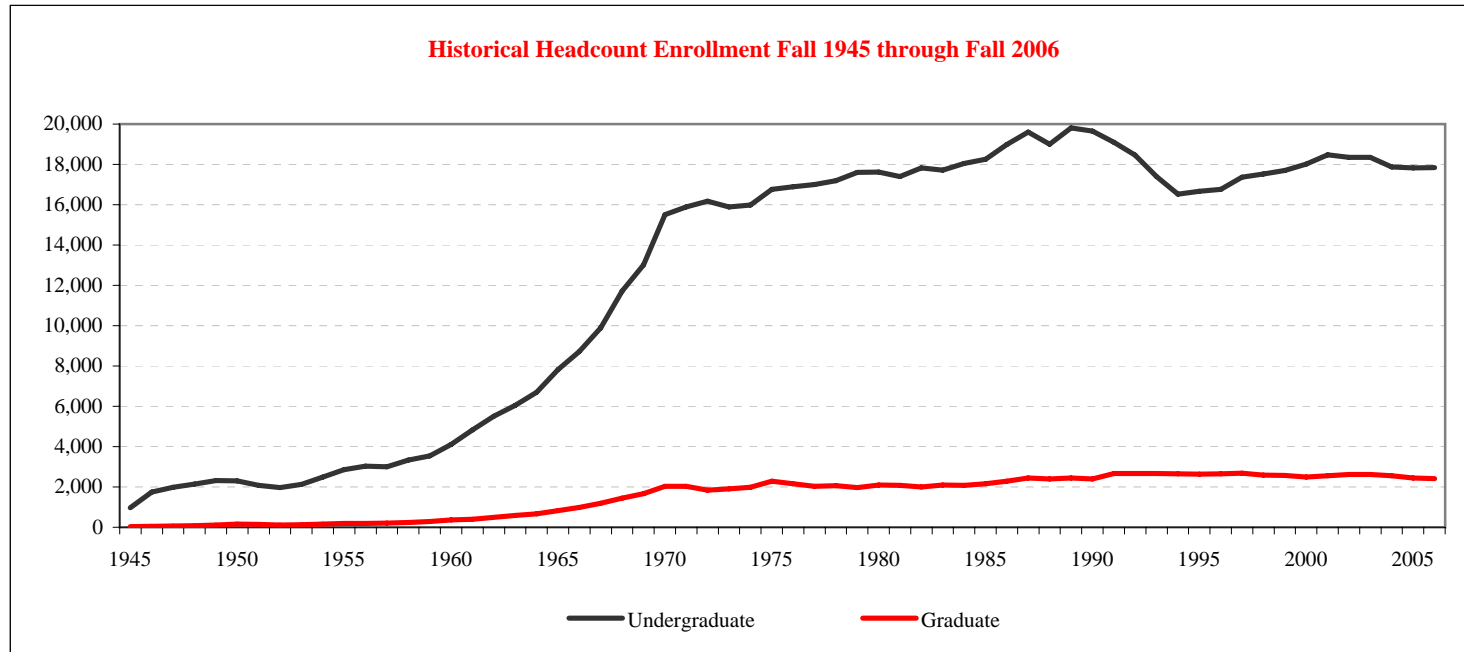




# STUDENT ~ ENROLLMENT

## GENDER, LEVEL, & HOURS ~ FALL 2000 through FALL 2006

	Fall 2000		Fall 2001		Fall 2002		Fall 2003		Fall 2004		Fall 2005		Fall 2006	
	Male	Female	Male	Female	Male	Female	Male	Female	Male	Female	Male	Female	Male	Female
<b>Undergraduate</b>														
12 or more hours	6,854	9,705	6,995	10,037	7,060	9,918	7,080	9,731	7,062	9,552	7,021	9,614	7,166	9,528
Less than 12 hours	702	757	697	743	655	719	606	680	589	663	560	632	524	624
Sub Total	7,556	10,462	7,692	10,780	7,715	10,637	7,686	10,411	7,651	10,215	7,581	10,246	7,690	10,152
<b>Graduate</b>														
9 or more hours	395	617	408	619	404	690	425	718	454	691	464	672	443	678
Less than 9 hours	505	969	530	1,006	553	976	497	968	482	926	432	870	418	880
Sub Total	900	1,586	938	1,625	957	1,666	922	1,686	936	1,617	896	1,542	861	1,558
<b>Total</b>	8,456	12,048	8,630	12,405	8,672	12,303	8,608	12,097	8,587	11,832	8,477	11,788	8,551	11,710





# STUDENT ~ ENROLLMENT COLLEGE, RACIAL/ETHNIC DESIGNATION & LEVEL ~ FALL 2006

	<u>American Indian/ Alaskan Native</u>	<u>Black/Non- Hispanic</u>	<u>Asian/Pacific Islander</u>	<u>Hispanic</u>	<u>White/Non- Hispanic</u>	<u>Non-Resident Aliens</u>	<u>Not Reported</u>	<u>Total</u>
<u>Undergraduate</u>								
Applied Science and Technology	9	178	29	88	2,778	20	94	3,196
Arts and Sciences	13	268	102	174	4,328	52	189	5,126
Business	5	141	70	82	2,641	23	113	3,075
Education	9	60	34	60	2,105	3	77	2,348
Fine Arts	5	47	22	40	859	7	55	1,035
Mennonite College of Nursing	1	7	9	6	319	2	12	356
Other	12	358	50	147	2,005	30	104	2,706
Total	54	1,059	316	597	15,035	137	644	17,842

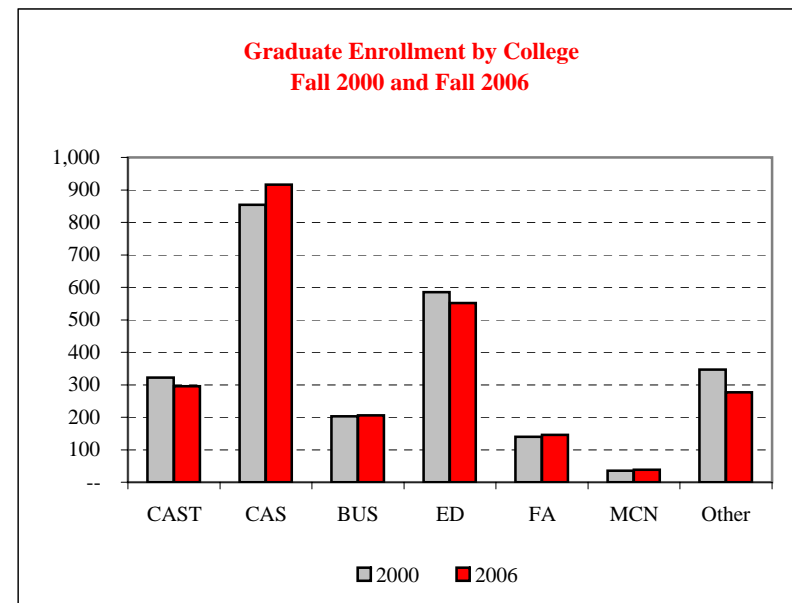
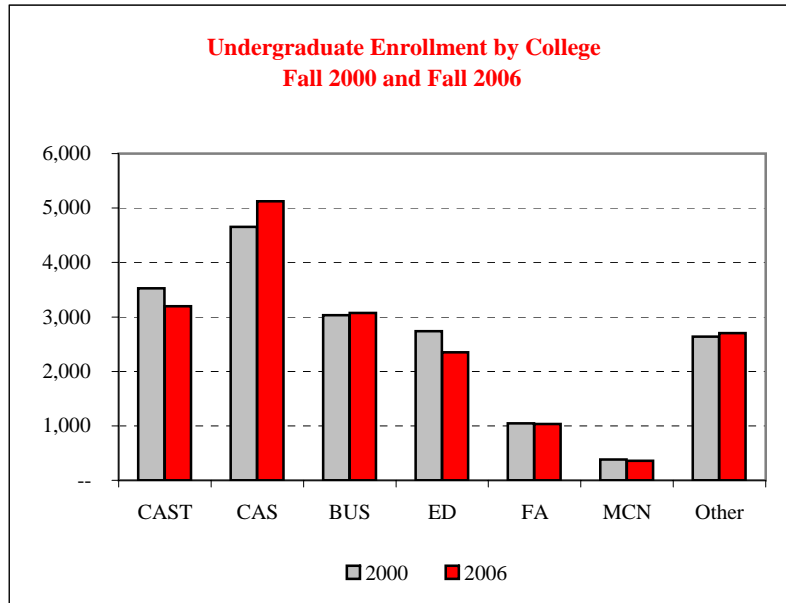
	<u>American Indian/ Alaskan Native</u>	<u>Black/Non- Hispanic</u>	<u>Asian/Pacific Islander</u>	<u>Hispanic</u>	<u>White/Non- Hispanic</u>	<u>Non-Resident Aliens</u>	<u>Not Reported</u>	<u>Total</u>
<u>Graduate</u>								
Applied Science and Technology	1	11	8	7	192	62	6	287
Arts and Sciences	4	36	10	25	661	153	27	916
Business	--	2	9	2	152	37	4	206
Education	1	30	7	6	483	15	7	549
Fine Arts	--	4	4	4	93	25	16	146
Mennonite College of Nursing	--	1	2	--	33	1	1	38
Other	--	16	12	5	229	9	6	277
Total	6	100	52	49	1,843	302	67	2,419



# STUDENT ~ ENROLLMENT

## COLLEGE & LEVEL ~ FALL 2000 and Fall 2006

	Fall 2000			Fall 2006			Percent Change		
	Undergraduate	Graduate	Total	Undergraduate	Graduate	Total	Undergraduate	Graduate	Total
Applied Science and Technology	3,526	322	3,848	3,196	287	3,483	(9.4)	(10.9)	(9.5)
Arts and Sciences	4,653	854	5,507	5,126	916	6,042	10.2	7.3	9.7
Business	3,034	203	3,237	3,075	206	3,281	1.4	1.5	1.4
Education	2,739	585	3,324	2,348	549	2,897	(14.3)	(6.2)	(12.8)
Fine Arts	1,045	140	1,185	1,035	146	1,181	(1.0)	4.3	(0.3)
Menonite College of Nursing	380	35	415	356	38	394	(6.3)	8.6	(5.1)
Other	2,641	347	2,988	2,706	277	2,983	2.5	(20.2)	(0.2)
Total	18,018	2,486	20,504	17,842	2,419	20,261	(1.0)	(2.7)	(1.2)



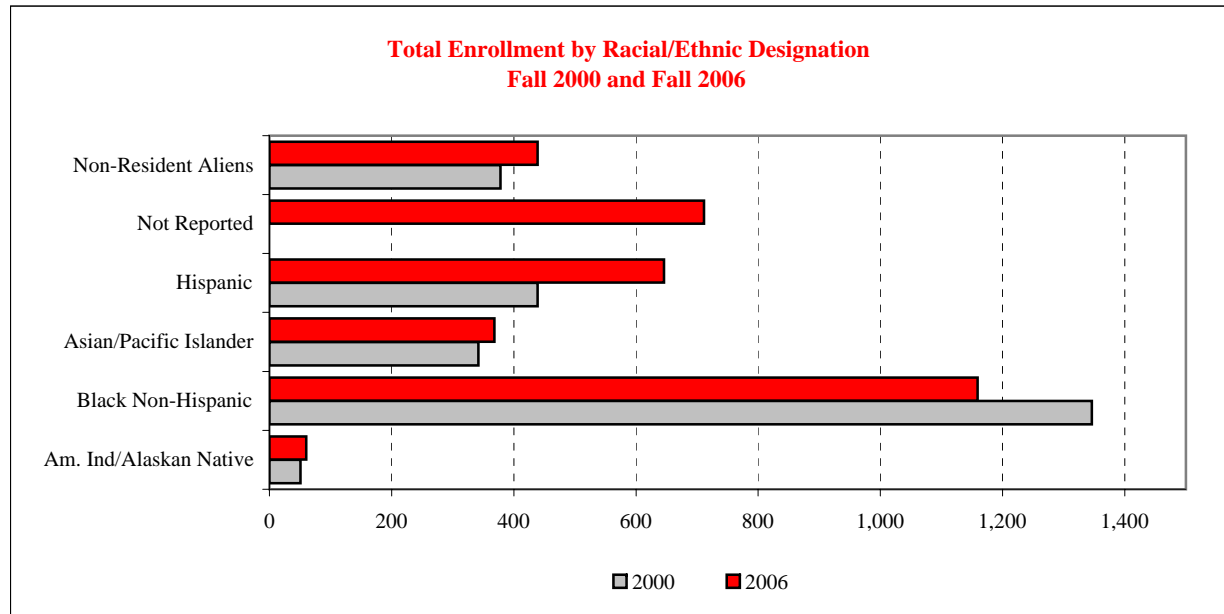




# STUDENT ~ ENROLLMENT

## RACIAL/ETHNIC & LEVEL ~ FALL 2000 and FALL 2006

Racial/Ethnic Designation	Fall 2000			Fall 2006			Percent Change		
	Undergraduate	Graduate	Total	Undergraduate	Graduate	Total	Undergraduate	Graduate	Total
American Indian/Alaskan Native	46	5	51	54	6	60	17.4	20.0	17.6
Black/Non-Hispanic	1,207	139	1,346	1,059	100	1,159	(12.3)	(28.1)	(13.9)
Asian/Pacific Islander	285	57	342	316	52	368	10.9	(8.8)	7.6
Hispanic	399	40	439	597	49	646	49.6	22.5	47.2
White/Non-Hispanic	15,945	2,003	17,948	15,035	1,843	16,878	(5.7)	(8.0)	(6.0)
Not Reported	--	--	--	644	67	711			
Non-Resident Aliens	136	242	378	137	302	439	0.7	24.8	16.1
<b>Total</b>	<b>18,018</b>	<b>2,486</b>	<b>20,504</b>	<b>17,842</b>	<b>2,419</b>	<b>20,261</b>	<b>(1.0)</b>	<b>(2.7)</b>	<b>(1.2)</b>

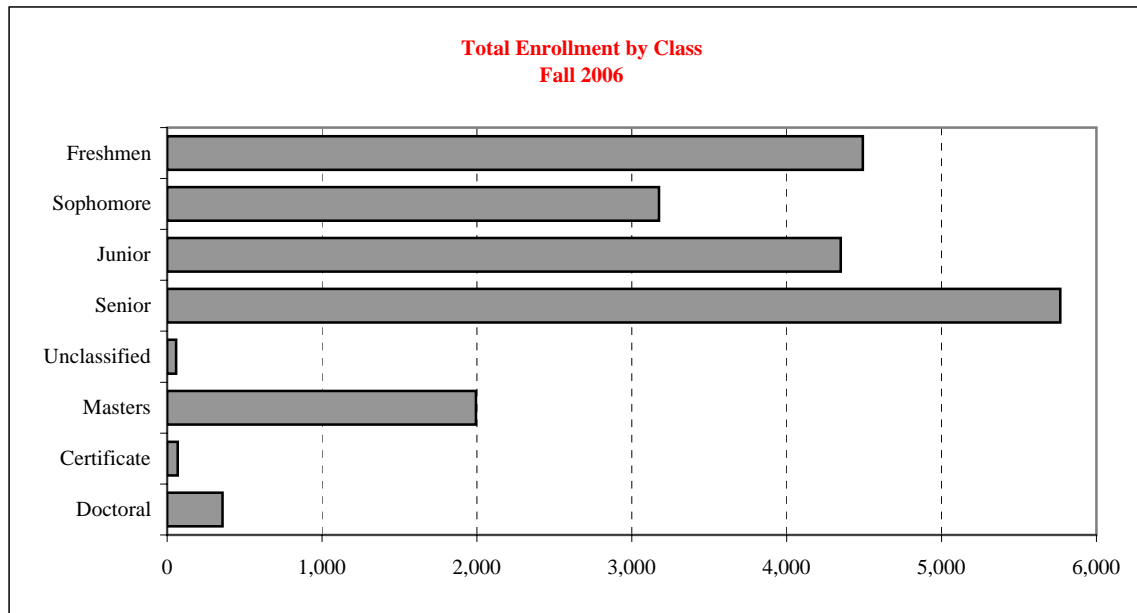




# STUDENT ~ ENROLLMENT

CLASS AND AGE ~ FALL 2006

Age as of September 1, 2006	Undergraduate						Graduate				Grand Total
	Freshmen	Sophomore	Junior	Senior	Unclassified	Total	Masters	Certificate	Doctoral	Total	
Under 18	63	1	--	--	13	77	--	--	--	--	77
18 or 19	4,248	1,731	78	2	4	6,063	--	--	--	--	6,063
20 or 21	127	1,290	3,354	2,193	12	6,976	18	2	2	22	6,998
22 - 24	35	85	560	2,627	8	3,315	671	17	21	709	4,024
25 - 29	12	45	204	554	5	820	595	10	64	669	1,489
30 - 39	7	22	103	234	9	375	403	22	152	577	952
40 - 49	--	2	45	121	3	171	208	13	62	283	454
50 - 59	--	--	5	34	4	43	90	4	53	147	190
60 or over	--	--	1	1	--	2	9	--	3	12	14
<b>Total</b>	<b>4,492</b>	<b>3,176</b>	<b>4,350</b>	<b>5,766</b>	<b>58</b>	<b>17,842</b>	<b>1,994</b>	<b>68</b>	<b>357</b>	<b>2,419</b>	<b>20,261</b>

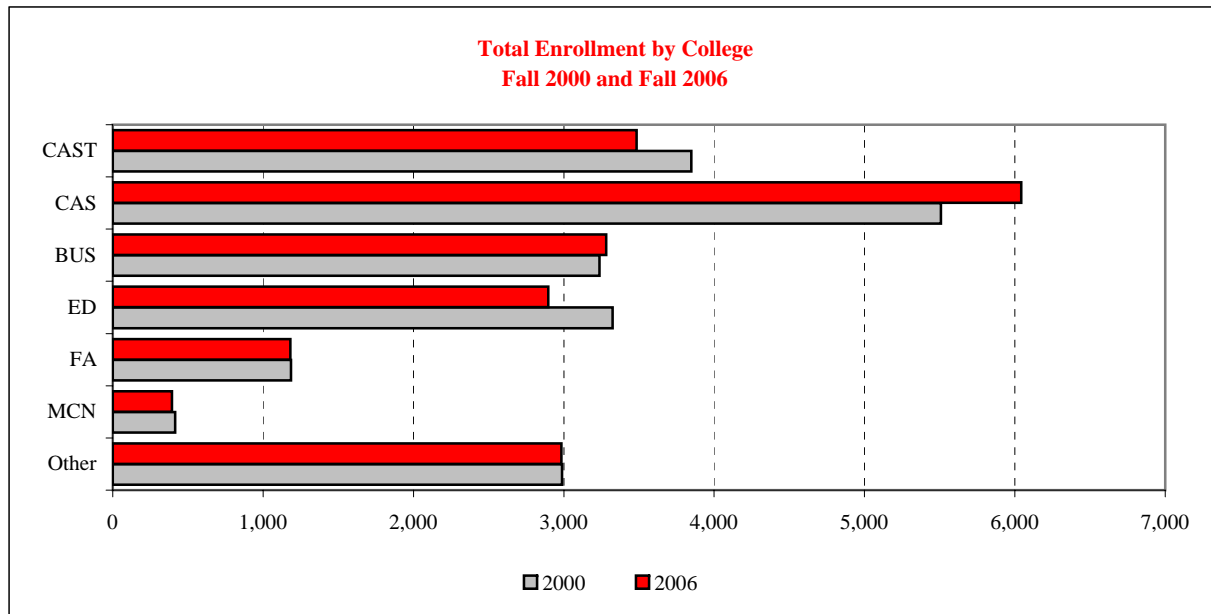




# STUDENT ~ ENROLLMENT

## COLLEGE AND GENDER ~ FALL 2000 and FALL 2006

College	Fall 2000			Fall 2006			Percent Change		
	Male	Female	Total	Male	Female	Total	Male	Female	Total
Applied Science and Technology	2,273	1,575	3,848	2,000	1,483	3,483	(12.0)	(5.8)	(9.5)
Arts and Sciences	2,162	3,345	5,507	2,497	3,545	6,042	15.5	6.0	9.7
Business	1,762	1,475	3,237	1,957	1,324	3,281	11.1	(10.2)	1.4
Education	382	2,942	3,324	332	2,565	2,897	(13.1)	(12.8)	(12.8)
Fine Arts	502	683	1,185	487	694	1,181	(3.0)	1.6	(.3)
Mennonite College of Nursing	15	400	415	30	364	394	100.0	(9.0)	(5.1)
Other	1,360	1,628	2,988	1,248	1,735	2,983	(8.2)	6.6	(.2)
<b>Total</b>	<b>8,456</b>	<b>12,048</b>	<b>20,504</b>	<b>8,551</b>	<b>11,710</b>	<b>20,261</b>	<b>1.1</b>	<b>(2.8)</b>	<b>(1.2)</b>

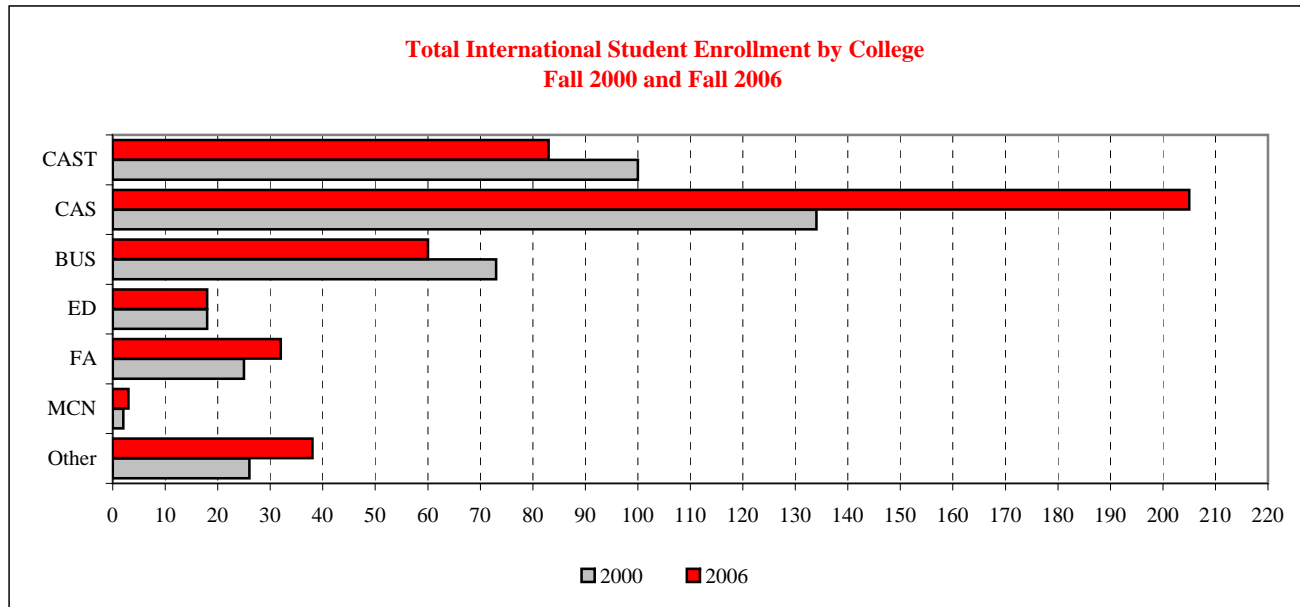




# STUDENT ~ ENROLLMENT

## INTERNATIONAL STUDENTS ~ FALL 2000 and FALL 2006

	Fall 2000			Fall 2006			Percent Change		
	Undergraduate	Graduate	Total	Undergraduate	Graduate	Total	Undergraduate	Graduate	Total
Applied Science and Technology	28	72	100	20	63	83	(8.0)	(9.0)	(17.0)
Arts and Sciences	40	94	134	52	153	205	12.0	59.0	71.0
Business	38	35	73	23	37	60	(15.0)	2.0	(13.0)
Education	--	18	18	3	15	18	3.0	(3.0)	--
Fine Arts	6	19	25	7	25	32	1.0	6.0	7.0
Mennonite College of Nursing	2	--	2	2	1	3	--	1.0	1.0
Other	22	4	26	30	8	38	8.0	4.0	12.0
<b>Total</b>	<b>136</b>	<b>242</b>	<b>378</b>	<b>137</b>	<b>302</b>	<b>439</b>	<b>1.0</b>	<b>60.0</b>	<b>61.0</b>

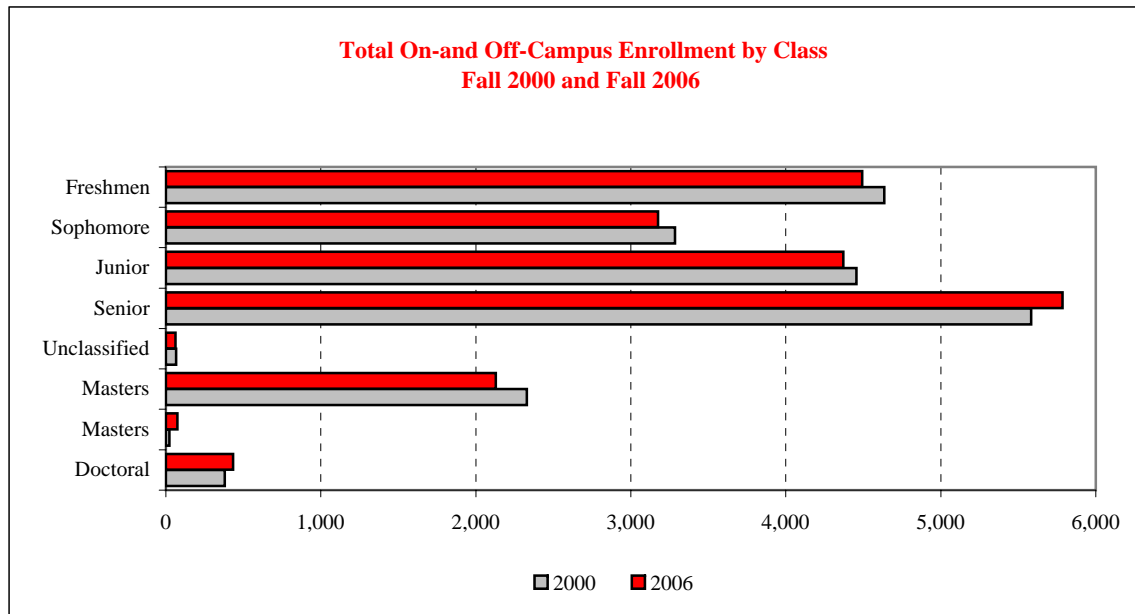




# STUDENT ~ ENROLLMENT

## ON- AND OFF-CAMPUS & CLASS ~ FALL 2000 and FALL 2006

	Fall 2000				Fall 2006				Percent Change			
	On-Campus	Off-Campus	Total	FTE	On-Campus	Off-Campus	Total	FTE	On-Campus	Off-Campus	Total	FTE
Freshmen	4,636	--	4,636	4,379	4,492	--	4,492	4,340	(3.1)	--	(3.1)	(.9)
Sophomore	3,285	--	3,285	3,087	3,176	--	3,176	3,078	(3.3)	--	(3.3)	(.3)
Junior	4,456	--	4,456	4,020	4,350	20	4,370	4,065	(2.4)	--	(1.9)	1.1
Senior	5,582	--	5,582	4,780	5,766	20	5,786	5,057	3.3	--	3.7	5.8
Unclassified	59	7	66	31	58	3	61	27	(1.7)	(57.1)	(7.6)	(12.9)
Masters	2,166	162	2,328	1,636	1,994	135	2,129	1,597	(7.9)	(16.7)	(8.5)	(2.4)
Certificate	22	--	22	23	68	6	74	47	209.1	--	236.4	104.3
Doctoral	298	82	380	219	357	76	433	258	19.8	(7.3)	13.9	17.8
<b>Total</b>	<b>20,504</b>	<b>251</b>	<b>20,755</b>	<b>18,175</b>	<b>20,261</b>	<b>260</b>	<b>20,521</b>	<b>18,469</b>	<b>(1.2)</b>	<b>3.6</b>	<b>(1.1)</b>	<b>1.6</b>

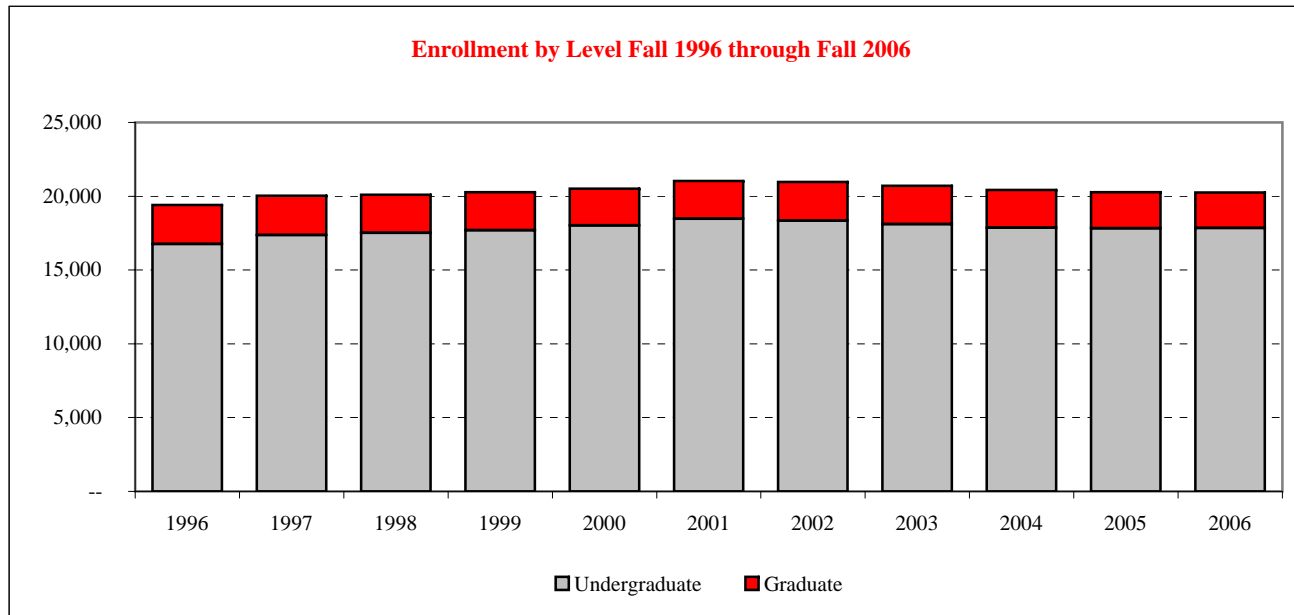
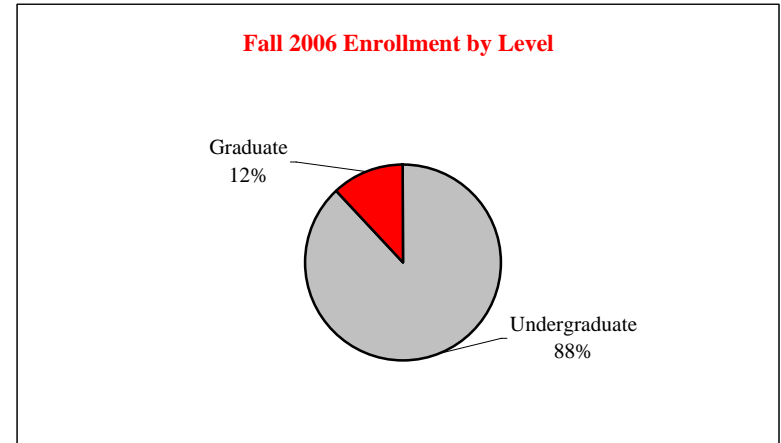




# STUDENT ~ ENROLLMENT

LEVEL ~ FALL 1996 through FALL 2006

<u>Fall</u>	<u>Undergraduate</u>	<u>Graduate</u>	<u>Total</u>
1996	16,763	2,646	19,409
1997	17,366	2,679	20,045
1998	17,518	2,587	20,105
1999	17,703	2,578	20,281
2000	18,018	2,486	20,504
2001	18,472	2,563	21,035
2002	18,352	2,623	20,975
2003	18,097	2,608	20,705
2004	17,866	2,553	20,419
2005	17,827	2,438	20,265
2006	17,842	2,419	20,261





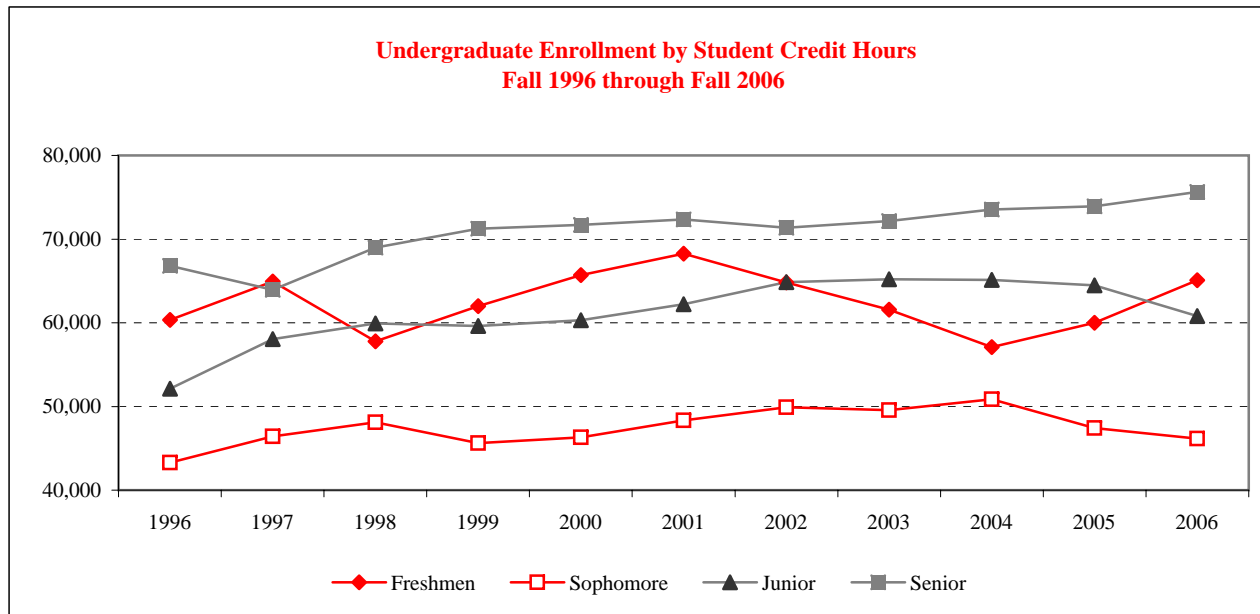
# STUDENT ~ ENROLLMENT CLASS, GENDER & RACIAL/ETHNIC DESIGNATION ~ FALL 2006

	<u>American Indian/ Alaskan Native</u>	<u>Black/Non- Hispanic</u>	<u>Asian/Pacific Islander</u>	<u>Hispanic</u>	<u>White/Non- Hispanic</u>	<u>Non-Resident Aliens</u>	<u>Unknown</u>	<u>Total</u>
<u>Freshmen</u>								
Male	5	117	42	76	1,583	7	86	1,916
Female	12	222	40	106	2,105	7	84	2,576
<u>Sophomore</u>								
Male	5	53	20	49	1,099	7	63	1,296
Female	4	123	37	72	1,540	12	92	1,880
<u>Junior</u>								
Male	1	92	35	65	1,598	16	84	1,891
Female	12	170	42	62	2,064	29	80	2,459
<u>Senior</u>								
Male	9	99	36	81	2,236	21	81	2,563
Female	6	179	63	84	2,776	25	70	3,203
<u>Unclassified</u>								
Male	--	--	--	--	15	5	4	24
Female	--	4	1	2	19	8	--	34
<u>Undergraduate Total</u>								
Male	20	361	133	271	6,531	56	318	7,690
Female	34	698	183	326	8,504	81	326	10,152
<u>Master</u>								
Male	2	28	20	17	503	118	30	718
Female	2	47	27	25	1,030	113	32	1,276
<u>Certificate</u>								
Male	--	1	1	1	18	--	--	21
Female	--	1	2	--	41	2	1	47
<u>Doctoral</u>								
Male	2	8	--	2	84	25	1	122
Female	--	15	2	4	167	44	3	235
<u>Graduate Total</u>								
Male	4	37	21	20	605	143	31	861
Female	2	63	31	29	1,238	159	36	1,558



# STUDENT ~ ENROLLMENT CLASS LEVEL & CREDIT HOURS ~ FALL 1996 through FALL 2006

	<u>1996</u>	<u>1997</u>	<u>1998</u>	<u>1999</u>	<u>2000</u>	<u>2001</u>	<u>2002</u>	<u>2003</u>	<u>2004</u>	<u>2005</u>	<u>2006</u>
Freshmen	60,338	64,935	57,785	61,993	65,692	68,273	64,805	61,570	57,099	59,989	65,095
Sophomore	43,294	46,429	48,114	45,620	46,299	48,350	49,924	49,558	50,848	47,433	46,166
Junior	52,105	58,056	59,913	59,629	60,300	62,208	64,854	65,193	65,120	64,488	60,795
Senior	66,805	63,934	69,000	71,253	71,699	72,344	71,345	72,157	73,533	73,902	75,641
Unclassified	1,058	958	852	664	444	515	553	426	458	391	381
Masters	14,969	14,818	14,588	14,410	14,211	13,979	14,450	14,760	14,500	14,119	13,933
Certificate	253	226	179	202	208	208	204	208	289	248	393
Doctoral	1,596	1,643	1,658	1,552	1,594	1,942	2,068	2,073	2,122	2,091	2,053
Total Credit Hours	240,418	250,999	252,088	255,321	260,447	267,819	268,202	265,945	263,968	262,660	264,456



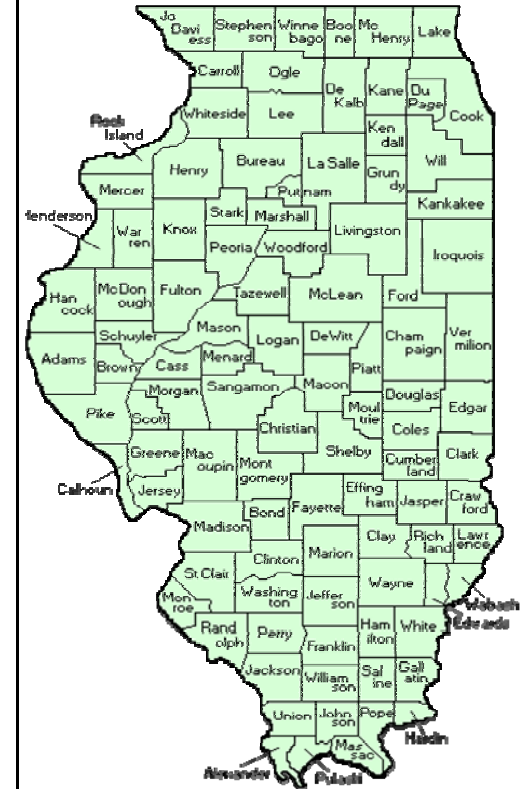




# STUDENT ~ ENROLLMENT

## Illinois Residents by County ~ Fall 2006

County	Undergrads	Graduates	County	Undergrads	Graduates	County	Undergrads	Graduates	
Adams	82	8	Hardin	--	--	Morgan	56	9	
Alexander	1	--	Henderson	4	--	Moutrie	11	4	
Bond	8	--	Henry	108	10	Ogle	59	7	
Boone	53	2	Iroquois	107	9	<b>Peoria</b>	<b>442</b>	<b>148</b>	
Brown	2	1	Jackson	13	2	Perry	3	--	
Bureau	93	17	Jasper	4	1	Piatt	60	10	
Calhoun	4	--	Jefferson	6	2	Pike	6	4	
Carroll	23	2	Jersey	9	1	Pope	--	--	
Cass	9	2	Jo Davies	14	2	Pulaski	--	--	
<b>Champaign</b>	<b>463</b>	<b>51</b>	Johnson	--	--	Putnam	22	2	
Christian	39	9	<b>Kane</b>	<b>764</b>	<b>19</b>	Randolph	5	--	
Clark	1	1	Kankakee	199	17	Richland	2	1	
Clay	1	2	Kendall	103	3	Rock Island	161	18	
Clinton	21	2	Knox	64	11	Saline	1	--	
Coles	43	3	<b>Lake</b>	<b>1,045</b>	<b>35</b>	Sangamon	333	84	
<b>Cook</b>	<b>4,577</b>	<b>153</b>	Lasalle	353	61	Schuyler	2	2	
Crawford	6	--	Lawrence	1	--	Scott	2	1	
Cumberland	1	2	Lee	25	10	Shelby	18	2	
Dekalb	98	4	Livingston	202	37	St. Clair	130	9	
DwEitt	76	16	Logan	89	69	Stark	20	5	
Douglas	27	3	Macon	187	26	Stephenson	73	9	
<b>DuPage</b>	<b>1,945</b>	<b>56</b>	Macoupin	48	5	<b>Tazewell</b>	<b>420</b>	<b>114</b>	
Edgar	11	1	Madison	140	12	Union	1	1	
Edwards	--	--	Marion	5	1	Vermilion	145	11	
Effingham	32	4	Marshall	33	12	Wabash	4	--	
Fayette	5	1	Mason	43	8	Warren	17	3	
Ford	76	4	Massac	1	--	Washington	5	--	
Franklin	6	--	McDonough	26	6	Wayne	1	1	
Fulton	55	22	McHenry	550	17	White	2	--	
Gallatin	--	--	<b>McLean</b>	<b>1,259</b>	<b>488</b>	Whiteside	101	10	
Greene	2	1	Menard	22	8	<b>Will</b>	<b>1,020</b>	<b>46</b>	
Grundy	170	15	Mercer	35	4	Williamson	11	1	
Hamilton	1	--	Monroe	31	3	<b>Winnebago</b>	<b>355</b>	<b>25</b>	
Hancock	21	1	Montgomery	40	4	Woodford	241	56	
							<b>Illinois Total</b>	<b>17,211</b>	<b>1,849</b>





# STUDENT ~ ENROLLMENT

## STATE RESIDENCE ~ FALL 2006

<u>State</u>	<u>Undergraduates</u>	<u>Graduates</u>	<u>State</u>	<u>Undergraduates</u>	<u>Graduates</u>	<u>State</u>	<u>Undergraduates</u>	<u>Graduates</u>
Alabama	5	2	Maine	3	1	Pennsylvania	10	5
Alaska	2	--	Maryland	8	1	Rhode Island	--	2
Arizona	9	6	Massachusetts	3	--	South Carolina	3	2
Arkansas	3	2	<b>Michigan</b>	<b>29</b>	<b>21</b>	South Dakota	--	1
<b>California</b>	<b>35</b>	<b>12</b>	Minnesota	13	16	Tennessee	8	5
Colorado	5	3	Mississippi	2	--	Texas	23	11
Connecticut	1	2	<b>Missouri</b>	<b>34</b>	<b>13</b>	Utah	2	3
Delaware	1	--	Montana	1	--	Vermont	8	6
Dist. of Columbia	--	1	Nebraska	6	3	Virginia	--	1
<b>Florida</b>	<b>28</b>	<b>4</b>	Nevada	3	1	Washington	8	5
Georgia	12	11	New Hampshire	2	2	West Virginia	1	--
Hawaii	3	--	New Jersey	3	4	<b>Wisconsin</b>	<b>33</b>	<b>23</b>
Idaho	3	--	New Mexico	3	--	Wyoming	--	2
<b>Illinois</b>	<b>17,211</b>	<b>1,849</b>	New York	8	13	Territories	2	2
<b>Indiana</b>	<b>41</b>	<b>12</b>	North Carolina	5	2	<b>U.S. Foreign</b>	<b>40</b>	<b>19</b>
<b>Iowa</b>	<b>35</b>	<b>23</b>	North Dakota	2	1	Unknown	1	1
Kansas	11	5	<b>Ohio</b>	<b>17</b>	<b>9</b>			
Kentucky	6	5	Oklahoma	5	2			
Louisiana	5	2	Oregon	3	1	U.S. Total	17,705	2,117



# STUDENT ~ ENROLLMENT

## INTERNATIONAL STUDENTS ~ FALL 2006

	<u>Undergraduates</u>	<u>Graduates</u>		<u>Undergraduates</u>	<u>Graduates</u>		<u>Undergraduates</u>	<u>Graduates</u>
<b>AFRICA</b>			<b>EUROPE</b>			<b>South America</b>		
Angola	1	--	Austria	1	1	Brazil	1	3
Cameroon	1	4	Belgium	--	1	Chile	1	--
Chad	--	1	Bulgaria	2	2	Colombia	1	3
Egypt	1	1	Denmark	--	1	Ecuador	--	1
Ethiopia	--	2	Estonia	2	--	Venezuela	--	2
Ghana	--	11	France	2	1	<b>MIDDLE EAST</b>		
Ivory Coast	2	--	Germany Fed Rep	3	4	Cyprus	--	3
Kenya	3	9	Italy	--	1	Iran	--	2
Mozambique	--	2	Netherlands	1	1	Lebanon	--	3
Nigeria	6	1	Norway	--	2	Palestinian Territory	--	1
South Africa	2	--	Poland	--	2	Saudi Arabia	2	1
Zimbabwe	2	2	Portugal	1	--	Turkey	--	1
<b>ASIA</b>			Romania	--	1	Yemen (Sanaa)	--	1
Armenia	--	1	Serbia	2	--	<b>NORTH AMERICA</b>		
China	2	27	Sweden	3	1	Bermuda	1	--
Hong Kong	1	--	Switzerland	--	1	Canada	15	3
India	7	106	<b>LATIN AMERICA</b>			United States	17,705	2,117
Indonesia	1	--	<b>Caribbean</b>			<b>OCEANIA</b>		
Japan	13	5	Barbados	4	--	Australia	--	1
Korea, South	39	25	Jamaica	--	2	<b>Central America</b>		
Malaysia	--	4	Trinidad and Tobago	--	1	Belize	--	1
Maldives	1	--	<b>Central America</b>			Mexico	2	1
Nepal	1	2	<b>Central America</b>			Panama	1	1
Pakistan	4	3	<b>Central America</b>			<b>Unknown</b>		
Russia	2	6	<b>Central America</b>				1	--
Philippines	--	4	<b>Central America</b>			<b>Total International</b>		
Sri Lanka	1	1	<b>Central America</b>				137	302
Taiwan	--	7	<b>Central America</b>			<b>Total Enrollment</b>		
Thailand	1	23	<b>Central America</b>				17,842	2,419
Upper Volta	--	1	<b>Central America</b>					
Uzbekistan	--	4	<b>Central America</b>					



# DEGREES CONFERRED

COLLEGE ~ FISCAL YEAR 2000 through FISCAL YEAR 2006

<u>College</u>	<u>Undergraduate</u>						
	<u>FY 2000</u>	<u>FY 2001</u>	<u>FY 2002</u>	<u>FY 2003</u>	<u>FY 2004</u>	<u>FY 2005</u>	<u>FY 2006</u>
Applied Science and Technology	975	971	960	1,001	947	974	993
Arts and Sciences	1,395	1,321	1,309	1,280	1,359	1,437	1,378
Business	700	727	756	782	832	878	748
Education	702	702	788	812	680	625	692
Fine Arts	183	222	234	207	186	204	203
Mennonite College of Nursing	60	50	96	84	86	116	104
Other	55	48	36	36	58	40	40
Total	4,070	4,041	4,179	4,202	4,148	4,274	4,158

<u>College</u>	<u>Graduate</u>						
	<u>FY 2000</u>	<u>FY 2001</u>	<u>FY 2002</u>	<u>FY 2003</u>	<u>FY 2004</u>	<u>FY 2005</u>	<u>FY 2006</u>
Applied Science and Technology	137	98	116	117	130	142	136
Arts and Sciences	251	249	276	262	269	297	288
Business	62	85	69	93	98	102	103
Education	202	214	180	225	173	183	225
Fine Arts	41	47	48	64	52	47	51
Mennonite College of Nursing	19	14	14	12	6	9	14
Total	712	707	703	773	728	780	817

<u>College</u>	<u>Total</u>						
	<u>FY 2000</u>	<u>FY 2001</u>	<u>FY 2002</u>	<u>FY 2003</u>	<u>FY 2004</u>	<u>FY 2005</u>	<u>FY 2006</u>
Applied Science and Technology	1,112	1,069	1,076	1,118	1,077	1,116	1,129
Arts and Sciences	1,646	1,570	1,585	1,542	1,628	1,734	1,666
Business	762	812	825	875	930	980	851
Education	904	916	968	1,037	853	808	917
Fine Arts	224	269	282	271	238	251	254
Mennonite College of Nursing	79	64	110	96	92	125	118
Other	55	48	36	36	58	40	40
Total	4,782	4,748	4,882	4,975	4,876	5,054	4,975



# DEGREES CONFERRED

## UNDERGRADUATE, GENDER & RACIAL/ETHNIC DESIGNATION

<u>Racial/Ethnic Designation</u>	<u>Male</u>						
	<u>FY 2000</u>	<u>FY 2001</u>	<u>FY 2002</u>	<u>FY 2003</u>	<u>FY 2004</u>	<u>FY 2005</u>	<u>FY 2006</u>
American Indian/Alaskan Native	7	6	2	4	6	2	2
Black/Non-Hispanic	92	87	76	84	77	76	63
Asian/Pacific Islander	32	27	25	20	30	31	29
Hispanic	39	34	34	43	39	37	50
White/Non-Hispanic	1,476	1,512	1,537	1,545	1,519	1,618	1,520
Not Reported	1	--	1	1	2	4	23
Non-Resident Alien	11	11	19	13	14	19	21
Total	1,658	1,677	1,694	1,710	1,687	1,787	1,708

<u>Racial/Ethnic Designation</u>	<u>Female</u>						
	<u>FY 2000</u>	<u>FY 2001</u>	<u>FY 2002</u>	<u>FY 2003</u>	<u>FY 2004</u>	<u>FY 2005</u>	<u>FY 2006</u>
American Indian/Alaskan Native	12	5	5	5	9	8	5
Black/Non-Hispanic	154	163	167	166	127	122	135
Asian/Pacific Islander	28	26	30	35	33	29	33
Hispanic	40	50	46	60	52	61	72
White/Non-Hispanic	2,172	2,106	2,219	2,212	2,220	2,246	2,160
Not Reported	--	--	--	1	1	2	25
Non-Resident Alien	6	14	18	13	19	19	20
Total	2,412	2,364	2,485	2,492	2,461	2,487	2,450

<u>Racial/Ethnic Designation</u>	<u>Total</u>						
	<u>FY 2000</u>	<u>FY 2001</u>	<u>FY 2002</u>	<u>FY 2003</u>	<u>FY 2004</u>	<u>FY 2005</u>	<u>FY 2006</u>
American Indian/Alaskan Native	19	11	7	9	15	10	7
Black/Non-Hispanic	246	250	243	250	204	198	198
Asian/Pacific Islander	60	53	55	55	63	60	62
Hispanic	79	84	80	103	91	98	122
White/Non-Hispanic	3,648	3,618	3,756	3,757	3,739	3,864	3,680
Not Reported	1	--	1	2	3	6	48
Non-Resident Alien	17	25	37	26	33	38	41
Total	4,070	4,041	4,179	4,202	4,148	4,274	4,158



# DEGREES CONFERRED

## GRADUATE, LEVEL & RACIAL/ETHNIC DESIGNATION

<u>Racial/Ethnic Designation</u>	<u>Master</u>						
	<u>FY 2000</u>	<u>FY 2001</u>	<u>FY 2002</u>	<u>FY 2003</u>	<u>FY 2004</u>	<u>FY 2005</u>	<u>FY 2006</u>
American Indian/Alaskan Native	--	1	2	--	1	1	--
Black/Non-Hispanic	31	29	29	31	21	29	36
Asian/Pacific Islander	12	11	12	9	9	14	12
Hispanic	5	12	17	6	5	7	12
White/Non-Hispanic	538	543	506	585	536	568	588
Not Reported	--	--	--	--	--	--	9
Non-Resident Alien	71	74	78	79	106	96	98
Total	657	670	644	710	678	715	755

<u>Racial/Ethnic Designation</u>	<u>IBHE Approved Certificate</u>						
	<u>FY 2000</u>	<u>FY 2001</u>	<u>FY 2002</u>	<u>FY 2003</u>	<u>FY 2004</u>	<u>FY 2005</u>	<u>FY 2006</u>
American Indian/Alaskan Native	--	--	--	--	--	--	--
Black/Non-Hispanic	1	--	--	1	1	--	--
Asian/Pacific Islander	1	1	--	2	--	1	1
Hispanic	--	--	--	--	--	2	1
White/Non-Hispanic	10	4	7	16	6	13	8
Not Reported	--	--	--	--	--	--	--
Non-Resident Alien	--	--	--	1	--	--	--
Total	12	5	7	20	7	16	10

<u>Racial/Ethnic Designation</u>	<u>Doctoral</u>						
	<u>FY 2000</u>	<u>FY 2001</u>	<u>FY 2002</u>	<u>FY 2003</u>	<u>FY 2004</u>	<u>FY 2005</u>	<u>FY 2006</u>
American Indian/Alaskan Native	--	--	--	--	--	--	--
Black/Non-Hispanic	2	3	--	4	6	7	4
Asian/Pacific Islander	--	1	--	--	--	1	--
Hispanic	1	--	2	1	1	1	1
White/Non-Hispanic	35	24	38	29	29	33	39
Not Reported	--	--	--	--	--	--	--
Non-Resident Alien	5	4	12	21	7	7	8
Total	43	32	52	55	43	49	52

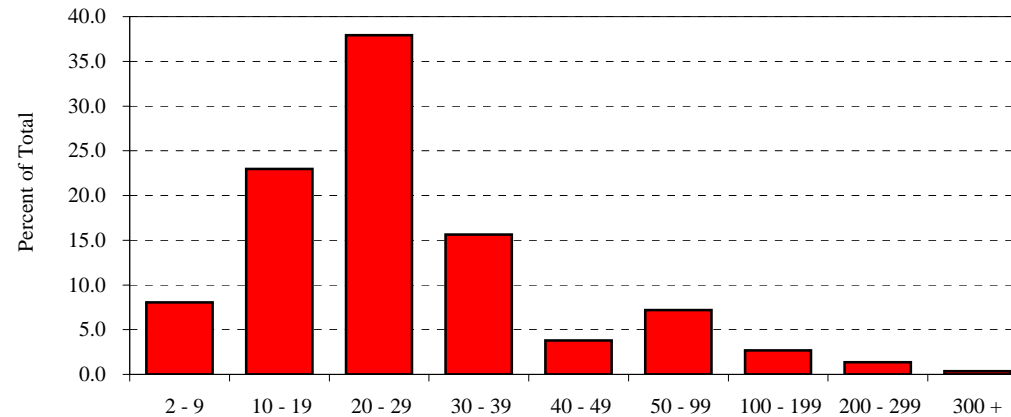


# STUDENT ~ OTHER

## CLASS SIZE ~ FALL 2003 through FALL 2006

Class Size <sup>1</sup>	Fall 2003			Fall 2004			Fall 2005			Fall 2006		
	Number	Percent	Cumulative Percent	Number	Percent	Cumulative Percent	Number	Percent	Cumulative Percent	Number	Percent	Cumulative Percent
2 - 9	194	8.0	8.0	195	8.1	8.1	204	8.6	8.6	193	8.1	8.1
10 - 19	486	19.9	27.9	502	20.8	28.8	553	23.3	31.9	551	23.0	31.0
20 - 29	940	38.6	66.4	900	37.2	66.0	853	35.9	67.8	909	37.9	69.0
30 - 39	414	17.0	83.4	453	18.7	84.7	401	16.9	84.7	375	15.6	84.6
40 - 49	151	6.2	89.6	126	5.2	90.0	85	3.6	88.3	91	3.8	88.4
50 - 99	151	6.2	95.8	132	5.5	95.4	161	6.8	95.0	172	7.2	95.6
100 - 199	55	2.3	98.1	67	2.8	98.2	73	3.1	98.1	64	2.7	98.2
200 - 299	39	1.6	99.7	39	1.6	99.8	34	1.4	99.5	33	1.4	99.6
300 +	8	0.3	100.0	5	0.2	100.0	11	0.5	100.0	9	0.4	100.0
Total	2,438	100.0	100.0	2,419	100.0	100.0	2,375	100.0	100.0	2,397	100.0	100.0

Class Size Distribution  
Fall 2006



<sup>1</sup> Breakdowns are based on *U.S. News and World Report* definition.



# STUDENT ~ OTHER

## TIME-TO-DEGREE ~ FALL 1995 through FALL 2002

Number of Degree Recipients as of August 2006

	<u>1995</u>	<u>1996</u>	<u>1997</u>	<u>1998</u>	<u>1999</u>	<u>2000</u>	<u>2001</u>	<u>2002</u>
Graduated from Fall Cohort	1,712	1,720	1,976	1,739	1,971	2,091	2,038	1,281

Time-to-Degree for those who Graduated from Fall Cohort

<u>Years</u>	<u>1995</u>	<u>1996</u>	<u>1997</u>	<u>1998</u>	<u>1999</u>	<u>2000</u>	<u>2001</u>	<u>2002</u>
Three or Fewer	0.9%	0.5%	0.3%	0.5%	0.4%	0.2%	0.6%	0.7%
Four	49.1%	50.4%	51.0%	54.1%	56.1%	57.4%	64.0%	99.3%
Five	38.5%	37.9%	40.0%	37.5%	36.1%	36.6%	35.4%	--
Six	7.6%	7.3%	6.3%	5.9%	5.9%	5.8%	--	--
Seven	2.1%	2.3%	1.6%	1.7%	1.5%	--	--	--
Eight	0.9%	1.0%	0.8%	0.4%	--	--	--	--
Nine	0.5%	0.6%	0.1%	--	--	--	--	--
Ten	0.5%	--	--	--	--	--	--	--
	100.0%	100.0%	100.0%	100.0%	100.0%	100.0%	100.0%	100.0%

*Educating Illinois 2003-2010* contains a goal for the University to decrease the average time to degree for new beginning freshmen maintaining continuous enrollment from four years and one semester to four years. For native undergraduate students (Fall cohort 2000) who graduated from Illinois State University, 57.6 percent finished their degree in four years or less. An additional 36.6 percent graduated in the fifth year, and 5.8 percent graduated in the sixth year (boxes).





# STUDENT ~ OTHER

## RETENTION AND GRADUATION RATES

Fall to Fall Retention Rates	Percent of New Beginning Freshmen that Return for Second Fall Term					
	2000	2001	2002	2003	2004	2005
All Students	79.5%	79.7%	82.6%	83.6%	85.0%	84.0%
Male Students	77.1	77.1	82.7	83.2	84.4	82.9
Female Students	81.0	81.2	82.5	83.9	85.3	84.7
Black/Non-Hispanic Students	70.0	66.8	71.4	71.8	73.5	65.9
Hispanic Students	77.3	77.1	75.3	68.3	80.4	79.4

*Educating Illinois 2003-2010* calls for the University to increase freshmen retention rates from 83 percent to 88 percent. The University is making progress toward this with 84 percent of the fall 2005 new beginning freshmen cohort returning in fall 2006.

Six Year Graduation Rates	New Beginning Freshmen Cohort Year					
	1995	1996	1997	1998	1999	2000
All Students	55.6%	57.2%	59.1%	62.2%	63.2%	64.0%
Male Students	49.9	53.4	53.2	57.5	57.6	59.6
Female Students	59.3	59.5	62.8	64.5	66.4	66.8
Black/Non-Hispanic Students	34.9	36.6	45.4	38.9	42.5	52.9
Hispanic Students	44.6	39.2	40.4	40.0	38.5	50.0

*Educating Illinois 2003-2010* calls for the University to increase graduation rates from 60 percent to 67 percent. The University is making progress toward this with 64 percent of the fall 2000 new beginning freshmen cohort graduating by summer 2006.





ILLINOIS STATE UNIVERSITY

# FACULTY/STAFF



## DID YOU KNOW?

The University has had 17 presidents in its 150 years of existence.

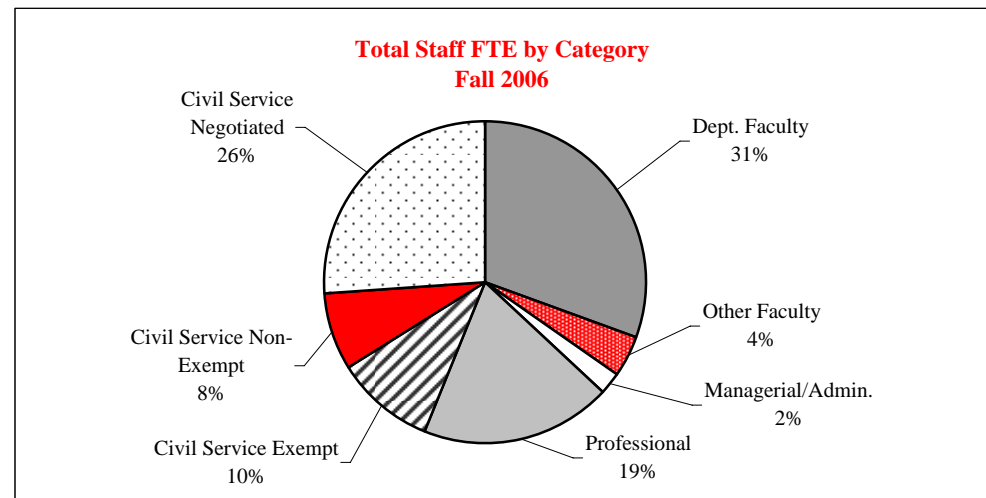
Many have University buildings named after them including Cook and Felmley, the elementary school is named after Thomas Metcalf.

Seated in the center Thomas Metcalf and President John W. Cook, Standing on the left is David Felmley.  
Cook's Tenure as President 1890-1899



# FACULTY/STAFF EMPLOYEE CATEGORY FULL-TIME EQUIVALENCY ~ FALL 2005 and FALL 2006

Employee Category	Fall 2005			Fall 2006		
	Full-Time Number	Part-Time FTE	Total FTE	Full-Time Number	Part-Time FTE	Total FTE
Departmental Faculty <sup>1</sup>	829	100.2	929.2	856	95.7	951.7
Non-Departmental Faculty	4	0.9	4.9	7	2.7	9.7
Library Faculty	29	0.5	29.5	26	0.7	26.7
Lab School Faculty	94	4.6	98.6	94	2.9	96.9
Managerial/Administrative	65	2.1	67.1	66	1.7	67.7
Professional	537	24.8	561.8	569	29.4	598.4
Civil Service						
Exempt	302	1.8	303.8	310	2.6	312.6
Non-Exempt	237	19.0	256.0	226	19.4	245.4
Negotiated	792	6.9	798.9	805	7.2	812.2
Civil Service Total	1,331	27.7	1,358.7	1,341	29.2	1,370.2
University Total	2,889	160.8	3,049.8	2,959	162.4	3,121.4



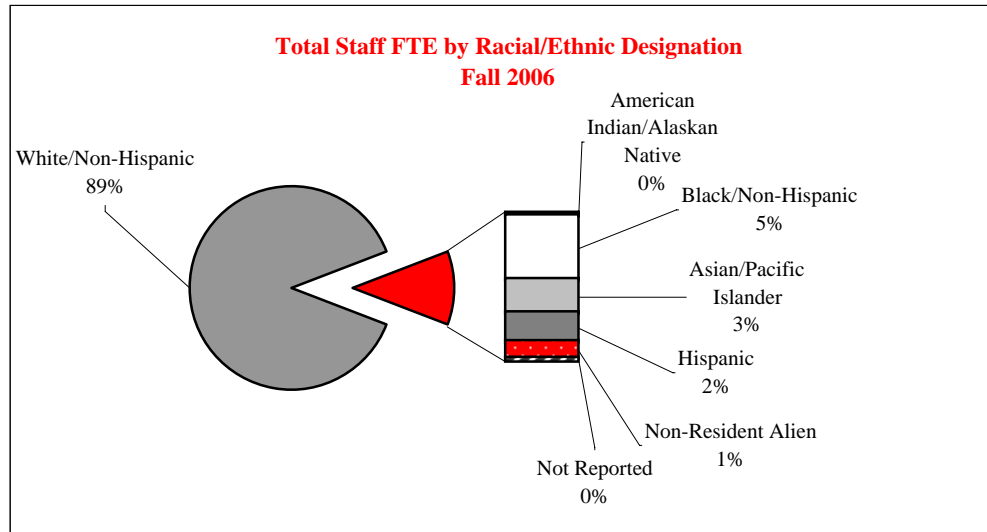
<sup>1</sup> Includes Department Chairs and part-time faculty whose major appointment is Administrative/Professional or Civil Service



# FACULTY/STAFF

## TYPE, GENDER AND RACIAL/ETHNIC DESIGNATION ~ FALL 2006

	Faculty				Administrative/ Professional	Civil Service	Total
	Departmental <sup>1</sup>	Non-Dept.	Library	Lab School			
<b>Gender</b>							
Male	585	8	9	31	303	621	1,557
Female	528	14	19	68	394	761	1,784
<b>Racial/Ethnic Designation</b>							
American Indian/Alaskan Native	3	--	--	--	1	9	13
Black/Non-Hispanic	31	1	--	3	39	91	165
Asian/Pacific Islander	62	--	--	1	10	14	87
Hispanic	21	1	--	1	16	35	74
White/Non-Hispanic	973	18	28	94	607	1,232	2,952
Non-Resident Alien	20	1	--	--	21	1	43
Not Reported	3	1	--	--	3	--	7
<b>Total</b>	<b>1,113</b>	<b>22</b>	<b>28</b>	<b>99</b>	<b>697</b>	<b>1,382</b>	<b>3,341</b>



<sup>1</sup> Includes Department Chairs and part-time faculty whose major appointment is Administrative/Professional or Civil Service

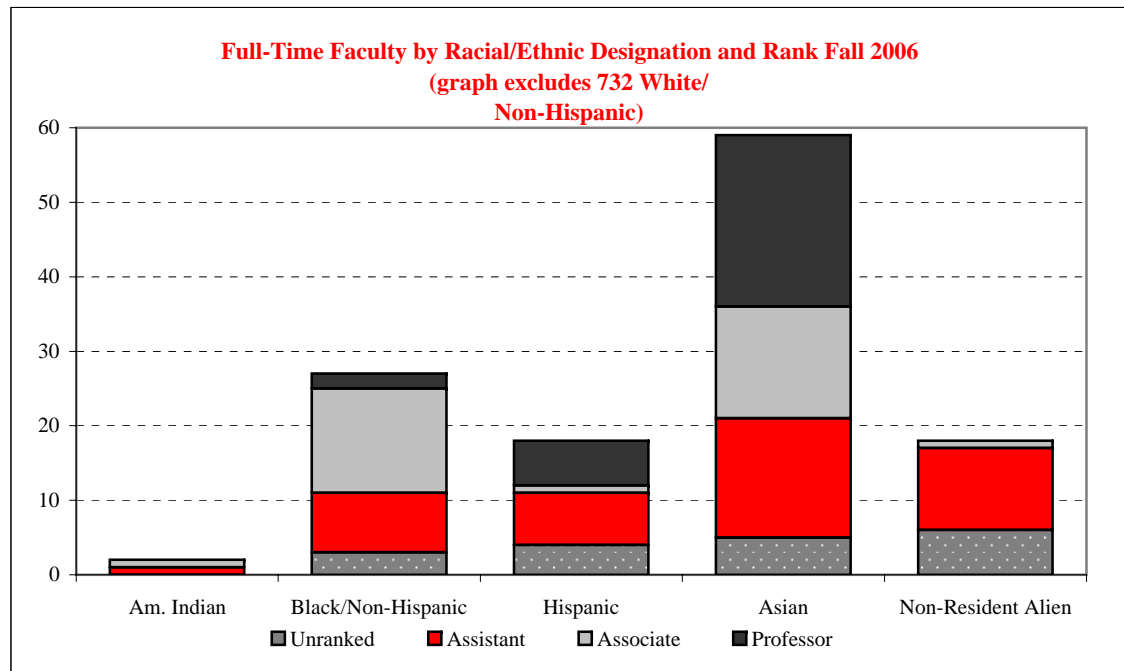


# FACULTY

## RANK AND RACIAL/ETHNIC DESIGNATION ~ FALL 2006

<u>Faculty - Full-Time</u>	American	Black/	Asian/		White/	Not	Non-	<u>Total</u>
	Indian/ Native <u>Alaskan</u>	Non- Hispanic	Pacific Islander	Hispanic	Non- Hispanic	Reported	Resident Alien	
Professor	--	2	23	6	209	--	--	240
Associate Professor	1	14	15	1	191	--	1	223
Assistant Professor	1	8	16	7	185	--	11	228
Unranked	--	3	5	4	147	--	6	165
Total	2	27	59	18	732	--	18	856

<u>Faculty - Part-Time</u>	American	Black/	Asian/		White/	Not	Non-	<u>Total</u>
	Indian/ Native <u>Alaskan</u>	Non- Hispanic	Pacific Islander	Hispanic	Non- Hispanic	Reported	Resident Alien	
Unranked	1	4	3	3	241	3	2	257

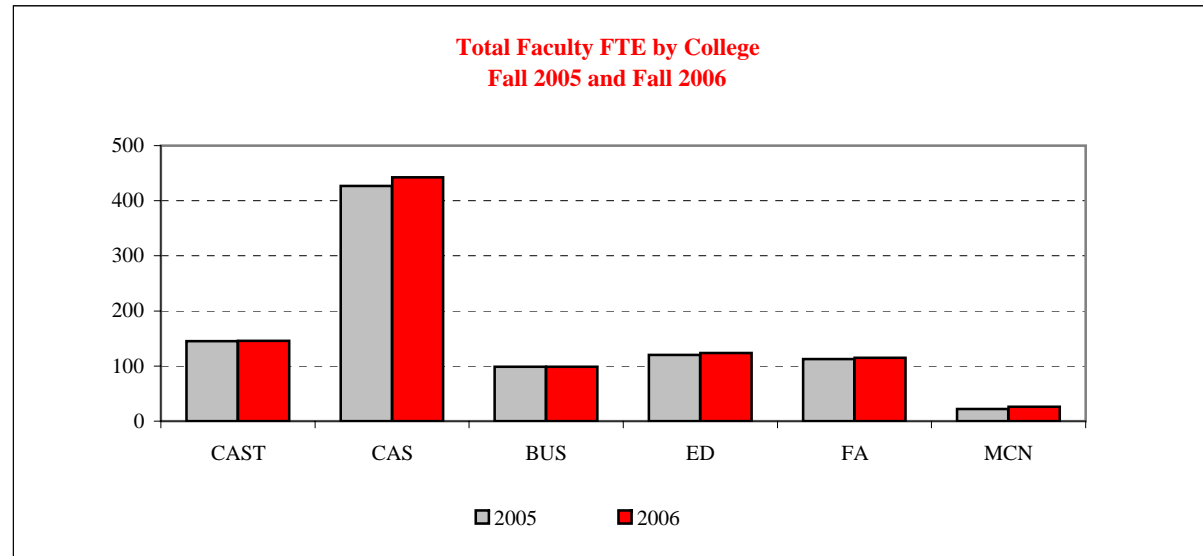




# FACULTY

## FTE<sup>1</sup> BY COLLEGE, GENDER & TENURE STATUS ~ FALL 2005 and FALL 2006

College	Fall 2005					Fall 2006				
	Tenured/Tenure Track		Non-Tenure Track		Total	Tenured/Tenure Track		Non-Tenure Track		Total
	Male	Female	Male	Female		Male	Female	Male	Female	
Applied Science and Technology	68.0	41.0	12.9	23.2	145.1	70.0	40.0	12.5	23.4	145.9
Arts and Sciences	211.0	127.0	39.5	49.2	426.7	202.0	124.0	55.7	61.0	442.8
Business	62.5	20.0	8.8	7.5	98.8	60.0	19.0	10.7	9.0	98.7
Education	33.0	37.0	8.7	41.6	120.3	30.0	40.0	10.8	42.7	123.5
Fine Arts	57.8	42.0	5.2	7.4	112.4	54.0	41.0	9.5	10.3	114.8
Mennonite College of Nursing	0.0	9.0	0.3	12.7	22.0	0.0	11.0	0.0	15.2	26.2
<u>Total</u>	432.3	276.0	75.4	141.6	925.2	416.0	275.0	99.1	161.6	951.7



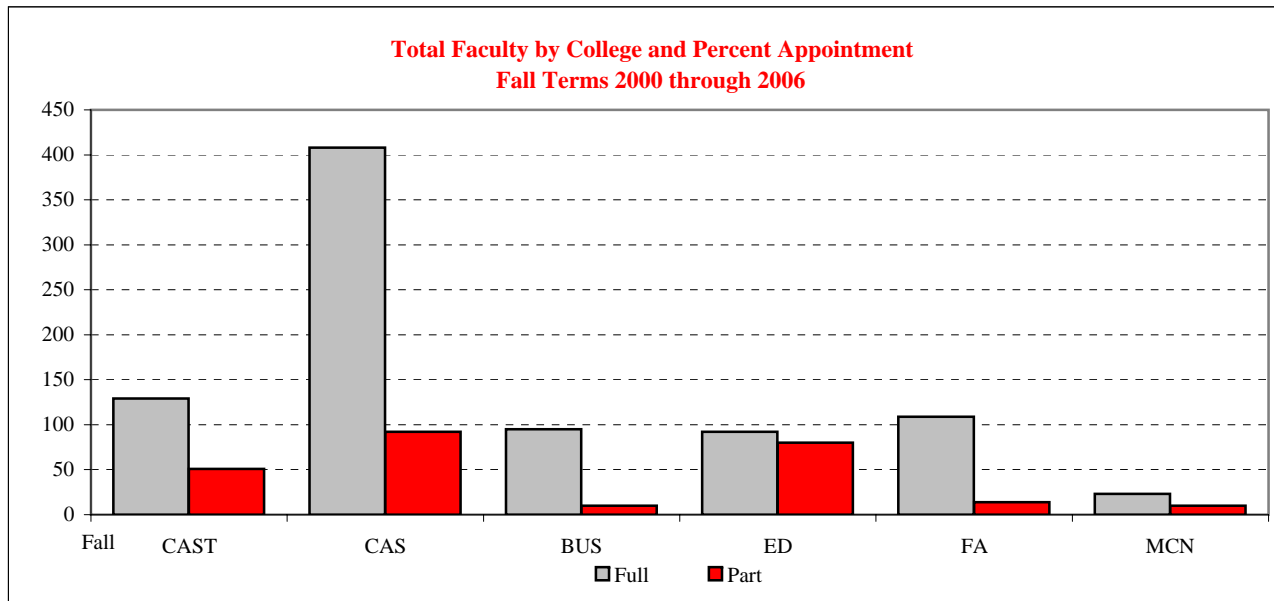
<sup>1</sup> Full-Time Equivalent (FTE) Faculty



# FACULTY

## COLLEGE & PERCENT APPOINTMENT ~ FALL 2000 through FALL 2006

College	2000		2001		2002		2003		2004		2005		2006	
	Full	Part	Full	Part	Full	Part	Full	Part	Full	Part	Full	Part	Full	Part
Applied Science and Technology	126	52	127	54	129	47	131	44	131	47	129	49	129	51
Arts and Sciences	420	89	429	85	406	96	405	80	393	90	392	100	408	92
Business	90	29	92	24	91	19	94	18	93	14	91	11	95	10
Education	98	71	93	98	98	62	96	77	87	83	87	84	92	80
Fine Arts	106	18	107	14	105	19	103	13	109	11	109	15	109	14
Mennonite College of Nursing	15	12	17	9	18	11	17	6	18	12	21	15	23	10
<b>Total</b>	<b>855</b>	<b>271</b>	<b>865</b>	<b>284</b>	<b>847</b>	<b>254</b>	<b>846</b>	<b>238</b>	<b>831</b>	<b>257</b>	<b>829</b>	<b>274</b>	<b>856</b>	<b>257</b>





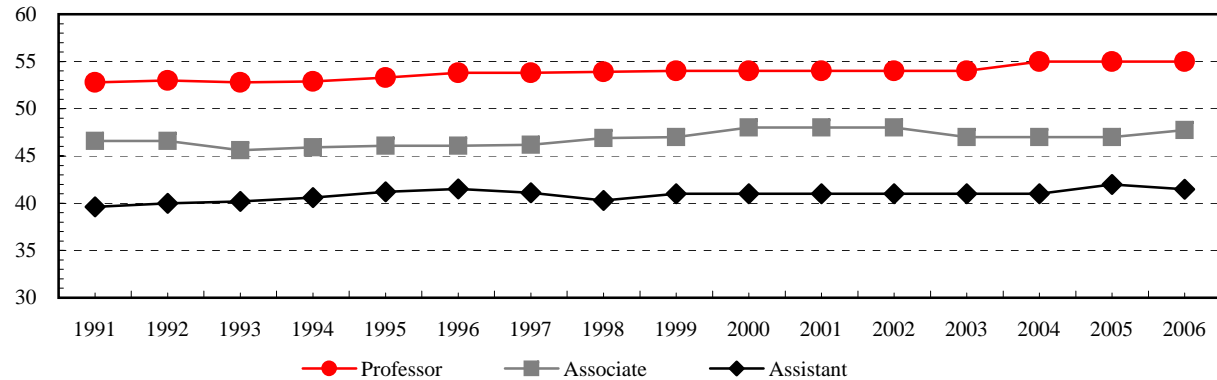


# FACULTY

## TENURED/TENURE TRACK DEPARTMENTAL, AGE BY RANK ~ FALL 2006

<u>Age<sup>1</sup> Range</u>	<u>Professor</u>	<u>Associate Professor</u>	<u>Assistant Professor</u>	<u>Total</u>
29 or Less	--	--	4	4
30 - 34	--	4	50	54
35 - 39	--	29	54	83
40 - 44	17	52	45	114
45 - 49	39	48	30	117
50 - 54	52	43	26	121
55 - 59	65	29	14	108
60 - 64	53	13	5	71
65 or Over	14	5	--	19
Total	240	223	228	691

Average Age<sup>1</sup> of Tenured/Tenure Track  
Departmental Faculty  
Fall 1991 through Fall 2006



<sup>1</sup> Age is calculated as of December 31<sup>st</sup> of the reported year.



# FACULTY/STAFF

## FALL TO FALL RETENTION RATES

	Year of Initial Hire						
	<u>2000</u>	<u>2001</u>	<u>2002</u>	<u>2003</u>	<u>2004</u>	<u>2005</u>	<u>2006</u>
<u>New Full-Time Assistant Professors</u>							
Number of New Hires	50	53	56	42	31	25	33
Percent that Returned 2nd Fall	90.0	92.5	96.4	100.0	90.3	100.0	--
Percent that Returned 4th Fall	78.0	73.6	76.8	92.9	--	--	--
Percent that Returned 6th Fall	70.0	66.0	--	--	--	--	--
<u>New Full-Time Non Tenure-Track Faculty</u>							
Number of New Hires	39	45	31	20	14	30	42
Percent that Returned 2nd Fall	64.1	62.2	83.9	55.0	64.3	60.0	--
Percent that Returned 4th Fall	41.0	44.4	61.3	30.0	--	--	--
Percent that Returned 6th Fall	35.9	33.3	--	--	--	--	--
<u>New Full-Time Lab School Faculty</u>							
Number of New Hires	10	11	6	4	10	4	12
Percent that Returned 2nd Fall	80.0	81.8	50.0	75.0	100.0	75.0	--
Percent that Returned 4th Fall	80.0	63.6	33.3	75.0	--	--	--
Percent that Returned 6th Fall	50.0	54.5	--	--	--	--	--
<u>New Full-Time Administrative/Professional</u>							
Number of New Hires	81	92	78	52	70	93	95
Percent that Returned 2nd Fall	76.5	80.4	79.5	73.1	77.1	80.6	--
Percent that Returned 4th Fall	51.9	59.8	59.0	55.8	--	--	--
Percent that Returned 6th Fall	32.1	43.5	--	--	--	--	--
<u>New Full-Time Civil Service</u>							
Number of New Hires	156	133	101	27	24	111	93
Percent that Returned 2nd Fall	83.3	85.7	84.2	100.0	91.7	91.0	--
Percent that Returned 4th Fall	71.2	69.9	75.2	88.9	--	--	--
Percent that Returned 6th Fall	62.8	59.4	--	--	--	--	--

A new hire is defined as a staff member who was present that fall but not in the previous fall. He/she may have been hired any time between the two falls. A rehired person is counted as a new hire, if a year had elapsed between leaving and rehire. A person who changed appointment types, that was still employed by the University in a subsequent fall at a 50% or more FTE, was counted as being retained. Faculty include department faculty only.



# FACULTY/STAFF

## FALL TO FALL RETENTION RATES ~ MINORITY

	Year of Initial Hire						
	<u>2000</u>	<u>2001</u>	<u>2002</u>	<u>2003</u>	<u>2004</u>	<u>2005</u>	<u>2006</u>
<u>New Full-Time Assistant Professors</u>							
Number of New Hires	4	9	5	3	3	4	6
Percent that Returned 2nd Fall	100.0	77.8	80.0	100.0	66.7	100.0	--
Percent that Returned 4th Fall	100.0	66.7	80.0	100.0	--	--	--
Percent that Returned 6th Fall	75.0	55.6	--	--	--	--	--
<u>New Full-Time Administrative/Professional</u>							
Number of New Hires	13	18	11	12	10	6	11
Percent that Returned 2nd Fall	61.5	72.2	81.8	75.0	90.0	66.7	--
Percent that Returned 4th Fall	38.5	50.0	45.5	41.7	--	--	--
Percent that Returned 6th Fall	15.4	27.8	--	--	--	--	--
<u>New Full-Time Civil Service</u>							
Number of New Hires	20	16	12	3	2	18	13
Percent that Returned 2nd Fall	80.0	81.3	91.7	100.0	50.0	88.9	--
Percent that Returned 4th Fall	75.0	56.3	75.0	66.7	--	--	--
Percent that Returned 6th Fall	60.0	50.0	--	--	--	--	--

*Educating Illinois 2003-2010* charges the University with increasing the retention and promotion of faculty and staff from protected classes. In supporting University planning, these matrices display minority retention rates for new full-time assistant professors, administrative/professional and civil service staff.



ILLINOIS STATE UNIVERSITY

# RESOURCES



## DID YOU KNOW?

Braden Auditorium seats 3,457 on three levels and is named after Samuel J. Braden, who served as president from 1967 until 1970.

Braden Auditorium



# RESOURCES TOTAL EXPENDITURES & MANDATORY TRANSFERS ~ FISCAL YEARS 2002 through 2006

(Dollars in thousands)

	<u>Total Operating Funds by Fund Type</u>				
	<u>Fiscal Year 2002</u>	<u>Fiscal Year 2003</u>	<u>Fiscal Year 2004</u>	<u>Fiscal Year 2005</u>	<u>Fiscal Year 2006</u>
State Appropriated Tax Funds and					
University Income Fund	\$145,309.5	\$140,947.2	\$138,379.6	\$143,945.4	\$155,310.5
Gifts, Grants and Contracts	30,280.6	32,556.5	31,844.5	32,314.6	35,076.6
Agency	36,086.8	36,422.1	47,011.3	50,378.1	43,134.4
Bond Revenue/Other Auxiliary	53,680.6	48,213.1	45,921.3	46,087.9	49,947.0
Total <sup>1</sup>	\$265,357.5	\$258,138.9	\$263,156.7	\$272,726.0	\$283,468.5

	<u>State Appropriated Funds by Object Class</u>				
	<u>Fiscal Year 2002</u>	<u>Fiscal Year 2003</u>	<u>Fiscal Year 2004</u>	<u>Fiscal Year 2005</u>	<u>Fiscal Year 2006</u>
Personal Services	\$111,535.5	\$108,291.5	\$102,942.4	\$107,337.9	\$111,510.2
Contractual	17,912.6	14,077.1	16,673.9	16,800.0	20,967.5
Equipment and Books	6,907.3	5,669.9	6,129.5	6,395.4	8,320.9
Commodities	2,511.4	2,191.5	2,546.1	2,736.7	2,592.0
Other	6,442.9	6,447.6	5,782.5	6,310.7	7,479.3
Group Health Insurance	--	3,078.3	3,078.3	3,078.0	3,078.3
Medicare	--	1,191.3	1,227.0	1,286.7	1,362.3
Total	\$145,309.7	\$140,947.2	\$138,379.7	\$143,945.4	\$155,310.5

	<u>State Appropriated Funds by Functional Classification</u>				
	<u>Fiscal Year 2002</u>	<u>Fiscal Year 2003</u>	<u>Fiscal Year 2004</u>	<u>Fiscal Year 2005</u>	<u>Fiscal Year 2006</u>
Instruction	\$83,788.2	\$79,257.8	\$79,548.9	\$81,102.5	\$85,015.6
Operation and Maintenance	20,224.3	19,125.5	16,757.5	18,768.6	21,511.7
Institutional Support	16,994.4	15,307.1	14,543.4	14,947.2	16,363.0
Organized Research	2,804.2	1,809.3	2,483.9	2,553.4	2,980.8
Public Service	2,970.4	2,820.1	2,649.3	2,703.2	2,735.6
Academic Support	13,616.1	12,851.3	12,820.6	13,090.0	14,599.6
Student Services	4,912.1	5,506.5	5,270.7	6,415.5	7,663.6
Group Health Insurance	--	3,078.3	3,078.3	3,078.3	3,078.3
Medicare	--	1,191.3	1,227.0	1,286.7	1,362.3
Total	\$145,309.7	\$140,947.2	\$138,379.6	\$143,945.4	\$155,310.5

<sup>1</sup> Excludes payments made on behalf of the University (e.g. retirement contributions); \$33.5 million in FY02, \$35.1 million in FY03, \$103.6 million in FY04, \$43.8 million in FY05, and \$42.2 million in FY06.



# RESOURCES

## HISTORICAL STATE APPROPRIATIONS ~ FISCAL YEARS 2003 through 2007

(dollars in thousands)

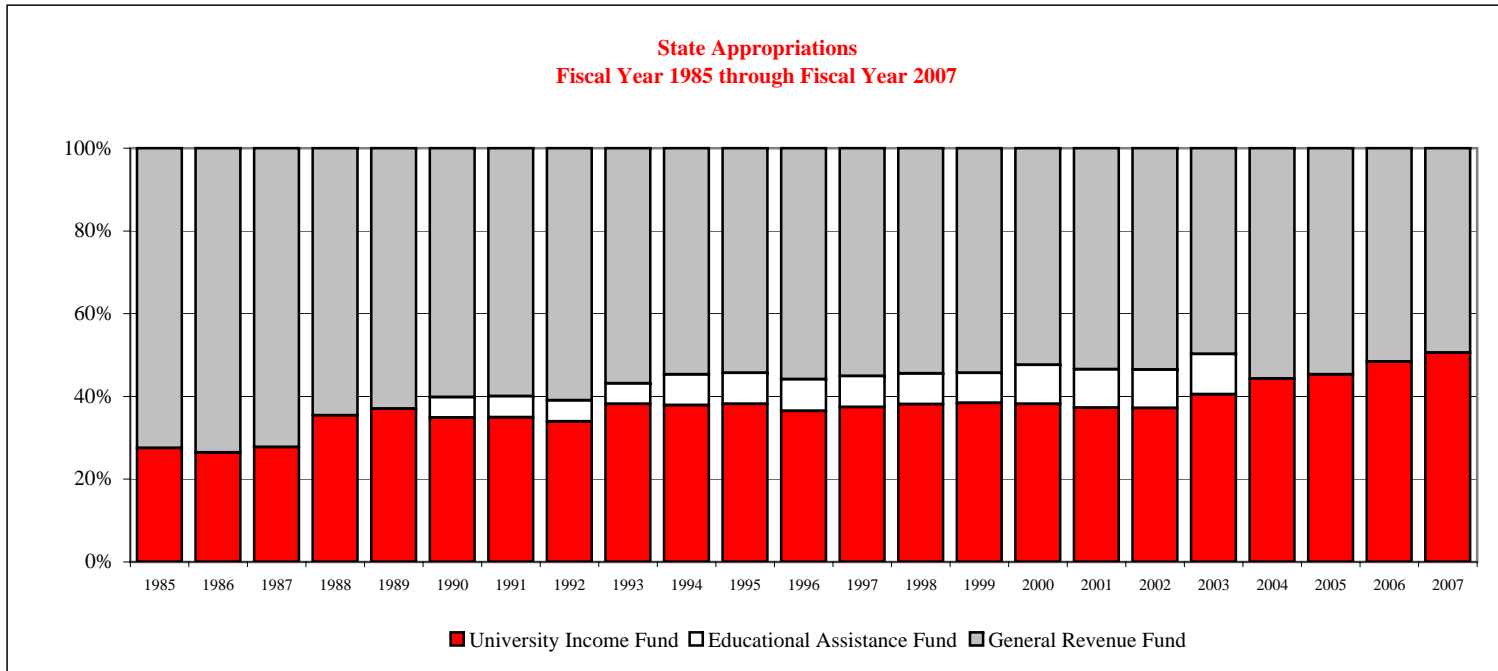
Historical State Appropriations and University Income Fund for Operations and Grants by Fund Source<sup>1</sup>

	<u>Fiscal Year 2003</u>	<u>Fiscal Year 2004</u>	<u>Fiscal Year 2005</u>	<u>Fiscal Year 2006</u>	<u>Fiscal Year 2007</u>
General Revenue Fund	\$73,278.8 <sup>2</sup>	\$80,452.0 <sup>3</sup>	\$80,452.0	\$80,452.0	\$81,457.5
University Income Fund	59,762.3	63,985.8	66,676.0	75,580.2	83,280.7
Educational Assistance Fund	14,394.7	0.0	0.0	0.0	0.0
Total Appropriation	\$147,435.8	\$144,437.8	\$147,128.0	\$156,032.2	\$164,738.2

<sup>1</sup> Excludes Retirement

<sup>2</sup> Original appropriation. Due to a mid-year rescission, the actual spending authority was \$70,876.1.

<sup>3</sup> Original appropriation. Due to a mid-year rescission, the actual spending authority was \$78,904.5.





# RESOURCES

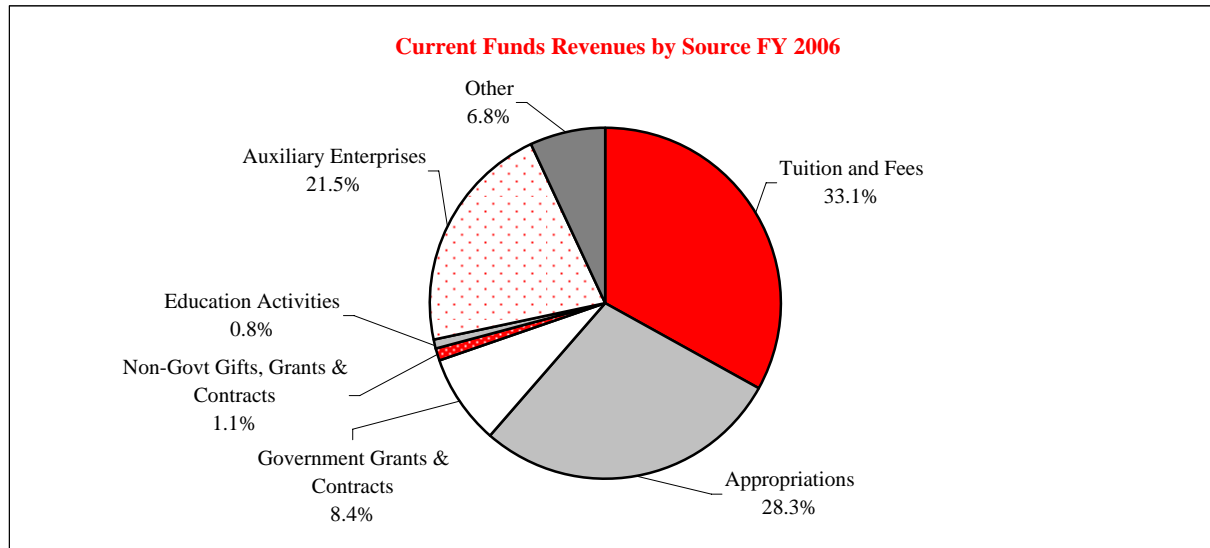
## CURRENT FUNDS REVENUES BY SOURCE ~ FISCAL YEARS 2005 AND 2006

<u>Source</u>	<u>Fiscal Year 2005</u>		<u>Fiscal Year 2006</u>	
	<u>Amount</u>	<u>Percent of Total</u>	<u>Amount</u>	<u>Percent of Total</u>
Tuition and Fees	\$94,592,757	33.8	\$95,396,990	33.1
State Government Tax Funds Appropriations	80,452,000	28.8	81,457,500	28.3
Government Grants and Contracts				
Federal	20,797,007	7.4	21,707,447	7.5
State	2,404,703	0.9	2,457,151	0.9
Non-Governmental Gifts, Grants and Contracts	3,053,169	1.1	3,192,260	1.1
Sales & Services of Education Activities	1,972,917	0.7	2,193,079	0.8
Sales & Services of Auxiliary Enterprises	57,752,634	20.7	61,863,707	21.5
Other Sources	18,571,408	6.6	19,679,899	6.8
Total	\$279,596,595 <sup>1</sup>	100.0%	\$287,948,033 <sup>2</sup>	100.0%

<sup>1</sup> Excludes \$43.8 million in Payments on Behalf of the University.

<sup>2</sup> Excludes \$42.2 million in Payments on Behalf of the University.

Source: Report of the Comptroller





# RESOURCES

## SPONSORED RESEARCH, INSTRUCTION, CREATIVE WORKS, & SERVICE

### Submissions (Proposals submitted between July 1 and June 30)

	Fiscal Year 2003		Fiscal Year 2004 <sup>1</sup>		Fiscal Year 2005		Fiscal Year 2006	
	Amount	Number	Amount	Number	Amount	Number	Amount	Number
Research	\$66,319,402	176	\$56,595,309	171	\$37,210,230	159	\$37,382,033	132
Instruction	17,669,330	96	16,575,958	120	15,497,255	90	9,086,459	107
Creativity	172	1	134,261	1	3,000	1	--	--
Public Service	6,678,940	69	5,031,998	36	10,659,302	34	3,878,898	40
Performance	--	--	--	--	--	--	--	--
Other	10,054,291	41	30,624,469	39	4,975,977	33	4,529,753	27
Total	\$100,722,135	383	\$108,961,995	367	\$68,345,764	317	\$54,877,143	306

### Awards (Approved between July 1 and June 30)

	Fiscal Year 2003		Fiscal Year 2004 <sup>1</sup>		Fiscal Year 2005		Fiscal Year 2006	
	Amount	Number	Amount	Number	Amount	Number	Amount	Number
Research	\$5,695,799	77	\$6,081,302	82	\$6,418,946	98	\$7,638,262	89
Instruction	6,870,761	90	7,675,333	148	3,278,838	100	5,859,754	94
Creativity	13,750	1	138,771	2	--	--	--	--
Public Service	3,961,409	69	4,653,571	60	2,890,754	33	2,935,127	42
Performance	--	--	--	--	--	--	--	--
Other	1,416,851	29	2,020,271	27	7,793,624	31	2,703,835	25
Total	\$17,958,570	266	\$20,569,248	319	\$20,382,162	262	\$19,136,978	250

### Awards by Type of Funding

	Fiscal Year 2003		Fiscal Year 2004 <sup>1</sup>		Fiscal Year 2005		Fiscal Year 2006	
	Amount	Percent	Amount	Percent	Amount	Percent	Amount	Percent
Federal Awards	\$8,059,950	44.9	\$9,306,694	45.2	\$11,006,392	54.0	\$9,342,249	48.8
Federal Flow-through	1,139,694	6.3	2,357,811	11.5	3,141,919	15.4	2,287,440	12.0
State Awards	5,513,798	30.7	4,473,942	21.8	2,976,389	14.6	4,609,945	24.1
Corporate Awards	853,995	4.8	899,805	4.4	128,706	0.6	141,500	0.7
Other Awards	2,391,133	13.3	3,530,996	17.2	3,128,756	15.4	2,755,844	14.4
Total Awards	\$17,958,570	100.0	\$20,569,248	100.0	\$20,382,162	100.0	\$19,136,978	100.0

<sup>1</sup> Includes Conference Services contracts.

*Educating Illinois 2003-2010* calls for the University to increase the number of external grant and contract submissions to 400 and the value of external contracts and awards to \$30 million.



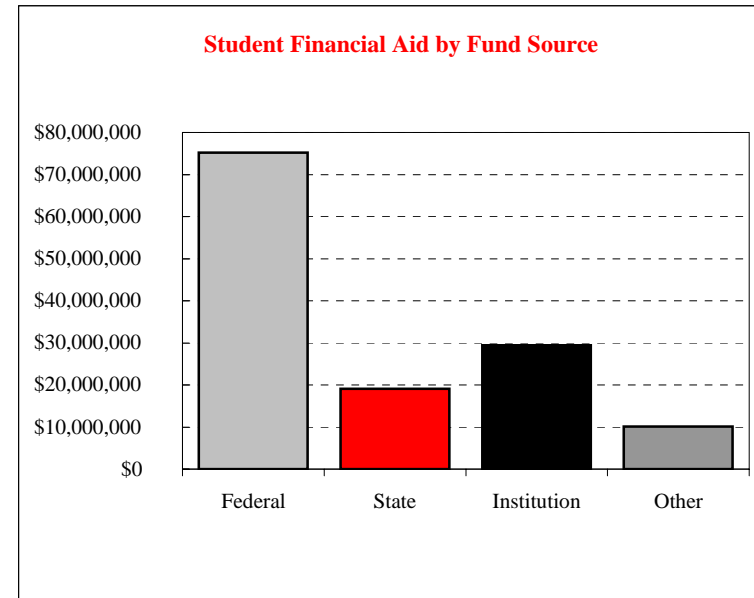
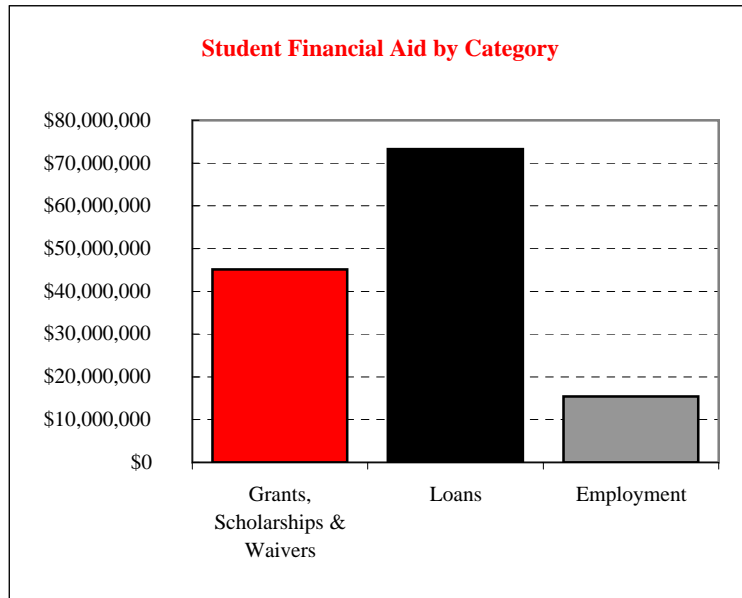


# RESOURCES

## STUDENT FINANCIAL AID & INSTITUTIONAL SUPPORT ~ FISCAL YEAR 2006<sup>1</sup>

Type	Fund Source					Number of Students Receiving Each Type of Aid
	Federal	State	Institution	Other	Total	
Grants, Scholarships & Waivers	\$9,446,126	\$19,070,353	\$14,799,168	\$1,816,157	\$45,131,804	9,792
Loans	\$64,998,848	--	--	\$8,267,858	\$73,266,706	10,472
Employment	\$732,262	--	\$14,654,745	--	\$15,387,007	6,151
Total	\$75,177,236	\$19,070,353	\$29,453,913	\$10,084,015	\$133,785,517	

Approximately 74 percent of all students who attend the University receive assistance through loans, scholarships, tuition waivers, grants, and employment.



<sup>1</sup> The Financial Aid Fiscal Year is Fall, Spring and Summer.



# RESOURCES

## UNDERGRADUATE STUDENT TUITION & FEE RATES

### Resident

School Year	Tuition Plan	Per Credit Hour	
		Tuition Rate	Required Fees
2000-01	All	\$107.30	\$39.20
2001-02	All	111.06	40.57
2002-03 <sup>2</sup>	All	121.33	40.57
2003-04 <sup>3</sup>	All	137.43	40.57
2004-05	New <sup>1</sup>	160.00	43.20
	Continuing	137.43	40.57
2005-06	New <sup>1</sup>	180.00	46.70
	Continuing 2 Yr	160.00	43.20
	Continuing 3+ Yr	137.43	40.57
2006-07	New <sup>1</sup>	205.00	52.45
	Continuing 2 Yr	180.00	46.70
	Continuing 3 Yr	160.00	43.20
	Continuing 4+ Yr	137.43	40.57

### Non-Resident

School Year	Tuition Plan	Per Credit Hour	
		Tuition Rate	Required Fees
2000-01	All	\$321.90	\$39.20
2001-02	All	242.50	40.57
2002-03 <sup>2</sup>	All	261.00	40.57
2003-04 <sup>3</sup>	All	286.43	40.57
2004-05	New <sup>1</sup>	334.00	43.20
	Continuing	286.43	40.57
2005-06	New <sup>1</sup>	376.00	46.70
	Continuing 2 Yr	334.00	43.20
	Continuing 3+ Yr	286.43	40.57
2006-07	New <sup>1</sup>	428.00	52.45
	Continuing 2 Yr	376.00	46.70
	Continuing 3 Yr	334.00	43.20
	Continuing 4+ Yr	286.43	40.57

### Full-Time (based on 15 credit hours per semester) Annual

Insurance required of all students			
taking 9 or more credit hours	Tuition	Required Fees	Total
\$176.00	\$3,219.00	\$940.80	\$4,335.80
172.00	3,331.80	973.68	4,477.48
180.00	3,639.90	1,217.10	5,037.00
190.00	4,122.90	1,217.10	5,530.00
232.00	4,800.00	1,296.00	6,328.00
232.00	4,122.90	1,217.10	5,572.00
290.00	5,400.00	1,401.00	7,091.00
290.00	4,800.00	1,296.00	6,386.00
290.00	4,122.90	1,217.10	5,630.00
316.00	6,150.00	1,573.50	8,039.50
316.00	5,400.00	1,401.00	7,117.00
316.00	4,800.00	1,296.00	6,412.00
316.00	4,122.90	1,217.10	5,656.00

### Full-Time (based on 15 credit hours per semester) Annual

Insurance required of all students			
taking 9 or more credit hours	Tuition	Required Fees	Total
\$176.00	\$9,657.00	\$940.80	\$10,773.80
172.00	7,275.00	973.68	8,420.68
180.00	7,830.00	1,217.10	9,227.10
190.00	8,592.90	1,217.10	10,000.00
232.00	10,020.00	1,296.00	11,548.00
232.00	8,592.90	1,217.10	10,042.00
290.00	11,280.00	1,401.00	12,971.00
290.00	10,020.00	1,296.00	11,606.00
290.00	8,592.90	1,217.10	10,100.00
316.00	12,840.00	1,573.50	14,729.50
316.00	11,280.00	1,401.00	12,997.00
316.00	10,020.00	1,296.00	11,632.00
316.00	8,592.90	1,217.10	10,126.00

<sup>1</sup> New - Students enrolled for their first semester in a degree-seeking program and in attendance on census day.

<sup>2</sup> Prior to fall 2002 fees were capped at 12 hours per semester; Beginning in fall 2002 fees were charged for each credit hour up to and including 16 hours per semester (no additional fees charged for credit hours in excess of 16 hours per semester).

<sup>3</sup> Guaranteed tuition and fees (insurance not included) freeze began in fall 2003; the number of years tuition will remain frozen depends on primary major/sequence carried on the last day of the last undergraduate semester attended within the four continuous calendar years after being classified as enrolled as a degree-seeking student.



# RESOURCES

## GRADUATE STUDENT TUITION & FEE RATES

### Resident

School Year	Tuition Plan	Per Credit Hour	
		Tuition Rate	Required Fees
2000-01	All	\$108.30	\$39.20
2001-02	All	112.14	40.57
2002-03 <sup>2</sup>	All	122.49	40.57
2003-04	New <sup>1</sup>	138.43	40.57
	Continuing	122.49	40.57
2004-05	All	145.00	43.20
2005-06	All	170.00	46.70
2006-07	All	185.00	52.45

### Non-Resident

School Year	Tuition Plan	Per Credit Hour	
		Tuition Rate	Required Fees
2000-01	All	\$324.90	\$39.20
2001-02	All	245.00	40.57
2002-03 <sup>2</sup>	All	265.00	40.57
2003-04	New <sup>1</sup>	288.43	40.57
	Continuing	265.00	40.57
2004-05	All	303.00	43.20
2005-06	All	355.00	46.70
2006-07	All	386.00	52.45

### Full-Time (based on 9 credit hours per semester) Annual

Insurance required of all students			
taking 9 or more credit hours	Tuition	Required Fees	Total
\$176.00	\$1,949.40	\$705.60	\$2,831.00
172.00	2,018.52	730.26	2,920.78
180.00	2,204.82	730.26	3,115.08
190.00	2,491.74	730.26	3,412.00
190.00	2,204.82	730.26	3,125.08
232.00	2,610.00	777.60	3,619.60
290.00	3,060.00	840.60	4,190.60
316.00	3,330.00	944.10	4,590.10

### Full-Time (based on 9 credit hours per semester) Annual

Insurance required of all students			
taking 9 or more credit hours	Tuition	Required Fees	Total
\$176.00	\$5,848.20	\$705.60	\$6,729.80
172.00	4,410.00	730.26	5,312.26
180.00	4,770.00	730.26	5,680.26
190.00	5,191.74	730.26	6,112.00
190.00	4,770.00	730.26	5,690.26
232.00	5,454.00	777.60	6,463.60
290.00	6,390.00	840.60	7,520.60
316.00	6,948.00	944.10	8,208.10

<sup>1</sup> New - Students enrolled for their first semester in a degree-seeking program and in attendance on census day.

<sup>2</sup> Prior to fall 2002 fees were capped at 12 hours per semester; Beginning in fall 2002 fees charged for each credit hour up to and including 16 hours per semester - no additional fees charged for credit hours in excess of 16 hours per semester.





ILLINOIS STATE UNIVERSITY

# REFERENCE



## DID YOU KNOW?

Illinois State University has granted 191,932 degrees since Fiscal Year 1860.

The University has 164,658 living alumni.

Commencement in the outdoor amphitheatre 1963



# REFERENCE

CIP	Program	B.A.	B.S.	B.S. Ed.	B.M. Ed.	B.S.W.	B.F.A.	B.M.
01.0000	Agriculture		x					
01.0102	Agribusiness		x					
09.0101	Communication Studies	x	x					
09.0102	Mass Communication	x	x					
09.0401	Journalism	x	x					
09.0902	Public Relations	x	x					
11.0103	Information Systems		x					
11.0701	Computer Science		x					
11.0901	Telecommunications Management		x					
13.1001	Special Education		x	x				
13.1202	Elementary Education		x	x				
13.1203	Middle Level Teacher Education		x	x				
13.1209	Early Childhood Education		x	x				
13.1303	Business Teacher Education	x	x	x				
13.1307	Health Education		x	x				
13.1309	Technology Education		x					
13.1312	Bachelor of Music Education				x			
13.1314	Physical Education	x	x	x				
13.1318	Social Sciences Education	x	x					
15.0612	Industrial Technology		x					
16.0501	German	x						
16.0901	French	x						
16.0905	Spanish	x						
19.0101	Family and Consumer Sciences	x	x					
23.0101	English	x						
24.0101	Interdisciplinary Studies	x	x					
24.0102	University Studies	x	x					
26.0101	Biological Sciences		x					
26.0202	Biochemistry and Molecular Biology		x					
27.0101	Mathematics	x	x					
31.0301	Recreation and Park Administration		x					
31.0505	Exercise Science		x					
38.0101	Philosophy	x						

# UNDERGRADUATE PROGRAM INVENTORY ~ FALL 2006

CIP	Program	B.A.	B.S.	B.S. Ed.	B.M. Ed.	B.S.W.	B.F.A.	B.M.
40.0501	Chemistry		x					
40.0601	Geology		x					
40.0801	Physics		x					
42.0101	Psychology	x	x					
43.0104	Criminal Justice Sciences	x	x					
44.0701	Bachelor of Social Work				x			
45.0201	Anthropology	x	x					
45.0601	Economics	x	x					
45.0701	Geography	x	x					
45.1001	Political Science	x	x					
45.1101	Sociology	x	x					
50.0501	Theatre	x	x					
50.0701	Art	x	x					
50.0702	B.F.A. in Art						x	
50.0901	Music (Liberal Arts)	x	x					
50.0903	Music Performance							x
50.9999	Arts Technology	x	x					
51.0204	Speech Pathology and Audiology		x					
51.0706	Health Information Management		x					
51.0913	Athletic Training		x					
51.1005	Clinical Laboratory Science		x					
51.1601	Nursing		x					
51.2202	Environmental Health		x					
51.2206	Safety		x					
52.0201	Business Administration		x					
52.0301	Accountancy		x					
52.0801	Finance		x					
52.1101	International Business	x	x					
52.1201	Business Information Systems		x					
52.1301	Management		x					
52.1401	Marketing		x					
52.1701	Insurance		x					
54.0101	History	x	x					



# REFERENCE

# GRADUATE PROGRAM INVENTORY ~ FALL 2006

## Masters Level

CIP	Program	M.A.	M.S.	M.S.Ed.	M.M.Ed.	M.S.W.	M.F.A.	M.M.	M.B.A.	M.P.A.
01.0102	Agribusiness		x							
09.0101	Communication	x	x							
11.0103	Information Systems		x							
13.0301	Curriculum and Instruction		x	x						
13.0401	Educational Administration		x	x						
13.0501	Instructional Technology and Design		x							
13.1001	Special Education		x	x						
13.1312	Master of Music Education				x					
13.1315	Reading			x						
15.0612	Technology		x							
16.0101	Foreign Languages	x								
19.0101	Family and Consumer Sciences	x	x							
23.0101	English	x	x							
23.0401	Writing	x	x							
26.0101	Biological Sciences		x							
27.0101	Mathematics	x	x							
31.0501	Kinesiology and Recreation		x							
40.0501	Chemistry		x							
40.0699	Hydrogeology		x							
42.0101	Psychology	x	x							
42.0601	Clinical-Counseling Psychology	x	x							
43.0104	Criminal Justice Sciences	x	x							
44.0701	Master of Social Work				x					
45.0301	Historical Archaeology	x	x							
45.0601	Applied Economics	x	x							
45.1001	Political Science	x	x							
45.1101	Sociology	x	x							
50.0501	Theatre	x	x							
50.0501	M.F.A. in Theatre					x				
50.0701	Art	x	x							
50.0702	M.F.A. in Art					x				
50.0901	Master of Music							x		

## Masters Level

CIP	Program	M.A.	M.S.	M.S.Ed.	M.M.Ed.	M.S.W.	M.F.A.	M.M.	M.B.A.	M.P.A.
50.9999	Arts Technology		x							
51.0204	Speech Pathology and Audiology	x	x							
51.1605	Nursing		x							
52.0201	Business Administration							x		
52.0301	Master of Professional Accountancy								x	
52.0301	Accountancy		x							
54.0101	History	x	x							

## IBHE Approved Certificate Level

CIP	Program	P.B.	P.M.	S.S.P.	EMF/MP
13.0301	Alt. Route for Sec. Teacher Certification	x			
23.0401	Teaching of Writing High/Middle School	x			
13.0402	Director of Special Education		x		
13.0409	Education Admin. & General Admin.		x		
13.0411	Education Admin. & Superintendent		x		
13.0499	Educ. Adm. & Chief School Bus. Official		x		
42.1701	School Psychology			x	
51.1605	Family Nurse Practitioner				x

## Doctoral Level

CIP	Program	D.A.	Ed.D.	Ph.D.
13.0301	Curriculum and Instruction		x	
13.0401	Educational Administration		x	x
13.1001	Special Education		x	
13.1311	Mathematics Education			x
23.0101	English Studies			x
26.0101	Biological Sciences			x
42.1701	School Psychology			x
51.0204	Audiology	x		



# REFERENCE

# PEER INSTITUTIONS

## Illinois Board of Higher Education Comparison Group

Institution	State
University of Alabama, Birmingham	AL
Northern Arizona University	AZ
University of California, Santa Cruz	CA
University of Northern Colorado	CO
Florida Atlantic University	FL
University of South Florida	FL
Georgia State University	GA
Illinois State University	IL
Ball State University	IN
Indiana State University, Terre Haute	IN
Indiana University, Indianapolis	IN
University of Louisville	KY
University of New Orleans	LA
Western Michigan University	MI
University of Missouri, Kansas City	MO
University of Southern Mississippi	MS
University of North Carolina, Greensboro	NC
Rutgers University, Camden Campus	NJ
SUNY at Albany	NY
Cleveland State University	OH
Ohio University, Athens	OH
University of Toledo	OH
University of South Dakota, Vermillion	SD
University of Memphis	TN
Texas A & M University, Commerce	TX
Texas Woman's University	TX
University of Houston, University Park	TX
University of North Texas	TX
University of Texas, Dallas	TX
University of Wisconsin, Milwaukee	WI

## Illinois Board of Higher Education Subset

Institution	State
Northern Arizona University	AZ
University of Northern Colorado	CO
Florida Atlantic University	FL
Georgia State University	GA
Illinois State University	IL
Ball State University	IN
Indiana State University, Terre Haute	IN
University of New Orleans	LA
Western Michigan University	MI
University of Southern Mississippi	MS
University North Carolina, Greensboro	NC
Cleveland State University	OH
University of Toledo	OH
University of Memphis	TN
Texas A & M University, Commerce	TX
University of North Texas	TX

## Benchmark Group used for most Comparison Studies

Institution	State
University of California, Riverside	CA
University of California, Santa Cruz	CA
Illinois State University	IL
Ball State University	IN
University of North Carolina, Greensboro	NC
Bowling Green University	OH
Miami University	OH
Clemson University	SC
University of Wisconsin, Milwaukee	WI





# REFERENCE

## UNIVERSITY DEFINITIONS

### STUDENT TERMS

**Census Day:** The University's official date for enrollment. The first day of class following the 10<sup>th</sup> day of class in each semester.

**Certificates:** Illinois State University currently offers three types of certificates at the graduate level:

- **Graduate Certificate:** Requires a minimum of nine but no more than 17 semester hours of graduate courses beyond the bachelor's degree. This type of certificate is **not** approved/reviewed by the IBHE.
- **Post-Baccalaureate Graduate Certificate:** Requires a minimum of 18 semester hours of graduate courses beyond the baccalaureate degree, but less than required for a masters' degree. This type of certificate is approved/reviewed by the IBHE.
- **Post-Master's Graduate Certificate:** Requires a minimum of 24 semester hours of graduate courses beyond the master's degree but less than a doctoral degree. This type of certificate is approved/reviewed by the IBHE.

**CIP Codes:** Classification of Instructional Programs. A federal coding system used for reporting purposes.

**Cohort:** The number of new beginning freshmen in a given fall semester. Used in calculating retention of students returning for their second fall semester and in calculating University graduation rates.

**Credit Hour:** A standard unit of measuring course work; credit hours are assigned to a particular course and count toward graduation.

**Degree Program:** A program which has specific requirements and number of credits, including a common core for all students seeking a particular degree. Degrees are approved through a curricular process through the Illinois Board of Higher Education.

**Full-Time Enrollment:** For undergraduate students – 12 or more credit hours; for graduate students nine or more credit hours per semester.

**Full-Time Equivalent (FTE):** Total number of credit hours divided by 15 for undergraduate students; and by nine for graduate students.

**Grade Point Average (GPA):** The total number of grade points divided by the total graded semester hours attempted at Illinois State University.

**Graduation Rate:** Total number of native students who complete their degree within 6 years of normal time divided by the number in the original cohort.

**Headcount:** The count of each student enrolled at the University.

**Interdisciplinary:** A program or course that spans two or more academic disciplines.

**Major or Program:** A cohesive combination of courses, including introductory, intermediate, and advanced course work, that designates a student's primary area of specialization.

**Minorities:** Includes American Indian/Native Alaskan, Black/Non-Hispanic, Asian/Pacific Islander, and Hispanic racial/ethnic designations. Non-Resident Alien is not included as a minority.

**Native Students:** Students who start as new beginning freshmen at Illinois State University.

**New Beginning Freshmen:** First-time, first year students who have not attended any college since graduating from high school (includes students who attend a college or university the summer after high school graduation, students with advanced placement credits, and students who took courses for college credit while attending high school).

**New Students:** Students attending Illinois State University for the first time (Illinois State University baccalaureate recipients entering their first semester working on a second bachelor's degree are considered readmitted students).

**Non-Degree Seeking:** A student who has not been admitted to a program leading toward a degree; these include unclassified students, students-at-large, and students working toward a non-IBHE approved/reviewed graduate certificate.

**Non-Resident:** A student whose principal residence is not in Illinois.

**Non-Resident Alien:** International students who are neither a citizen or a permanent resident of the United States.



# REFERENCE

## UNIVERSITY DEFINITIONS

### STUDENT TERMS (CONTINUED)

**On-and Off-Campus:** Students are considered “off-campus” if all of their courses meet at a location other than a University facility; they are considered an “on-campus” student if any or all of their courses meet at a University facility.

**Retention Rate:** Number of new beginning freshmen who return for their second fall semester divided by the original cohort.

**Semester:** A semester at Illinois State is the 16-week academic session offered each fall and spring. The summer session is not considered a semester.

**Show Rate:** Ratio of students who enrolled compared to the number who were accepted.

**Transfer Student:** Students who previously attended one or more semesters at a community or four-year college after graduating from high school (whether or not any course work was completed).

**Unclassified Students:** A person who desires to take classes at the University without working toward a specific degree.

**Yield Rate:** Ratio of the number of students who were accepted compared to the number of students that applied.

### EMPLOYEE TERMS

**Administrative/Professional:** Appointments primarily for the purpose of mission support and include a wide range of responsibilities.

- Administrative (A):** Employees with primary executive, administrative and managerial assignments. These assignments involve planning, organizing, managing and directing the university and its sub units with a reporting line of three levels from the President and a salary level of 55.

- Managerial (M):** These employees are considered to be primary policy decision making administrators who report directly to the President or to one of the Vice Presidents of the University. This group would include the President, Vice Presidents, Deans and Associate Vice Presidents.

- Professional (P):** All Administrative/Professional employees who are not designated as Administrative (A) or Managerial (M).

**Civil Service:** Civil Service positions are governed by the State Universities Civil Service System. Candidates must demonstrate their ability to perform by passing a test specifically designed for the job. Areas of Civil Service employment include professional, technical, clerical, crafts and service. The civil service system has four classifications of employees:

- Exempt:** Excluded from overtime provisions of the Fair Labor Standards Act; typically managers and administrators.

- Non-Exempt:** Paid by the hour and eligible for overtime under provisions of the Fair Labor Standards Act.

- Negotiated:** Civil Service employees belonging to a union with a negotiated contract.

- Extra Help:** Hired to work without benefits for a limited time (up to 900 hours) and without requirement of a civil service examination.

**Emeritus:** Retired faculty with rank who continue employment at Illinois State University are accorded the privilege of retaining their professorial title after retirement with the added designation of the word "emeritus" or "emerita."

**Faculty:** Any Tenure-Track or Non-Tenure Track appointment, ranked or unranked, for the purpose of instruction, organized research, and/or public service in one of the academic (credit hour producing) departments and related areas.

**Departmental:** Faculty teaching in an academic department.

**Non-departmental:** Faculty in a non-academic department such as University College instructors.

**Lab School Associates:** Appointments that do not hold rank in an academic department and are assigned primarily to Thomas Metcalf School or University High School.

**Library Faculty:** Hold academic rank and are assigned primarily to the Library.



# REFERENCE

## UNIVERSITY DEFINITIONS

### EMPLOYEE TERMS (CONTINUED)

**Full-time:** A work schedule of 37.5 to 40 hours per week; considered to be 100 percent.

**Minorities:** Includes American Indian/Native Alaskan, Black Non-Hispanic, Asian/Pacific Islander, and Hispanic racial/ethnic designations. Non-Resident Alien is not included as a minority.

**Non-Tenure Track:** Appointments for full and part-time appointments are for a specific purpose and for a specified period of time appropriate to that purpose. No time served in any of the non-tenure track titles counts toward fulfillment of a probationary period leading to tenure.

**Part-time:** A work schedule of less than 100 percent.

**Tenure:** Tenure is an important means of protecting the rights of members of the faculty to freedom of inquiry, research, discourse, teaching, learning and publications. Tenure entails the faculty member's obligation to strive continuously to improve competence and to cooperate with colleagues in an effort to improve the quality of scholarship and teaching at the institution. The freedom and security provided through academic tenure are fundamental to the success of a university in fulfilling its obligations. After the expiration of a probationary period, faculty have permanent or continuous tenure, and their service should be terminated only for adequate cause, except in the case of retirement for age, or under extraordinary circumstances because of financial exigencies.

**Tenured/Tenure Track:** Tenure is granted by the University under the authority granted to the President by the Board of Trustees. Tenure appointments are held only in academic departments or similar academic units.

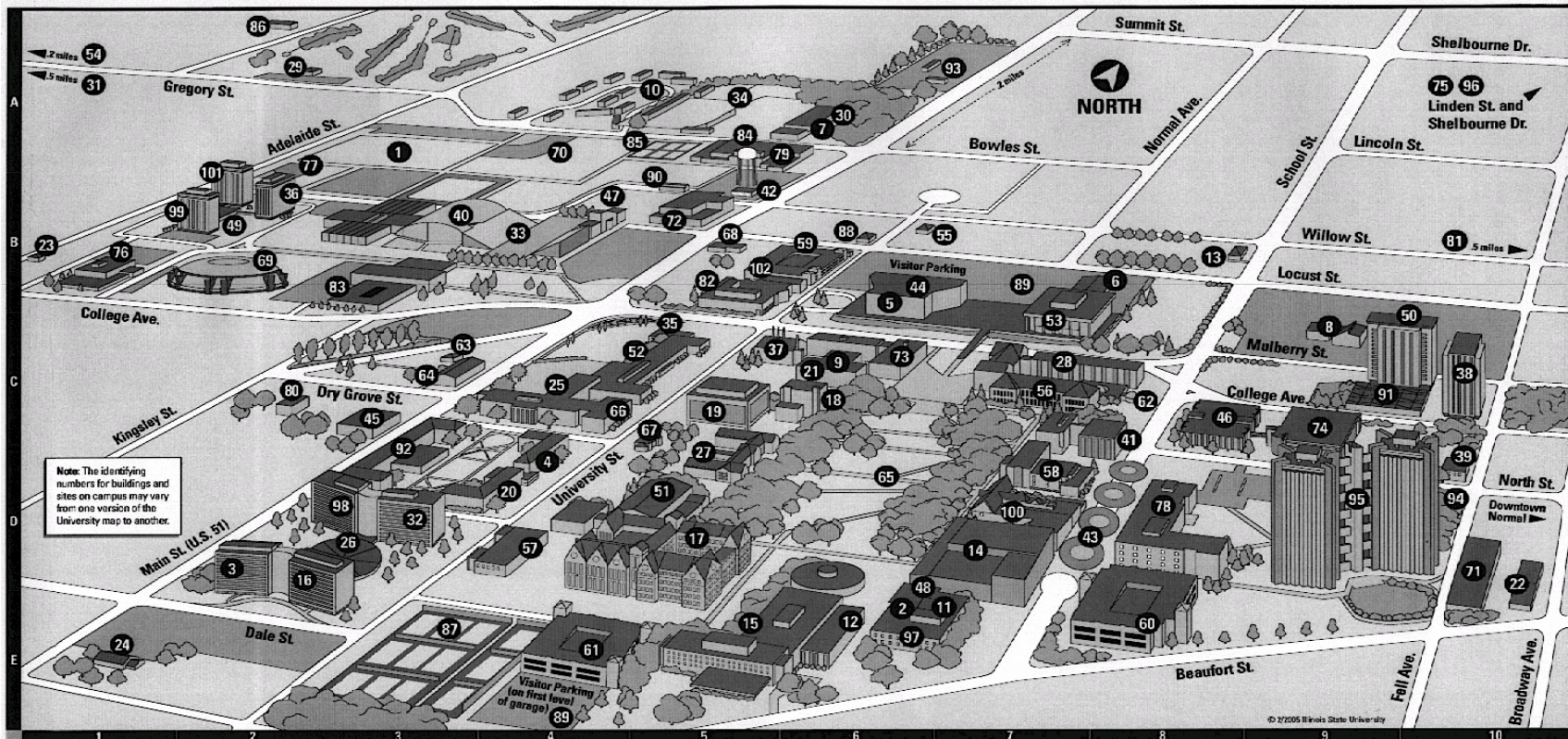
**Rank:** The academic ranks that are conferred for tenure at Illinois State University are: Professor, Associate Professor, and Assistant Professor. Promotion within the academic ranks is recommended by the Provost to the President for approval.

### OTHER TERMS

**IBHE:** Illinois Board of Higher Education, the statewide planning and coordinating board for higher education institutions in Illinois, approves/reviews degree programs, provides budget recommendations to the Governor and General Assembly, administers a variety of grant programs, approves operating authority for independent institutions, and maintains comprehensive high education databases.

**IPEDS:** The Integrated Postsecondary Education Data System conducted by National Center of Education Statistics (NCES). IPEDS began in 1986 and involves annual data collections. Survey data are required from all postsecondary institutions that have a Program Participation Agreement (PPA) with the Office of Postsecondary Education, U.S. Department of Education. IPEDS also requests limited data from approximately 3,000 other schools offering postsecondary education programs.

# CAMPUS MAP



- |   |   |   |   |  |
|---|---|---|---|--|
| 1 Adelaide Soccer Field - A3                                      | 22 Extended University - E10                        | 43 In Exchange - D8                                     | 64 Professional Development Building - C3                       | 85 University High School Tennis Courts - A5             |
| 2 Allen Theatre - E6  | 23 Eyestone School Museum - B1                      | 44 InfoCentre - B6                                      | 65 Quad - D6  | 86 University (President's) Residence - A2               |
| 3 Atkin Hall (ATK) - D2   | 24 Facilities Planning Building - E1                | 45 Instructional Technology and Development Center - C3 | 66 Rachel Cooper (RC) - C4                                      | 87 University Street Tennis Courts - E3                  |
| 4 Barton Hall - D4  | 25 Fairchild Hall (FH) - C4                         | 46 Julian Hall (JH) - C8                                | 67 Rambo House - C5   | 88 Vidette Building - B6                                 |
| 5 Bone Student Center/Bradren Auditorium - B6                     | 26 Feeney Dining Center - D3                        | 47 Kaufman Football Building - B4                       | 68 Recreation Services Building - B5                            | 89 Visitor Parking - B7 and E4                           |
| 6 Bowling & Billiards Center (BBC) - B8                           | 27 Fell Hall (FEL) - C5                             | 48 Kamp Recital Hall - E6                               | 69 Redbird Arena (RBA) - B2                                     | 90 Vitro Center (VT) - B5                                |
| 7 Campus Dining Services - A6                                     | 28 Felmley Hall of Science (FSA, FHS) - C8          | 49 Links Dining Center (LIN) - B2                       | 70 Redbird Baseball Field - A4                                  | 91 Vrooman Dining Center (VRO) - C9                      |
| 8 Campus Religious Center - C9                                    | 29 Golf Course, Illinois State University (GC) - A3 | 50 Manchester Hall - C10                                | 71 Research Services Building - D10                             | 92 Walker Hall (WAL) - C3                                |
| 9 Capen Auditorium - C6   | 30 Green Food Service Building, John - A6           | 51 McCormick Hall (MCH) - D5                            | 72 Ropp Agriculture Building (RAB) - B5                         | 93 Waller Parking and Transportation Building, Bill - A7 |
| 10 Cardinal Court - A5  | 31 Gregory Street Property - A1                     | 52 Metcalf School, Thomas (MLS) - C5                    | 73 Schroeder Hall (SCH) - C6                                    | 94 Watterson Dining Center (WD) - D10                    |
| 11 Centennial East (CE) - E7                                      | 32 Hamilton Hall - D3                               | 53 Milner Library (MLB) - C7                            | 74 Science Laboratory Building (SLB) - C9                       | 95 Watterson Towers - D9                                 |
| 12 Centennial West (CW) - E6                                      | 33 Hancock Stadium - B4                             | 54 Motorcycle Driving Range - A1                        | 75 Shelbourne Apartments - A10                                  | 96 Wellness House - A10                                  |
| 13 Center for Intercultural Relations - B8                        | 34 Harris Physical Plant, Carter - A5               | 55 Motorcycle Safety Program Office - B7                | 76 Smith Building, Nelson (NSB) - B1                            | 97 Westhoff Theatre - E6                                 |
| 14 Center for the Performing Arts - D7                            | 35 Hayden Auditorium - C5                           | 56 Moulton Hall (MLT) - C7                              | 77 Softball Field - B2  | 98 Whitten Hall - D3                                     |
| 15 Center for the Visual Arts and University Galleries (CVA) - E5 | 36 Haynie Hall - B2                                 | 57 Office of Residential Life Building - D4             | 78 Stevenson Hall, Adlai E. (STV) - D8                          | 99 Wilkins Hall - B2                                     |
| 16 Colby Hall (COL) - D2  | 37 Heating Plant - C5                               | 58 Old Union Building (OU) - D7                         | 79 Stroud Auditorium - A5                                       | 100 Williams Hall (WIH) - D7                             |
| 17 College of Business Building - D5                              | 38 Hewett Hall (HEW) - C10                          | 59 Parking Garage, North University Street - B6         | 80 Student Accounts Building - C2                               | 101 Wright Hall - B2                                     |
| 18 Cook Hall (CH) - C6  | 39 Honors Program - D10                             | 60 Parking Garage, School Street - E8                   | 81 Student Recreation Building (Willow and Beech Streets) - B10 | 102 211 North University Street - B5                     |
| 19 DeGarmo Hall (DEG) - C5  | 40 Horton Field House (HTN) - B3                    | 61 Parking Garage, South University Street - E4         | 82 Student Services Building - B5                               |  |
| 20 Dunn Hall - D4   | 41 Hovey Hall (Administration) - C8                 | 62 Planetarium - C8                                     | 83 Turner Hall (TUR) - B3                                       |  |
| 21 Edwards Hall (EDW) - C5  | 42 Hudson Building - B5                             | 63 Professional Development Annex - C3                  | 84 University High School (UH) - A5                             |  |