



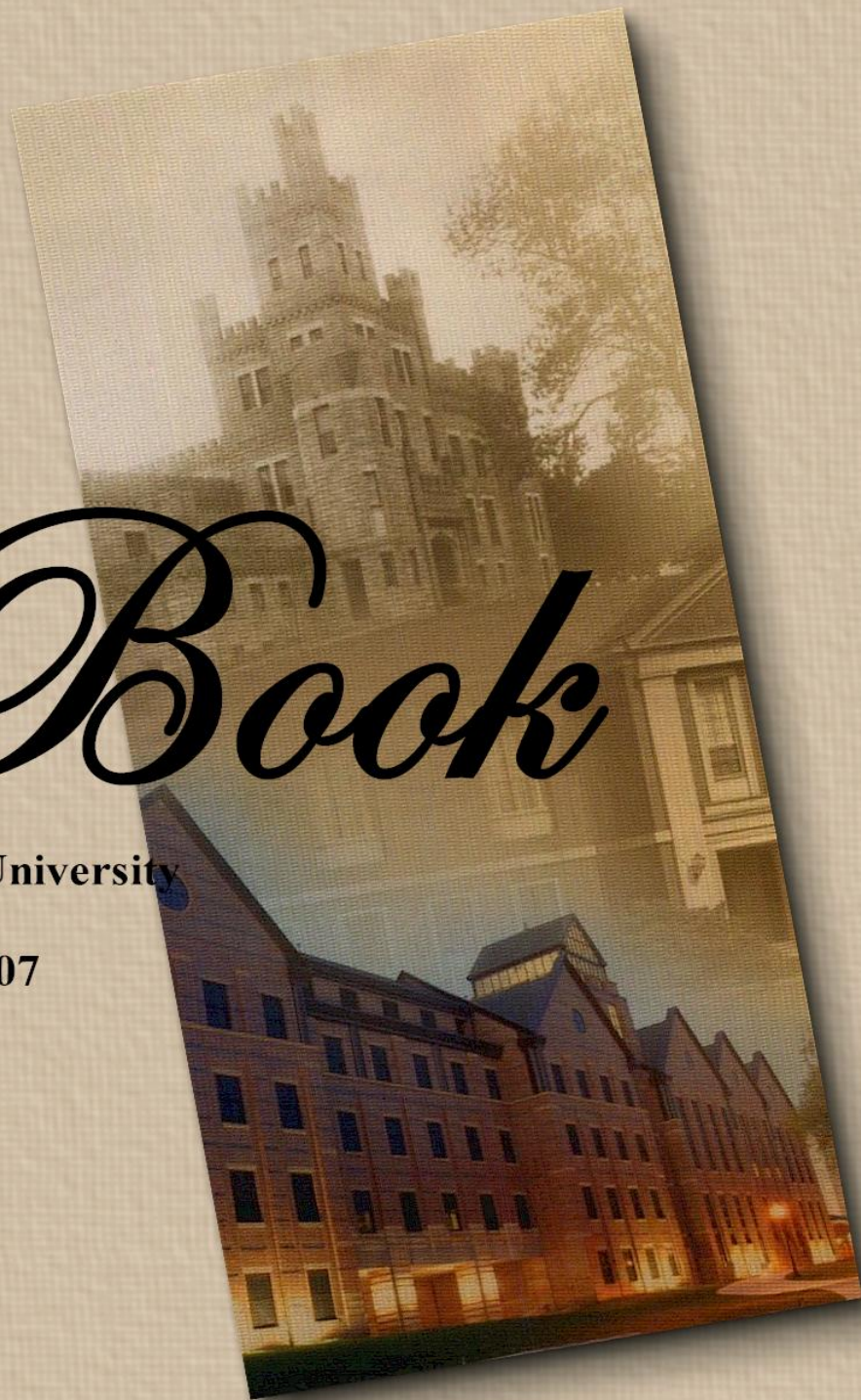
# Fact Book

Illinois State University

Fall 2007

Planning and Institutional Research

[www.pir.ilstu.edu](http://www.pir.ilstu.edu)  
(309) 438-8393





December 2007

Dear Colleague:

As Illinois State University celebrates its sesquicentennial, I am pleased to present the twenty-first annual *FactBook* prepared by the Planning and Institutional Research office. The *FactBook* contains a collection of useful information designed to answer frequently asked questions about Illinois State University -- Illinois' first public university.

Much has changed since Illinois State University opened its doors to students in 1857. The University first conferred undergraduate degrees in 1860, began offering master's degree programs in 1943 and introduced doctoral work in 1962. Currently, the University offers sixty-five undergraduate programs, forty-one master's programs, eight doctoral programs, a Specialist in School Psychology and seven graduate level certificates. In fiscal year 2007, the University conferred 5,047 degrees - 4,306 baccalaureates, 671 master's, 49 doctorates and 21 certificates. A total of 20,274 students are enrolled this fall (On- and Off-Campus) - 87.3 percent of whom are enrolled in undergraduate programs.

While the University has undergone many changes, our core values have remained steadfast. These values - individualized attention, public opportunity, active pursuit of learning and scholarship, diversity, and innovation - remain the foundation for everything we do. The goals articulated in the University's strategic plan, *Educating Illinois* emanate from these values, and collectively focus the institution on the actions necessary to be a first-choice public university for high-achieving, motivated students who seek individualized educational experiences combined with the resources of a large university. Data provided in the *FactBook* show that the University is attracting academically prepared students, and that our students are continuing and completing their education at historic rates.

I encourage you to use this publication to familiarize yourself with the basic facts about Illinois State University. Data are presented at the University and College level; information by department and major is available on-line at [www.pir.ilstu.edu](http://www.pir.ilstu.edu). Additional information on *Educating Illinois* is available at [www.educatingillinois.ilstu.edu](http://www.educatingillinois.ilstu.edu). If you have questions about the University or *Educating Illinois*, please contact the Planning and Institutional Research office by telephone at (309) 438-8393 or by e-mail at [pir@ilstu.edu](mailto:pir@ilstu.edu).

Sincerely,

A handwritten signature in black ink, appearing to read "Al Bowman".

Al Bowman  
President



# TABLE OF CONTENTS

## TABLE OF CONTENTS

### QUICK GLANCE

Board of Trustees & University Administrators .....	1
Deans, Department Chairs, and School Directors ~ Fall 2007 .....	2
University Facts ~ Fall 2007 .....	3
Undergraduate Students ~ Fall 2007 .....	4
Graduate Students ~ Fall 2007 .....	5
College Enrollment by Racial/Ethnic Designation ~ Fall 2007 .....	6
Departmental Faculty Characteristics ~ Fall 2007 .....	7
Strategic Plan <i>Educating Illinois 2003-2010</i> .....	8
Endowed Chairs ~ Fall 2007 .....	9

### ORGANIZATIONAL CHARTS

President ~ C. Alvin Bowman .....	11
Vice President Academic Affairs & Provost ~ John W. Presley .....	12
Vice President for Finance & Planning ~ Stephen M. Bragg .....	13
Vice President for Student Affairs ~ Steven L. Adams .....	14
Vice President for University Advancement ~ Dianne Ashby .....	15

### STUDENTS

#### New

Applications, Acceptances, & Enrollments ~ Fall 2007 .....	17
New Beginning Freshmen ~ Fall 2007 .....	18
American College Testing (ACT) ~ Fall 2001 through Fall 2007 .....	19
New Beginning Freshmen ~ Fall 2001 through Fall 2007 .....	20
New Undergraduate Transfers ~ Fall 2001 through Fall 2007 .....	21

#### Enrollment

Gender, Level, & Hours ~ Fall 2001 through Fall 2007 .....	22
College, Racial/Ethnic Designation & Level ~ Fall 2007 .....	23
College & Level ~ Fall 2001 and Fall 2007 .....	24
Racial/Ethnic Designation & Level ~ Fall 2001 and Fall 2007 .....	25
Class and Age ~ Fall 2007 .....	26
College and Gender ~ Fall 2001 and Fall 2007 .....	27
Non-Resident Alien Students ~ Fall 2001 and Fall .....	28
On-and Off-Campus & Class ~ Fall 2001 and Fall 2007 .....	29
Level ~ Fall 1997 through Fall 2007 .....	30
Class, Gender & Racial/Ethnic Designation ~ Fall 2007 .....	31
Class & Credit Hours ~ Fall 1997 through Fall 2007 .....	32



# TABLE OF CONTENTS (Continued)

## STUDENTS

### Enrollment (Continued)

Illinois Residents by County ~ Fall 2007 .....	33
State of Residence ~ Fall 2007 .....	34
Non-Resident Alien Students ~ Fall 2007 .....	35

### Degrees

College ~ Fiscal Year 2001 through Fiscal Year 2007 .....	36
Undergraduate, Gender & Racial/Ethnic Designation .....	37
Graduate, Level & Racial/Ethnic Designation .....	38

### Other

Class Size ~ Fall 2004 through Fall 2007 .....	39
Time-To-Degree ~ Fall 1996 through Fall 2003 .....	40
Retention and Graduation Rates .....	41

## FACULTY/STAFF

Employee Category Full-Time Equivalency ~ Fall 2006 and Fall 2007 .....	43
Type, Gender and Racial/Ethnic Designation ~ Fall 2007 .....	44
Rank and Racial/Ethnic Designation ~ Fall 2007 .....	45
Full-Time Equivalent (FTE) by College, Gender & Tenure Status ~ Fall 2006 and Fall 2007 .....	46
College & Percent Appointment ~ Fall 2001 through Fall 2007 .....	47
Tenured/Tenure Track Departmental Faculty, Age by Rank ~ Fall 2007 .....	48
Fall to Fall Retention Rates .....	49
Fall to Fall Retention Rates ~ Minority .....	50
Average Annual Salary by Rank ~ Fall 2001 through Fall 2006 .....	51

## RESOURCES

Total Expenditures & Mandatory Transfers ~ Fiscal Years 2003 through 2007 .....	53
Historical Appropriations and University Income Fund ~ Fiscal Years 2004 through 2008 .....	54
Current Funds Revenues by Source ~ Fiscal Years 2006 and 2007 .....	55
Sponsored Research, Instruction, Creative Works & Service .....	56
Student Financial Aid & Institutional Support ~ Fiscal Year 2007 .....	57
Undergraduate Student Tuition and Fee Rates .....	58
Graduate Student Tuition and Fee Rates .....	59

## REFERENCE

Undergraduate Program Inventory ~ Fall 2007 .....	61
Graduate Program Inventory ~ Fall 2007 .....	62
Peer Institutions .....	63



# TABLE OF CONTENTS (Continued)

## UNIVERSITY DEFINITIONS

Student Terms	.....	64
Employee Terms	.....	65
Other Terms	.....	66

## CAMPUS MAP



ILLINOIS STATE UNIVERSITY

# QUICK GLANCE

DID YOU KNOW?

Illinois State University was the first public university established in Illinois.

43 Students enrolled for the first term in fall 1857.



Fell Hall Honor Residents ~ 1920



# QUICK GLANCE

## BOARD OF TRUSTEES & UNIVERSITY ADMINISTRATORS

### Board of Trustees

---

	<u>Term Expires</u>
Carl Kasten - Chair	January 2007
J. D. Bergman	January 2011
Anne Davis	January 2011
Betty Kinser	January 2011
Joanne Maitland	January 2007
Michael McCuskey	January 2011
Stanley Ommen	January 2007
Ryan Cekander	Student Trustee

### Current Administrators

---

C. Alvin Bowman	President
John W. Presley	Vice President of Academic Affairs and Provost
Stephen M. Bragg	Vice President for Finance and Planning
Steven L. Adams	Vice President for Student Affairs
Dianne Ashby	Vice President for University Advancement

### Past and Current Presidents

---

Charles E. Hovey	1857-1862	Samuel J. Braden	1967-1970
Richard Edwards	1862-1876	David K. Berlo	1971-1973
Edwin C. Hewett	1876-1890	Gene A. Budig	1973-1977
John W. Cook	1890-1899	Lloyd Watkins	1977-1988
Arnold Thompkins	1899-1900	Thomas Wallace	1988-1995
David Felmley	1900-1930	David A. Strand	1995-1999
Harry A. Brown	1930-1933	Victor John Boschini Jr.	1999-2003
Raymond W. Fairchild	1933-1955	C. Alvin Bowman	2003-Present
Robert G. Bone	1956-1967		



# QUICK GLANCE

## DEANS, DEPARTMENT CHAIRS, AND SCHOOL DIRECTORS~ FALL 2007

### Applied Science and Technology

Agriculture  
 School of Information Technology  
 Criminal Justice Sciences  
 School of Kinesiology and Recreation  
 Health Sciences  
 Family and Consumer Sciences  
 Technology  
 Military Science

### Arts and Sciences

Biological Sciences  
 Chemistry  
 Economics  
 English  
 Languages, Literatures and Cultures  
 Geography-Geology  
 History  
 School of Communication  
 Mathematics  
 Philosophy  
 Physics  
 Politics and Government  
 Psychology  
 School of Social Work  
 Sociology and Anthropology  
 Communication Sciences & Disorders

### Dr. Jeffery A. Wood \*

Dr. Robert Rhykerd  
 Dr. Terry L. Dennis  
 Dr. David Falcone \*  
 Dr. David Q. Thomas \*  
 Dr. Marilyn J. Morrow  
 Dr. Connor M. Walters  
 Dr. Richard A. Boser  
 Lt. Col. Eugene Snyman

### Dr. Gary A. Olson

Dr. H. Tak Cheung  
 Dr. Clifford E. Dykstra  
 Dr. James Payne  
 Dr. Timothy Hunt  
 Dr. Daniel L. Everett  
 Dr. David H. Malone  
 Dr. William R. Biles  
 Dr. Larry W. Long  
 Dr. George F. Seelinger  
 Dr. James Swindler  
 Dr. Richard F. Martin, Jr.  
 Dr. Ali Riaz  
 Dr. Neil Skaggs \*  
 Dr. Wanda Bracy  
 Dr. Diane Zosky \*  
 Dr. Joseph Smaldino

### Business

Accounting  
 Finance, Insurance and Law  
 Management & Quantitative Methods  
 Marketing

### Education

Curriculum and Instruction  
 Educational Administration & Foundations  
 Special Education

### Fine Arts

School of Art  
 School of Music  
 School of Theatre

### Mennonite College of Nursing

### University Libraries

### Dr. Charles McGuire \*

Dr. Gerald McKean \*  
 Dr. Gary Koppenhaver  
 Dr. Jim Jawaher \*  
 Dr. Timothy A. Longfellow

### Dr. Deborah J. Curtis

Dr. Phyllis Metcalf-Turner  
 Dr. Patricia H. Klass  
 Dr. Jeffrey Bakken \*

### Dr. James Major \*

Dr. Anthony Crowley  
 Dr. Stephen B. Parsons \*  
 Dr. John Poole \*

### Dr. Sara Campbell \*

### Ms. Cheryl A. Elzy

\* Acting/Interim





# QUICK GLANCE

## UNIVERSITY FACTS ~ FALL 2007

### On-Campus Headcount Enrollment

Undergraduate	17,655
Graduate	2,449
Total	20,104

### Enrollment by Gender

Male	8,535
Female	11,569

### Enrollment by Racial/Ethnic Designation

Am. Indian/Alaskan Native	66
Black/Non-Hispanic	1,073
Asian/Pacific Islander	381
Hispanic	677
White/Non-Hispanic	16,695
Not Reported	783
Non-Resident Alien	429

### New Beginning Freshmen Profile

2007 Cohort	3,145
Average ACT score	24.2
Graduated in top ten percent of high school class.	11.4%

### Degrees Conferred in Fiscal Year 2007

Baccalaureate	4,306
Masters	671
IBHE Approved Certificates	21
Doctoral	49
Total	5,047

### Graduate Certificates Awarded

### Persistence and Graduation Rates

Freshmen returning for second fall.	83.3%
6-Year Graduation rate (before 7th fall).	65.1%

### Living Alumni

Illinois	110,643
Other U.S. States	42,283
Foreign Countries	857
Locations Unknown	15,163
Total	168,946

### Student Financial Aid

Seventy-four percent (14,964) of all students received financial support in Fiscal Year 2007.

### Student Housing

33.9 percent of students live in the residence halls; another 1.5 percent live in University-owned housing

### University Employees

Departmental Faculty	1,136
Non-Departmental Faculty	22
Library Faculty	29
Lab School Faculty	100
Managerial/Administrative	66
Professional	641
Civil Service	1,413
Total	3,407

### Milner Library Holdings

Volumes	1,632,215
Printed and electronic periodicals	25,514

### Research and Sponsored Programs

Proposals Awarded	234
Funds Awarded	\$18.1 million

### Grounds, Buildings, and Facilities

Approximately 970 acres; 143 buildings. The estimated replacement value of the facilities is \$1.1 billion.

### Fall 2007 Tuition & Fees Per Credit Hour -

#### New Students (State Resident)

Undergraduate	\$289.91
Graduate	\$250.91

### Fiscal Year 2007 Operating Expenditures

\$293.0 million

### University Accreditation Agencies

Higher Learning Commission of the North Central Association of Colleges and Schools; and National Council for Accreditation of Teacher Education.

### Student to Faculty Ratio

19:1

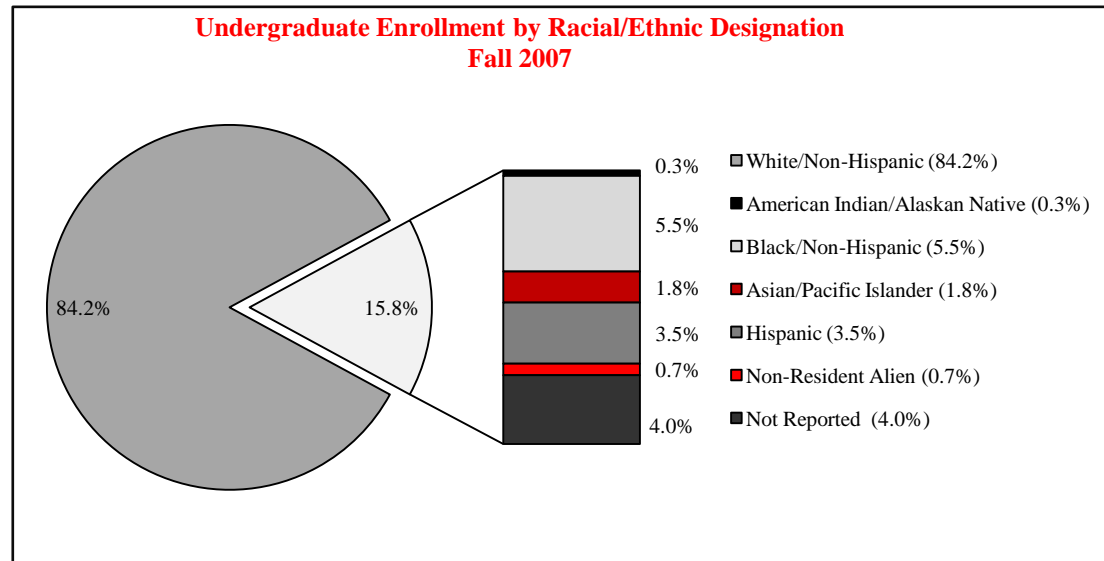
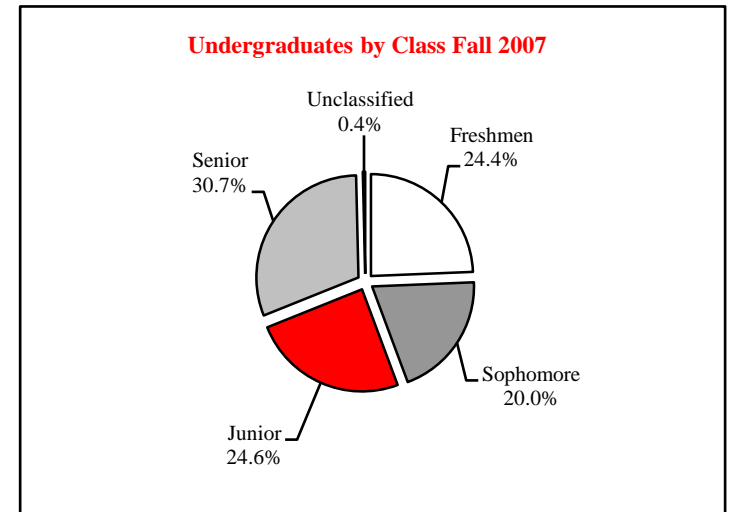


# QUICK GLANCE

<u>Class</u>	<u>Average Age</u>	<u>Headcount</u>	<u>FTE</u> <sup>1</sup>
Freshmen	18.4	4,299	4,131
Sophomore	19.7	3,526	3,411
Junior	21.3	4,344	4,057
Senior	23.4	5,420	4,723
Unclassified	24.9	66	35
<b>Total</b>	<b>20.9</b>	<b>17,655</b>	<b>16,356</b>

<sup>1</sup> Undergraduate Full-time Equivalency (FTE) credit hours divided by 15.

## UNDERGRADUATE STUDENTS ~ FALL 2007



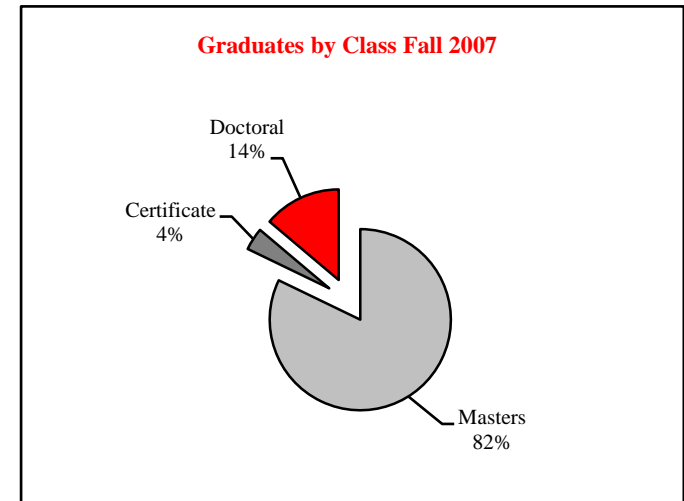
<u>Racial/Ethnic Designation</u>	<u>Headcount</u>
American Indian/Alaskan Native	57
Black/Non-Hispanic	975
Asian/Pacific Islander	320
Hispanic	622
White/Non-Hispanic	14,858
Not Reported	705
Non-Resident Alien	118
<b>Total</b>	<b>17,655</b>



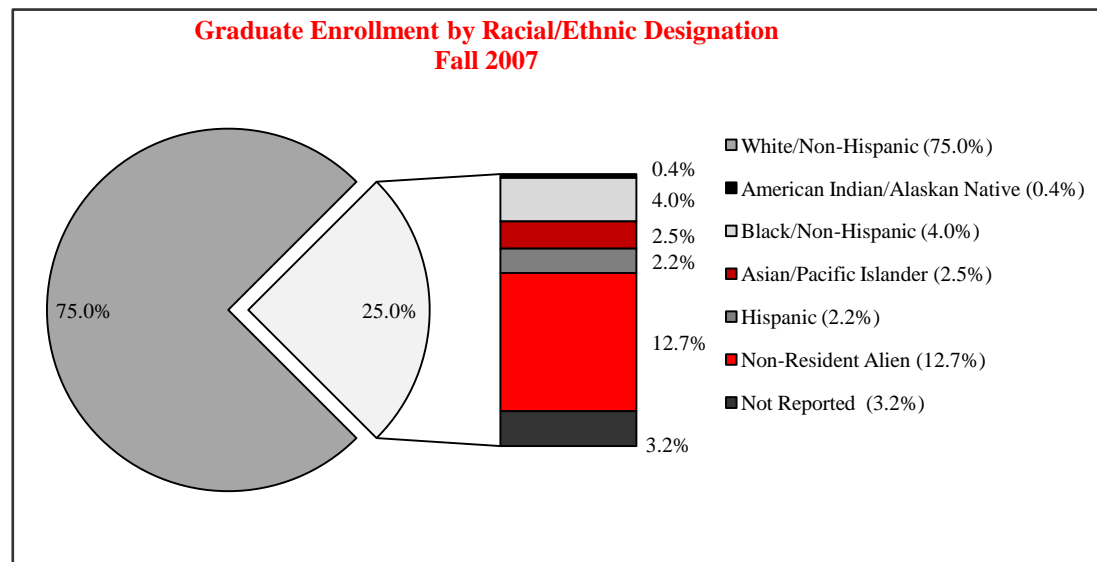
# QUICK GLANCE

## GRADUATE STUDENTS ~ FALL 2007

<u>Class</u>	<u>Average Age</u>	<u>Headcount</u>	<u>FTE</u> <sup>1</sup>
Masters	29.7	2,012	1,546
Certificate	34.7	98	56
Doctoral	37.4	339	219
Total	30.9	2,449	1,821



<sup>1</sup> Graduate Full-time Equivalency (FTE) credit hours divided by 9.



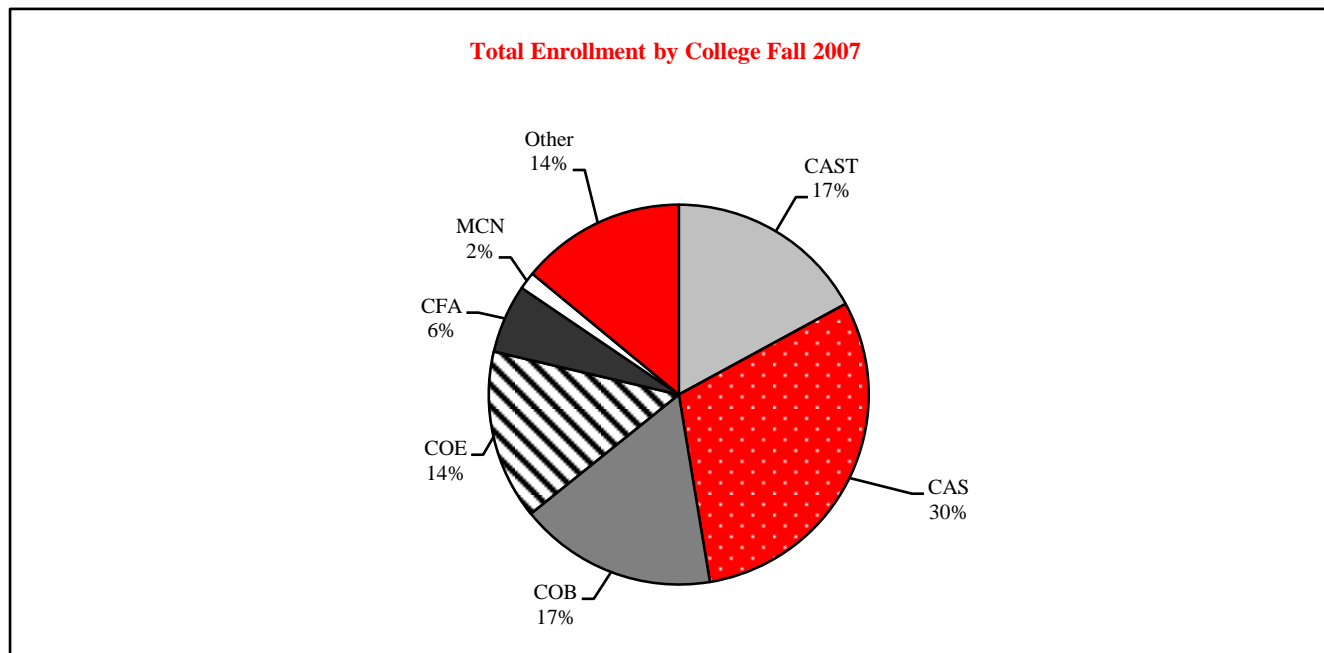
<u>Racial/Ethnic Designation</u>	<u>Headcount</u>
American Indian/Alaskan Native	9
Black/Non-Hispanic	98
Asian/Pacific Islander	61
Hispanic	55
White/Non-Hispanic	1,837
Not Reported	78
Non-Resident Alien	311
Total	2,449



# QUICK GLANCE

## COLLEGE ENROLLMENT BY RACIAL/ETHNIC DESIGNATION ~ Fall 2007

	American Indian/ Alaskan Native	Black/Non- Hispanic	Asian/Pacific Islander	Hispanic	White/Non- Hispanic	Non-Resident Alien	Not Reported	Total
<u>All Students</u>								
Applied Science and Technology	10	180	46	102	2,880	113	101	3,432
Arts and Sciences	20	335	116	225	4,941	185	272	6,094
Business	6	145	87	97	2,867	56	125	3,383
Education	10	88	36	74	2,589	14	91	2,902
Fine Arts	5	46	29	43	953	29	70	1,175
Mennonite College of Nursing	--	8	5	4	270	--	13	300
Other	15	271	62	132	2,195	32	111	2,818
Total	66	1,073	381	677	16,695	429	783	20,104





# QUICK GLANCE

## DEPARTMENTAL FACULTY CHARACTERISTICS ~ FALL 2007

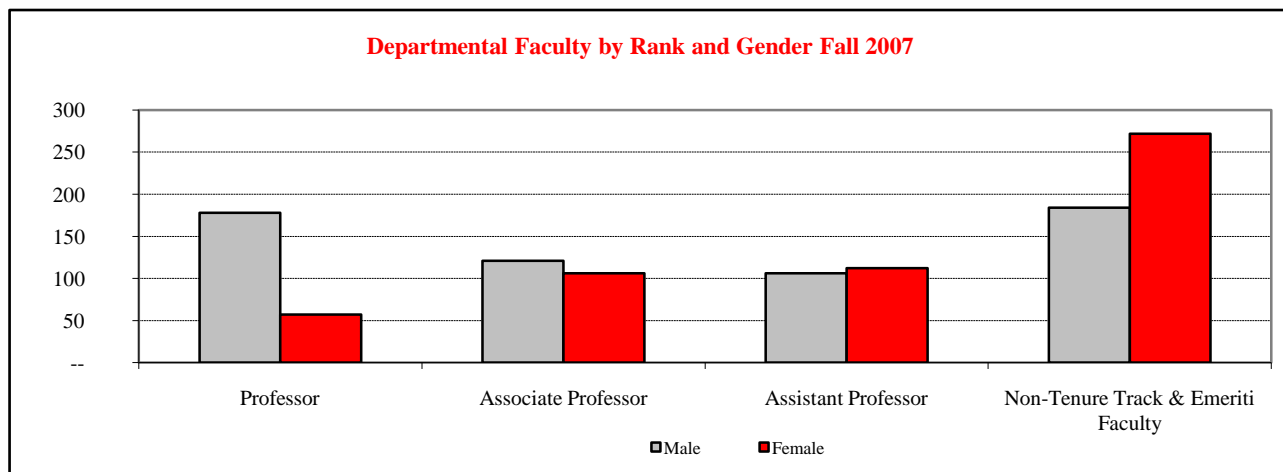
<u>Rank</u>	<u>Gender</u>		
	<u>Male</u>	<u>Female</u>	<u>Total</u>
Professor	178	57	235
Associate Professor	121	106	227
Assistant Professor	106	112	218
Other <sup>1</sup>	184	272	456
Total	589	547	1,136

<u>Rank</u>	<u>Percent Appointment</u>		
	<u>Full-Time</u>	<u>Part-Time</u>	<u>Total</u>
Professor	235	--	235
Associate Professor	227	--	227
Assistant Professor	218	--	218
Other <sup>1</sup>	163	293	456
Total	843	293	1,136

<u>Racial/Ethnic Designation</u>	<u>Number</u>	<u>Percent</u>
American Indian/Alaskan Native	3	0.3
Black/Non-Hispanic	33	2.9
Asian/Pacific Islander	60	5.3
Hispanic	23	2.0
White/Non-Hispanic	994	87.5
Non-Resident Alien	22	1.9
Unknown	1	0.1
Total	1,136	100.0

<u>Years of Service</u>	<u>Tenure Status</u>		
	<u>Track</u>	<u>Non-Tenure</u>	<u>Total</u>
0-3 Years	135	288	423
4-6 Years	131	45	176
7-9 Years	115	65	180
10-14 Years	83	32	115
15-19 Years	85	13	98
20 or More Years	131	13	144
Total	680	456	1,136

<sup>1</sup> Non-Tenure Track & Emeriti Faculty





# QUICK GLANCE

## STRATEGIC PLAN



### **Our Mission**

We at Illinois State University work as a diverse community of scholars with a commitment to fostering a small-college atmosphere with large-university opportunities. We promote the highest academic standards in our teaching, our scholarship, and the connections we build between them. We devote all of our resources and energies to creating the most supportive and productive community possible to serve the citizens of Illinois and beyond.

### **Our Heritage**

The first public university in Illinois, Illinois State University was founded in 1857 as a normal university to prepare the state's teachers. Our institution has a rich heritage as the state's leader in all facets of teacher education – from classroom instruction to educational administration and national policy setting. Illinois State is the only public, doctoral research university in Illinois, offering more than 160 major/minor options in six colleges. The university's early emphasis on teacher preparation is reflected in our values-based commitment to creating an optimal learning environment for all Illinois State students, whether undergraduate or graduate, on campus or off campus.

### **Our Vision & Values**

By acting on our values in every respect, Illinois State University will come to occupy a unique position of strength and visibility among the institutions of higher education in Illinois, nationally, and internationally. Illinois State University will continue to be the first-choice public university in Illinois for high-achieving, motivated students who seek an individualized educational experience combined with the resources of a large university.

**Individualized Attention:** Providing the supportive environment characteristic of a small college through an innovative general education program, strong student-faculty-staff connections, superior student services, and a focus on each student as an individual, with unique educational needs and potential: Illinois State is a campus dedicated to placing the learner at the center of teaching and scholarship.

**Public Opportunity:** Assuring students access to the educational, research, and service opportunities characteristic of a large university, including a wide range of high-quality programs, faculty mentors who are scholars and creative artists of repute in their disciplines, and the support of outstanding facilities, technologies, and library resources.

**Active Pursuit of Learning and Scholarship:** Working with students as partners in their educational development inside and outside of the classroom so that students come to appreciate learning as an active lifelong process; contributing new knowledge through research, creative artistry, and other forms of individual scholarship in which all students, faculty, and staff may participate.

**Diversity:** Encouraging community and an informed respect for differences among students, faculty, and staff by fostering an inclusive environment characterized by ethical behavior and social justice that prepares students to be fully engaged participants in a global society; a diverse faculty, and staff mentoring a diverse student population, enhancing pedagogical, research, and service functions.

**Innovation:** Supporting disciplinary excellence and personal growth of students, faculty, and staff through knowledge development and innovative applications in undergraduate and graduate study, pedagogy, research, creative activities, and public service.



## QUICK GLANCE

## ENDOWED CHAIRS ~ FALL 2007

Endowed chairs are a hallmark of a great university. The tradition of an endowed chair in education dates back to 1502 when the mother of Henry VII established the Lady Margaret Professorship of Divinity at Oxford. More than 200 years later the first endowed chair was established in America, the Hollis Professorship of Divinity created in 1721 at Harvard.

Endowed chairs offer many benefits to the donor, the honored scholar and students. An endowed chair offers Illinois State University the opportunity to offer a more diverse curriculum that is not dependent on usual income sources such as tuition and state funds. Endowed chairs also offer the means to attract, retain and honor distinguished faculty.

The esteemed scholars who are endowed chairs receive recognition for personal achievements in their fields and the satisfaction that the University supports research and teaching in their discipline. Students are challenged and guided by exposure to the highest quality academic leadership.

Donors who generously have endowed chairs know that they are not only ensuring academic excellence in teaching and research today, but that their donation is truly a gift to the future of the University. Endowed chairs are living memorials, perpetuating the donor's name and signifying a permanent commitment to quality education.

Illinois State University has the following Endowed Chairs:

Tom and Janet Andes Endowed Chair for General Education (established 2001), Dr. Kenton Machina (2001-2005) (currently vacant)

K. Patricia Cross Endowed Chair in the Scholarship of Teaching and Learning (established 2001), Dr. Kathleen McKinney (2002-present)

Kara Peters Endowed Chair in Special Education Assistive Technology (established 2002), Dr. Phil Parette (2003-present)

Edmundson-Miller Endowed Chair of Insurance and Risk Management (established 2002), Dr. Richard MacMinn (2002-present)







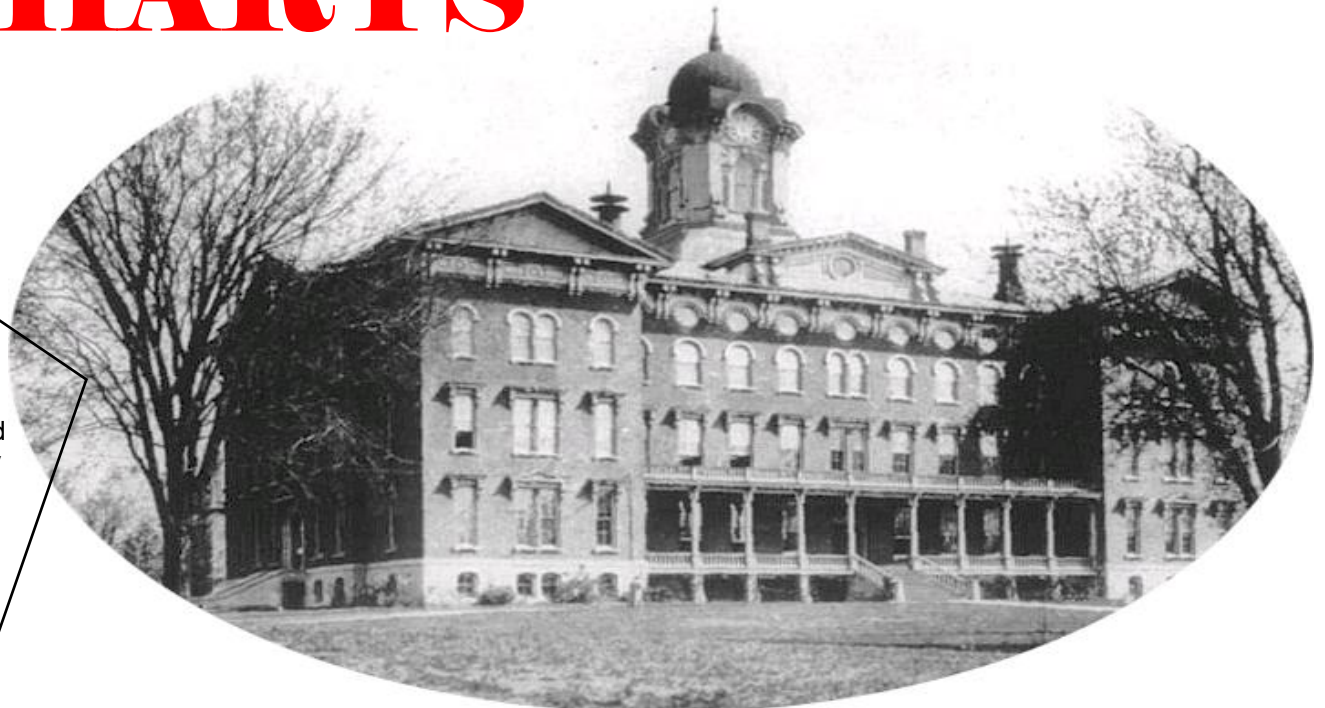
ILLINOIS STATE UNIVERSITY

# ORGANIZATIONAL CHARTS

## DID YOU KNOW?

Old Main, the University's first building, was opened in 1860 and dominated the campus for nearly 100 years.

The first Illinois State University classroom was in Major's Hall in downtown Bloomington.



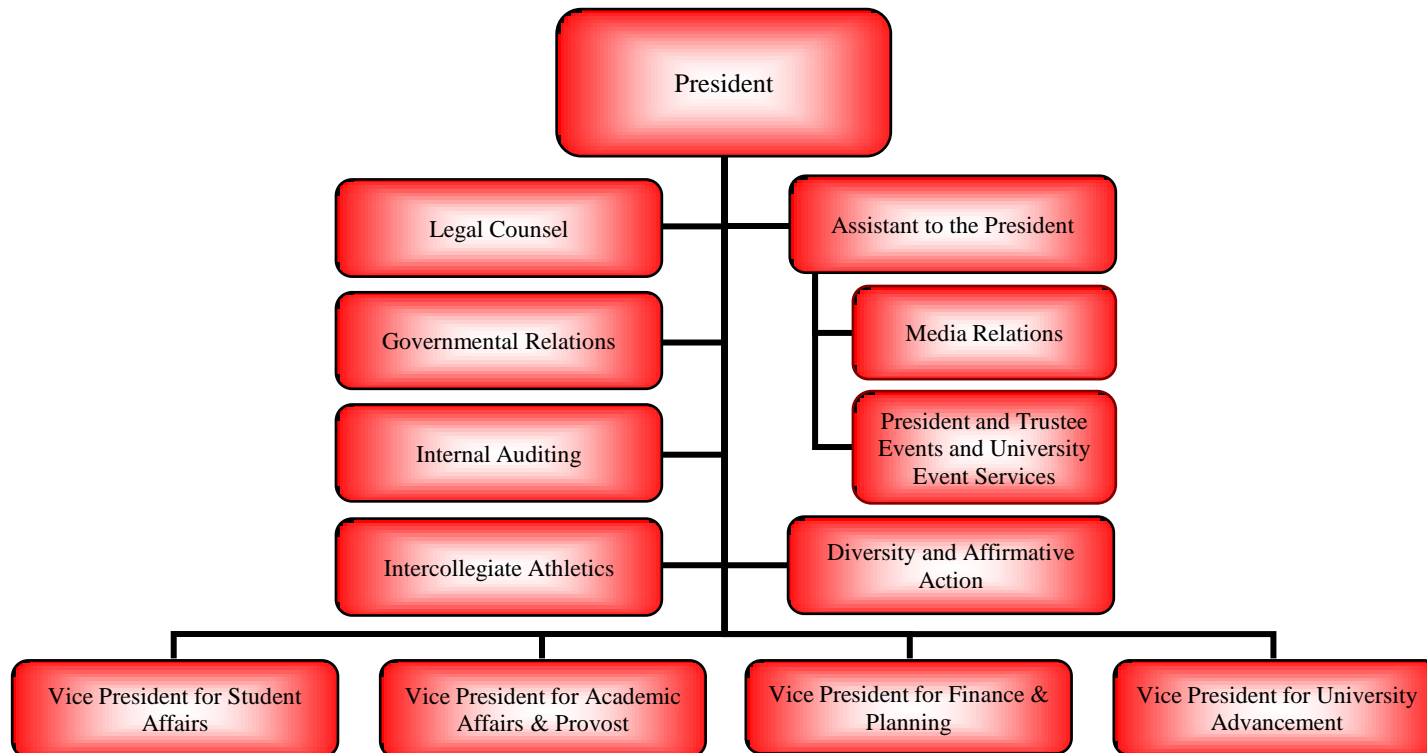
Old Main 1907



# ORGANIZATIONAL CHARTS

PRESIDENT ~ C. ALVIN BOWMAN

C. Alvin Bowman is President of Illinois State University. Dr. Bowman joined Illinois State University in 1978 as a faculty member in Speech Pathology and Audiology. He was appointed Chairperson of Speech Pathology and Audiology in 1994 and served as Interim Provost during the 2002-2003 academic year. Bowman received a bachelor's degree in Speech Pathology from Augustana College in Rock Island, Illinois. He earned a master's degree from Eastern Illinois University and a Ph.D. in Speech and Hearing Science from the University of Illinois-Urbana/Champaign. Dr. Bowman is a member of the Chicago Education Alliance, the American Speech-Language-Hearing Association, and the American Council on Education's Commission on Women in Higher Education. He serves on the board of directors for Chestnut Health Systems, BroMenn Healthcare, and the McLean County Museum of History. He is also a member of the NCAA's Division I-AA/I-AAA Presidential Advisory Group.

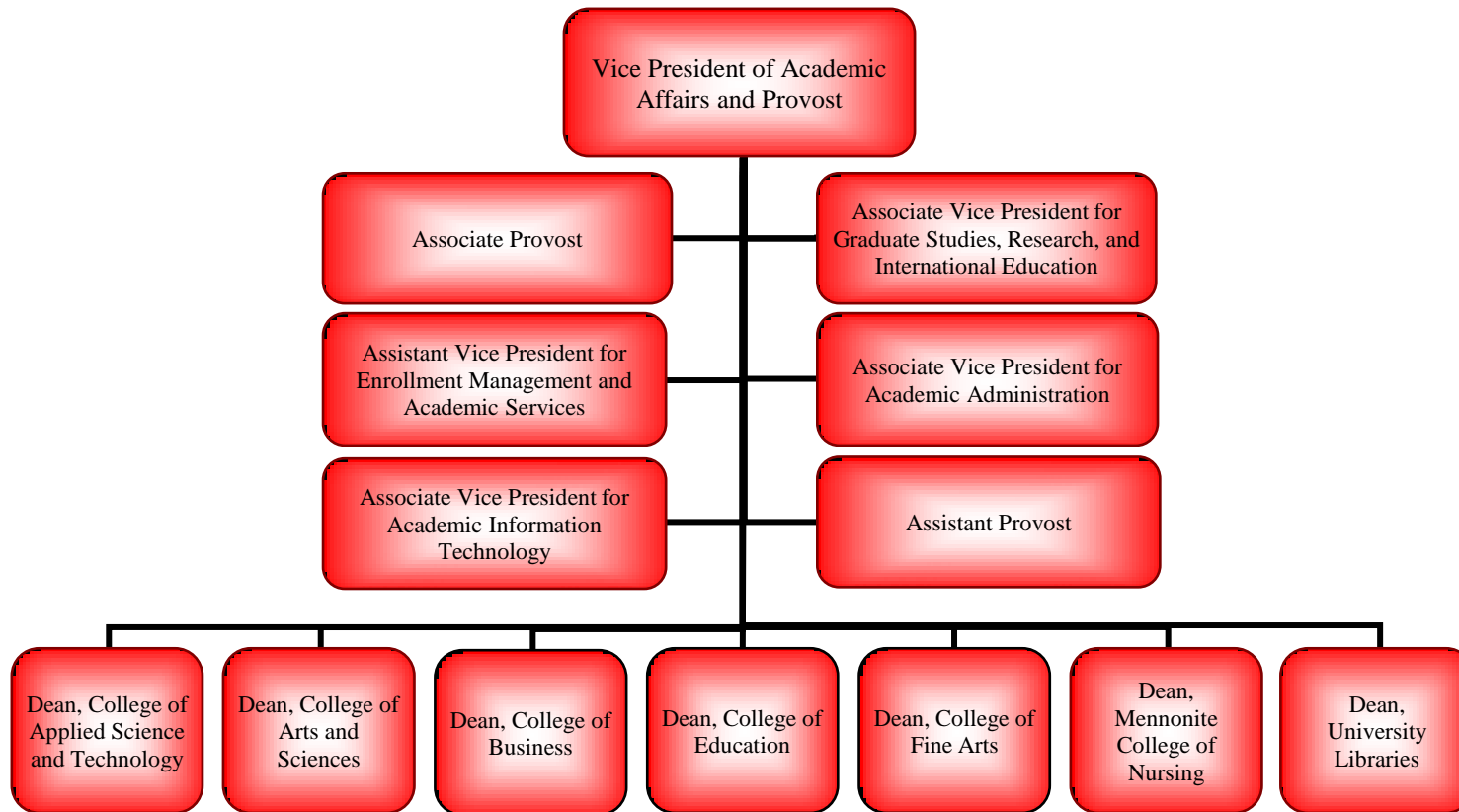




# ORGANIZATIONAL CHARTS

## VP ACADEMIC AFFAIRS & PROVOST ~ JOHN W. PRESLEY

John Woodrow Presley joined Illinois State as Vice President for Academic Affairs and Provost in March 2003. Previously he served as Provost and Vice President of Academic Affairs at the State University of New York-Oswego, Dean of the College of Arts, Science, and Letters at the University of Michigan-Dearborn, and Acting Provost and Dean of the Faculty at Lafayette College. He received his Ph.D. in modern British literature in 1975, his master's degree in English language and literature in 1972 from Southern Illinois University, and his bachelor's degree in English from Arkansas State University in 1970. Dr. Presley also completed post-doctoral work at Johns Hopkins University and at the University of Texas, focusing on the politics of literacy and post-modern literary criticism.

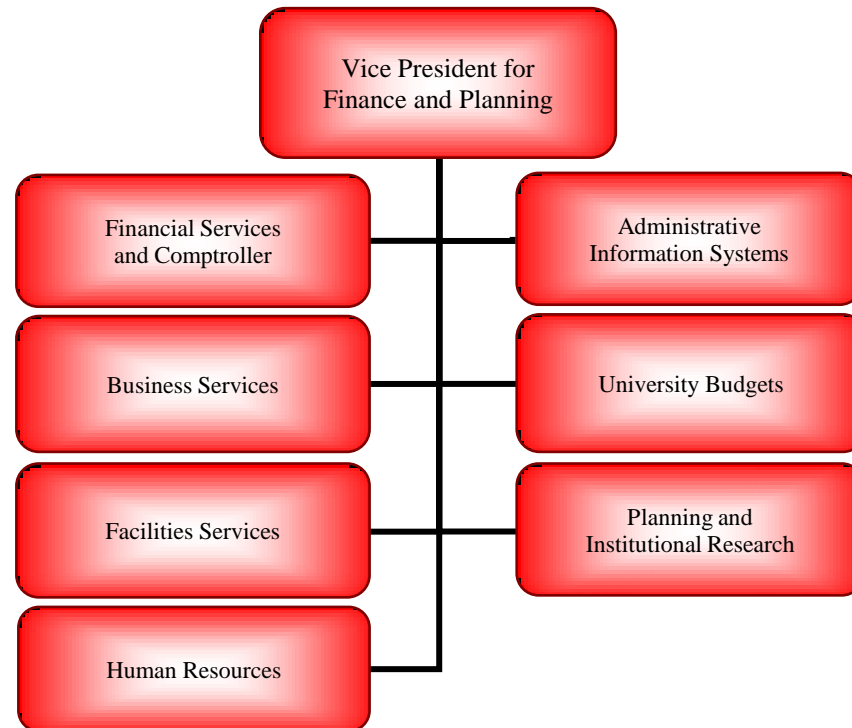




# ORGANIZATIONAL CHARTS

## VP for FINANCE & PLANNING - STEPHEN M. BRAGG

Stephen M. Bragg, Vice President for Finance and Planning, joined Illinois State University in 1994, serving first as Director of Planning, Policy Studies, and Information Systems, and later as Assistant Vice President for Budget and Planning. Prior to joining Illinois State University, Dr. Bragg held staff positions in fiscal affairs, academic affairs, and information systems at the Illinois Board of Higher Education (1981 - 1994). He also was Assistant Director of the Center for the Study of Higher Education at The Pennsylvania State University (1980 - 1981). He has a baccalaureate degree from the University of California at Berkeley and master's and doctorate degrees from The Pennsylvania State University.

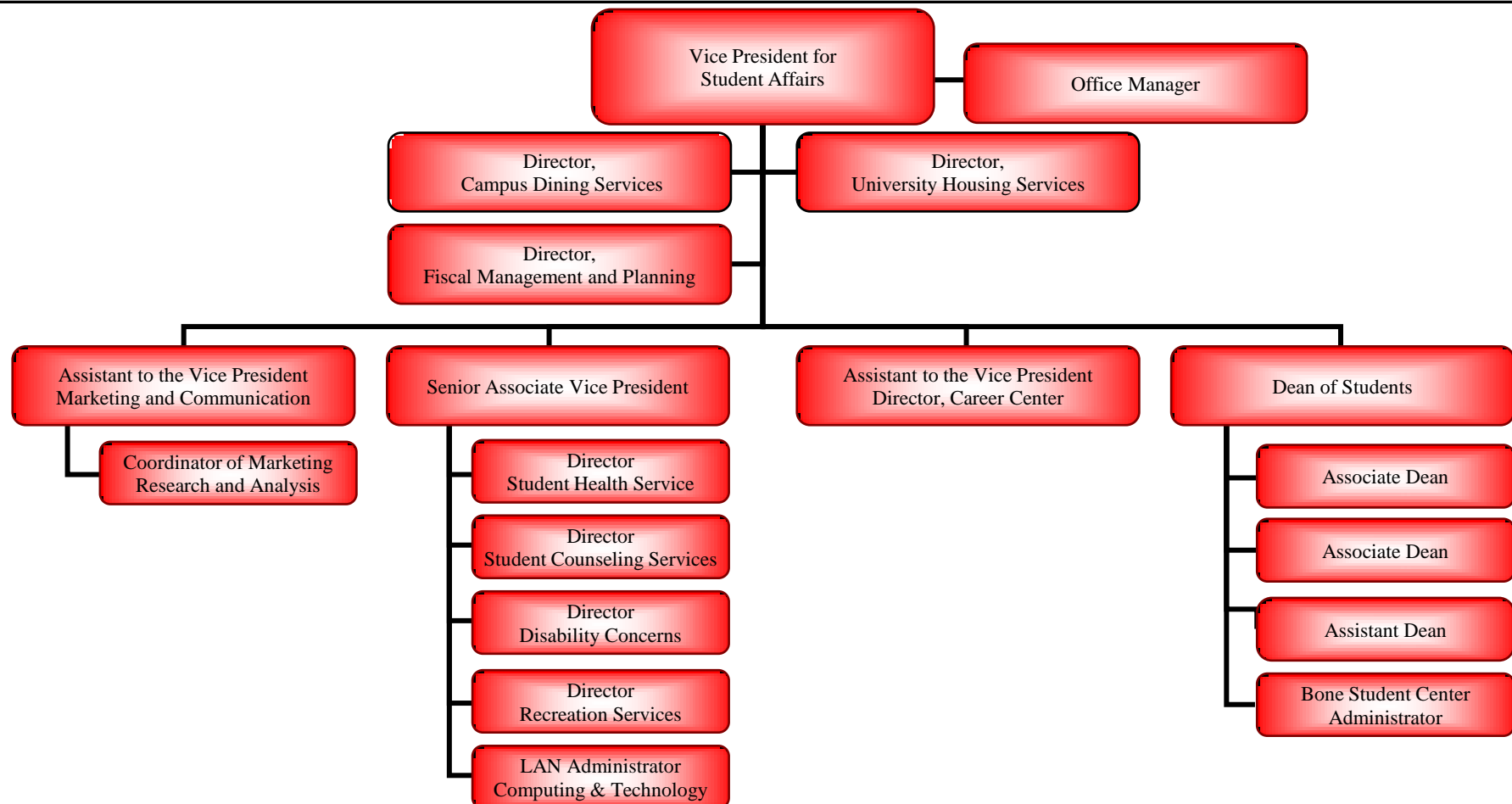




# ORGANIZATIONAL CHARTS

## VP for STUDENT AFFAIRS - STEVEN L. ADAMS

Steve Adams became Vice President for Student Affairs in July, 2006. He has spent his entire 30-year career at Illinois State University, having served in major administrative positions in Academic Affairs prior to his appointment as Student Affairs Vice President. Mr. Adams formerly served as Assistant Vice President for Enrollment Management and Academic Services and as Director of Admissions. He served interim roles as Director of Financial Aid and Director of Enrollment Management. He received the lifetime achievement award from the Illinois Association for College Admission Counseling, the distinguished service award from the Illinois Association for College Admission Counseling, the distinguished service award from the Illinois American College Testing (ACT) Council, and is a member of the Illinois Basketball Hall of Fame and Illinois State University Athletics Hall of Fame as the recipient of the Stretch Miller award. He earned his baccalaureate degree in Business Administration from Illinois Wesleyan University, completed graduate work in Counselor Education at Illinois State University, and was a Fellow in the Education Policy Fellowship Program in Washington, DC.

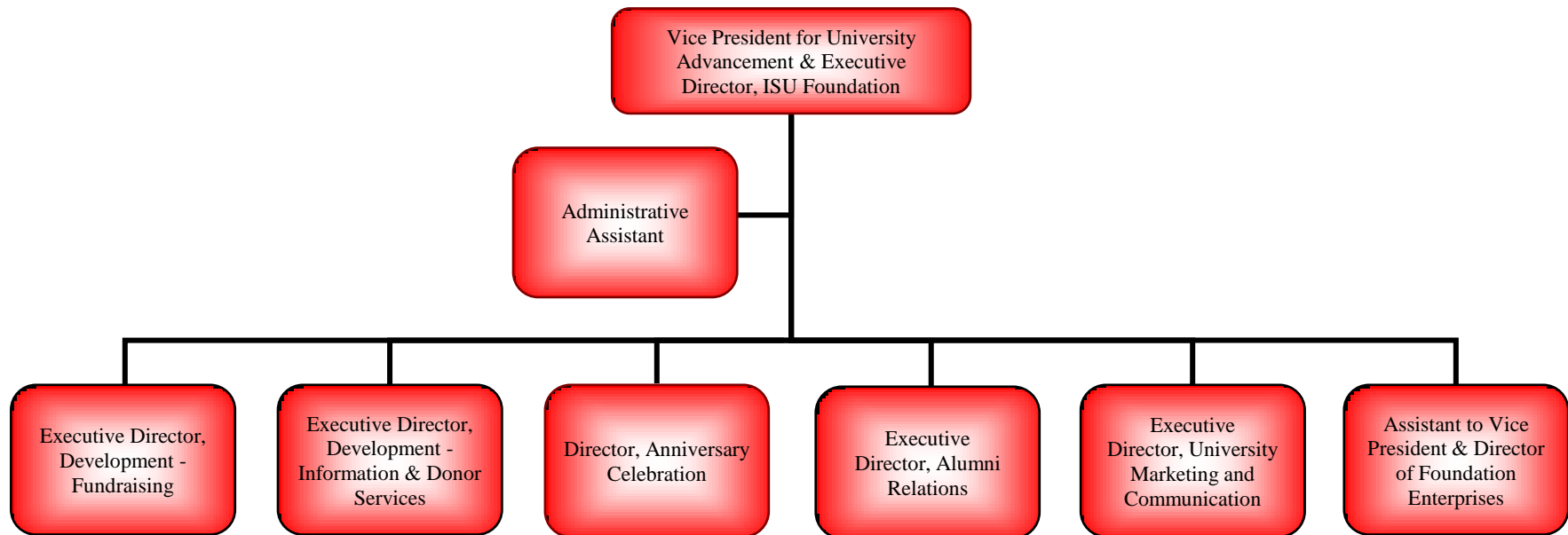




# ORGANIZATIONAL CHARTS

## VP for UNIVERSITY ADVANCEMENT - DIANNE ASHBY

Dianne Ashby became Vice President for University Advancement in July 2005. Most recently, Dr. Ashby served as professor and the Dean of the College of Education at Illinois State University. She has been a school administrator for the Illinois Department of Corrections, staff to the Illinois State Board of Education, principal of University High School (Illinois State University), and chair of the Department of Educational Administration and Foundations at Illinois State. She earned her bachelor's degree in Speech and Theatre Arts from MacMurray College, her master's degree in Educational Administration from the University of Illinois-Springfield (then Sangamon State), and her doctorate in Educational Administration from Southern Illinois University-Carbondale.







ILLINOIS STATE UNIVERSITY

# STUDENTS



## DID YOU KNOW?

Illinois State University enrollment increased from 4,469 in 1960 to 17,549 in 1970.

The number of enrolled students has remained stable since the 1970's, reaching a peak of 22,241 in 1989.

Students gathering in the "four corners" of Old Main (ca 1943).





# STUDENTS ~ NEW

## APPLICATIONS, ACCEPTANCES, & ENROLLMENTS - FALL 2007

<u>Racial/Ethnic Designation</u>	<u>New Beginning Freshmen</u>			<u>New Beginning Freshmen</u>	
	<u>Applications</u>	<u>Acceptances</u>	<u>Enrollments</u>	<u>Yield Rate</u>	<u>Show Rate</u>
American Indian/Alaskan Native	67	40	14	60%	35%
Black/Non-Hispanic	1,656	680	187	41	28
Asian/Pacific Islander	419	283	61	68	22
Hispanic	643	392	127	61	32
White/Non-Hispanic	9,285	6,762	2,652	73	39
Not Reported	441	286	101	65	35
Non-Resident Alien	39	18	3	46	17
Total	12,550	8,461	3,145	67	37

<u>Racial/Ethnic Designation</u>	<u>New Undergraduate Transfer Students (excludes Unclassified)</u>			<u>New Undergraduate Transfer Students (excludes Unclassified)</u>	
	<u>Applications</u>	<u>Acceptances</u>	<u>Enrollments</u>	<u>Yield Rate</u>	<u>Show Rate</u>
American Indian/Alaskan Native	19	17	9	89%	53%
Black/Non-Hispanic	155	98	47	63	48
Asian/Pacific Islander	96	72	22	75	31
Hispanic	158	123	65	78	53
White/Non-Hispanic	3,025	2,553	1,494	84	59
Not Reported	160	135	80	84	59
Non-Resident Alien	36	22	8	61	36
Total	3,649	3,020	1,725	83	57

<u>Racial/Ethnic Designation</u>	<u>New Graduate Students</u>			<u>New Graduate Students</u>	
	<u>Applications</u>	<u>Acceptances</u>	<u>Enrollments</u>	<u>Yield Rate</u>	<u>Show Rate</u>
American Indian/Alaskan Native	5	3	3	60%	100%
Black/Non-Hispanic	67	39	22	58	56
Asian/Pacific Islander	48	31	17	65	55
Hispanic	47	28	18	60	64
White/Non-Hispanic	1,043	682	425	65	62
Not Reported	68	49	32	72	65
Non-Resident Alien	453	184	76	41	41
Total	1,731	1,016	593	59	58



# STUDENTS ~ NEW

# NEW BEGINNING FRESHMEN ~ FALL 2007

<u>ACT Composite</u>	<u>Number</u>	<u>Percent</u>	<u>Cumulative</u>
30-36	133	4.2	4.2
26-29	748	23.8	28.0
23-25	1,374	43.7	71.7
20-22	754	24.0	95.7
18-19	110	3.5	99.2
16-17	9	0.3	99.5
1-15	4	0.1	99.6
Not Reported	13	0.4	100.0

<u>Top Illinois Counties</u>	<u>Number</u>
Cook	1,044
DuPage	409
Will	258
Lake	220
McLean	136
Kane	134
McHenry	127
Sangamon	68
Champaign	64
Winnebago	58
Kankakee	38
Tazewell	37
Peoria	35

<u>High School Percentile</u>	<u>Number</u>	<u>Percent</u>
Top 10%	358	11.4
Top Quartile (includes top 10%)	1,154	36.7
Second Quartile	1,262	40.1

## High School Percentile Rank

<u>Fall Term</u>	<u>ACT Interquartile</u>	<u>ACT Score</u>	<u>99-75</u>	<u>74-50</u>	<u>49-25</u>	<u>24-1</u>	<u>Not Reported</u>	<u>Total</u>
2007	22-26	30-36	86	27	5	--	15	133
2006	22-26	26-29	315	249	81	6	97	748
2005	22-26	23-25	478	537	206	9	144	1,374
2004	22-26	20-22	225	393	73	3	60	754
2003	21-26	18-19	42	48	11	2	7	110
		16-17	5	2	1	1	--	9
		1-15	--	--	1	3	--	4
		Not Reported	3	6	--	--	4	13
		Total	1,154	1,262	378	24	327	3,145

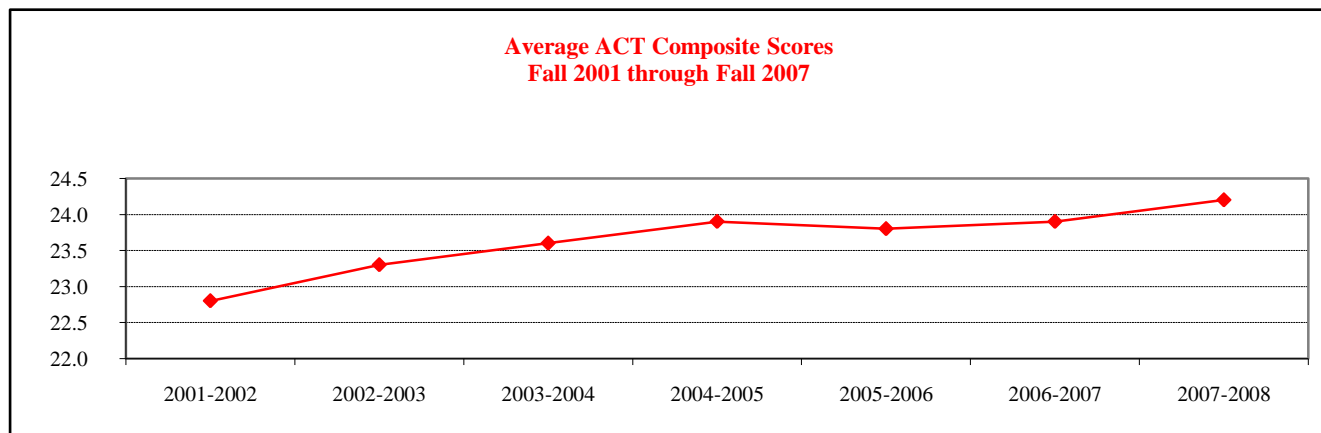
*Educating Illinois* ACT Interquartile (mid 50%) goal is 22-27.



# STUDENTS ~ NEW AMERICAN COLLEGE TESTING (ACT) SCORES ~ FALL 2001 through FALL 2007

<u>Subscores and Composite</u>	<u>2001-2002</u>	<u>2002-2003</u>	<u>2003-2004</u>	<u>2004-2005</u>	<u>2005-2006</u>	<u>2006-2007</u>	<u>2007-2008</u>
English	22.4	23.1	23.4	23.7	23.8	24.1	24.2
Math	22.5	23.0	23.1	23.5	23.4	23.5	23.7
Reading	23.2	23.9	23.9	24.5	24.1	24.4	24.6
Science	22.7	22.8	23.2	23.1	23.2	23.1	23.5
Composite	22.8	23.3	23.6	23.9	23.8	23.9	24.2

<u>Composite Scores By College</u>	<u>2001-2002</u>	<u>2002-2003</u>	<u>2003-2004</u>	<u>2004-2005</u>	<u>2005-2006</u>	<u>2006-2007</u>	<u>2007-2008</u>
Applied Science & Technology	22.9	23.3	23.6	23.5	23.5	23.6	24.0
Arts & Sciences	23.9	24.3	24.6	24.9	24.8	24.9	24.8
Business	22.6	23.3	23.7	23.7	23.9	24.0	24.0
Education	22.4	23.0	23.8	23.8	24.1	24.0	24.3
Fine Arts	23.9	24.2	24.3	24.9	24.5	25.2	24.5
Mennonite College of Nursing	22.0	22.4	22.7	24.0	24.2	26.2	26.7
Other Majors	22.0	22.4	22.1	22.5	22.2	22.6	23.1
Total	22.8	23.3	23.6	23.9	23.8	23.9	24.2





# STUDENTS ~ NEW

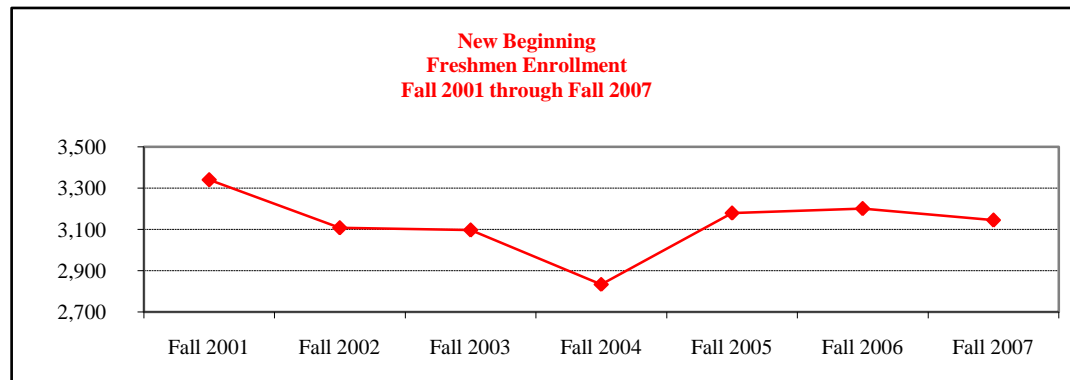
# NEW BEGINNING FRESHMEN ~ FALL 2001 through FALL 2007

	Average ACT Composite Scores						Percent Graduating from High School Class		
	All Students <sup>1</sup>			Core Curriculum <sup>1</sup>			Top 10%	Top <sup>2</sup> Quartile	Second Quartile
	Illinois State University	Illinois	National	Illinois	National				
Fall 2003	23.6	20.2	20.8	22.4	21.8	Fall 2003	11.0	40.1	42.2
Fall 2004	23.9	20.3	20.9	22.4	21.9	Fall 2004	10.8	38.0	43.1
Fall 2005	23.8	20.3	20.9	22.5	21.9	Fall 2005	11.0	36.3	42.8
Fall 2006	23.9	20.5	21.1	22.4	21.9	Fall 2006	11.3	37.0	41.1
Fall 2007	24.2	20.5	21.2	22.5	22.0	Fall 2007	11.4	36.7	40.1

<sup>1</sup> Core curriculum is 4 years English; 3 years each Math, Social Sciences, & Natural Science.

<sup>2</sup> Top Quartile includes the top 10%.

Racial/Ethnic Designation	Enrollment						
	Fall 2001	Fall 2002	Fall 2003	Fall 2004	Fall 2005	Fall 2006	Fall 2007
American Indian/Alaskan Native	6	5	11	13	5	14	14
Black/Non-Hispanic	217	175	248	219	232	212	187
Asian/Pacific Islander	52	40	52	55	62	58	61
Hispanic	96	97	126	97	131	126	127
White/Non-Hispanic	2,951	2,770	2,645	2,297	2,548	2,690	2,652
Not Reported	--	--	--	134	192	92	101
Non-Resident Alien	18	21	15	19	9	8	3
Total	3,340	3,108	3,097	2,834	3,179	3,200	3,145



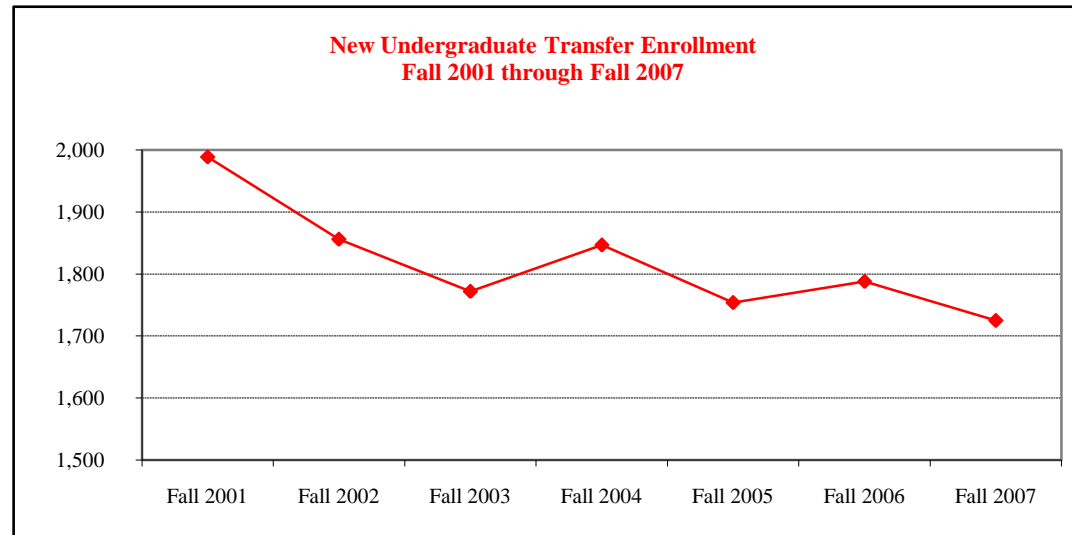


# STUDENTS ~ NEW

## NEW UNDERGRADUATE TRANSFERS ~ FALL 2001 through FALL 2007

<u>Racial/Ethnic Designation</u>	<u>Fall 2001</u>	<u>Fall 2002</u>	<u>Fall 2003</u>	<u>Fall 2004</u>	<u>Fall 2005</u>	<u>Fall 2006</u>	<u>Fall 2007</u>
American Indian/Alaskan Native	4	2	4	4	3	5	9
Black/Non-Hispanic	80	71	65	99	79	68	47
Asian/Pacific Islander	15	15	18	35	27	26	22
Hispanic	54	46	50	52	45	61	65
White/Non-Hispanic	1,816	1,699	1,616	1,508	1,467	1,561	1,494
Not Reported	--	--	--	131	110	54	80
Non-Resident Alien	20	23	19	18	23	13	8
Total	1,989	1,856	1,772	1,847	1,754	1,788	1,725

<u>Transfer Institution Type</u>	<u>Fall 2001</u>	<u>Fall 2002</u>	<u>Fall 2003</u>	<u>Fall 2004</u>	<u>Fall 2005</u>	<u>Fall 2006</u>	<u>Fall 2007</u>
Community Colleges	1,614	1,536	1,379	1,414	1,377	1,403	1,337
4-Year Colleges	367	314	366	427	366	385	388

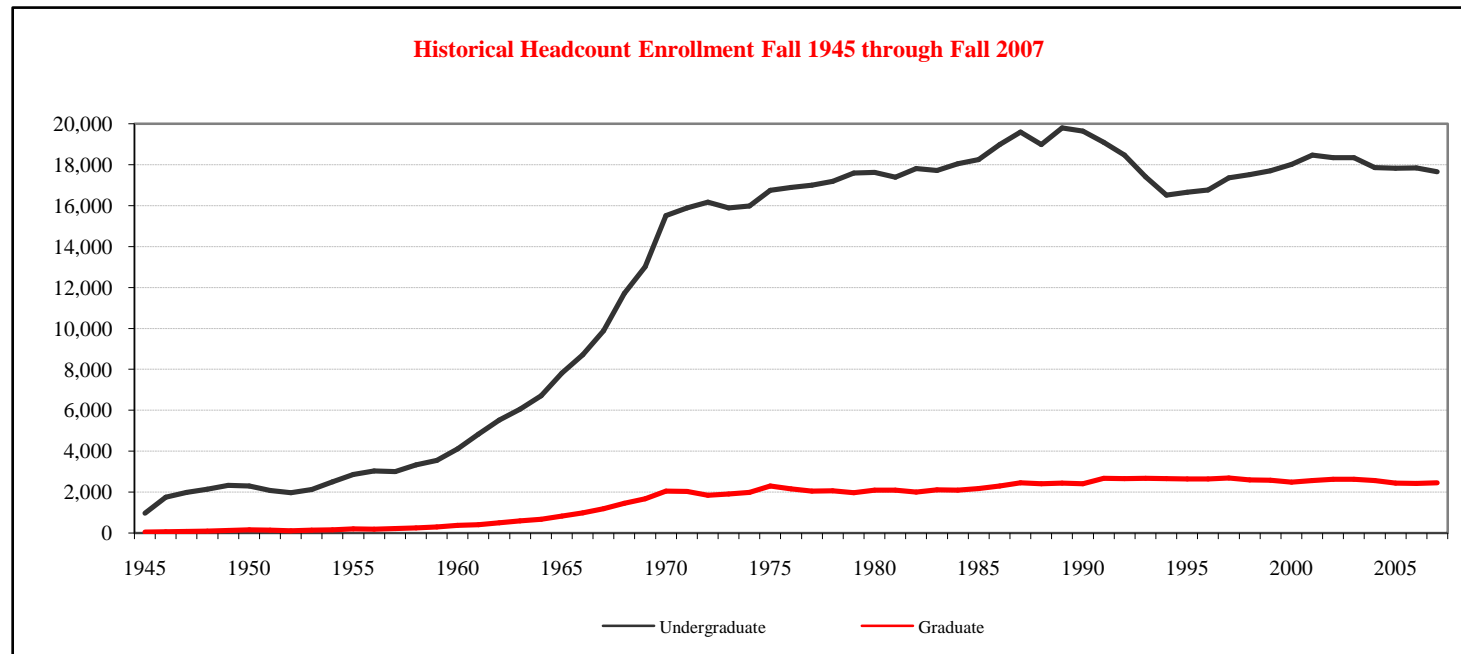




# STUDENT ~ ENROLLMENT

## GENDER, LEVEL, & HOURS ~ FALL 2001 through FALL 2007

	Fall 2001		Fall 2002		Fall 2003		Fall 2004		Fall 2005		Fall 2006		Fall 2007	
	Male	Female	Male	Female	Male	Female	Male	Female	Male	Female	Male	Female	Male	Female
<b>Undergraduate</b>														
12 or more hours	6,995	10,037	7,060	9,918	7,080	9,731	7,062	9,552	7,021	9,614	7,166	9,528	7,164	9,435
Less than 12 hours	697	743	655	719	606	680	589	663	560	632	524	624	503	553
Sub Total	7,692	10,780	7,715	10,637	7,686	10,411	7,651	10,215	7,581	10,246	7,690	10,152	7,667	9,988
<b>Graduate</b>														
9 or more hours	408	619	404	690	425	718	454	691	464	672	443	678	450	666
Less than 9 hours	530	1,006	553	976	497	968	482	926	432	870	418	880	418	915
Sub Total	938	1,625	957	1,666	922	1,686	936	1,617	896	1,542	861	1,558	868	1,581
<b>Total</b>	8,630	12,405	8,672	12,303	8,608	12,097	8,587	11,832	8,477	11,788	8,551	11,710	8,535	11,569





# STUDENT ~ ENROLLMENT COLLEGE, RACIAL/ETHNIC DESIGNATION & LEVEL ~ FALL 2007

	<u>American Indian/ Alaskan Native</u>	<u>Black/Non- Hispanic</u>	<u>Asian/Pacific Islander</u>	<u>Hispanic</u>	<u>White/Non- Hispanic</u>	<u>Non-Resident Aliens</u>	<u>Not Reported</u>	<u>Total</u>
<u>Undergraduate</u>								
Applied Science and Technology	8	171	32	98	2,682	17	95	3,103
Arts and Sciences	14	297	98	198	4,301	47	236	5,191
Business	6	143	76	93	2,717	18	122	3,175
Education	9	55	32	67	2,087	3	82	2,335
Fine Arts	5	42	23	39	868	6	61	1,044
Mennonite College of Nursing	--	8	4	4	241	--	10	267
Other	15	259	55	123	1,962	27	99	2,540
Total	57	975	320	622	14,858	118	705	17,655

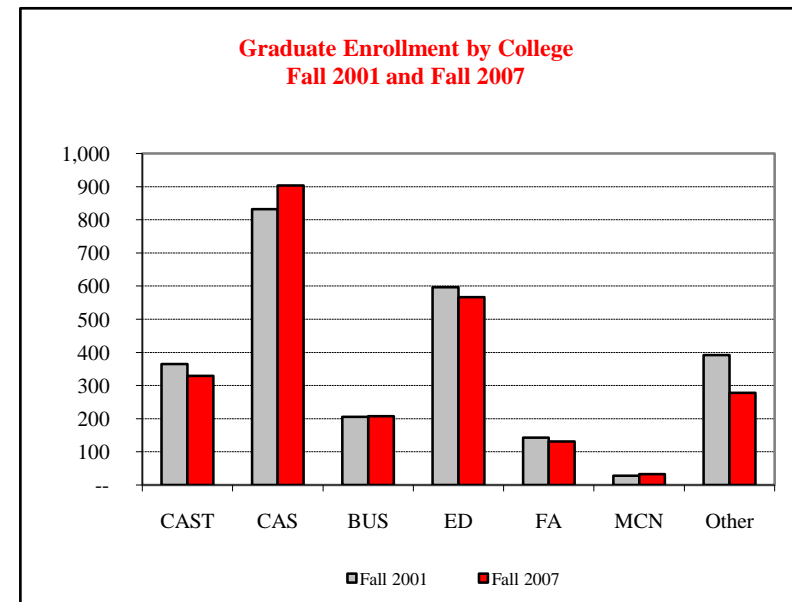
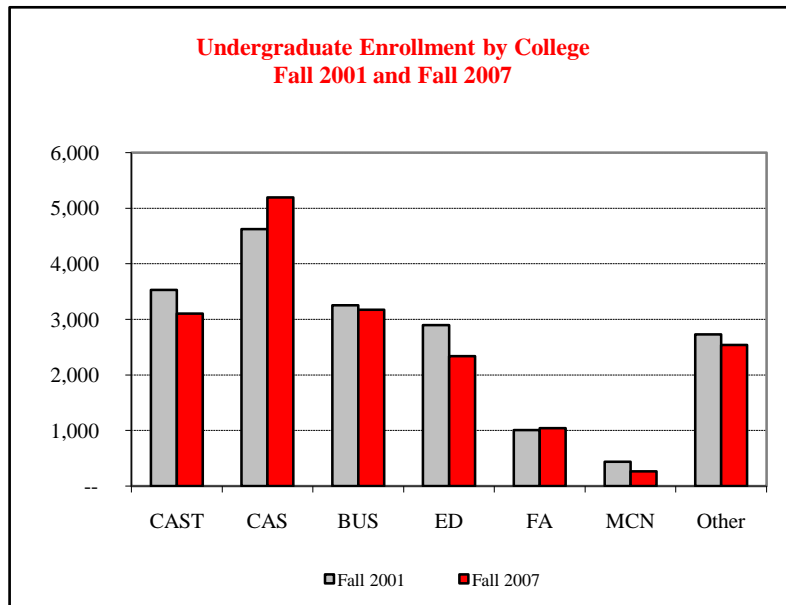
	<u>American Indian/ Alaskan Native</u>	<u>Black/Non- Hispanic</u>	<u>Asian/Pacific Islander</u>	<u>Hispanic</u>	<u>White/Non- Hispanic</u>	<u>Non-Resident Aliens</u>	<u>Not Reported</u>	<u>Total</u>
<u>Graduate</u>								
Applied Science and Technology	2	9	14	4	198	96	6	329
Arts and Sciences	6	38	18	27	640	138	36	903
Business	--	2	11	4	150	38	3	208
Education	1	33	4	7	502	11	9	567
Fine Arts	--	4	6	4	85	23	9	131
Mennonite College of Nursing	--	--	1	--	29	--	3	33
Other	--	12	7	9	233	5	12	278
Total	9	98	61	55	1,837	311	78	2,449



# STUDENT ~ ENROLLMENT

## COLLEGE & LEVEL ~ FALL 2001 and Fall 2007

	Fall 2001			Fall 2007			Percent Change		
	Undergraduate	Graduate	Total	Undergraduate	Graduate	Total	Undergraduate	Graduate	Total
Applied Science and Technology	3,527	365	3,892	3,103	329	3,432	(12.0)	(9.9)	(11.8)
Arts and Sciences	4,621	832	5,453	5,191	903	6,094	12.3	8.5	11.8
Business	3,255	206	3,461	3,175	208	3,383	(2.5)	1.0	(2.3)
Education	2,896	597	3,493	2,335	567	2,902	(19.4)	(5.0)	(16.9)
Fine Arts	1,005	143	1,148	1,044	131	1,175	3.9	(8.4)	2.4
Menonite College of Nursing	438	28	466	267	33	300	(39.0)	17.9	(35.6)
Other	2,730	392	3,122	2,540	278	2,818	(7.0)	(29.1)	(9.7)
Total	18,472	2,563	21,035	17,655	2,449	20,104	(4.4)	(4.4)	(4.4)



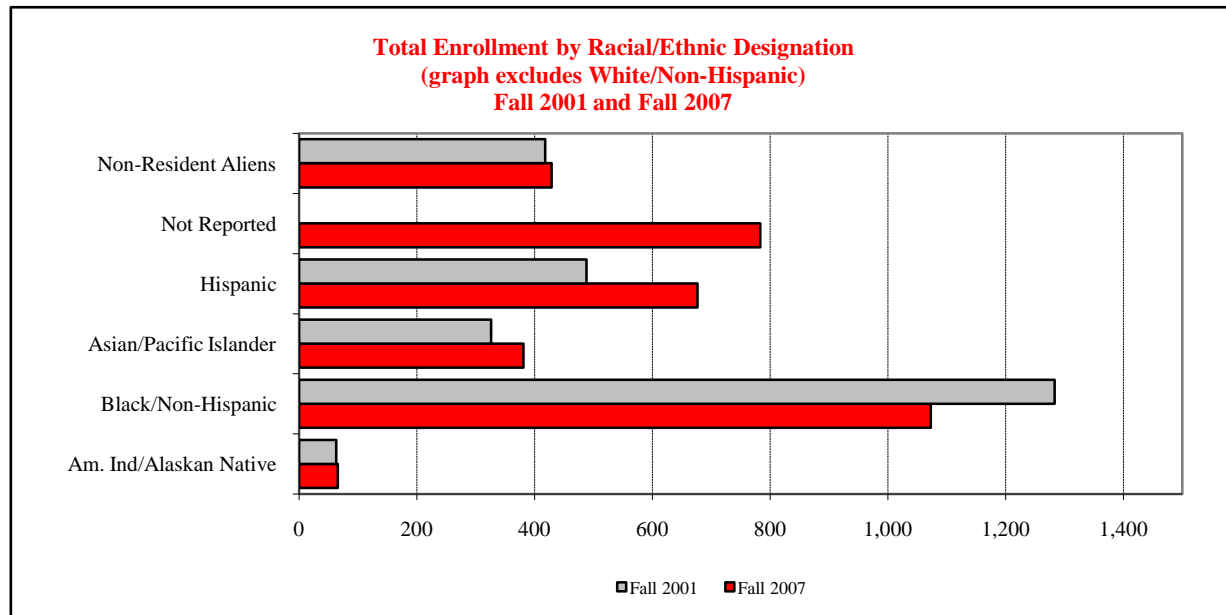




# STUDENT ~ ENROLLMENT

## RACIAL/ETHNIC & LEVEL ~ FALL 2001 and FALL 2007

Racial/Ethnic Designation	Fall 2001			Fall 2007			Percent Change		
	Undergraduate	Graduate	Total	Undergraduate	Graduate	Total	Undergraduate	Graduate	Total
American Indian/Alaskan Native	53	10	63	57	9	66	7.5	(10.0)	4.8
Black/Non-Hispanic	1,149	134	1,283	975	98	1,073	(15.1)	(26.9)	(16.4)
Asian/Pacific Islander	286	40	326	320	61	381	11.9	52.5	16.9
Hispanic	448	40	488	622	55	677	38.8	37.5	38.7
White/Non-Hispanic	16,392	2,065	18,457	14,858	1,837	16,695	(9.4)	(11.0)	(9.5)
Not Reported	--	--	--	705	78	783	--	--	--
Non-Resident Aliens	144	274	418	118	311	429	(18.1)	13.5	2.6
<b>Total</b>	<b>18,472</b>	<b>2,563</b>	<b>21,035</b>	<b>17,655</b>	<b>2,449</b>	<b>20,104</b>	<b>(4.4)</b>	<b>(4.4)</b>	<b>(4.4)</b>





# STUDENT ~ ENROLLMENT

CLASS AND AGE ~ FALL 2007

<u>Age as of</u> <u>September 1, 2007</u>	<u>Undergraduate</u>						<u>Graduate</u>				<u>Grand</u> <u>Total</u>
	<u>Freshmen</u>	<u>Sophomore</u>	<u>Junior</u>	<u>Senior</u>	<u>Unclassified</u>	<u>Total</u>	<u>Masters</u>	<u>Certificate</u>	<u>Doctoral</u>	<u>Total</u>	
Under 18	58	1	--	--	16	75	--	--	--	--	75
18 - 19	4,092	1,941	77	4	5	6,119	--	--	--	--	6,119
20 - 21	95	1,442	3,419	2,071	9	7,036	25	2	--	27	7,063
22 - 24	38	90	560	2,421	11	3,120	679	22	23	724	3,844
25 - 29	10	32	169	518	13	742	632	13	59	704	1,446
30 - 39	4	18	89	261	7	379	381	28	144	553	932
40 - 49	2	2	22	114	2	142	205	23	54	282	424
50 - 59	--	--	7	28	3	38	77	10	51	138	176
60 or over	--	--	1	3	--	4	13	--	8	21	25
<b>Total</b>	<b>4,299</b>	<b>3,526</b>	<b>4,344</b>	<b>5,420</b>	<b>66</b>	<b>17,655</b>	<b>2,012</b>	<b>98</b>	<b>339</b>	<b>2,449</b>	<b>20,104</b>

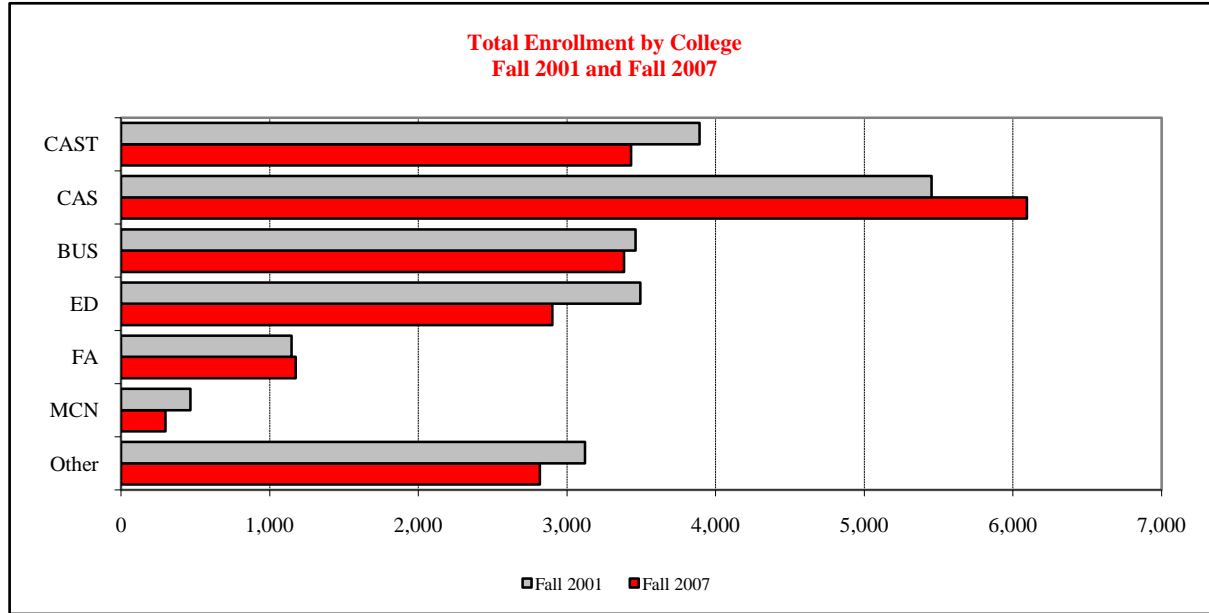




# STUDENT ~ ENROLLMENT

## TOTAL COLLEGE AND GENDER ~ FALL 2001 and FALL 2007

College	Fall 2001			Fall 2007			Percent Change		
	Male	Female	Total	Male	Female	Total	Male	Female	Total
Applied Science and Technology	2,274	1,618	3,892	1,951	1,481	3,432	(14.2)	(8.5)	(11.8)
Arts and Sciences	2,162	3,291	5,453	2,529	3,565	6,094	17.0	8.3	11.8
Business	1,915	1,546	3,461	2,041	1,342	3,383	6.6	(13.2)	(2.3)
Education	384	3,109	3,493	317	2,585	2,902	(17.4)	(16.9)	(16.9)
Fine Arts	492	656	1,148	483	692	1,175	(1.8)	5.5	2.4
Mennonite College of Nursing	21	445	466	18	282	300	(14.3)	(36.6)	(35.6)
Other	1,382	1,740	3,122	1,196	1,622	2,818	(13.5)	(6.8)	(9.7)
<b>Total</b>	<b>8,630</b>	<b>12,405</b>	<b>21,035</b>	<b>8,535</b>	<b>11,569</b>	<b>20,104</b>	<b>(1.1)</b>	<b>(6.7)</b>	<b>(4.4)</b>

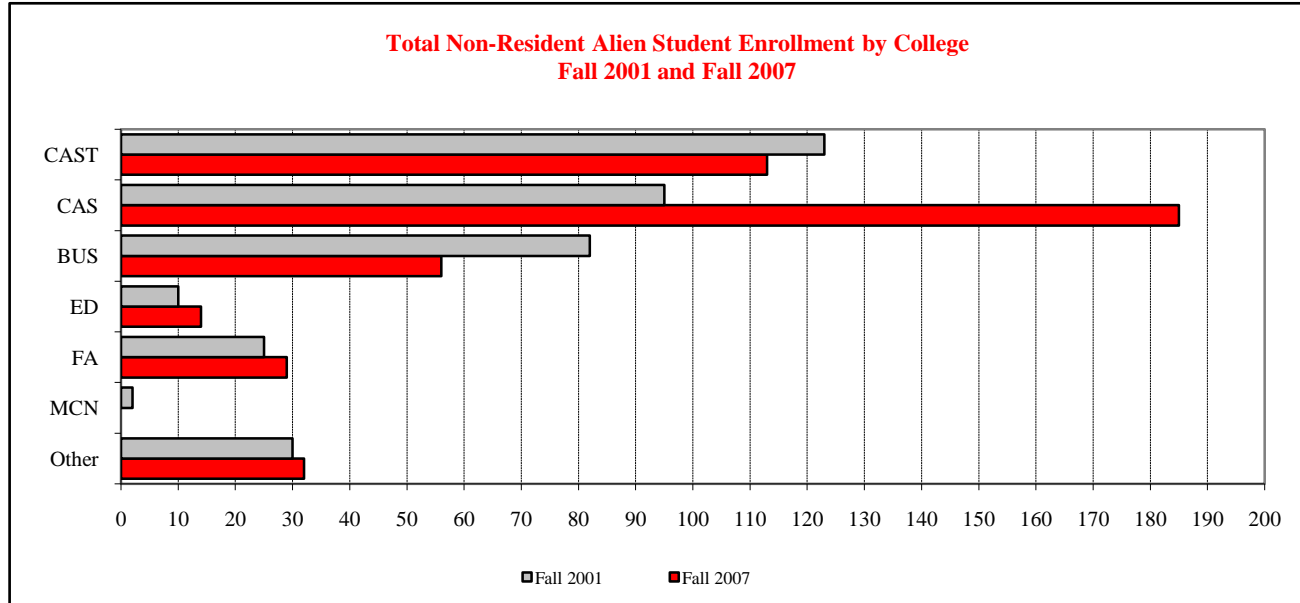




# STUDENT ~ ENROLLMENT

## NON-RESIDENT ALIEN STUDENTS ~ FALL 2001 & FALL 2007

	Fall 2001			Fall 2007			Percent Change		
	Undergraduate	Graduate	Total	Undergraduate	Graduate	Total	Undergraduate	Graduate	Total
Applied Science and Technology	33	90	123	17	96	113	(48.5)	6.7	(8.1)
Arts and Sciences	28	67	95	47	138	185	67.9	106.0	94.7
Business	48	34	82	18	38	56	(62.5)	11.8	(31.7)
Education	1	9	10	3	11	14	200.0	22.2	40.0
Fine Arts	5	20	25	6	23	29	20.0	15.0	16.0
Mennonite College of Nursing	2	--	2	--	--	--	(100.0)	--	(100.0)
Other	27	3	30	27	5	32	--	66.7	6.7
<b>Total</b>	<b>144</b>	<b>223</b>	<b>367</b>	<b>118</b>	<b>311</b>	<b>429</b>	<b>(18.1)</b>	<b>39.5</b>	<b>16.9</b>



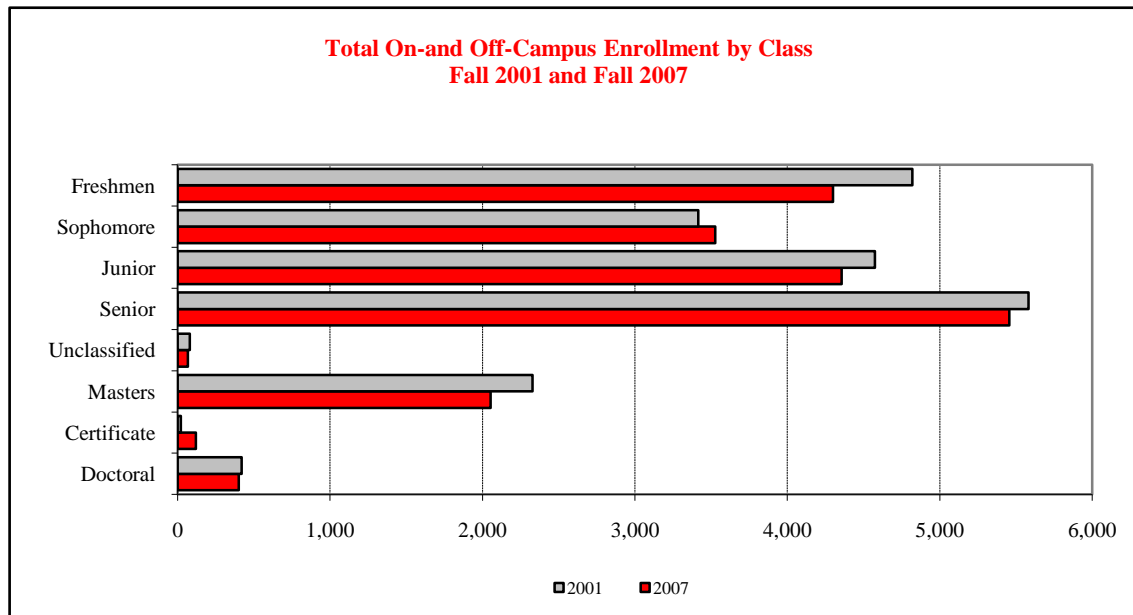


# STUDENT ~ ENROLLMENT

## ON- AND OFF-CAMPUS & CLASS ~ FALL 2001 and FALL 2007

	Fall 2001				Fall 2007				Percent Change			
	On-Campus	Off-Campus	Total	FTE <sup>1</sup>	On-Campus	Off-Campus	Total	FTE <sup>1</sup>	On-Campus	Off-Campus	Total	FTE <sup>1</sup>
Freshmen	4,821	--	4,821	4,552	4,299	--	4,299	4,131	(10.8)	--	(10.8)	(9.3)
Sophomore	3,415	--	3,415	3,223	3,526	--	3,526	3,411	3.3	--	3.3	5.8
Junior	4,574	--	4,574	4,147	4,344	12	4,356	4,066	(5.0)	--	(4.8)	(2.0)
Senior	5,583	--	5,583	4,823	5,420	36	5,456	4,749	(2.9)	--	(2.3)	(1.5)
Unclassified	79	--	79	34	66	--	66	35	(16.5)	--	(16.5)	3.1
Masters	2,214	113	2,327	1,598	2,012	40	2,052	1,560	(9.1)	(64.6)	(11.8)	(2.4)
Certificate	21	--	21	23	98	21	119	63	366.7	--	466.7	174.8
Doctoral	328	92	420	272	339	61	400	244	3.4	(33.7)	(4.8)	(10.4)
<b>Total</b>	<b>21,035</b>	<b>205</b>	<b>21,240</b>	<b>18,672</b>	<b>20,104</b>	<b>170</b>	<b>20,274</b>	<b>18,258</b>	<b>(4.4)</b>	<b>(17.1)</b>	<b>(4.5)</b>	<b>(2.2)</b>

<sup>1</sup> Full-Time Equivalency (FTE) Undergraduate - credit hours/12; Graduate = credit hours/9.

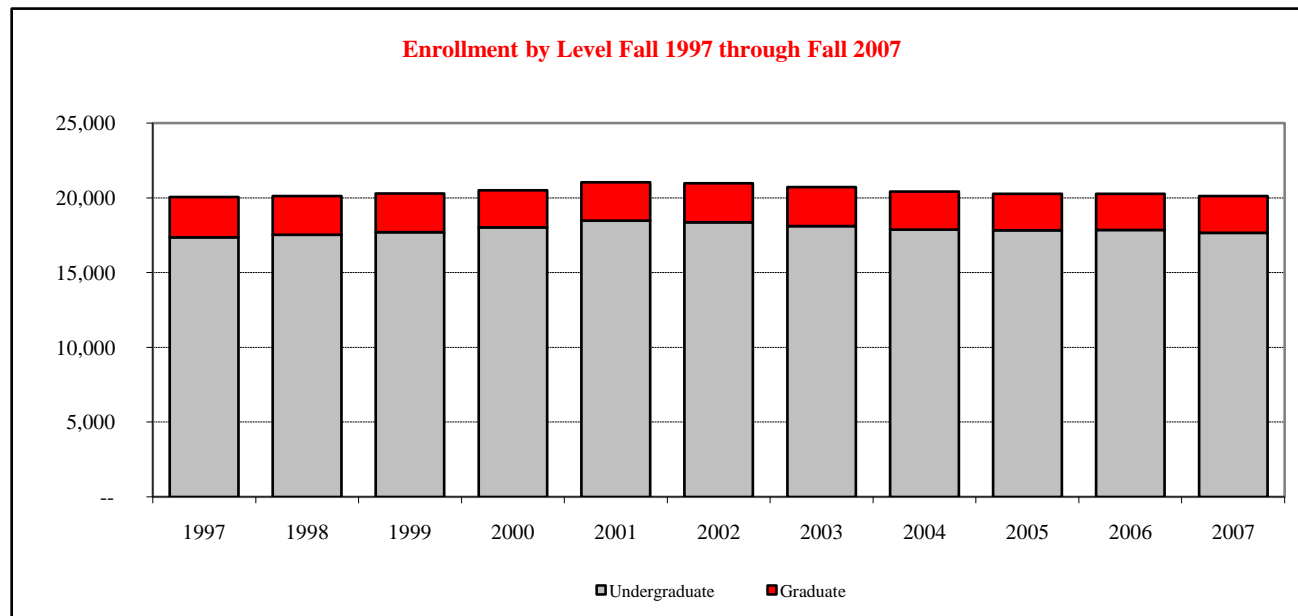
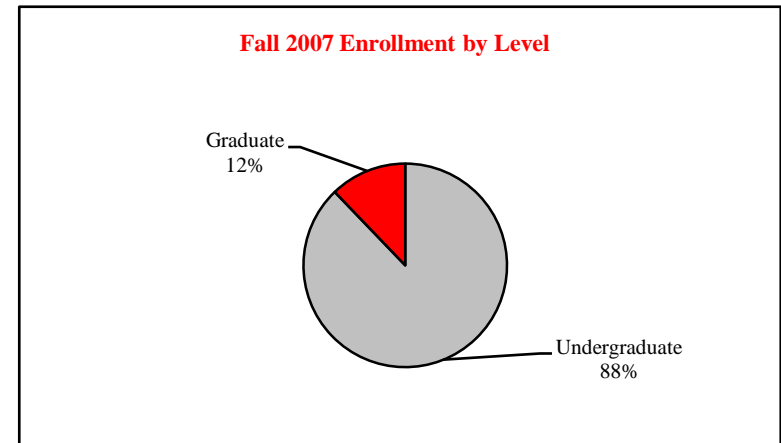




# STUDENT ~ ENROLLMENT

LEVEL ~ FALL 1997 through FALL 2007

<u>Fall</u>	<u>Undergraduate</u>	<u>Graduate</u>	<u>Total</u>
1997	17,366	2,679	20,045
1998	17,518	2,587	20,105
1999	17,703	2,578	20,281
2000	18,018	2,486	20,504
2001	18,472	2,563	21,035
2002	18,352	2,623	20,975
2003	18,097	2,608	20,705
2004	17,866	2,553	20,419
2005	17,827	2,438	20,265
2006	17,842	2,419	20,261
2007	17,655	2,449	20,104





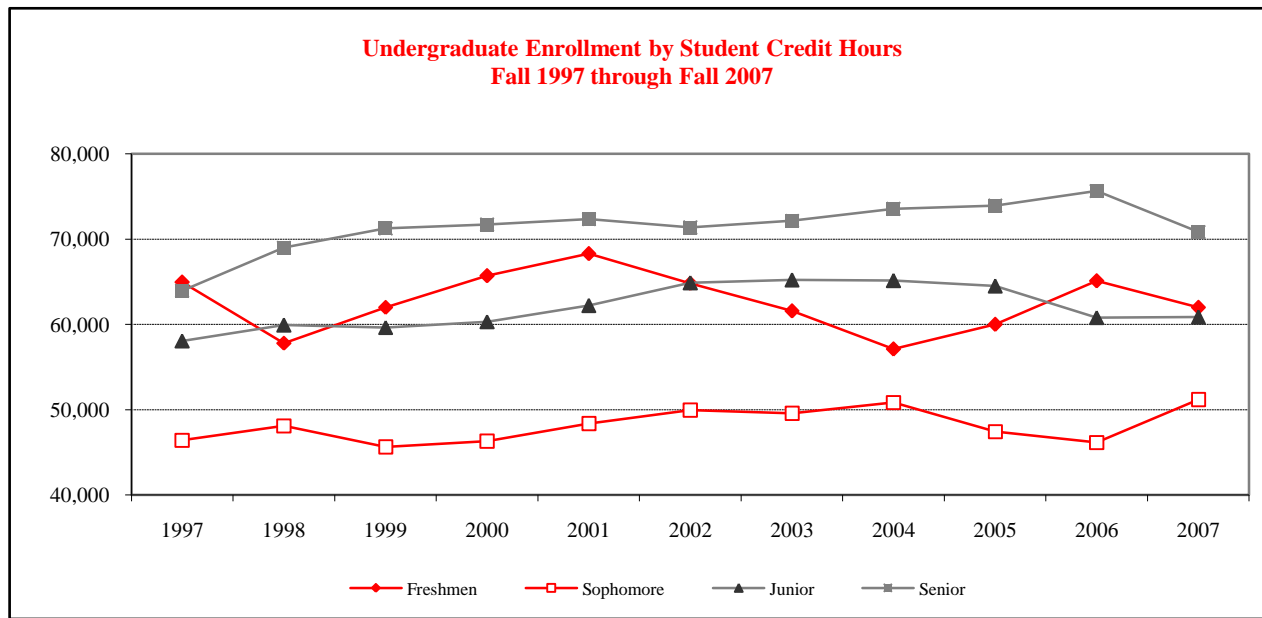
# STUDENT ~ ENROLLMENT CLASS, GENDER & RACIAL/ETHNIC DESIGNATION ~ FALL 2007

	<u>American Indian/ Alaskan Native</u>	<u>Black/Non- Hispanic</u>	<u>Asian/Pacific Islander</u>	<u>Hispanic</u>	<u>White/Non- Hispanic</u>	<u>Non-Resident Aliens</u>	<u>Not Reported</u>	<u>Total</u>
<u>Freshmen</u>								
Male	6	96	47	87	1,501	6	65	1,808
Female	15	201	36	100	2,059	5	75	2,491
<u>Sophomore</u>								
Male	5	58	35	56	1,322	3	69	1,548
Female	5	103	30	74	1,695	7	64	1,978
<u>Junior</u>								
Male	7	91	34	60	1,609	10	95	1,906
Female	5	129	38	80	2,062	14	110	2,438
<u>Senior</u>								
Male	3	107	43	82	2,012	21	101	2,369
Female	11	185	54	81	2,561	35	124	3,051
<u>Unclassified</u>								
Male	--	--	2	1	21	11	1	36
Female	--	5	1	1	16	6	1	30
<u>Undergraduate Total</u>								
Male	21	352	161	286	6,465	51	331	7,667
Female	36	623	159	336	8,393	67	374	9,988
<u>Masters</u>								
Male	3	21	26	16	494	122	30	712
Female	4	49	29	32	1,027	123	36	1,300
<u>Certificate</u>								
Male	1	--	--	--	18	2	3	24
Female	--	4	2	--	64	3	1	74
<u>Doctoral</u>								
Male	1	11	1	3	93	21	2	132
Female	--	13	3	4	141	40	6	207
<u>Graduate Total</u>								
Male	5	32	27	19	605	145	35	868
Female	4	66	34	36	1,232	166	43	1,581



# STUDENT ~ ENROLLMENT CLASS LEVEL & CREDIT HOURS ~ FALL 1997 through FALL 2007

	<u>1997</u>	<u>1998</u>	<u>1999</u>	<u>2000</u>	<u>2001</u>	<u>2002</u>	<u>2003</u>	<u>2004</u>	<u>2005</u>	<u>2006</u>	<u>2007</u>
Freshmen	64,935	57,785	61,993	65,692	68,273	64,805	61,570	57,099	59,989	65,095	61,962
Sophomore	46,429	48,114	45,620	46,299	48,350	49,924	49,558	50,848	47,433	46,166	51,161
Junior	58,056	59,913	59,629	60,300	62,208	64,854	65,193	65,120	64,488	60,795	60,848
Senior	63,934	69,000	71,253	71,699	72,344	71,345	72,157	73,533	73,902	75,641	70,851
Unclassified	958	852	664	444	515	553	426	458	391	381	526
Masters	14,818	14,588	14,410	14,211	13,979	14,450	14,760	14,500	14,119	13,933	13,915
Certificate	226	179	202	208	208	204	208	289	248	393	507
Doctoral	1,643	1,658	1,552	1,594	1,942	2,068	2,073	2,122	2,091	2,053	1,969
Total Credit Hours	250,999	252,088	255,321	260,447	267,819	268,202	265,945	263,968	262,660	264,456	261,738







# STUDENT ~ ENROLLMENT

## Illinois Residents by County ~ Fall 2007

County	Undergrads	Graduates	County	Undergrads	Graduates	County	Undergrads	Graduates
Adams	72	5	Hardin	--	--	Morgan	58	8
Alexander	--	--	Henderson	3	--	Moultrie	9	1
Bond	9	--	Henry	109	13	Ogle	55	8
Boone	51	6	Iroquois	89	12	<b>Peoria</b>	<b>417</b>	<b>123</b>
Brown	3	2	Jackson	13	2	<b>Piatt</b>	<b>68</b>	<b>12</b>
Bureau	100	17	Jasper	4	--	Pike	6	--
Calhoun	2	--	Jefferson	4	1	Pope	--	--
Carroll	20	2	Jersey	5	1	Pulaski	--	--
Cass	6	1	Jo Davies	18	2	Putnam	20	2
<b>Champaign</b>	<b>424</b>	<b>58</b>	Johnson	--	--	Randolph	6	--
Christian	46	5	<b>Kane</b>	<b>803</b>	<b>26</b>	Richland	1	--
Clark	2	1	Kankakee	189	14	Rock Island	173	26
Clay	--	1	Kendall	131	3	Saline	2	--
Clinton	20	2	Knox	47	16	<b>Sangamon</b>	<b>341</b>	<b>77</b>
Coles	32	4	<b>Lake</b>	<b>1,044</b>	<b>29</b>	Schuyler	1	1
<b>Cook</b>	<b>4,631</b>	<b>159</b>	LaSalle	327	62	Scott	1	--
Crawford	5	--	Lawrence	2	--	Shelby	14	7
Cumberland	4	1	Lee	23	6	St. Clair	102	11
DeKalb	96	2	<b>Livingston</b>	<b>186</b>	<b>36</b>	Stark	8	6
<b>DeWitt</b>	<b>67</b>	<b>18</b>	<b>Logan</b>	<b>82</b>	<b>26</b>	Stephenson	64	8
Douglas	22	4	<b>Macon</b>	<b>186</b>	<b>49</b>	<b>Tazewell</b>	<b>381</b>	<b>109</b>
<b>DuPage</b>	<b>1,753</b>	<b>54</b>	Macoupin	49	6	Union	3	1
Edgar	11	1	Madison	127	19	Vermilion	119	15
Edwards	--	--	Marion	4	1	Wabash	3	--
Effingham	27	8	Marshall	25	9	Warren	14	3
Fayette	3	--	<b>Mason</b>	<b>42</b>	<b>10</b>	Washington	5	1
<b>Ford</b>	<b>69</b>	<b>9</b>	Massac	--	--	Wayne	--	1
Franklin	7	--	McDonough	31	7	White	3	--
Fulton	42	17	<b>McHenry</b>	<b>573</b>	<b>18</b>	Whiteside	84	13
Gallatin	--	--	<b>McLean</b>	<b>1,321</b>	<b>501</b>	Williamson	11	--
Greene	4	1	<b>Menard</b>	<b>19</b>	<b>3</b>	Winnebago	347	20
Grundy	180	17	Mercer	30	3	<b>Woodford</b>	<b>224</b>	<b>60</b>
Hamilton	--	--	Monroe	34	1	Illinois Total	17,050	1,852
Hancock	24	5	Montgomery	43	5			



Bold - McLean and Surrounding Counties  
 Cook - and Collar Counties



# STUDENT ~ ENROLLMENT

STATE RESIDENCE ~ FALL 2007

State	Undergraduates	Graduates	State	Undergraduates	Graduates	State	Undergraduates	Graduates
Alabama	7	1	Maine	--	2	Pennsylvania	9	5
Alaska	3	1	Maryland	5	1	Rhode Island	--	1
Arizona	5	4	Massachusetts	3	1	South Carolina	4	--
Arkansas	2	2	<b>Michigan</b>	<b>30</b>	<b>18</b>	South Dakota	--	1
<b>California</b>	<b>22</b>	<b>17</b>	<b>Minnesota</b>	<b>13</b>	<b>13</b>	Tennessee	8	6
Colorado	12	4	Mississippi	1	1	<b>Texas</b>	<b>25</b>	<b>10</b>
Connecticut	1	2	<b>Missouri</b>	<b>44</b>	<b>13</b>	Utah	3	1
Delaware	--	1	Montana	3	--	Vermont	9	8
Dist. of Columbia	--	--	Nebraska	5	4	Virginia	--	2
<b>Florida</b>	<b>24</b>	<b>7</b>	Nevada	3	1	Washington	5	3
Georgia	13	11	New Hampshire	1	3	West Virginia	--	--
Hawaii	3	--	New Jersey	4	4	<b>Wisconsin</b>	<b>38</b>	<b>20</b>
Idaho	3	1	New Mexico	2	--	Wyoming	--	2
<b>Illinois</b>	<b>17,050</b>	<b>1,852</b>	New York	7	12	Territories	2	2
<b>Indiana</b>	<b>45</b>	<b>16</b>	North Carolina	6	2	<b>U.S. Foreign</b>	<b>37</b>	<b>20</b>
<b>Iowa</b>	<b>31</b>	<b>24</b>	North Dakota	1	1	Unknown	--	2
Kansas	15	6	<b>Ohio</b>	<b>13</b>	<b>12</b>			
Kentucky	4	9	Oklahoma	8	--			
Louisiana	5	3	Oregon	3	6	U.S. Total	17,537	2,138

Bold - Illinois and Top Ten Feeder States

- 94.0% of All Students are Residents of Illinois (Undergraduate 96.6%; Graduate 75.6%)
  - 23.8% of All Students are Residents of Cook County (Undergraduate 26.2%; Graduate 6.5%)
  - 51.5% of All Students are from Cook County and Collar counties (Undergraduate 56.7%; Graduate 14.0%)
  - 9.1% of All Students are from McLean County (Undergraduate 7.5%; Graduate 20.5%)
  - 24.5% of All Students are from McLean County and Surrounding Counties (Undergraduate 21.7%; Graduate 44.6%)
- Students come from 93 of the 102 Illinois Counties; 49 of the 50 United States; and 65 Countries outside the US.



# STUDENT ~ ENROLLMENT

## NON-RESIDENT ALIEN STUDENTS ~ FALL 2007

	<u>Undergraduates</u>	<u>Graduates</u>		<u>Undergraduates</u>	<u>Graduates</u>		<u>Undergraduates</u>	<u>Graduates</u>
<b>AFRICA</b>			<b>EUROPE</b>			<b>MIDDLE EAST</b>		
Angola	1	--	Belgium	--	1	Cyprus	--	1
Cameroon	1	3	Bulgaria	2	1	Iran	--	1
Chad	--	1	Denmark	--	1	Lebanon	--	3
Egypt	--	1	Estonia	2	--	Palestinian Territory	--	1
Ethiopia	--	2	France	3	1	Saudi Arabia	1	--
Ghana	--	8	Germany Fed Rep	6	9	Turkey	--	3
Ivory Coast	1	--	Italy	--	1	Yemen (Sanaa)	--	1
Kenya	1	6	Netherlands	--	1			
Mozambique	--	1	Norway	--	1			
Nigeria	6	--	Poland	1	--	<b>NORTH AMERICA</b>		
South Africa	2	--	Portugal	1	--	Bermuda	2	--
Tanzania	--	1	Serbia	2	--	Canada	12	2
Zimbabwe	1	1	Slovenia	1	--	United States	17,537	2,138
			Spain	1	1			
<b>ASIA</b>			Sweden	1	--	<b>OCEANIA</b>		
Armenia	--	2	Switzerland	--	1	Australia	--	1
China	4	32						
Hong Kong	1	1	<b>LATIN AMERICA</b>					
India	4	132	<b>Caribbean</b>					
Japan	6	5	Barbados	3	1			
Korea, South	30	18	Jamaica	--	1	Unknown	8	1
Malaysia	--	4	Trinidad and Tobago	--	1			
Maldives	1	--						
Nepal	--	7	<b>Central America</b>					
Pakistan	2	3	Mexico	3	2			
Philippines	--	5	Panama	--	1			
Russia	1	3						
Sri Lanka	2	1	<b>South America</b>					
Taiwan	--	8	Brazil	3	3	<b>Total International</b>	118	311
Thailand	1	19	Chile	1	--			
Upper Volta	--	1	Colombia	--	1			
Uzbekistan	--	3	Venezuela	--	1	<b>Total Enrollment</b>	17,655	2,449



# DEGREES CONFERRED

COLLEGE ~ FISCAL YEAR 2001 through FISCAL YEAR 2007

<u>College</u>	<u>Undergraduate</u>						
	<u>FY 2001</u>	<u>FY 2002</u>	<u>FY 2003</u>	<u>FY 2004</u>	<u>FY 2005</u>	<u>FY 2006</u>	<u>FY 2007</u>
Applied Science and Technology	971	960	1,001	947	974	993	1,005
Arts and Sciences	1,321	1,309	1,280	1,359	1,437	1,378	1,522
Business	727	756	782	832	878	748	752
Education	702	788	812	680	625	692	630
Fine Arts	222	234	207	186	204	203	214
Mennonite College of Nursing	50	96	84	86	116	104	124
Other	48	36	36	58	40	40	59
Total	4,041	4,179	4,202	4,148	4,274	4,158	4,306

<u>College</u>	<u>Graduate</u>						
	<u>FY 2001</u>	<u>FY 2002</u>	<u>FY 2003</u>	<u>FY 2004</u>	<u>FY 2005</u>	<u>FY 2006</u>	<u>FY 2007</u>
Applied Science and Technology	98	116	117	130	142	136	108
Arts and Sciences	249	276	262	269	297	288	282
Business	85	69	93	98	102	103	98
Education	214	180	225	173	183	225	171
Fine Arts	47	48	64	52	47	51	64
Mennonite College of Nursing	14	14	12	6	9	14	18
Total	707	703	773	728	780	817	741

<u>College</u>	<u>Total</u>						
	<u>FY 2001</u>	<u>FY 2002</u>	<u>FY 2003</u>	<u>FY 2004</u>	<u>FY 2005</u>	<u>FY 2006</u>	<u>FY 2007</u>
Applied Science and Technology	1,069	1,076	1,118	1,077	1,116	1,129	1,113
Arts and Sciences	1,570	1,585	1,542	1,628	1,734	1,666	1,804
Business	812	825	875	930	980	851	850
Education	916	968	1,037	853	808	917	801
Fine Arts	269	282	271	238	251	254	278
Mennonite College of Nursing	64	110	96	92	125	118	142
Other	48	36	36	58	40	40	40
Total	4,748	4,882	4,975	4,876	5,054	4,975	5,047



# DEGREES CONFERRED

## UNDERGRADUATE, GENDER & RACIAL/ETHNIC DESIGNATION

<u>Racial/Ethnic Designation</u>	<u>Male</u>						
	<u>FY 2001</u>	<u>FY 2002</u>	<u>FY 2003</u>	<u>FY 2004</u>	<u>FY 2005</u>	<u>FY 2006</u>	<u>FY 2007</u>
American Indian/Alaskan Native	6	2	4	6	2	2	8
Black/Non-Hispanic	87	76	84	77	76	63	59
Asian/Pacific Islander	27	25	20	30	31	29	22
Hispanic	34	34	43	39	37	50	60
White/Non-Hispanic	1,512	1,537	1,545	1,519	1,618	1,520	1,632
Not Reported	--	1	1	2	4	23	49
Non-Resident Alien	11	19	13	14	19	21	20
Total	1,677	1,694	1,710	1,687	1,787	1,708	1,850

<u>Racial/Ethnic Designation</u>	<u>Female</u>						
	<u>FY 2001</u>	<u>FY 2002</u>	<u>FY 2003</u>	<u>FY 2004</u>	<u>FY 2005</u>	<u>FY 2006</u>	<u>FY 2007</u>
American Indian/Alaskan Native	5	5	5	9	8	5	6
Black/Non-Hispanic	163	167	166	127	122	135	129
Asian/Pacific Islander	26	30	35	33	29	33	45
Hispanic	50	46	60	52	61	72	73
White/Non-Hispanic	2,106	2,219	2,212	2,220	2,246	2,160	2,151
Not Reported	--	--	1	1	2	25	35
Non-Resident Alien	14	18	13	19	19	20	17
Total	2,364	2,485	2,492	2,461	2,487	2,450	2,456

<u>Racial/Ethnic Designation</u>	<u>Total</u>						
	<u>FY 2001</u>	<u>FY 2002</u>	<u>FY 2003</u>	<u>FY 2004</u>	<u>FY 2005</u>	<u>FY 2006</u>	<u>FY 2007</u>
American Indian/Alaskan Native	11	7	9	15	10	7	14
Black/Non-Hispanic	250	243	250	204	198	198	188
Asian/Pacific Islander	53	55	55	63	60	62	67
Hispanic	84	80	103	91	98	122	133
White/Non-Hispanic	3,618	3,756	3,757	3,739	3,864	3,680	3,783
Not Reported	--	1	2	3	6	48	84
Non-Resident Alien	25	37	26	33	38	41	37
Total	4,041	4,179	4,202	4,148	4,274	4,158	4,306



# DEGREES CONFERRED

## GRADUATE, LEVEL & RACIAL/ETHNIC DESIGNATION

<u>Racial/Ethnic Designation</u>	<u>Masters</u>						
	<u>FY 2001</u>	<u>FY 2002</u>	<u>FY 2003</u>	<u>FY 2004</u>	<u>FY 2005</u>	<u>FY 2006</u>	<u>FY 2007</u>
American Indian/Alaskan Native	1	2	--	1	1	--	2
Black/Non-Hispanic	29	29	31	21	29	36	20
Asian/Pacific Islander	11	12	9	9	14	12	6
Hispanic	12	17	6	5	7	12	17
White/Non-Hispanic	543	506	585	536	568	588	529
Not Reported	--	--	--	--	--	9	27
Non-Resident Alien	74	78	79	106	96	98	70
Total	670	644	710	678	715	755	671

<u>Racial/Ethnic Designation</u>	<u>IBHE Approved Certificate</u>						
	<u>FY 2001</u>	<u>FY 2002</u>	<u>FY 2003</u>	<u>FY 2004</u>	<u>FY 2005</u>	<u>FY 2006</u>	<u>FY 2007</u>
American Indian/Alaskan Native	--	--	--	--	--	--	--
Black/Non-Hispanic	--	--	1	1	--	--	2
Asian/Pacific Islander	1	--	2	--	1	1	2
Hispanic	--	--	--	--	2	1	--
White/Non-Hispanic	4	7	16	6	13	8	17
Not Reported	--	--	--	--	--	--	--
Non-Resident Alien	--	--	1	--	--	--	--
Total	5	7	20	7	16	10	21

<u>Racial/Ethnic Designation</u>	<u>Doctoral</u>						
	<u>FY 2001</u>	<u>FY 2002</u>	<u>FY 2003</u>	<u>FY 2004</u>	<u>FY 2005</u>	<u>FY 2006</u>	<u>FY 2007</u>
American Indian/Alaskan Native	--	--	--	--	--	--	--
Black/Non-Hispanic	3	--	4	6	7	4	5
Asian/Pacific Islander	1	--	--	--	1	--	1
Hispanic	--	2	1	1	1	1	1
White/Non-Hispanic	24	38	29	29	33	39	31
Not Reported	--	--	--	--	--	--	--
Non-Resident Alien	4	12	21	7	7	8	11
Total	32	52	55	43	49	52	49

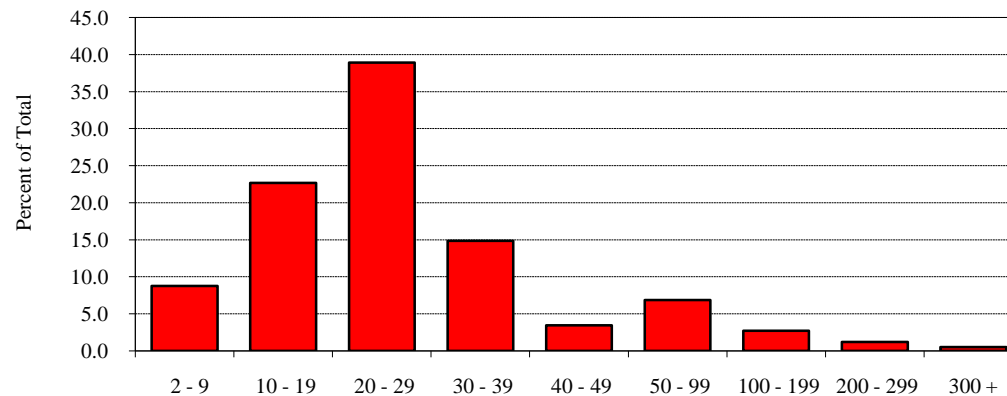


# STUDENT ~ OTHER

## CLASS SIZE ~ FALL 2004 through FALL 2007

Class Size <sup>1</sup>	Fall 2004			Fall 2005			Fall 2006			Fall 2007		
	Number	Percent	Cumulative Percent	Number	Percent	Cumulative Percent	Number	Percent	Cumulative Percent	Number	Percent	Cumulative Percent
2 - 9	195	8.1	8.1	204	8.6	8.6	193	8.1	8.1	209	8.8	8.8
10 - 19	502	20.8	28.8	553	23.3	31.9	551	23.0	31.0	540	22.7	31.5
20 - 29	900	37.2	66.0	853	35.9	67.8	909	37.9	69.0	926	38.9	70.4
30 - 39	453	18.7	84.7	401	16.9	84.7	375	15.6	84.6	354	14.9	85.3
40 - 49	126	5.2	90.0	85	3.6	88.3	91	3.8	88.4	82	3.4	88.7
50 - 99	132	5.5	95.4	161	6.8	95.0	172	7.2	95.6	163	6.8	95.5
100 - 199	67	2.8	98.2	73	3.1	98.1	64	2.7	98.2	65	2.7	98.3
200 - 299	39	1.6	99.8	34	1.4	99.5	33	1.4	99.6	29	1.2	99.5
300 +	5	0.2	100.0	11	0.5	100.0	9	0.4	100.0	12	0.5	100.0
Total	2,419	100.0	100.0	2,375	100.0	100.0	2,397	100.0	100.0	2,380	100.0	100.0

Class Size Distribution  
Fall 2007



<sup>1</sup> Breakdowns are based on *U.S. News and World Report* definition.



# STUDENT ~ OTHER

## TIME-TO-DEGREE ~ FALL 1996 through FALL 2003

### Number of Degree Recipients as of August 2007

	<u>1996</u>	<u>1997</u>	<u>1998</u>	<u>1999</u>	<u>2000</u>	<u>2001</u>	<u>2002</u>	<u>2003</u>
Graduated from Fall Cohort	1,729	1,979	1,748	1,983	2,126	2,175	2,046	1,295

### Time-to-Degree for those who Graduated from Fall Cohort

<u>Years</u>	<u>1996</u>	<u>1997</u>	<u>1998</u>	<u>1999</u>	<u>2000</u>	<u>2001</u>	<u>2002</u>	<u>2003</u>
Three or Fewer	0.5%	0.3%	0.5%	0.4%	0.2%	0.6%	0.4%	0.8%
Four	50.1%	50.9%	53.8%	55.7%	56.5%	60.0%	62.2%	99.2%
Five	37.7%	39.9%	37.3%	35.9%	36.0%	33.2%	37.3%	--
Six	7.2%	6.3%	5.8%	5.9%	5.7%	6.3%	--	--
Seven	2.3%	1.6%	1.7%	1.5%	1.6%	--	--	--
Eight	1.0%	0.8%	0.4%	0.6%	--	--	--	--
Nine	0.6%	0.1%	0.5%	--	--	--	--	--
Ten	0.5%	0.2%	--	--	--	--	--	--
	100.0%	100.0%	100.0%	100.0%	100.0%	100.0%	100.0%	100.0%

*Educating Illinois 2003-2010* contains a goal for the University to decrease the average time to degree for new beginning freshmen maintaining continuous enrollment from four years and one semester to four years. For native undergraduate students (Fall cohort 2001) who graduated from Illinois State University, 60.6 percent finished their degree in four years or less. An additional 33.2 percent graduated in the fifth year, and 6.3 percent graduated in the sixth year (boxes).





**Percent of New Beginning Freshmen that Return for Second Fall Term**

	<u>2001</u>	<u>2002</u>	<u>2003</u>	<u>2004</u>	<u>2005</u>	<u>2006</u>
<b>Fall to Fall Retention Rates</b>						
All Students	79.7%	82.6%	83.6%	85.0%	84.0%	83.3%
Male Students	77.1	82.7	83.2	84.4	82.9	81.6
Female Students	81.2	82.5	83.9	85.3	84.7	84.5
Black/Non-Hispanic Students	66.8	71.4	71.8	73.5	65.9	63.2
Hispanic Students	77.1	75.3	68.3	80.4	79.4	75.4

*Educating Illinois 2003-2010* calls for the University to increase freshmen retention rates from 83 percent to 88 percent. The University is making progress toward this with 83.3 percent of the fall 2006 new beginning freshmen cohort returning in fall 2007.

**New Beginning Freshmen Cohort Year**

	<u>1996</u>	<u>1997</u>	<u>1998</u>	<u>1999</u>	<u>2000</u>	<u>2001</u>
<b>Six Year Graduation Rates</b>						
All Students	57.2%	59.1%	62.2%	63.2%	64.0%	65.1%
Male Students	53.4	53.2	57.5	57.6	59.6	59.1
Female Students	59.5	62.8	64.5	66.4	66.8	68.7
Black/Non-Hispanic Students	36.6	45.4	38.9	42.5	52.9	50.7
Hispanic Students	39.2	40.4	40.0	38.5	50.0	56.3

*Educating Illinois 2003-2010* calls for the University to increase graduation rates from 60 percent to 67 percent. The University is making progress toward this with 65.1 percent of the fall 2001 new beginning freshmen cohort graduating by summer 2007.





ILLINOIS STATE UNIVERSITY

# FACULTY/STAFF

## DID YOU KNOW?

The University has had 17 presidents in its 150 years of existence.

Many have University buildings named after them including Cook and Felmley. The elementary school is named after Thomas Metcalf.

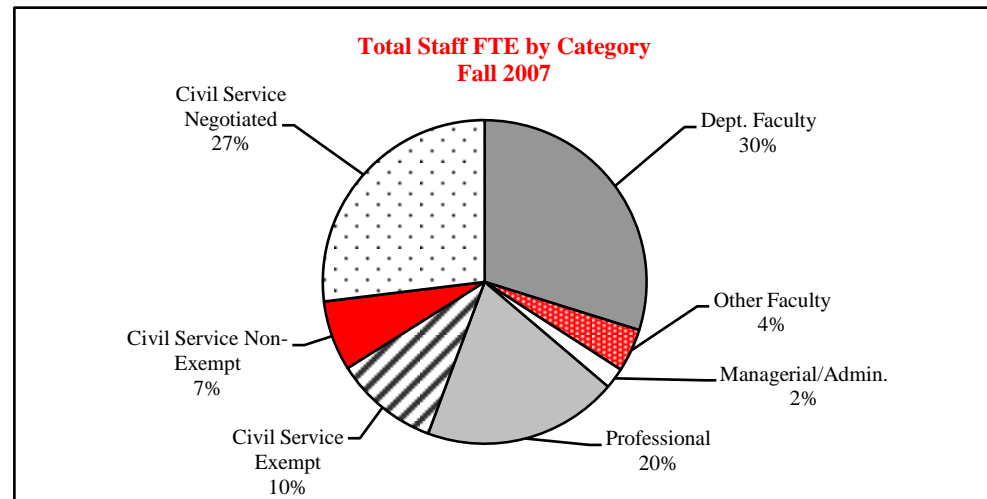


Seated in the center: Thomas Metcalf and President John W. Cook, Standing on the left is David Felmley.  
Cook's Tenure as President was 1890-1899



# FACULTY/STAFF EMPLOYEE CATEGORY FULL-TIME EQUIVALENCY ~ FALL 2006 and FALL 2007

Employee Category	Fall 2006			Fall 2007		
	Full-Time Number	Part-Time FTE	Total FTE	Full-Time Number	Part-Time FTE	Total FTE
Departmental Faculty <sup>1</sup>	856	95.7	951.7	843	96.5	939.5
Non-Departmental Faculty	7	2.7	9.7	7	2.9	9.9
Library Faculty	26	0.7	26.7	28	0.1	28.1
Lab School Faculty	94	2.9	96.9	94	3.6	97.6
Managerial/Administrative	66	1.7	67.7	65	0.9	65.9
Professional	569	29.4	598.4	584	29.8	613.8
Civil Service						
Exempt	310	2.6	312.6	325	2.3	327.3
Non-Exempt	226	19.4	245.4	204	16.8	220.8
Negotiated	805	7.2	812.2	834	14.8	848.8
Civil Service Total	1,341	29.2	1,370.2	1,363	33.9	1,396.9
University Total	2,959	162.4	3,121.4	2,984	167.8	3,151.8



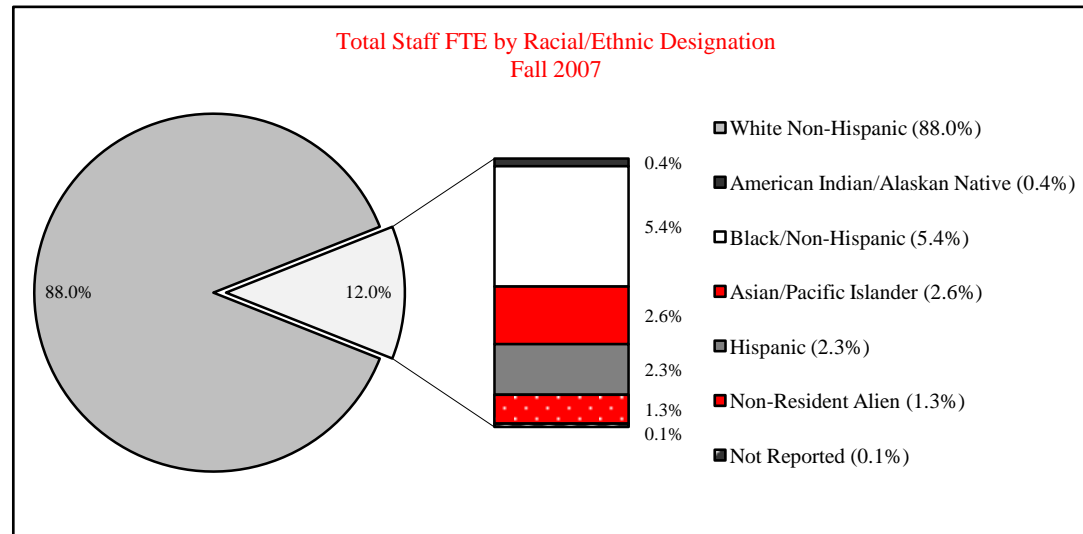
<sup>1</sup> Includes Department Chairs and part-time faculty whose major appointment is Administrative/Professional or Civil Service



# FACULTY/STAFF

## CATEGORY, GENDER AND RACIAL/ETHNIC DESIGNATION ~ FALL 2007

	Faculty				Administrative/ Professional	Civil Service	Total
	Departmental <sup>1</sup>	Non-Dept.	Library	Lab School			
<u>Gender</u>							
Male	589	7	9	30	314	631	1,580
Female	547	15	20	70	393	782	1,827
<u>Racial/Ethnic Designation</u>							
American Indian/Alaskan Native	3	--	--	--	1	8	12
Black/Non-Hispanic	33	2	--	3	47	98	183
Asian/Pacific Islander	60	1	--	1	10	16	88
Hispanic	23	1	--	1	13	39	77
White/Non-Hispanic	994	18	28	95	612	1,251	2,998
Non-Resident Alien	22	--	1	--	20	1	44
Not Reported	1	--	--	--	4	--	5
<b>Total</b>	<b>1,136</b>	<b>22</b>	<b>29</b>	<b>100</b>	<b>707</b>	<b>1,413</b>	<b>3,407</b>



<sup>1</sup> Includes Department Chairs

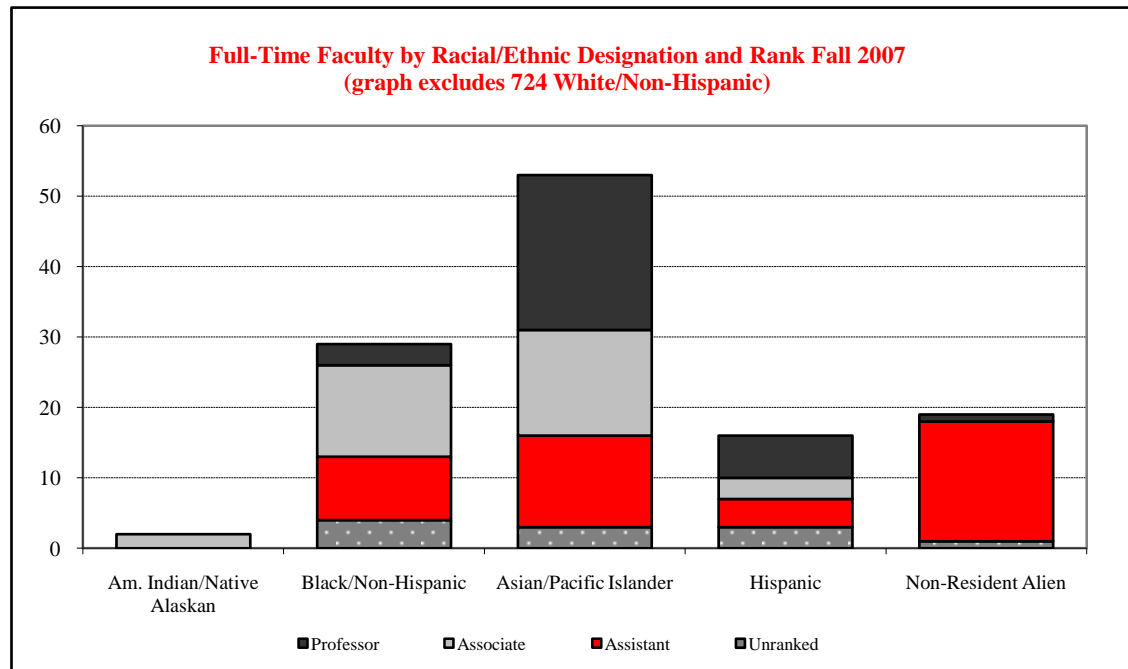


# FACULTY

## RANK AND RACIAL/ETHNIC DESIGNATION ~ FALL 2007

<u>Faculty - Full-Time</u>	American	Black/	Asian/		White/	Not	Non-	<u>Total</u>
	Indian/ Native <u>Alaskan</u>	Non- Hispanic	Pacific Islander	Hispanic	Non- Hispanic	Reported	Resident <u>Alien</u>	
Professor	--	3	22	6	203	--	1	235
Associate Professor	2	13	15	3	194	--	--	227
Assistant Professor	--	9	13	4	175	--	17	218
Unranked	--	4	3	3	152	--	1	163
Total	2	29	53	16	724	--	19	843

<u>Faculty - Part-Time</u>	American	Black/	Asian/		White/	Not	Non-	<u>Total</u>
	Indian/ Native <u>Alaskan</u>	Non- Hispanic	Pacific Islander	Hispanic	Non- Hispanic	Reported	Resident <u>Alien</u>	
Unranked	1	4	7	7	270	1	3	293

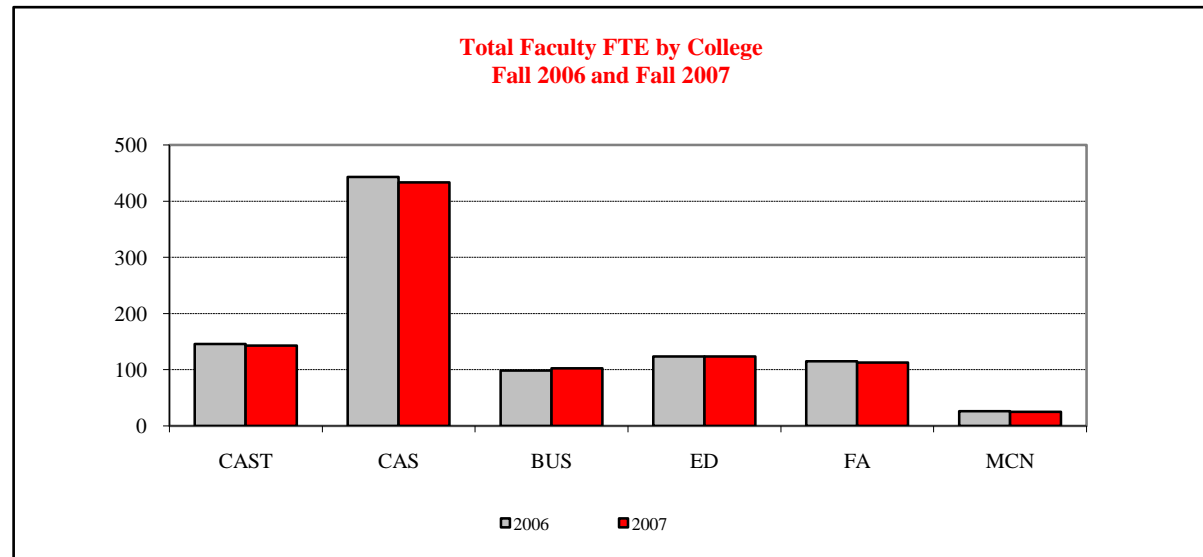




# FACULTY

## FTE<sup>1</sup> BY COLLEGE, GENDER & TENURE STATUS ~ FALL 2006 and FALL 2007

College	Fall 2006					Fall 2007				
	Tenured/Tenure Track		Non-Tenure Track		Total	Tenured/Tenure Track		Non-Tenure Track		Total
	Male	Female	Male	Female		Male	Female	Male	Female	
Applied Science and Technology	70.0	40.0	12.5	23.4	145.9	65.0	36.0	15.9	25.6	142.6
Arts and Sciences	202.0	124.0	55.7	61.0	442.8	201.0	124.0	50.1	57.9	433.0
Business	60.0	19.0	10.7	9.0	98.7	61.0	22.0	11.4	8.2	102.6
Education	30.0	40.0	10.8	42.7	123.5	30.0	40.0	9.4	44.2	123.6
Fine Arts	54.0	41.0	9.5	10.3	114.8	48.0	42.0	9.7	12.8	112.6
Mennonite College of Nursing	0.0	11.0	0.0	15.2	26.2	0.0	11.0	0.8	13.4	25.2
<u>Total</u>	416.0	275.0	99.1	161.6	951.7	405.0	275.0	97.4	162.1	939.5



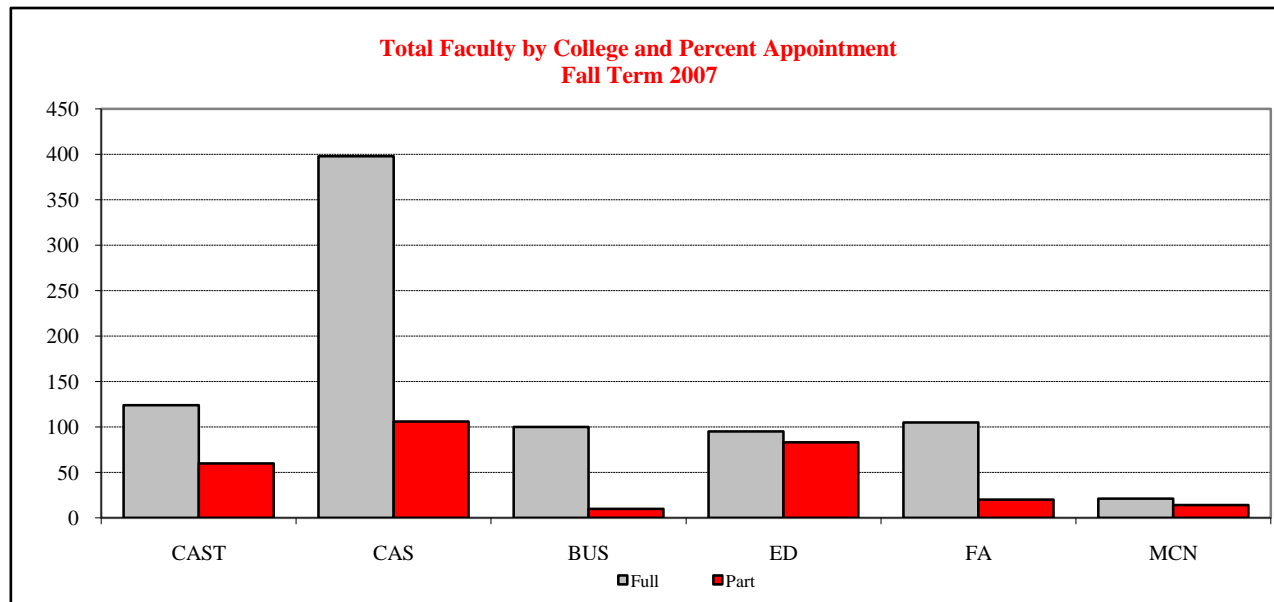
<sup>1</sup> Full-Time Equivalent (FTE) Faculty



# FACULTY

## COLLEGE & PERCENT APPOINTMENT ~ FALL 2001 through FALL 2007

College	2001		2002		2003		2004		2005		2006		2007	
	Full	Part	Full	Part	Full	Part	Full	Part	Full	Part	Full	Part	Full	Part
Applied Science and Technology	127	54	129	47	131	44	131	47	129	49	129	51	124	60
Arts and Sciences	429	85	406	96	405	80	393	90	392	100	408	92	398	106
Business	92	24	91	19	94	18	93	14	91	11	95	10	100	10
Education	93	98	98	62	96	77	87	83	87	84	92	80	95	83
Fine Arts	107	14	105	19	103	13	109	11	109	15	109	14	105	20
Mennonite College of Nursing	17	9	18	11	17	6	18	12	21	15	23	10	21	14
<b>Total</b>	<b>865</b>	<b>284</b>	<b>847</b>	<b>254</b>	<b>846</b>	<b>238</b>	<b>831</b>	<b>257</b>	<b>829</b>	<b>274</b>	<b>856</b>	<b>257</b>	<b>843</b>	<b>293</b>





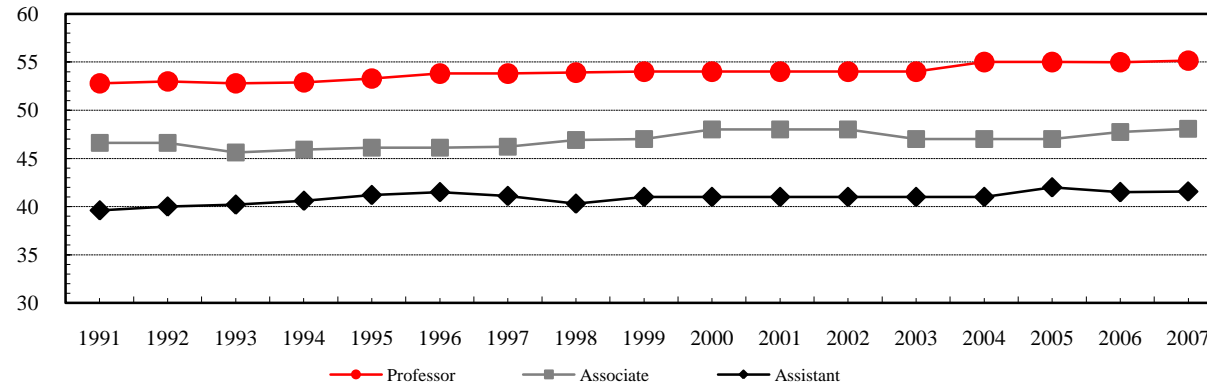


# FACULTY

## TENURED/TENURE TRACK DEPARTMENTAL, AGE BY RANK ~ FALL 2007

<u>Age<sup>1</sup> Range</u>	<u>Professor</u>	<u>Associate Professor</u>	<u>Assistant Professor</u>	<u>Total</u>
29 or Less	--	--	6	6
30 - 34	--	2	44	46
35 - 39	2	35	46	83
40 - 44	11	45	51	107
45 - 49	42	52	28	122
50 - 54	55	43	22	120
55 - 59	56	33	16	105
60 - 64	48	11	5	64
65 or Over	21	6	--	27
Total	235	227	218	680

**Average Age<sup>1</sup> of Tenured/Tenure Track  
Departmental Faculty  
Fall 1991 through Fall 2007**



<sup>1</sup> Age is calculated as of December 31<sup>st</sup> of the reported year.



# FACULTY/STAFF

## FALL TO FALL RETENTION RATES

	Year of Initial Hire						
	<u>2001</u>	<u>2002</u>	<u>2003</u>	<u>2004</u>	<u>2005</u>	<u>2006</u>	<u>2007</u>
<u>New Full-Time Assistant Professors</u>							
Number of New Hires	53	56	42	31	25	33	35
Percent that Returned 2nd Fall	92.5	96.4	100.0	90.3	100.0	97.0	--
Percent that Returned 4th Fall	73.6	76.8	92.9	74.2	--	--	--
Percent that Returned 6th Fall	66.0	69.6	--	--	--	--	--
<u>New Full-Time Non Tenure-Track Faculty</u>							
Number of New Hires	45	31	20	14	30	42	42
Percent that Returned 2nd Fall	62.2	83.9	55.0	64.3	60.0	57.1	--
Percent that Returned 4th Fall	44.4	61.3	30.0	64.3	--	--	--
Percent that Returned 6th Fall	33.3	51.6	--	--	--	--	--
<u>New Full-Time Lab School Faculty</u>							
Number of New Hires	11	6	4	10	4	12	10
Percent that Returned 2nd Fall	81.8	50.0	75.0	100.0	75.0	83.3	--
Percent that Returned 4th Fall	63.6	33.3	75.0	50.0	--	--	--
Percent that Returned 6th Fall	54.5	33.3	--	--	--	--	--
<u>New Full-Time Administrative/Professional</u>							
Number of New Hires	92	78	52	70	93	95	97
Percent that Returned 2nd Fall	80.4	79.5	73.1	77.1	80.6	75.8	--
Percent that Returned 4th Fall	59.8	59.0	55.8	50.0	--	--	--
Percent that Returned 6th Fall	43.5	42.3	--	--	--	--	--
<u>New Full-Time Civil Service</u>							
Number of New Hires	133	101	27	24	111	93	131
Percent that Returned 2nd Fall	85.7	84.2	100.0	91.7	91.0	90.3	--
Percent that Returned 4th Fall	69.9	75.2	88.9	75.0	--	--	--
Percent that Returned 6th Fall	59.4	61.4	--	--	--	--	--

A new hire is defined as a staff member who was present that fall but not in the previous fall. He/she may have been hired any time between the two falls. A rehired person is counted as a new hire, if a year had elapsed between leaving and rehire. A person who changed appointment types, that was still employed by the University in a subsequent fall at a 50% or more FTE, was counted as being retained. Faculty include departmental faculty only.



# FACULTY/STAFF

## FALL TO FALL RETENTION RATES ~ MINORITY

	Year of Initial Hire						
	<u>2001</u>	<u>2002</u>	<u>2003</u>	<u>2004</u>	<u>2005</u>	<u>2006</u>	<u>2007</u>
<u>New Full-Time Assistant Professors</u>							
Number of New Hires	9	5	3	3	4	6	4
Percent that Returned 2nd Fall	77.8	80.0	100.0	66.7	100.0	83.3	--
Percent that Returned 4th Fall	66.7	80.0	100.0	66.7	--	--	--
Percent that Returned 6th Fall	55.6	80.0	--	--	--	--	--
<u>New Full-Time Administrative/Professional</u>							
Number of New Hires	18	11	12	10	6	11	15
Percent that Returned 2nd Fall	72.2	81.8	75.0	90.0	66.7	72.7	--
Percent that Returned 4th Fall	50.0	45.5	41.7	60.0	--	--	--
Percent that Returned 6th Fall	27.8	45.0	--	--	--	--	--
<u>New Full-Time Civil Service</u>							
Number of New Hires	16	12	3	2	18	13	25
Percent that Returned 2nd Fall	81.3	91.7	100.0	50.0	88.9	76.9	--
Percent that Returned 4th Fall	56.3	75.0	66.7	50.0	--	--	--
Percent that Returned 6th Fall	50.0	50.0	--	--	--	--	--

*Educating Illinois 2003-2010* charges the University with increasing the retention and promotion of faculty and staff from protected classes. In supporting University planning, these matrices display minority retention rates for new full-time assistant professors, administrative/professional and civil service staff.



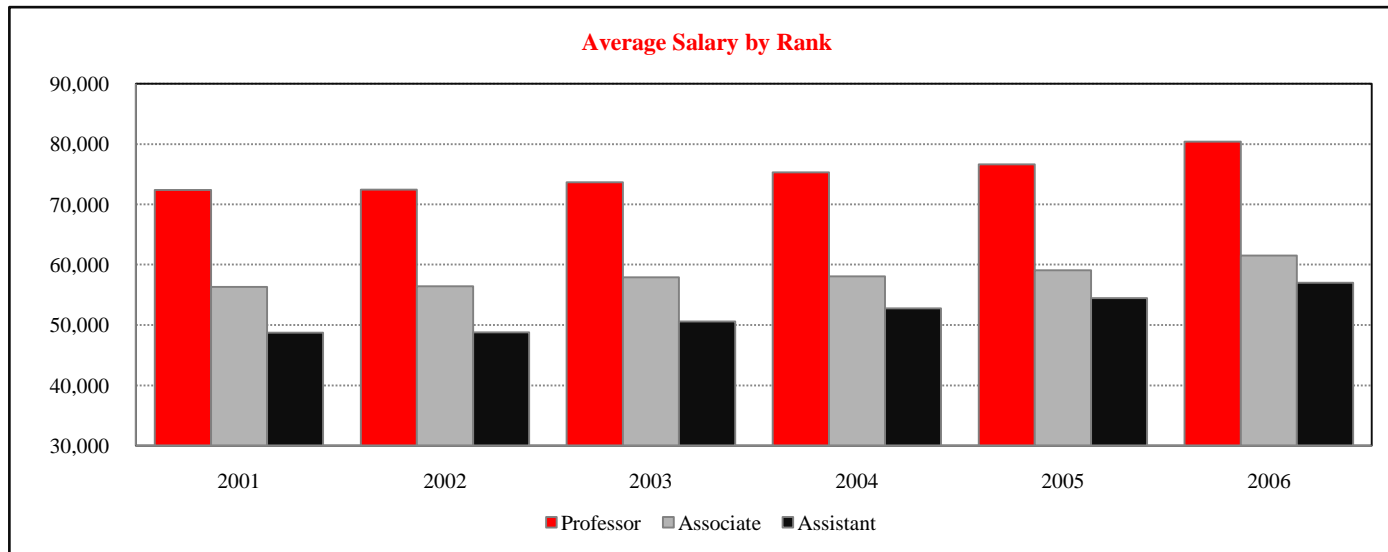
# FACULTY/STAFF

## AVERAGE ANNUAL SALARY ~ FALL 2001 THROUGH FALL 2006

Average Annual Salary for Tenured/Tenure Track Faculty<sup>1</sup>

<u>Faculty - Full-Time</u>	<u>Fall 2001</u>		<u>Fall 2002</u>		<u>Fall 2003</u>		<u>Fall 2004</u>		<u>Fall 2005</u>		<u>Fall 2006</u>	
	<u>Number</u>	<u>Average</u>	<u>Number</u>	<u>Average</u>	<u>Number</u>	<u>Average</u>	<u>Number</u>	<u>Average</u>	<u>Number</u>	<u>Average</u>	<u>Number</u>	<u>Average</u>
Professor	249	72,402	235	72,430	230	73,684	234	75,319	235	76,653	240	80,408
Associate Professor	180	56,306	177	56,414	183	57,909	197	58,090	210	59,101	223	61,514
Assistant Professor	260	48,725	284	48,818	289	50,618	277	52,749	245	54,485	228	57,041

<sup>1</sup>Data reported annually to American Association of University Professors.





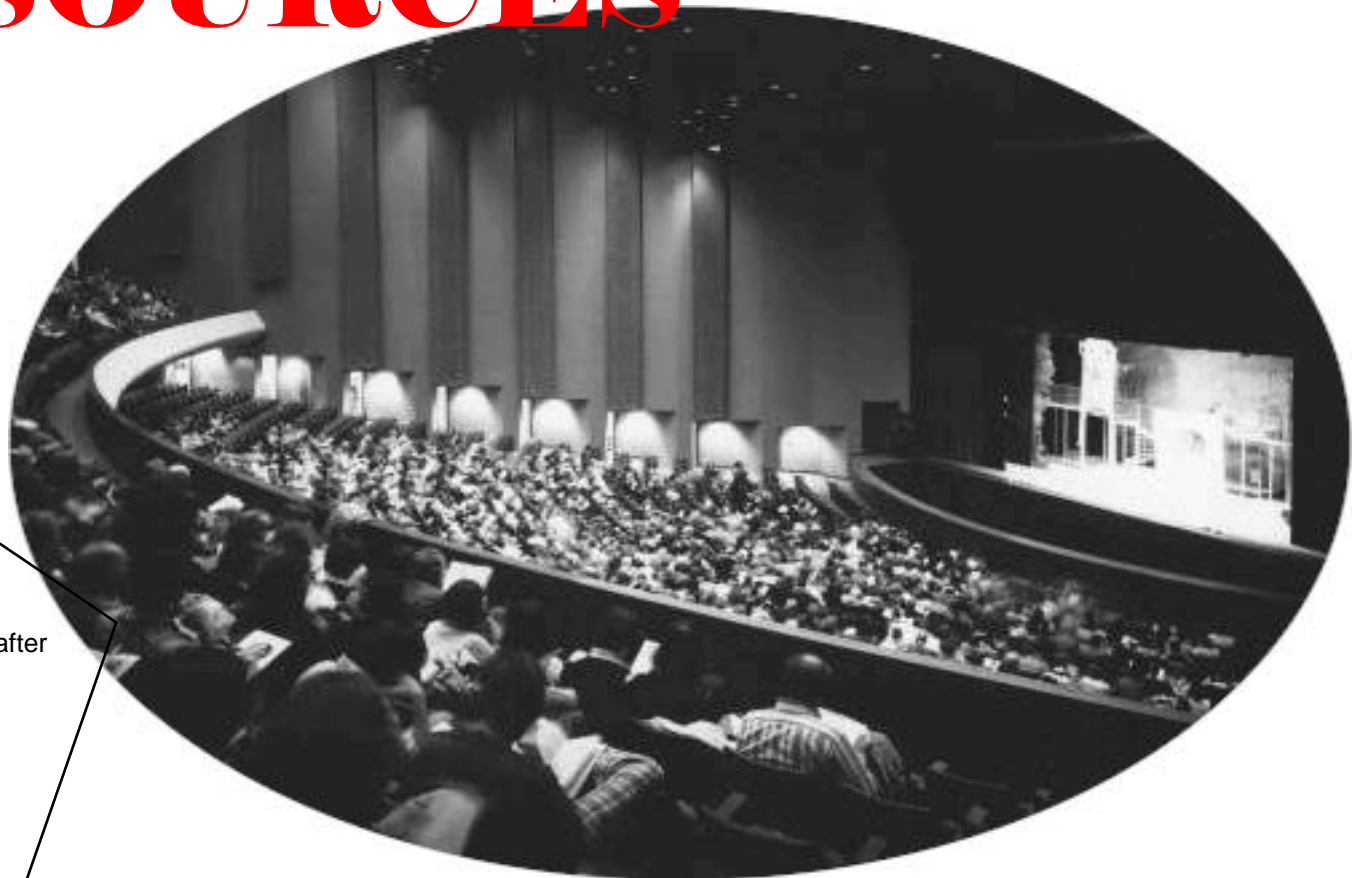


ILLINOIS STATE UNIVERSITY

# RESOURCES

DID YOU KNOW?

Braden Auditorium is named after Samuel J. Braden, who served as president from 1967 until 1970.



Braden Auditorium



# RESOURCES TOTAL EXPENDITURES & MANDATORY TRANSFERS ~ FISCAL YEARS 2003 through 2007

(Dollars in thousands)

	<u>Total Operating Funds by Fund Type</u>				
	<u>Fiscal Year 2003</u>	<u>Fiscal Year 2004</u>	<u>Fiscal Year 2005</u>	<u>Fiscal Year 2006</u>	<u>Fiscal Year 2007</u>
State Appropriated Tax Funds and					
University Income Fund	\$140,947.2	\$138,379.6	\$143,945.4	\$155,310.5	\$164,753.6
Gifts, Grants and Contracts	32,556.5	31,844.5	32,314.6	35,076.6	34,066.6
Agency	36,422.1	47,011.3	50,378.1	43,134.4	43,070.9
Bond Revenue/Other Auxiliary	48,213.1	45,921.3	46,087.9	49,947.0	51,076.8
Total <sup>1</sup>	\$258,138.9	\$263,156.7	\$272,726.0	\$283,468.5	\$292,967.9

	<u>State Appropriated Funds by Object Class</u>				
	<u>Fiscal Year 2003</u>	<u>Fiscal Year 2004</u>	<u>Fiscal Year 2005</u>	<u>Fiscal Year 2006</u>	<u>Fiscal Year 2007</u>
Personal Services	\$108,291.5	\$102,942.4	\$107,337.9	\$111,510.2	\$120,862.8
Contractual	14,077.1	16,673.9	16,800.0	20,967.5	18,604.6
Equipment and Books	5,669.9	6,129.5	6,395.4	8,320.9	8,026.7
Commodities	2,191.5	2,546.1	2,736.7	2,592.0	2,669.6
Other	6,447.6	5,782.5	6,310.7	7,479.3	9,946.1
Group Health Insurance	3,078.3	3,078.3	3,078.0	3,078.3	3,078.3
Medicare	1,191.3	1,227.0	1,286.7	1,362.3	1,565.5
Total	\$140,947.2	\$138,379.7	\$143,945.4	\$155,310.5	\$164,753.6

	<u>State Appropriated Funds by Functional Classification</u>				
	<u>Fiscal Year 2003</u>	<u>Fiscal Year 2004</u>	<u>Fiscal Year 2005</u>	<u>Fiscal Year 2006</u>	<u>Fiscal Year 2007</u>
Instruction	\$79,257.8	\$79,548.9	\$81,102.5	\$85,015.6	\$88,904.1
Operation and Maintenance	19,125.5	16,757.5	18,768.6	21,511.7	24,335.1
Institutional Support	15,307.1	14,543.4	14,947.2	16,363.0	18,148.4
Organized Research	1,809.3	2,483.9	2,553.4	2,980.8	1,887.1
Public Service	2,820.1	2,649.3	2,703.2	2,735.6	3,017.5
Academic Support	12,851.3	12,820.6	13,090.0	14,599.6	15,915.0
Student Services	5,506.5	5,270.7	6,415.5	7,663.6	7,902.6
Group Health Insurance	3,078.3	3,078.3	3,078.3	3,078.3	3,078.3
Medicare	1,191.3	1,227.0	1,286.7	1,362.3	1,565.5
Total	\$140,947.2	\$138,379.6	\$143,945.4	\$155,310.5	\$164,753.6

<sup>1</sup> Excludes payments made on behalf of the University (e.g. retirement contributions); \$35.1 million in FY03, \$103.6 million in FY04, \$43.8 million in FY05, \$42.2 million in FY06, and \$47.7 million in FY07.



# RESOURCES

## HISTORICAL APPROPRIATIONS ~ FISCAL YEARS 2004 through 2008

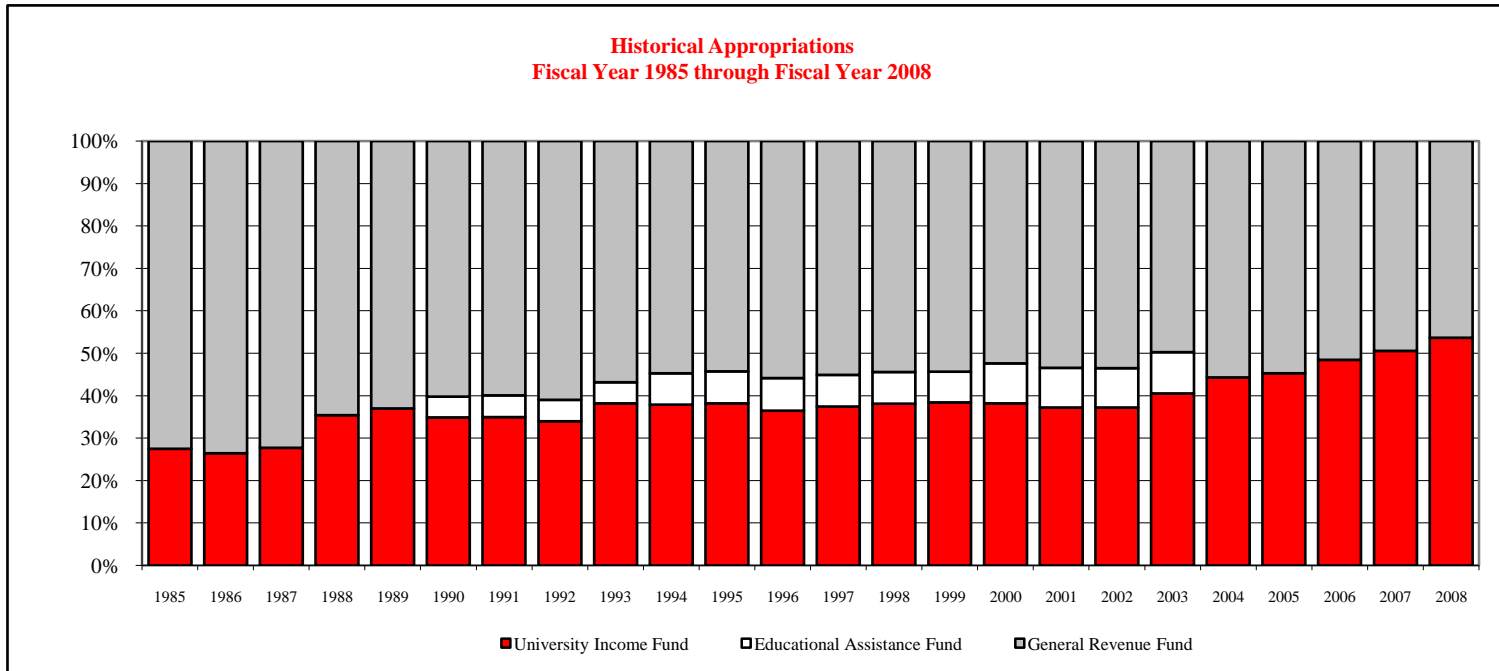
(dollars in thousands)

Historical Appropriations and University Income Fund for Operations and Grants by Fund Source<sup>1</sup>

	<u>Fiscal Year 2004</u>	<u>Fiscal Year 2005</u>	<u>Fiscal Year 2006</u>	<u>Fiscal Year 2007</u>	<u>Fiscal Year 2008</u>
General Revenue Fund	\$80,452.0 <sup>2</sup>	\$80,452.0	\$80,452.0	\$81,457.5	\$82,986.8
University Income Fund	63,985.8	66,676.0	75,580.2	83,280.7	96,206.9
<b>Total Appropriation</b>	<b>\$144,437.8</b>	<b>\$147,128.0</b>	<b>\$156,032.2</b>	<b>\$164,738.2</b>	<b>\$179,193.7</b>

<sup>1</sup> Excludes Retirement

<sup>2</sup> Original appropriation. Due to a mid-year rescission, the actual spending authority was \$78,904.5.







# RESOURCES

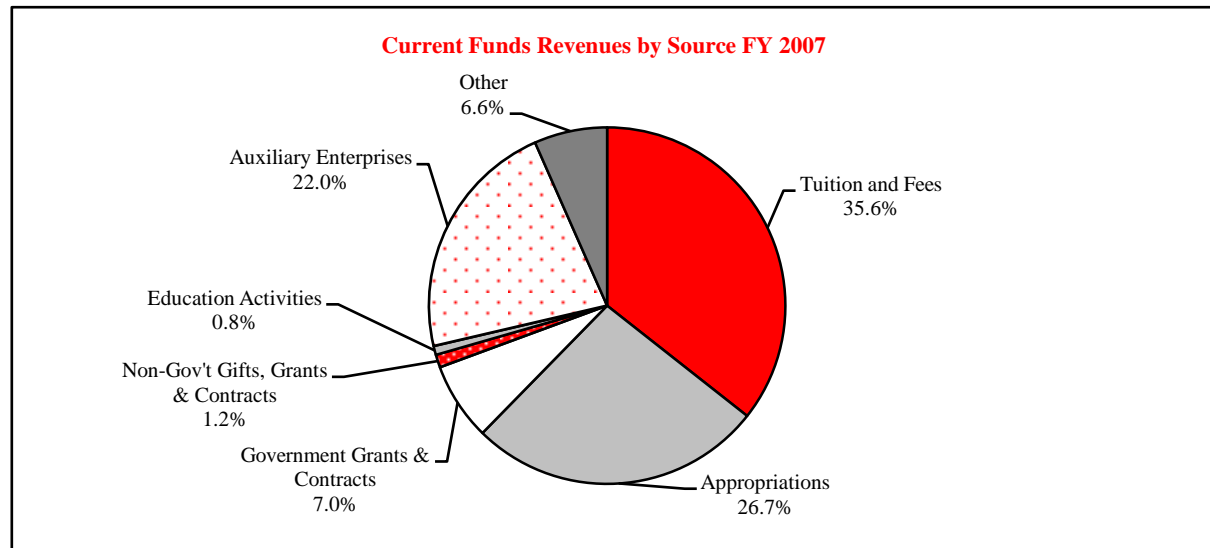
## CURRENT FUNDS REVENUES BY SOURCE ~ FISCAL YEARS 2006 AND 2007

<u>Source</u>	<u>Fiscal Year 2006</u>		<u>Fiscal Year 2007</u>	
	<u>Amount</u>	<u>Percent of Total</u>	<u>Amount</u>	<u>Percent of Total</u>
Tuition and Fees	\$95,396,990	33.1	\$108,622,959	35.6
State Government Tax Funds Appropriations	81,457,500	28.3	81,457,500	26.7
Government Grants and Contracts				
Federal	21,707,447	7.5	18,554,147	6.1
State	2,457,151	0.9	2,938,946	1.0
Non-Governmental Gifts, Grants and Contracts	3,192,260	1.1	3,568,867	1.2
Sales & Services of Education Activities	2,193,079	0.8	2,459,794	0.8
Sales & Services of Auxiliary Enterprises	61,863,707	21.5	67,175,847	22.0
Other Sources	19,679,899	6.8	20,192,587	6.6
Total	\$287,948,033 <sup>1</sup>	100.0%	\$304,970,647 <sup>2</sup>	100.0%

<sup>1</sup> Excludes \$43.8 million in Payments on Behalf of the University.

<sup>2</sup> Excludes \$42.2 million in Payments on Behalf of the University.

Source: Report of the Comptroller





# RESOURCES

## SPONSORED RESEARCH, INSTRUCTION, CREATIVE WORKS, & SERVICE

### Submissions (Proposals submitted between July 1 and June 30)

	Fiscal Year 2004 <sup>1</sup>		Fiscal Year 2005		Fiscal Year 2006		Fiscal Year 2007	
	Amount	Number	Amount	Number	Amount	Number	Amount	Number
Research	\$56,595,309	171	\$37,210,230	159	\$37,382,033	132	\$37,225,623	161
Instruction	16,575,958	120	15,497,255	90	9,086,459	107	8,883,901	89
Creativity	134,261	1	3,000	1	--	--	--	--
Public Service	5,031,998	36	10,659,302	34	3,878,898	40	13,999,692	53
Other	30,624,469	39	4,975,977	33	4,529,753	27	2,591,988	19
Total	\$108,961,995	367	\$68,345,764	317	\$54,877,143	306	\$62,701,204	322

### Awards (Approved between July 1 and June 30)

	Fiscal Year 2004 <sup>1</sup>		Fiscal Year 2005		Fiscal Year 2006		Fiscal Year 2007	
	Amount	Number	Amount	Number	Amount	Number	Amount	Number
Research	\$6,081,302	82	\$6,418,946	98	\$7,638,262	89	\$6,893,719	81
Instruction	7,675,333	148	3,278,838	100	5,859,754	94	4,815,984	91
Creativity	138,771	2	--	--	--	--	--	--
Public Service	4,653,571	60	2,890,754	33	2,935,127	42	4,037,888	45
Other	2,020,271	27	7,793,624	31	2,703,835	25	2,347,904	17
Total	\$20,569,248	319	\$20,382,162	262	\$19,136,978	250	\$18,095,495	234

### Awards by Type of Funding

	Fiscal Year 2004 <sup>1</sup>		Fiscal Year 2005		Fiscal Year 2006		Fiscal Year 2007	
	Amount	Percent	Amount	Percent	Amount	Percent	Amount	Percent
Federal Awards	\$9,306,694	45.2	\$11,006,392	54.0	\$9,342,249	48.8	\$6,791,781	37.5
Federal Flow-through	2,357,811	11.5	3,141,919	15.4	2,287,440	12.0	2,636,180	14.6
State Awards	4,473,942	21.8	2,976,389	14.6	4,609,945	24.1	3,707,312	20.5
Corporate Awards	899,805	4.4	128,706	0.6	141,500	0.7	404,530	2.2
Other Awards	3,530,996	17.2	3,128,756	15.4	2,755,844	14.4	4,555,692	25.2
Total Awards	\$20,569,248	100.0	\$20,382,162	100.0	\$19,136,978	100.0	\$18,095,495	100.0

<sup>1</sup> Includes Conference Services contracts.

*Educating Illinois 2003-2010* calls for the University to increase the number of external grant and contract submissions to 400 and the value of external contracts and awards to \$30 million.

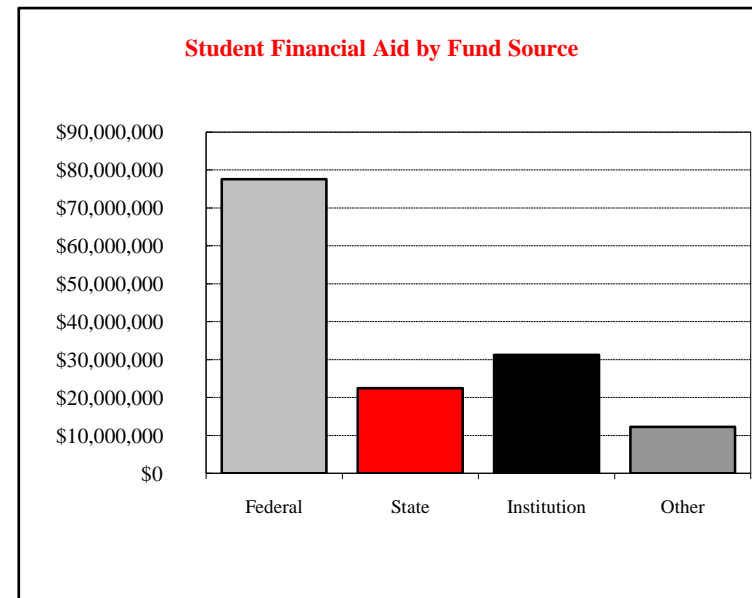
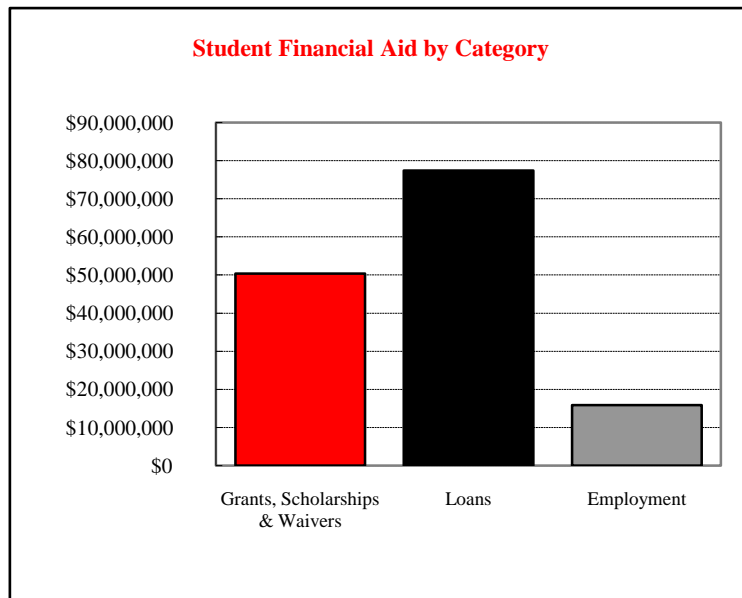


# RESOURCES

## STUDENT FINANCIAL AID & INSTITUTIONAL SUPPORT ~ FISCAL YEAR 2007<sup>1</sup>

Type	Fund Source				Total	Number of Students Receiving Each Type of Aid
	Federal	State	Institution	Other		
Grants, Scholarships & Waivers	\$9,753,146	\$22,446,561	\$16,167,373	\$1,961,885	\$50,328,965	13,680
Loans	\$67,043,021	--	--	\$10,288,904	\$77,331,925	10,514
Employment	\$749,697	--	\$15,086,750	--	\$15,836,447	6,341
Total	\$77,545,864	\$22,446,561	\$31,254,123	\$12,250,789	\$143,497,337	

Approximately 74.4 percent of all students who attend the University receive assistance through loans, scholarships, tuition waivers, grants, and employment.



<sup>1</sup> The Financial Aid Fiscal Year is Fall, Spring and Summer.



# RESOURCES

## Resident

School Year	Tuition Plan <sup>1</sup>	Per Credit Hour	
		Tuition Rate	Required Fees
2004-05	New <sup>2</sup>	\$160.00	\$43.20
	Continuing	137.43	40.57
2005-06	New <sup>2</sup>	180.00	46.70
	Continuing 2 Yr	160.00	43.20
	Continuing 3+ Yr	137.43	40.57
2006-07	New <sup>2</sup>	205.00	52.45
	Continuing 2 Yr	180.00	46.70
	Continuing 3 Yr	160.00	43.20
	Continuing 4+ Yr	137.43	40.57
2007-08	New <sup>2</sup>	233.00	56.91
	Continuing 2 Yr	205.00	52.45
	Continuing 3 Yr	180.00	46.70
	Continuing 4 Yr	160.00	43.20
	Continuing 5+ Yr	137.43	40.57

## Non-Resident

School Year	Tuition Plan <sup>1</sup>	Per Credit Hour	
		Tuition Rate	Required Fees
2004-05	New <sup>2</sup>	\$334.00	\$43.20
	Continuing	286.43	40.57
2005-06	New <sup>2</sup>	376.00	46.70
	Continuing 2 Yr	334.00	43.20
	Continuing 3+ Yr	286.43	40.57
2006-07	New <sup>2</sup>	428.00	52.45
	Continuing 2 Yr	376.00	46.70
	Continuing 3 Yr	334.00	43.20
	Continuing 4+ Yr	286.43	40.57
2007-08	New <sup>2</sup>	477.00	56.91
	Continuing 2 Yr	428.00	52.45
	Continuing 3 Yr	376.00	46.70
	Continuing 4 Yr	334.00	43.20
	Continuing 5+ Yr	286.43	40.57

# UNDERGRADUATE STUDENT TUITION & FEE RATES

## Full-Time (based on 15 credit hours per semester) Annual

Insurance required of all students			
taking 9 or more credit hours	Tuition	Required Fees	Total
\$232.00	\$4,800.00	\$1,296.00	\$6,328.00
232.00	4,122.90	1,217.10	5,572.00
290.00	5,400.00	1,401.00	7,091.00
290.00	4,800.00	1,296.00	6,386.00
290.00	4,122.90	1,217.10	5,630.00
316.00	6,150.00	1,573.50	8,039.50
316.00	5,400.00	1,401.00	7,117.00
316.00	4,800.00	1,296.00	6,412.00
316.00	4,122.90	1,217.10	5,656.00
322.00	6,990.00	1,707.30	9,019.30
322.00	6,150.00	1,573.50	8,045.50
322.00	5,400.00	1,401.00	7,123.00
322.00	4,800.00	1,296.00	6,418.00
322.00	4,122.90	1,217.10	5,662.00

## Full-Time (based on 15 credit hours per semester) Annual

Insurance required of all students			
taking 9 or more credit hours	Tuition	Required Fees	Total
\$232.00	\$10,020.00	\$1,296.00	\$11,548.00
232.00	8,592.90	1,217.10	10,042.00
290.00	11,280.00	1,401.00	12,971.00
290.00	10,020.00	1,296.00	11,606.00
290.00	8,592.90	1,217.10	10,100.00
316.00	12,840.00	1,573.50	14,729.50
316.00	11,280.00	1,401.00	12,997.00
316.00	10,020.00	1,296.00	11,632.00
316.00	8,592.90	1,217.10	10,126.00
322.00	14,310.00	1,707.30	16,339.30
322.00	12,840.00	1,573.50	14,735.50
322.00	11,280.00	1,401.00	13,003.00
322.00	10,020.00	1,296.00	11,638.00
322.00	8,592.90	1,217.10	10,132.00

<sup>1</sup> Guaranteed tuition and fees (insurance not included) freeze began in fall 2003; the number of years tuition will remain frozen depends on primary major/sequence carried on the last day of the last undergraduate semester attended within the four continuous calendar years after being classified as enrolled as a degree-seeking student.

<sup>2</sup> New - Students enrolled for their first semester in a degree-seeking program and in attendance on census day.



# RESOURCES

## GRADUATE STUDENT TUITION & FEE RATES

### Resident

<u>School Year</u>	<u>Tuition Plan</u>	<u>Per Credit Hour</u>	
		<u>Tuition Rate</u>	<u>Required Fees</u>
2000-01	All	\$108.30	\$39.20
2001-02	All	112.14	40.57
2002-03 <sup>2</sup>	All	122.49	40.57
2003-04	New <sup>1</sup>	138.43	40.57
	Continuing	122.49	40.57
2004-05	All	145.00	43.20
2005-06	All	170.00	46.70
2006-07	All	185.00	52.45
2007-08	All	194.00	56.91

### Non-Resident

<u>School Year</u>	<u>Tuition Plan</u>	<u>Per Credit Hour</u>	
		<u>Tuition Rate</u>	<u>Required Fees</u>
2000-01	All	\$324.90	\$39.20
2001-02	All	245.00	40.57
2002-03 <sup>2</sup>	All	265.00	40.57
2003-04	New <sup>1</sup>	288.43	40.57
	Continuing	265.00	40.57
2004-05	All	303.00	43.20
2005-06	All	355.00	46.70
2006-07	All	386.00	52.45
2007-08	All	404.00	56.91

### Full-Time (based on 9 credit hours per semester) Annual

Insurance required of all students			
<u>taking 9 or more credit hours</u>	<u>Tuition</u>	<u>Required Fees</u>	<u>Total</u>
\$176.00	\$1,949.40	\$705.60	\$2,831.00
172.00	2,018.52	730.26	2,920.78
180.00	2,204.82	730.26	3,115.08
190.00	2,491.74	730.26	3,412.00
190.00	2,204.82	730.26	3,125.08
232.00	2,610.00	777.60	3,619.60
290.00	3,060.00	840.60	4,190.60
316.00	3,330.00	944.10	4,590.10
322.00	3,492.00	1,024.38	4,838.38

### Full-Time (based on 9 credit hours per semester) Annual

Insurance required of all students			
<u>taking 9 or more credit hours</u>	<u>Tuition</u>	<u>Required Fees</u>	<u>Total</u>
\$176.00	\$5,848.20	\$705.60	\$6,729.80
172.00	4,410.00	730.26	5,312.26
180.00	4,770.00	730.26	5,680.26
190.00	5,191.74	730.26	6,112.00
190.00	4,770.00	730.26	5,690.26
232.00	5,454.00	777.60	6,463.60
290.00	6,390.00	840.60	7,520.60
316.00	6,948.00	944.10	8,208.10
322.00	7,272.00	1,024.38	8,618.38

<sup>1</sup> New - Students enrolled for their first semester in a degree-seeking program and in attendance on census day.

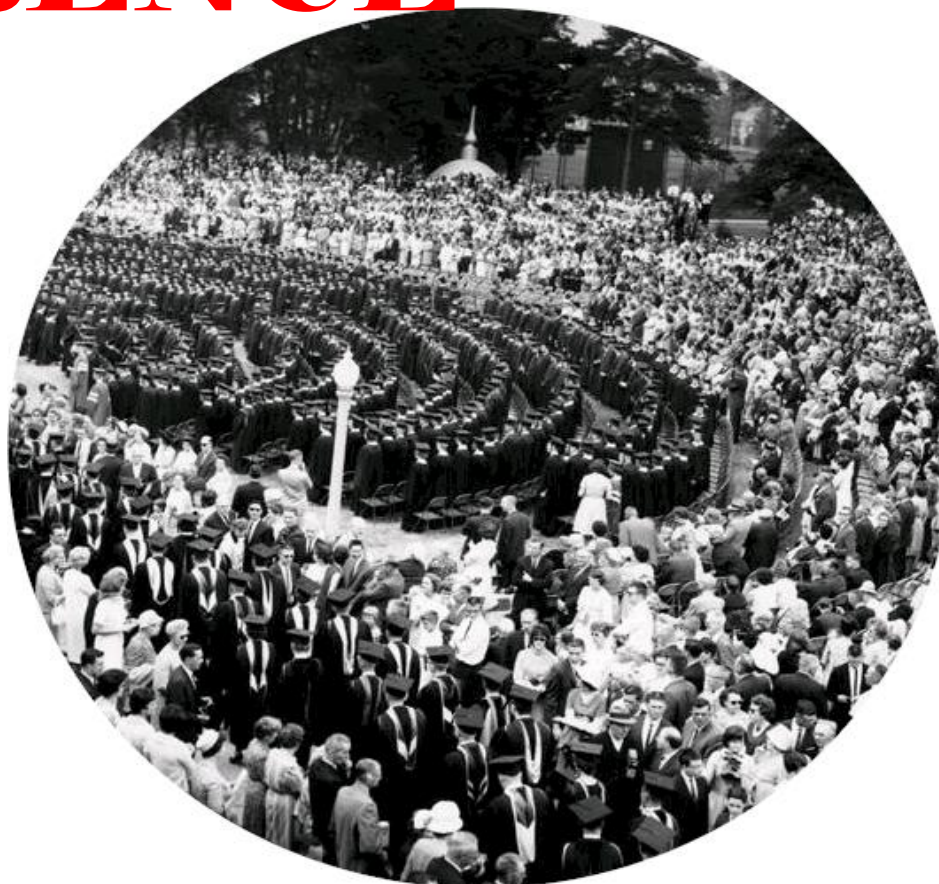
<sup>2</sup> Prior to fall 2002 fees were capped at 12 hours per semester; Beginning in fall 2002 fees charged for each credit hour up to and including 16 hours per semester - no additional fees charged for credit hours in excess of 16 hours per semester.





ILLINOIS STATE UNIVERSITY

# REFERENCE



## DID YOU KNOW?

The first commencement ceremony was held in 1860 for a graduating class of 10.

Commencement was scheduled outdoors from 1834 to 1979.

The University has 168,946 living alumni.

Commencement in the outdoor amphitheatre 1963



# REFERENCE

CIP	Program	B.A.	B.S.	B.S. Ed.	B.M. Ed.	B.S.W.	B.F.A.	B.M.
01.0000	Agriculture		x					
01.0102	Agribusiness		x					
09.0101	Communication Studies	x	x					
09.0102	Mass Communication	x	x					
09.0401	Journalism	x	x					
09.0902	Public Relations	x	x					
11.0103	Information Systems		x					
11.0701	Computer Science		x					
11.0901	Telecommunications Management		x					
13.1001	Special Education		x	x				
13.1202	Elementary Education		x	x				
13.1203	Middle Level Teacher Education		x	x				
13.1209	Early Childhood Education		x	x				
13.1303	Business Teacher Education	x	x	x				
13.1307	Health Education		x	x				
13.1309	Technology Education		x					
13.1312	Bachelor of Music Education				x			
13.1314	Physical Education	x	x	x				
13.1318	Social Sciences Education	x	x					
15.0503	Renewable Energy		x					
15.0612	Industrial Technology		x					
16.0501	German	x						
16.0901	French	x						
16.0905	Spanish	x						
19.0101	Family and Consumer Sciences	x	x					
23.0101	English	x						
24.0101	Interdisciplinary Studies	x	x					
24.0102	University Studies	x	x					
26.0101	Biological Sciences		x					
26.0202	Biochemistry and Molecular Biology		x					
27.0101	Mathematics	x	x					
31.0301	Recreation and Park Administration		x					
31.0505	Exercise Science		x					
38.0101	Philosophy	x						

# UNDERGRADUATE PROGRAM INVENTORY ~ FALL 2007

CIP	Program	B.A.	B.S.	B.S. Ed.	B.M. Ed.	B.S.W.	B.F.A.	B.M.	B.S.N.
40.0501	Chemistry		x						
40.0601	Geology		x						
40.0801	Physics		x						
42.0101	Psychology	x	x						
43.0104	Criminal Justice Sciences	x	x						
44.0701	Bachelor of Social Work				x				
45.0201	Anthropology	x	x						
45.0601	Economics	x	x						
45.0701	Geography	x	x						
45.1001	Political Science	x	x						
45.1101	Sociology	x	x						
50.0501	Theatre	x	x						
50.0701	Art	x	x						
50.0702	B.F.A. in Art						x		
50.0901	Music (Liberal Arts)	x	x						
50.0903	Music Performance							x	
50.9999	Arts Technology	x	x						
51.0204	Speech Pathology and Audiology		x						
51.0706	Health Information Management		x						
51.0913	Athletic Training		x						
51.1005	Clinical Laboratory Science		x						
51.1601	Nursing								x
51.2202	Environmental Health		x						
51.2206	Safety		x						
52.0201	Business Administration		x						
52.0301	Accountancy		x						
52.0801	Finance		x						
52.1101	International Business	x	x						
52.1201	Business Information Systems		x						
52.1301	Management		x						
52.1401	Marketing		x						
52.1701	Insurance		x						
54.0101	History	x	x						





# REFERENCE

# GRADUATE PROGRAM INVENTORY ~ FALL 2007

## Masters Level

CIP	Program	M.A.	M.S.	M.S.Ed.	M.M.Ed.	M.S.W.	M.F.A.	M.W.N.	M.M.	M.B.A.	M.S./M.P.A.
01.0102	Agribusiness	x									
09.0101	Communication	x	x								
11.0103	Information Systems	x									
13.0301	Curriculum and Instruction	x	x								
13.0401	Educational Administration	x	x								
13.0501	Instructional Tech. & Design	x									
13.1001	Special Education	x	x								
13.1102	College Student Personnel Admin.	x									
13.1312	Master of Music Education			x							
13.1315	Reading		x								
15.0612	Technology	x									
16.0101	Languages, Literatures, & Cultures	x									
19.0101	Family and Consumer Sciences	x	x								
23.0101	English	x	x								
23.0401	Writing	x	x								
26.0101	Biological Sciences		x								
27.0101	Mathematics		x								
31.0501	Kinesiology and Recreation		x								
40.0501	Chemistry		x								
40.0699	Hydrogeology		x								
42.0101	Psychology	x	x								
42.0601	Clinical-Counseling Psychology	x	x								
43.0104	Criminal Justice Sciences	x	x								
44.0701	Master of Social Work				x						
45.0301	Historical Archaeology	x	x								
45.0601	Applied Economics	x	x								
45.1001	Political Science	x	x								
45.1101	Sociology	x	x								
50.0501	Theatre	x	x								
50.0501	M.F.A. in Theatre					x					
50.0701	Art	x	x								
50.0702	M.F.A. in Art					x					
50.0901	Master of Music							x			

## Masters Level

CIP	Program	M.A.	M.S.	M.S.Ed.	M.M.Ed.	M.S.W.	M.F.A.	M.S.N.	M.M.	M.B.A.	B.S./M.P.A.
50.9999	Arts Technology		x								
51.0204	Speech Pathology and Audiology	x	x								
51.1605	Nursing						x				
52.0201	Business Administration								x		
52.0301	Master of Professional Accountancy										x
52.0301	Accountancy		x								
54.0101	History	x	x								

## IBHE Approved Certificate Level

CIP	Program	P.B.	P.M.	S.S.P.	P.M.F.N.P.
13.0301	Alt. Route for Sec. Teacher Certification	x			
23.0401	Teaching of Writing High/Middle School	x			
13.0402	Director of Special Education		x		
13.0409	Education Admin. & General Admin.		x		
13.0411	Education Admin. & Superintendent		x		
13.0499	Educ. Adm. & Chief School Bus. Official		x		
42.1701	School Psychology			x	
51.1605	Family Nurse Practitioner				x

## Doctoral Level

CIP	Program	D.A.	Ed.D.	Ph.D.
13.0301	Curriculum and Instruction		x	
13.0401	Educational Administration		x	x
13.1001	Special Education		x	
13.1311	Mathematics Education			x
23.0101	English Studies			x
26.0101	Biological Sciences			x
42.1701	School Psychology			x
51.0204	Audiology	x		



# REFERENCE

# PEER INSTITUTIONS

## Illinois Board of Higher Education Comparison Group

Institution	State
University of Alabama, Birmingham	AL
Northern Arizona University	AZ
University of California, Santa Cruz	CA
University of Northern Colorado	CO
Florida Atlantic University	FL
University of South Florida	FL
Georgia State University	GA
Illinois State University	IL
Ball State University	IN
Indiana State University, Terre Haute	IN
Indiana University, Indianapolis	IN
University of Louisville	KY
University of New Orleans	LA
Western Michigan University	MI
University of Missouri, Kansas City	MO
University of Southern Mississippi	MS
University of North Carolina, Greensboro	NC
Rutgers University, Camden Campus	NJ
SUNY at Albany	NY
Cleveland State University	OH
Ohio University, Athens	OH
University of Toledo	OH
University of South Dakota, Vermillion	SD
University of Memphis	TN
Texas A & M University, Commerce	TX
Texas Woman's University	TX
University of Houston, University Park	TX
University of North Texas	TX
University of Texas, Dallas	TX
University of Wisconsin, Milwaukee	WI

## Illinois Board of Higher Education Subset

Institution	State
Northern Arizona University	AZ
University of Northern Colorado	CO
Florida Atlantic University	FL
Georgia State University	GA
Illinois State University	IL
Ball State University	IN
Indiana State University, Terre Haute	IN
University of New Orleans	LA
Western Michigan University	MI
University of Southern Mississippi	MS
University North Carolina, Greensboro	NC
Cleveland State University	OH
University of Toledo	OH
University of Memphis	TN
Texas A & M University, Commerce	TX
University of North Texas	TX

## Benchmark Group used for most Comparison Studies

Institution	State
University of California, Riverside	CA
University of California, Santa Cruz	CA
Ball State University	IN
University of North Carolina, Greensboro	NC
Bowling Green State University	OH
Miami University	OH
Clemson University	SC
University of Wisconsin, Milwaukee	WI



# REFERENCE

## UNIVERSITY DEFINITIONS

### STUDENT TERMS

**Census Day:** The University's official date for enrollment. The first day of class following the 10<sup>th</sup> day of class in each semester.

**Certificates:** Illinois State University currently offers three types of certificates at the graduate level:

- **Graduate Certificate:** Requires a minimum of nine but no more than 17 semester hours of graduate courses beyond the bachelor's degree. This type of certificate is **not** approved/reviewed by the Illinois Board of Higher Education (IBHE).
- **Post-Baccalaureate Graduate Certificate:** Requires a minimum of 18 semester hours of graduate courses beyond the baccalaureate degree, but less than required for a masters' degree. This type of certificate is approved/reviewed by the IBHE.
- **Post-Master's Graduate Certificate:** Requires a minimum of 24 semester hours of graduate courses beyond the master's degree but less than a doctoral degree. This type of certificate is approved/reviewed by the IBHE.

**CIP Codes:** Classification of Instructional Programs (CIP) A federal coding system used to provide a taxonomic scheme that will support the accurate tracking, assessment, and reporting of fields of study and program completions activity.

**Cohort:** The number of new beginning freshmen in a given fall semester. Used in calculating retention of students returning for their second fall semester and in calculating University graduation rates.

**Credit Hour:** A standard unit of measuring course work; credit hours are assigned to a particular course and count toward graduation.

**Degree Program:** A program which has specific requirements and number of credits, including a common core for all students seeking a particular degree. Degree programs are approved through a curricular process through the Illinois Board of Higher Education.

**Full-Time Enrollment:** For undergraduate students – 12 or more credit hours; for graduate students nine or more credit hours per semester.

**Full-Time Equivalent (FTE):** Total number of credit hours divided by 15 for undergraduate students; and by nine for graduate students.

**Grade Point Average (GPA):** The total number of grade points divided by the total graded semester hours attempted at Illinois State University.

**Graduation Rate:** Total number of new beginning freshmen students who complete their degree within 6 years of normal time divided by the number in the original cohort.

**Headcount:** The count of each student enrolled at the University.

**Interdisciplinary:** A program or course that spans two or more academic disciplines.

**Major or Program:** A cohesive combination of courses, including introductory, intermediate, and advanced course work, that designates a student's primary area of specialization.

**Minorities:** Includes American Indian/Native Alaskan, Black/Non-Hispanic, Asian/Pacific Islander, and Hispanic racial/ethnic designations. Non-Resident Alien is not included as a minority.

**Native Students:** Students who start as new beginning freshmen at Illinois State University.

**New Beginning Freshmen:** First-time, first year students who have not attended any college since graduating from high school (includes students who attend a college or university the summer after high school graduation, students with advanced placement credits, and students who took courses for college credit while attending high school).

**New Students:** Students attending Illinois State University for the first time (Illinois State University baccalaureate recipients entering their first semester working on a second bachelor's degree are considered readmitted students).

**Non-Degree Seeking:** A student who has not been admitted to a program leading toward a degree; these include unclassified students, students-at-large, and students working toward a non-IBHE approved/reviewed graduate certificate.

**Non-Resident:** A student whose principal residence is not in Illinois.



# REFERENCE

## UNIVERSITY DEFINITIONS

### STUDENT TERMS (CONTINUED)

**Non-Resident Alien:** International students who are neither a citizen nor a permanent resident of the United States.

**On-and Off-Campus:** Students are considered "off-campus" if all of their courses meet at a location other than a University facility; they are considered an "on-campus" student if any or all of their courses meet at a University facility.

**Retention Rate:** Number of new beginning freshmen who return for their second fall semester divided by the original cohort.

**Semester:** A semester at Illinois State is the 16-week academic session offered each fall and spring. The summer session is not considered a semester.

**Show Rate:** Ratio of students who enrolled compared to the number who were accepted.

**Transfer Student:** Students who previously attended one or more semesters at a community or four-year college after graduating from high school (whether or not any course work was completed).

**Unclassified Students:** A person who desires to take classes at the University without working toward a specific degree.

**Yield Rate:** Ratio of the number of students who were accepted compared to the number of students that applied.

### EMPLOYEE TERMS

**Administrative/Professional:** Appointments primarily for the purpose of mission support and include a wide range of responsibilities.

- Administrative (A):** Employees with primary executive, administrative and managerial assignments. These assignments involve planning, organizing, managing and directing the university and its sub units with a reporting line of three levels from the President and a salary level of 55.

- Managerial (M):** These employees are considered to be primary policy decision making administrators who report directly to the President or to one of the Vice Presidents of the University. This group would include the President, Vice Presidents, Deans and Associate Vice Presidents.

- Professional (P):** All Administrative/Professional employees who are not designated as Administrative (A) or Managerial (M).

**Civil Service:** Civil Service positions are governed by the State Universities Civil Service System. Candidates must demonstrate their ability to perform by passing a test specifically designed for the job. Areas of Civil Service employment include professional, technical, clerical, crafts and service. The civil service system has four classifications of employees:

- Exempt:** Excluded from overtime provisions of the Fair Labor Standards Act; typically managers and administrators.

- Non-Exempt:** Paid by the hour and eligible for overtime under provisions of the Fair Labor Standards Act.

- Negotiated:** Civil Service employees belonging to a union with a negotiated contract.

- Extra Help:** Hired to work without benefits for a limited time (up to 900 hours) and without requirement of a civil service examination.

**Emeritus:** Retired faculty with rank who continue employment at Illinois State University are accorded the privilege of retaining their professorial title after retirement with the added designation of the word "emeritus" or "emerita."

**Faculty:** Any Tenure-Track or Non-Tenure Track appointment, ranked or unranked, for the purpose of instruction, organized research, and/or public service in one of the academic (credit hour producing) departments and related areas.

**Departmental:** Faculty teaching in an academic department.

**Non-departmental:** Faculty in a non-academic department such as University College instructors.

**Lab School Associates:** Appointments that do not hold rank in an academic department and are assigned primarily to Thomas Metcalf School or University High School.

**Library Faculty:** Hold academic rank and are assigned primarily to the Library.



# REFERENCE

## UNIVERSITY DEFINITIONS

### EMPLOYEE TERMS (CONTINUED)

**Full-time:** A work schedule of 37.5 to 40 hours per week; considered to be 100 percent.

**Minorities:** Includes American Indian/Native Alaskan, Black Non-Hispanic, Asian/Pacific Islander, and Hispanic racial/ethnic designations. Non-Resident Alien is not included as a minority.

**Non-Tenure Track:** Appointments for full and part-time appointments are for a specific purpose and for a specified period of time appropriate to that purpose. No time served in any of the non-tenure track titles counts toward fulfillment of a probationary period leading to tenure.

**Part-time:** A work schedule of less than 100 percent.

**Tenure:** Tenure is an important means of protecting the rights of members of the faculty to freedom of inquiry, research, discourse, teaching, learning and publications. Tenure entails the faculty member's obligation to strive continuously to improve competence and to cooperate with colleagues in an effort to improve the quality of scholarship and teaching at the institution. The freedom and security provided through academic tenure are fundamental to the success of a university in fulfilling its obligations. After the expiration of a probationary period, faculty have permanent or continuous tenure, and their service should be terminated only for adequate cause, except in the case of retirement for age, or under extraordinary circumstances because of financial exigencies.

**Tenured/Tenure Track:** Tenure is granted by the University under the authority granted to the President by the Board of Trustees. Tenure appointments are held only in academic departments or similar academic units.

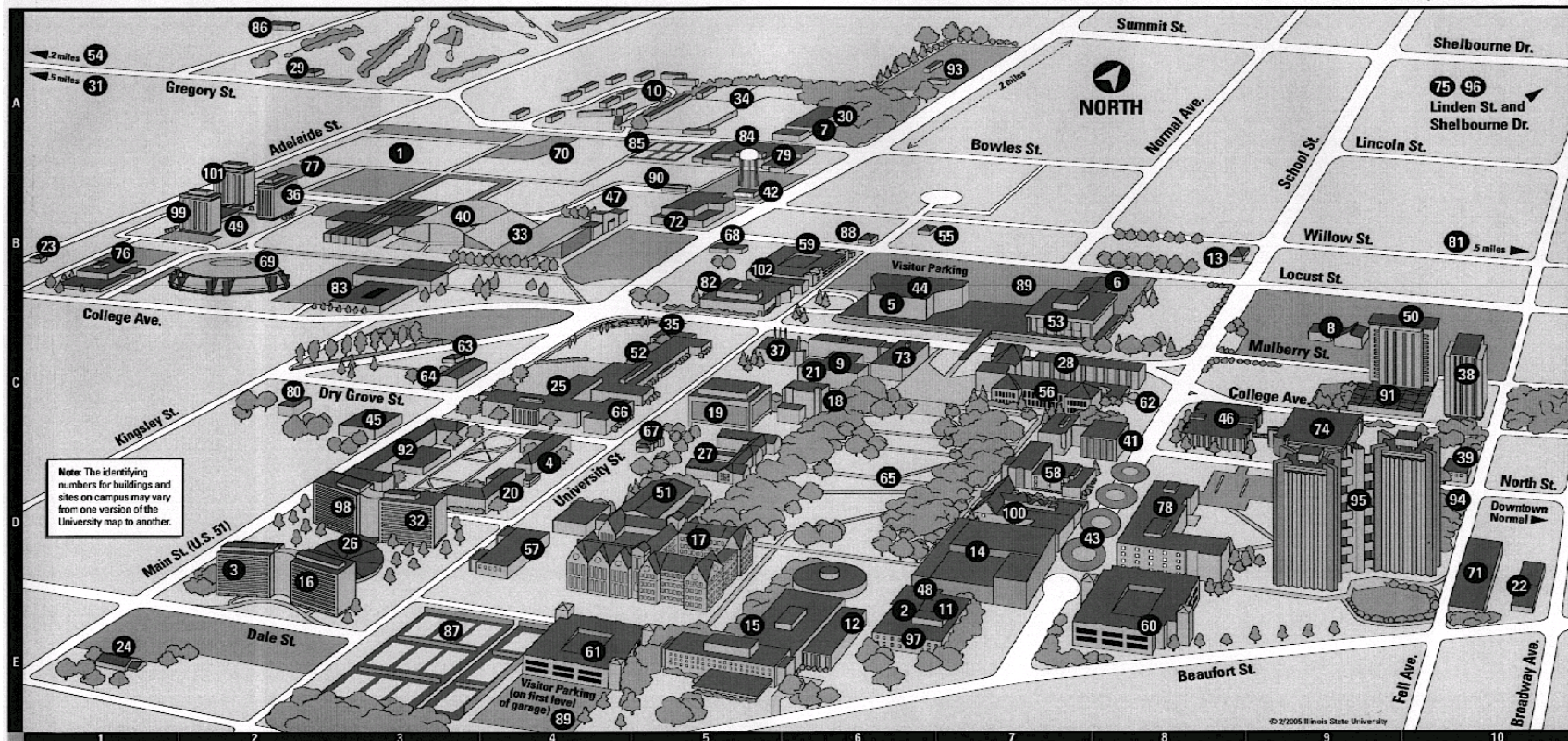
**Rank:** The academic ranks that are conferred for tenure at Illinois State University are: Professor, Associate Professor, and Assistant Professor. Promotion within the academic ranks is recommended by the Provost to the President for approval.

### OTHER TERMS

**IBHE:** Illinois Board of Higher Education, the statewide planning and coordinating board for higher education institutions in Illinois, approves/reviews degree programs, provides budget recommendations to the Governor and General Assembly, administers a variety of grant programs, approves operating authority for independent institutions, and maintains comprehensive high education databases.

**IPEDS:** The Integrated Postsecondary Education Data System conducted by National Center of Education Statistics (NCES). IPEDS began in 1986 and involves annual data collections. Survey data are required from all postsecondary institutions that have a Program Participation Agreement (PPA) with the Office of Postsecondary Education, U.S. Department of Education. IPEDS also requests limited data from approximately 3,000 other schools offering postsecondary education programs.

# CAMPUS MAP



- |   |   |   |   |  |
|---|---|---|---|--|
| 1 Adelaide Soccer Field - A3                                      | 22 Extended University - E10                        | 43 In Exchange - D8                                     | 64 Professional Development Building - C3                       | 85 University High School Tennis Courts - A5             |
| 2 Allen Theatre - E6  | 23 Eyestone School Museum - B1                      | 44 InfoCentre - B8                                      | 65 Quad - D6  | 86 University (President's) Residence - A2               |
| 3 Atkin Hall (ATK) - D2   | 24 Facilities Planning Building - E1                | 45 Instructional Technology and Development Center - C3 | 66 Rachel Cooper (RC) - C4                                      | 87 University Street Tennis Courts - E3                  |
| 4 Barton Hall - D4  | 25 Fairchild Hall (FH) - C4                         | 46 Julian Hall (JH) - C8                                | 67 Rambo House - C5   | 88 Vidette Building - B6                                 |
| 5 Bone Student Center/Braden Auditorium - B6                      | 26 Feeney Dining Center - D3                        | 47 Kaufman Football Building - B4                       | 68 Recreation Services Building - B5                            | 89 Visitor Parking - B7 and E4                           |
| 6 Bowling & Billiards Center (BBC) - B8                           | 27 Fell Hall (FEL) - C5                             | 48 Kamp Recital Hall - E6                               | 69 Redbird Arena (RBA) - B2                                     | 90 Vitro Center (VIT) - B5                               |
| 7 Campus Dining Services - A6                                     | 28 Felmley Hall of Science (FSA, FHS) - C8          | 49 Links Dining Center (LIN) - B2                       | 70 Redbird Baseball Field - A4                                  | 91 Vrooman Dining Center (VRO) - C9                      |
| 8 Campus Religious Center - C9                                    | 29 Golf Course, Illinois State University (GC) - A3 | 50 Manchester Hall - C10                                | 71 Research Services Building - D10                             | 92 Walker Hall (WAL) - C3                                |
| 9 Capen Auditorium - C6   | 30 Green Food Service Building, John - A6           | 51 McCormick Hall (MCH) - D5                            | 72 Ropp Agriculture Building (RAB) - B5                         | 93 Waller Parking and Transportation Building, Bill - A7 |
| 10 Cardinal Court - A5  | 31 Gregory Street Property - A1                     | 52 Metcalf School, Thomas (MLS) - C5                    | 73 Schroeder Hall (SCH) - C6                                    | 94 Watterson Dining Center (WD) - D10                    |
| 11 Centennial East (CE) - E7                                      | 32 Hamilton Hall - D3                               | 53 Milner Library (MLB) - C7                            | 74 Science Laboratory Building (SLB) - C9                       | 95 Watterson Towers - D9                                 |
| 12 Centennial West (CW) - E6                                      | 33 Hancock Stadium - B4                             | 54 Motorcycle Library (MLB) - C7                        | 75 Shelbourne Apartments - A10                                  | 96 Wellness House - A10                                  |
| 13 Center for Intercultural Relations - B8                        | 34 Harris Physical Plant, Carter - A5               | 55 Motorcycle Driving Range - A1                        | 76 Smith Building, Nelson (NSB) - B1                            | 97 Washoff Theatre - E6                                  |
| 14 Center for the Performing Arts - D7                            | 35 Hayden Auditorium - C5                           | 56 Motorcycle Safety Program Office - B7                | 77 Softball Field - B2  | 98 Whitten Hall - D3                                     |
| 15 Center for the Visual Arts and University Galleries (CVA) - E5 | 36 Haynie Hall - B2                                 | 57 Moulton Hall (MLT) - C7                              | 78 Stevenson Hall, Adlai E. (STV) - D8                          | 99 Wilkins Hall - B2                                     |
| 16 Colby Hall (COL) - D2  | 37 Heating Plant - C5                               | 58 Office of Residential Life Building - D4             | 79 Stroud Auditorium - A5                                       | 100 Williams Hall (WIH) - D7                             |
| 17 College of Business Building - D5                              | 38 Hewett Hall (HEW) - C10                          | 59 Old Union Building (OU) - D7                         | 80 Student Accounts Building - C2                               | 101 Wright Hall - B2                                     |
| 18 Cook Hall (CH) - C6  | 39 Honors Program - D10                             | 60 Parking Garage, North University Street - B6         | 81 Student Recreation Building (Willow and Beech Streets) - B10 | 102 211 North University Street - B5                     |
| 19 DeGarmo Hall (DEG) - C5  | 40 Horton Field House (HTN) - B3                    | 61 Parking Garage, South University Street - E4         | 82 Student Services Building - B5                               |  |
| 20 Dunn Hall - D4   | 41 Hovey Hall (Administration) - C8                 | 62 Planetarium - C8                                     | 83 Turner Hall (TUR) - B3                                       |  |
| 21 Edwards Hall (EDW) - C5  | 42 Hudson Building - B5                             | 63 Professional Development Annex - C3                  | 84 University High School (UH) - A5                             |  |