

UNIVERSITY FACTBOOK

2009–2010



PLANNING AND
INSTITUTIONAL
RESEARCH

Illinois State University





**ILLINOIS STATE
UNIVERSITY**
Illinois' first public university

November 2009

Dear Colleague:

I am pleased to present the twenty-third annual *FactBook* prepared by the Planning and Institutional Research office. The *FactBook* contains a collection of useful information designed to answer frequently asked questions about Illinois State University -- Illinois' first public university.

Much has changed since Illinois State University opened its doors to students in 1857. The University first conferred undergraduate degrees in 1860, began offering master's degree programs in 1943 and introduced doctoral work in 1962. Currently, the University offers sixty-six undergraduate programs, forty-one master's programs, nine doctoral programs, a Specialist in School Psychology and nine graduate level certificates. In fiscal year 2009, the University conferred 4,891 degrees - 4,117 baccalaureates, 713 master's, 45 doctorates and 16 certificates. A total of 21,184 students are enrolled this fall (On- and Off-Campus) - 86.8 percent of whom are enrolled in undergraduate programs.

While the University has undergone many changes, our core values have remained steadfast. These values - pursuit of learning and scholarship, individualized attention, public opportunity, diversity, and civic engagement - remain the foundation for everything we do. The goals articulated in the University's strategic plan, *Educating Illinois* emanate from these values, and collectively focus the institution on the actions necessary to be a first-choice public university for high-achieving, motivated students who seek individualized educational experiences combined with the resources of a large university. Data provided in the *FactBook* show that the University is attracting academically prepared students, and that our students are continuing and completing their education at historic rates.

I encourage you to use this publication to familiarize yourself with the basic facts about Illinois State University. Data are presented at the University and College level; information by department and major is available on-line at www.pir.ilstu.edu. Additional information on *Educating Illinois* is available at www.educatingillinois.ilstu.edu. If you have questions about the University or *Educating Illinois*, please contact the Planning and Institutional Research office by telephone at (309) 438-8393 or by e-mail at pir@ilstu.edu.

Sincerely,

A handwritten signature in black ink, appearing to read "Al Bowman".

Al Bowman
President



TABLE OF CONTENTS

TABLE OF CONTENTS

QUICK GLANCE

Board of Trustees & University Administrators	1
Deans, Department Chairs, and School Directors ~ Fall 2009	2
University Facts ~ Fall 2009	3
Undergraduate Students ~ Fall 2009	4
Graduate Students ~ Fall 2009	5
College Enrollment by Racial/Ethnic Designation ~ Fall 2009	6
Departmental Faculty Characteristics ~ Fall 2009	7
Strategic Plan <i>Educating Illinois 2008-2014</i>	8
Endowed Chairs ~ Fall 2009	9

ORGANIZATIONAL CHARTS

President ~ Al Bowman	11
Vice President Academic Affairs & Provost ~ Sheri Noren Everts	12
Vice President for Finance & Planning ~ Daniel Layzell	13
Vice President for Student Affairs ~ Steven L. Adams	14
Vice President for University Advancement ~ Dianne Ashby	15

STUDENTS

New

Applications, Acceptances, & Enrollments ~ Fall 2009	17
New Beginning Freshmen ~ Fall 2009	18
American College Testing (ACT) ~ Fall 2003 through Fall 2009	19
New Beginning Freshmen ~ Fall 2003 through Fall 2009	20
New Undergraduate Transfers ~ Fall 2003 through Fall 2009	21

Enrollment

Gender, Level, & Hours ~ Fall 2003 through Fall 2009	22
College, Racial/Ethnic Designation & Level ~ Fall 2009	23
College & Level ~ Fall 2003 and Fall 2009	24
Racial/Ethnic Designation & Level ~ Fall 2003 and Fall 2009	25
Class and Age ~ Fall 2009	26
College and Gender ~ Fall 2003 and Fall 2009	27
Non-Resident Alien Students ~ Fall 2003 and Fall 2009	28
On-and Off-Campus & Class ~ Fall 2003 and Fall 2009	29
Level ~ Fall 1999 through Fall 2009	30
Class, Gender & Racial/Ethnic Designation ~ Fall 2009	31
Class & Credit Hours ~ Fall 1999 through Fall 2009	32



TABLE OF CONTENTS (Continued)

STUDENTS

Enrollment (Continued)

Illinois Residents by County ~ Fall 2009	33
State of Residence ~ Fall 2009	34
Non-Resident Alien Students ~ Fall 2009	35

Degrees

College ~ Fiscal Year 2003 through Fiscal Year 2009	36
Undergraduate, Gender & Racial/Ethnic Designation ~ Fiscal Year 2003 through Fiscal Year 2009	37
Graduate, Level & Racial/Ethnic Designation ~ Fiscal Year 2003 through Fiscal Year 2009	38

Other

Class Size ~ Fall 2006 through Fall 2009	39
Time-To-Degree ~ Fall 1998 through Fall 2005	40
Retention and Graduation Rates	41

FACULTY/STAFF

Employee Category Full-Time Equivalency ~ Fall 2008 and Fall 2009	43
Type, Gender and Racial/Ethnic Designation ~ Fall 2009	44
Rank and Racial/Ethnic Designation ~ Fall 2009	45
Full-Time Equivalent (FTE) by College, Gender & Tenure Status ~ Fall 2008 and Fall 2009	46
College & Percent Appointment ~ Fall 2003 through Fall 2009	47
Tenured/Tenure Track Departmental Faculty, Age by Rank ~ Fall 2009	48
Fall to Fall Retention Rates	49
Fall to Fall Retention Rates ~ Minority	50
Average Annual Salary by Rank ~ Fall 2003 through Fall 2008	51

RESOURCES

Total Expenditures & Mandatory Transfers ~ Fiscal Years 2005 through 2009	53
Historical Appropriations and University Income Fund ~ Fiscal Years 2006 through 2010	54
Current Funds Revenues by Source ~ Fiscal Years 2008 and 2009	55
Sponsored Research, Instruction, Creative Works & Service ~ Fiscal Year 2006 through Fiscal Year 2009	56
Student Financial Aid & Institutional Support ~ Fiscal Year 2009	57
Undergraduate Student Tuition and Fee Rates ~ Academic Year 2007 through Academic Year 2009	58
Graduate Student Tuition and Fee Rates ~ Academic Year 2001 through Academic Year 2009	59
Milner Library	60

REFERENCE

Undergraduate Program Inventory ~ Fall 2009	61
Graduate Program Inventory ~ Fall 2009	62
Peer Institutions	63



**ILLINOIS STATE
UNIVERSITY**
Illinois' first public university

TABLE OF CONTENTS (Continued)

UNIVERSITY DEFINITIONS

Student Terms	64
Employee Terms	65
Other Terms	66

CAMPUS MAP



**ILLINOIS STATE
UNIVERSITY**
Illinois' first public university

QUICK GLANCE





Board of Trustees

	<u>Term Expires</u>
Michael McCuskey - chair	January 2011
Jay D. Bergman	January 2011
Anne Davis	January 2011
Bob Dobski	January 2013
Betty Kinser	January 2011
Joanne E. Maitland	January 2013
Vacant Position	
Geno Bagnuolo	Student Trustee

Current Administrators

Al Bowman	President
Sheri Noren Everts	Vice President of Academic Affairs and Provost
Daniel Layzell	Vice President for Finance and Planning
Steven L. Adams	Vice President for Student Affairs
Dianne Ashby	Vice President for University Advancement

Past and Current Presidents

Charles E. Hovey	1857-1862	Samuel J. Braden	1967-1970
Richard Edwards	1862-1876	David K. Berlo	1971-1973
Edwin C. Hewett	1876-1890	Gene A. Budig	1973-1977
John W. Cook	1890-1899	Lloyd Watkins	1977-1988
Arnold Thompkins	1899-1900	Thomas Wallace	1988-1995
David Felmley	1900-1930	David A. Strand	1995-1999
Harry A. Brown	1930-1933	Victor John Boschini Jr.	1999-2003
Raymond W. Fairchild	1933-1955	Al Bowman	2003-Present
Robert G. Bone	1956-1967		



Applied Science and Technology

Agriculture
School of Information Technology
Criminal Justice Sciences
School of Kinesiology and Recreation
Health Sciences
Family and Consumer Sciences
Technology
Military Science

Arts and Sciences

Biological Sciences
Chemistry
Economics
English
Languages, Literatures and Cultures
Geography-Geology
History
School of Communication
Mathematics
Philosophy
Physics
Politics and Government
Psychology
School of Social Work
Sociology and Anthropology
Communication Sciences & Disorders

Dr. Jeffery A. Wood

Dr. Robert Rhykerd
Dr. Joaquin A. Vila-Ruiz *
Dr. Jacqueline L. Schneider
Dr. Kevin L. Burke
Dr. Marilyn J. Morrow
Dr. Connor M. Walters
Dr. Richard A. Boser
Lt. Col. Raymond Hart

Dr. James Payne *

Dr. H. Tak Cheung
Dr. John E. Baur *
Dr. Neil T Skaggs *
Dr. Joan A. Mullin
Dr. Daniel L. Everett
Dr. David H. Malone
Dr. Anthony Crumbaugh *
Dr. Larry W. Long
Dr. George F. Seelinger
Dr. James Swindler
Dr. Richard F. Martin, Jr.
Dr. Ali Riaz
Dr. Jerome S. Jordan *
Dr. Wanda Bracy
Dr. Fred H. Smith
Dr. Joseph Smaldino

Business

Accounting
Finance, Insurance and Law
Management & Quantitative Methods
Marketing

Education

Curriculum and Instruction
Educational Administration & Foundations
Special Education

Fine Arts

School of Art
School of Music
School of Theatre

Menmonite College of Nursing

University Libraries

Scott D. Johnson

Dr. Gerald McKean *
Dr. Gary Koppenhaver
Dr. Jawahar I. Mohammed
Dr. Timothy A. Longfellow

Dr. Deborah J. Curtis

Dr. Phyllis Metcalf
Dr. Patricia H. Klass
Dr. Jeffrey Bakken

Dr. James Major

Mr. J. Anthony Crowley
Dr. Stephen B. Parsons
Dr. John R. Poole *

Dr. Janet W. Krejci

Ms. Cheryl A. Elzy

* Acting/Interim



On-Campus Headcount Enrollment

Undergraduate	18,344
Graduate	2,512
Total	20,856

Enrollment by Gender

Male	8,970
Female	11,886

Enrollment by Racial/Ethnic Designation

Am. Indian/Alaskan Native	87
Black/Non-Hispanic	1,121
Asian/Pacific Islander	415
Hispanic	871
White/Non-Hispanic	17,184
Not Reported	777
Non-Resident Alien	401

New Students Fall 2009

Beginning Freshmen Cohort	3,033
Average ACT score	24.3
4-Year College Transfers	480
Community College Transfers	1,446

Degrees Conferred in Fiscal Year 2009

Baccalaureate	4,117
Masters	713
IBHE Approved Certificates	16
Doctoral	45
Total	4,891

Graduate Certificates Awarded 66

Persistence and Graduation Rates

Freshmen returning for second fall.	84.9%
6-Year Graduation rate (before 7th fall).	68.8%

Living Alumni

Illinois	114,874
Other U.S. States	42,731
Foreign Countries	909
Locations Unknown	18,565
Total	177,079

Student Financial Aid

Seventy-two percent (15,367) of all students received financial support in Fiscal Year 2009.

Student Housing

31.3 percent of students live in the residence halls; another 1.4 percent live in University-owned housing

University Employees

Departmental Faculty	1,180
Non-Departmental Faculty	33
Library Faculty	33
Lab School Faculty	95
Managerial/Administrative	69
Professional	660
Civil Service	1,472
Total	3,542

Milner Library Holdings

Volumes	1,602,003
Printed and electronic periodicals	56,595

Research and Sponsored Programs

Proposals Awarded	216
Funds Awarded in FY 09	\$18.4 million

Grounds, Buildings, and Facilities

Approximately 970 acres; 143 buildings. The estimated replacement value of the facilities is \$1.1 billion.

Fall 2009 Tuition & Fees Per Credit Hour -

New Students (State Resident)

Undergraduate	\$340.30
Graduate	\$284.30

Fiscal Year 2009 Operating Expenditures

\$333.2 million

University Accreditation Agencies

Higher Learning Commission of the North Central Association of Colleges and Schools; and National Council for Accreditation of Teacher Education.

Student to Faculty Ratio 19:1

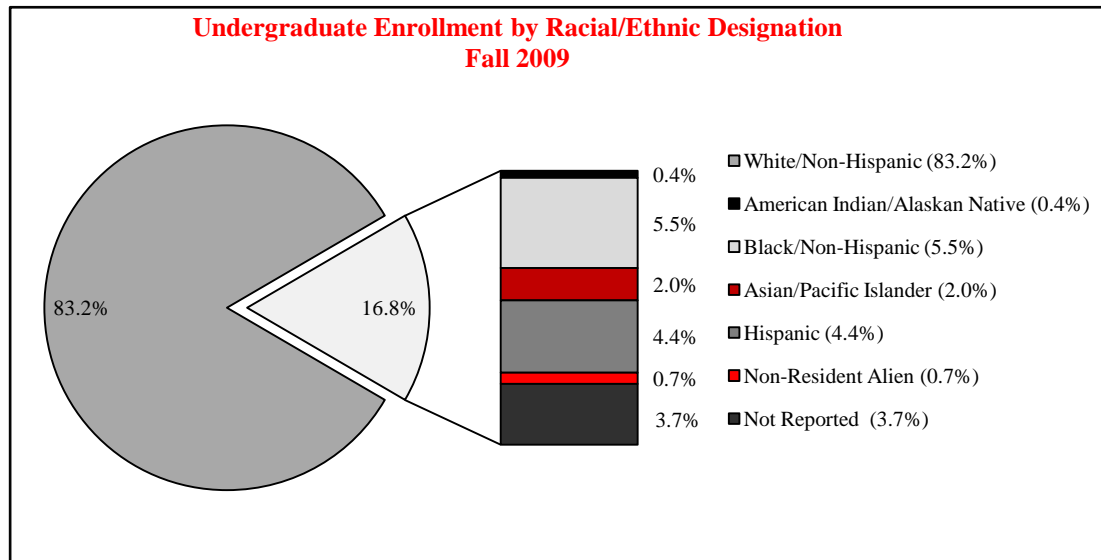
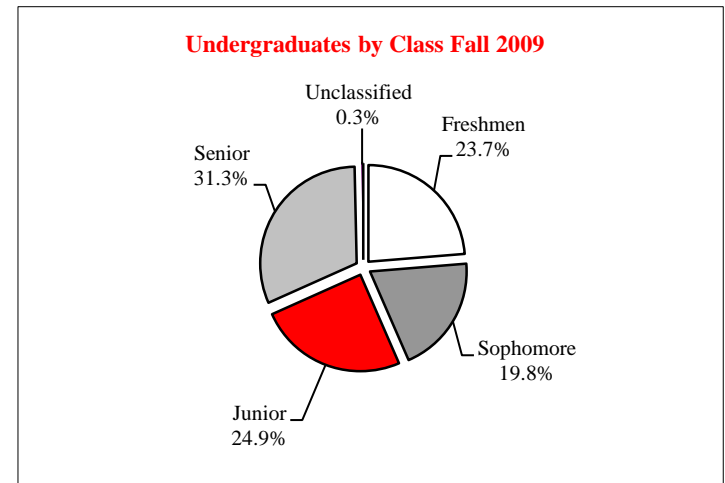


QUICK GLANCE

UNDERGRADUATE STUDENTS ~ FALL 2009

<u>Class</u>	<u>Average Age</u>	<u>Headcount</u>	<u>FTE</u> ¹
Freshmen	18.4	4,347	4,197
Sophomore	19.7	3,623	3,483
Junior	21.4	4,560	4,222
Senior	23.3	5,750	5,001
Unclassified	23.9	64	39
Total	21.0	18,344	16,943

¹ Undergraduate Full-time Equivalency (FTE) credit hours divided by 15.



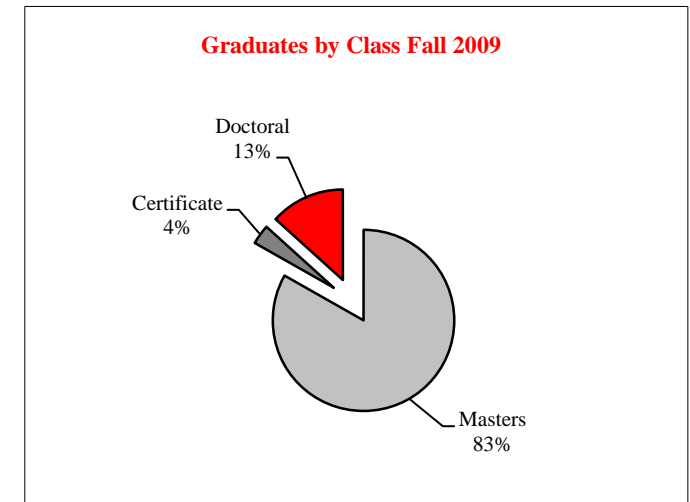
<u>Racial/Ethnic Designation</u>	<u>Headcount</u>
American Indian/Alaskan Native	79
Black/Non-Hispanic	1,015
Asian/Pacific Islander	364
Hispanic	816
White/Non-Hispanic	15,260
Not Reported	686
Non-Resident Alien	124
Total	18,344



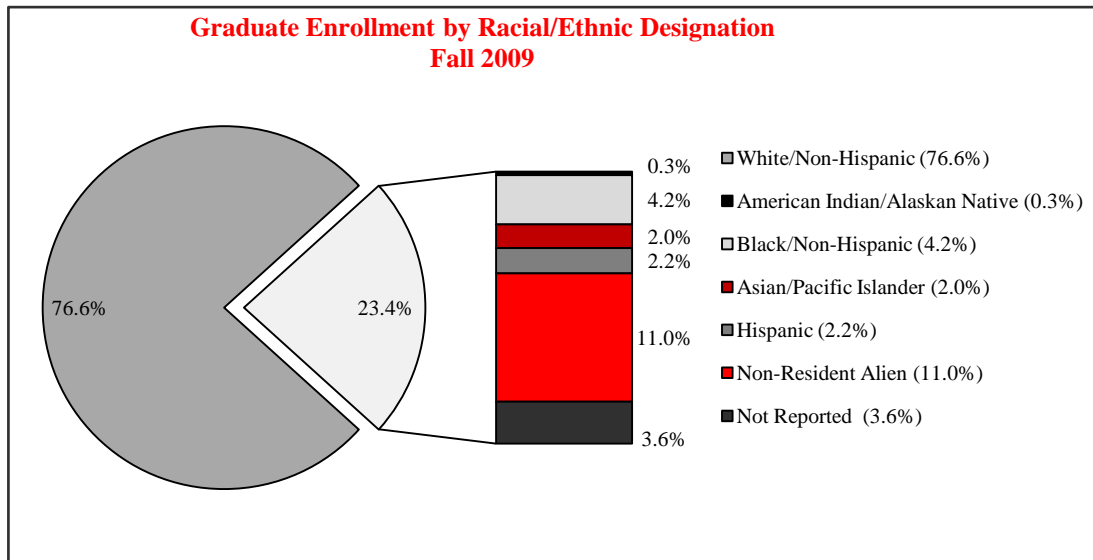
QUICK GLANCE

GRADUATE STUDENTS ~ FALL 2009

<u>Class</u>	<u>Average Age</u>	<u>Headcount</u>	<u>FTE</u> ¹
Masters	29.0	2,090	1,652
Certificate	33.9	88	49
Doctoral	36.4	334	225
Total	30.2	2,512	1,926



¹ Graduate Full-time Equivalency (FTE) credit hours divided by 9.



<u>Racial/Ethnic Designation</u>	<u>Headcount</u>
American Indian/Alaskan Native	8
Black/Non-Hispanic	106
Asian/Pacific Islander	51
Hispanic	55
White/Non-Hispanic	1,924
Not Reported	91
Non-Resident Alien	277
Total	2,512

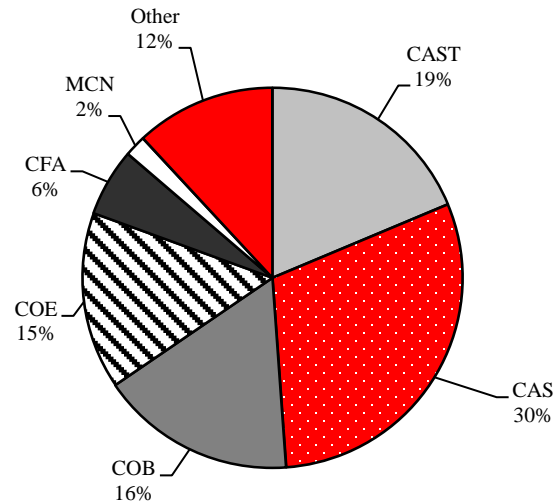


COLLEGE ENROLLMENT BY RACIAL/ETHNIC DESIGNATION ~ Fall 2009

	<u>American Indian/ Alaskan Native</u>	<u>Black/Non- Hispanic</u>	<u>Asian/Pacific Islander</u>	<u>Hispanic</u>	<u>White/Non- Hispanic</u>	<u>Non-Resident Alien</u>	<u>Not Reported</u>	<u>Total</u>
<u>All Students</u>								
Applied Science and Technology	25	211	66	171	3,190	100	134	3,897
Arts and Sciences	29	359	134	281	5,053	147	287	6,290
Business	12	170	86	125	2,917	60	97	3,467
Education	8	99	50	116	2,774	11	81	3,139
Fine Arts	4	42	20	40	990	25	81	1,202
Mennonite College of Nursing	1	10	7	3	343	3	10	377
Other ¹	8	230	52	135	1,917	55	87	2,484
Total	87	1,121	415	871	17,184	401	777	20,856

¹ Other includes: Unclassified, Interdisciplinary Studies, Student-at-Large, Undeclared, and University Studies.

Total Enrollment by College Fall 2009





QUICK GLANCE

DEPARTMENTAL FACULTY CHARACTERISTICS ~ FALL 2009

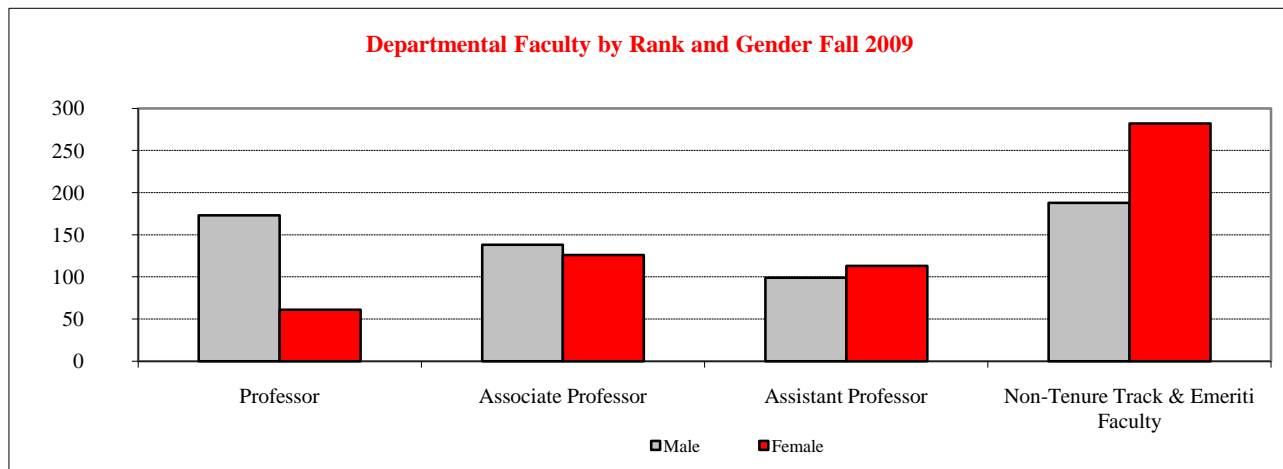
<u>Rank</u>	<u>Gender</u>		
	<u>Male</u>	<u>Female</u>	<u>Total</u>
Professor	173	61	234
Associate Professor	138	126	264
Assistant Professor	99	113	212
Other ¹	188	282	470
Total	598	582	1,180

<u>Rank</u>	<u>Percent Appointment</u>		
	<u>Full-Time</u>	<u>Part-Time</u>	<u>Total</u>
Professor	234	--	234
Associate Professor	264	--	264
Assistant Professor	212	--	212
Other ¹	166	304	470
Total	876	304	1,180

<u>Racial/Ethnic Designation</u>	<u>Number</u>	<u>Percent</u>
American Indian/Alaskan Native	2	0.2
Black/Non-Hispanic	37	3.1
Asian/Pacific Islander	70	5.9
Hispanic	29	2.5
White/Non-Hispanic	1,013	85.8
Non-Resident Alien	24	2.0
Unknown	5	0.4
Total	1,180	100.0

<u>Years of Service</u>	<u>Tenure Status</u>		
	<u>Track</u>	<u>Non-Tenure</u>	<u>Total</u>
0-3 Years	173	276	449
4-6 Years	89	58	147
7-9 Years	126	43	169
10-14 Years	115	51	166
15-19 Years	77	24	101
20 or More Years	130	18	148
Total	710	470	1,180

¹ Non-Tenure Track & Emeriti Faculty





EDUCATING ILLINOIS: Priorities for Illinois' first public university 2008-2014

Illinois State University - Illinois' first public university - is an institution of first choice for increasing numbers of academically talented and motivated students. The university maintains strong, mutually reinforcing commitments to scholarship, and to undergraduate and graduate education.

The University's strategic plan, *Educating Illinois 2008-2014: Priorities for Illinois' First Public University*, builds upon the University's heritage, strengths, and recent accomplishments. The plan advances the Board of Trustees' vision statement for the University, and it reflects extensive consultation with individuals from throughout the Illinois State University community.

Our Mission: We at Illinois State University work as a diverse community of scholars with a commitment to fostering a small-college atmosphere with large-university opportunities. We promote the highest academic standards in our teaching, scholarship, public service and the connections we build among them. We devote all of our resources and energies to creating the most supportive and productive community possible to serve the citizens of Illinois and beyond.

Our Vision: Illinois State University will continue to occupy a unique position of strength and visibility among the institutions of higher education in Illinois, the nation, and the world. Illinois State University will continue to be the first-choice public university in Illinois for high-achieving, motivated students who seek an individualized educational experience at an institution that offers excellent undergraduate and graduate programs and supports high-quality research, scholarship, and creative activities.

Our Values:

Pursuit of Learning and Scholarship: Illinois State University works with students as partners in their educational development inside and outside of the classroom, so that students come to appreciate learning as an active and lifelong process. The University contributes new knowledge through research, scholarship, and creative activities, as well as other forms of individual scholarship in which all students, faculty, and staff are encouraged to participate.

Individualized Attention: Illinois State University provides a supportive environment. An innovative General Education program, strong student-faculty-staff connections, and superior student services focus on each student as an individual, with unique educational needs and potential. The University is dedicated to placing the learner at the center of teaching and scholarship, to recognizing the importance of each faculty and staff member to the successful operation of the programs and services provided, and to acknowledging the on-going contributions of its former students, faculty, and staff.

Public Opportunity: Illinois State University assures students access to educational, research, and service opportunities through a wide range of high quality programs; faculty mentors who are scholars and creative artists of repute in their disciplines; and the support of outstanding facilities, technologies, and library resources. The University partners with business, industry, government, and education providing leadership in statewide, national, and international initiatives; expanding service and outreach; and enhancing financial support for instructional, scholarship, and service activities.

Diversity: Illinois State University affirms and encourages community and an informed respect for differences among students, faculty, and staff by fostering an inclusive environment characterized by ethical behavior and social justice that prepares students to be fully engaged participants in a global society. The University supports a diverse faculty and staff who mentor a diverse student population. The University endeavors to create a varied and inclusive community where all students, staff, and faculty are active participants in a global society characterized by teamwork, respect for differences, civic engagement, and educational goals which celebrate diversity.

Civic Engagement: Illinois State University prepares students to be informed and engaged citizens who will promote and further the collective goals of society. The University promotes active learning experiences through which students will gain an awareness and understanding of civic engagement as a lifelong responsibility. Furthermore, the University encourages faculty and staff to serve as engaged civic leaders and role models promoting the quality of life for all citizens through collaborative and individual action.



Endowed chairs are a hallmark of a great university. The tradition of an endowed chair in education dates back to 1502 when the mother of Henry VII established the Lady Margaret Professorship of Divinity at Oxford. More than 200 years later the first endowed chair was established in America, the Hollis Professorship of Divinity created in 1721 at Harvard.

Endowed chairs offer many benefits to the donor, the honored scholar and students. An endowed chair offers Illinois State University the opportunity to offer a more diverse curriculum that is not dependent on usual income sources such as tuition and state funds. Endowed chairs also offer the means to attract, retain and honor distinguished faculty.

The esteemed scholars who are endowed chairs receive recognition for personal achievements in their fields and the satisfaction that the University supports research and teaching in their discipline. Students are challenged and guided by exposure to the highest quality academic leadership.

Donors who generously have endowed chairs know that they are not only ensuring academic excellence in teaching and research today, but that their donation is truly a gift to the future of the University. Endowed chairs are living memorials, perpetuating the donor's name and signifying a permanent commitment to quality education.

Illinois State University has the following Endowed Chairs:

Tom and Janet Andes Endowed Chair for General Education (established 2001), Dr. Kenton Machina (2001-2005) (currently vacant)

K. Patricia Cross Endowed Chair in the Scholarship of Teaching and Learning (established 2001), Dr. Kathleen McKinney (2002-present)

Kara Peters Endowed Chair in Special Education Assistive Technology (established 2002), Dr. Phil Parette (2003-present)

Edmundson-Miller Endowed Chair of Insurance and Risk Management (established 2002), Dr. Richard MacMinn (2002-present)



**ILLINOIS STATE
UNIVERSITY**
Illinois' first public university



**ILLINOIS STATE
UNIVERSITY**
Illinois' first public university

ORGANIZATIONAL CHARTS





Al Bowman is President of Illinois State University. Dr. Bowman joined Illinois State University in 1978 as a faculty member in Speech Pathology and Audiology. He was appointed Chairperson of Speech Pathology and Audiology in 1994 and served as Interim Provost during the 2002-2003 academic year. Bowman received a bachelor's degree in Speech Pathology from Augustana College in Rock Island, Illinois. He earned a master's degree from Eastern Illinois University and a Ph.D. in Speech and Hearing Science from the University of Illinois-Urbana/Champaign. Dr. Bowman is a member of the Chicago Education Alliance, the American Speech-Language-Hearing Association, and the American Council on Education's Commission on Women in Higher Education. He serves on the board of directors for Chestnut Health Systems, BroMenn Healthcare, and the McLean County Museum of History. He is also a member of the NCAA's Division I-AA/I-AAA Presidential Advisory Group.

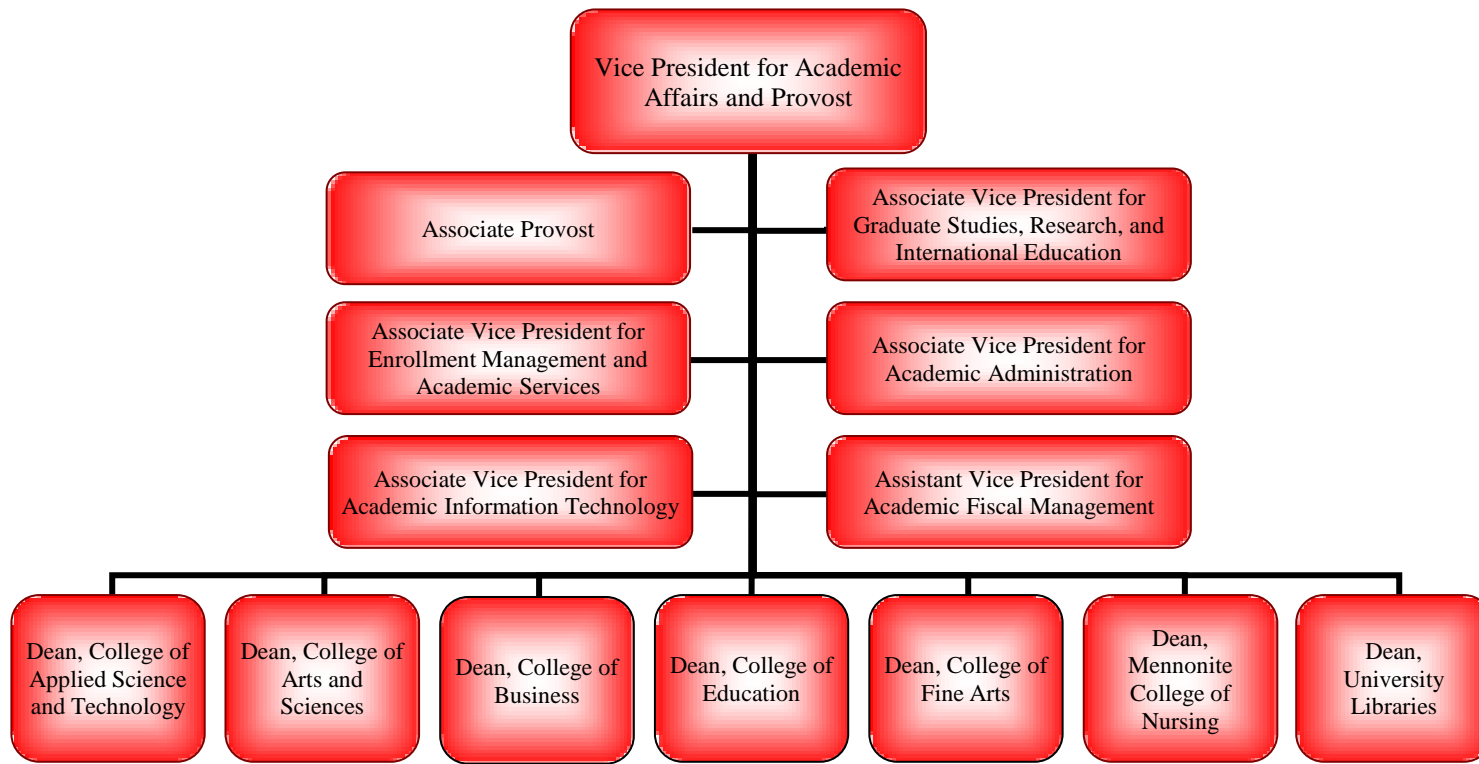




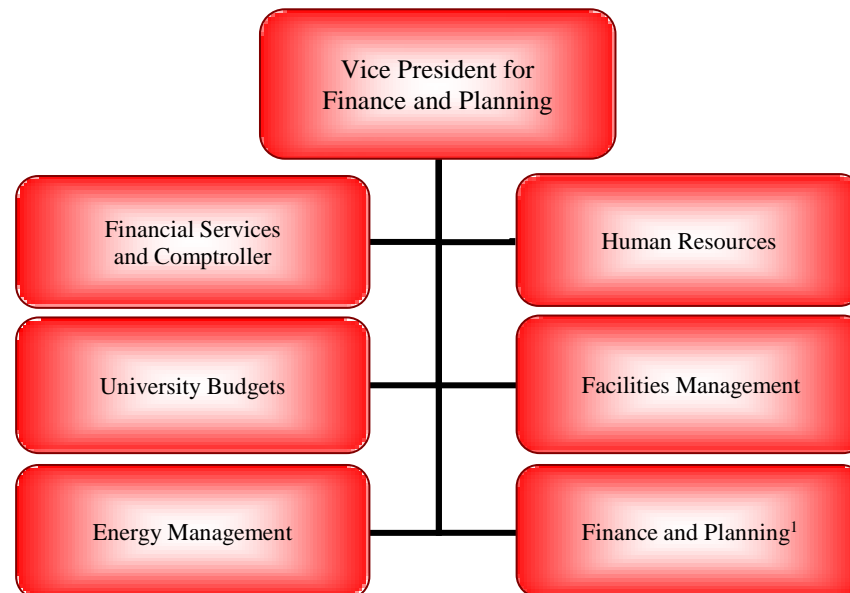
ORGANIZATIONAL CHARTS

VP ACADEMIC AFFAIRS & PROVOST ~ SHERI EVERTS

Sheri Noren Everts is the Vice President for Academic Affairs and Provost at Illinois State University. Previously she served as Interim Senior Vice Chancellor for Academic and Student Affairs, acting Vice Chancellor, and Associate Vice Chancellor at the University of Nebraska at Omaha (UNO). Everts has co-authored two books, has published numerous articles, and made over 200 professional presentations on assessment and portfolios. She received her bachelor's degree in English and Secondary Education, master's degree in Literacy Education and English, and Ph.D. in Administration, Curriculum and Instruction from the University of Nebraska-Lincoln.

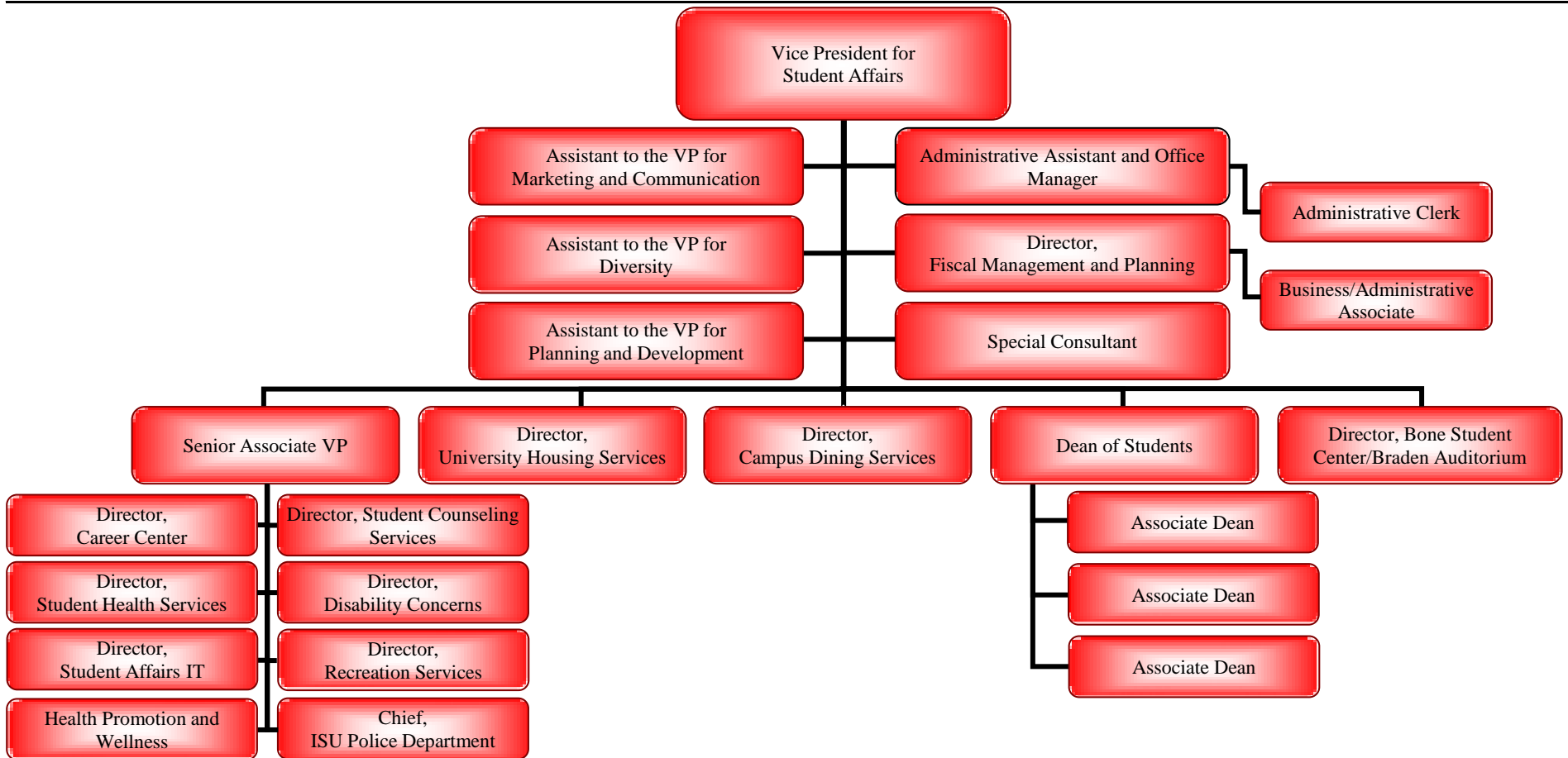


Dan Layzell became Vice President of Finance and Planning at Illinois State University in September 2009. Immediately prior to joining the University, he served as Associate Vice President for Planning and Administration at the University of Illinois, he was formerly a Deputy Director of Planning and Budgeting for the Illinois Board of Higher Education. He also previously was a partner in the higher education practice of MGT of America, Inc., a consulting firm based in Tallahassee, Florida, director of policy analysis and research for the University of Wisconsin System, and a budget analyst for the Arizona Legislature. He has been an adjunct faculty member in the graduate higher education programs at the University of Illinois at Urbana-Champaign, Florida State University, and University of Wisconsin-Madison. Dr. Layzell has a Ph.D. in Higher Education from Florida State University, an A.M. in Labor and Industrial Relations from the University of Illinois at Urbana-Champaign, and a B.A. in Economics and Business Administration from Illinois College. He is the author or co-author of various articles, book chapters, monographs, and conference papers dealing with topics related to higher education finance, strategic planning, and public policy.



¹ Includes Administrative Information Systems, eMerge/iPeople, Environmental Health and Safety, Facilities Planning and Construction Management, Planning and Institutional Research, and Systems Support

Steve Adams became Vice President for Student Affairs in July, 2006. He has spent his entire 33-year career at Illinois State University, having served in major administrative positions in Academic Affairs prior to his appointment as Student Affairs Vice President. Mr. Adams formerly served as Assistant Vice President for Enrollment Management and Academic Services and as Director of Admissions. He served interim roles as Director of Financial Aid and Director of Enrollment Management. He received the lifetime achievement award from the Illinois Association for College Admission Counseling, the distinguished service award from the Illinois Association for College Admission Counseling, the distinguished service award from the Illinois American College Testing (ACT) Council, and is a member of the Illinois Basketball Hall of Fame and Illinois State University Athletics Hall of Fame as the recipient of the Stretch Miller award. He earned his baccalaureate degree in Business Administration from Illinois Wesleyan University, completed graduate work in Counselor Education at Illinois State University, and was a Fellow in the Education Policy Fellowship Program in Washington, DC.

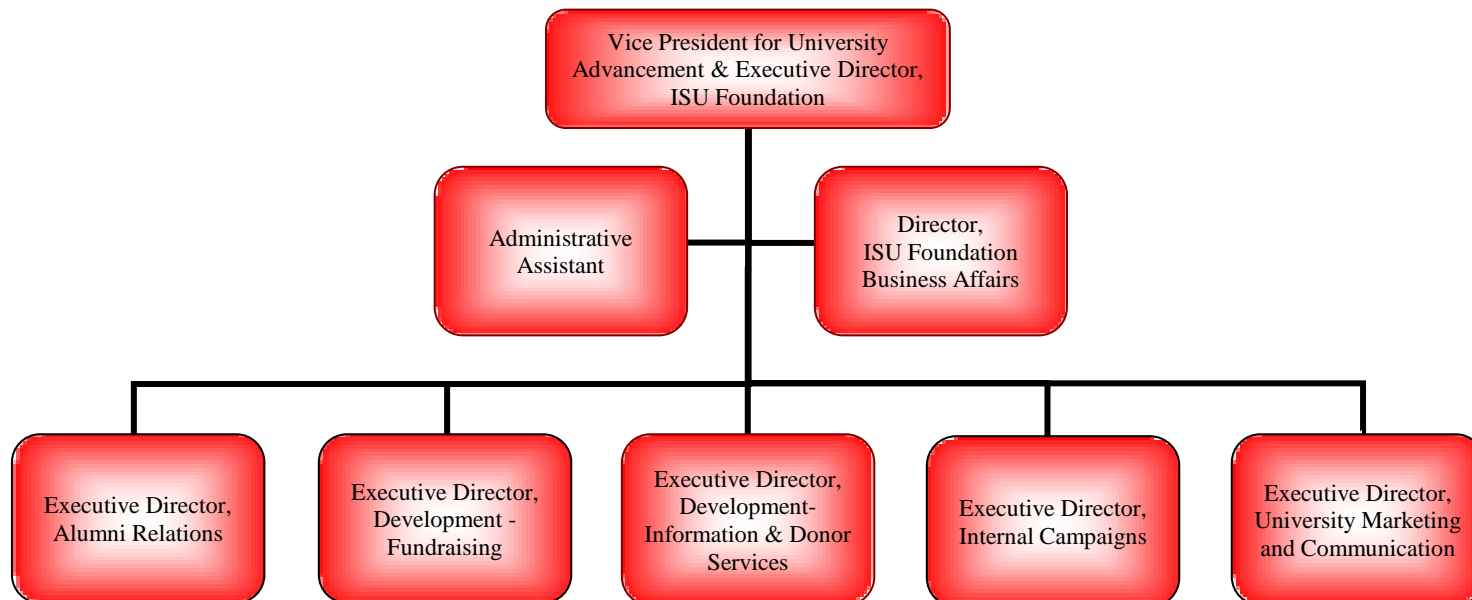




ORGANIZATIONAL CHARTS

VP for UNIVERSITY ADVANCEMENT - DIANNE ASHBY

Dianne Ashby became Vice President for University Advancement and Executive Director of Illinois State University Foundation in July 2005. Dr. Ashby served as professor and the Dean of the College of Education at Illinois State University. She has been a school administrator for the Illinois Department of Corrections, staff to the Illinois State Board of Education, principal of University High School (Illinois State University), and chair of the Department of Educational Administration and Foundations at Illinois State. She earned her bachelor's degree in Speech and Theatre Arts from MacMurray College, her master's degree in Educational Administration from the University of Illinois-Springfield (then Sangamon State), and her doctorate in Educational Administration from Southern Illinois University-Carbondale.





**ILLINOIS STATE
UNIVERSITY**
Illinois' first public university



**ILLINOIS STATE
UNIVERSITY**
Illinois' first public university

STUDENTS





STUDENTS ~ NEW

APPLICATIONS, ACCEPTANCES, & ENROLLMENTS - FALL 2009

<u>Racial/Ethnic Designation</u>	<u>New Beginning Freshmen</u>			<u>New Beginning Freshmen</u>	
	<u>Applications</u>	<u>Acceptances</u>	<u>Enrollments</u>	<u>Yield Rate</u>	<u>Show Rate</u>
American Indian/Alaskan Native	71	40	10	56%	25%
Black/Non-Hispanic	2,276	790	221	35	28
Asian/Pacific Islander	422	287	74	68	26
Hispanic	1,056	622	209	59	34
White/Non-Hispanic	9,758	6,634	2,404	68	36
Not Reported	460	299	104	65	35
Non-Resident Alien	71	39	11	55	28
Total	14,114	8,711	3,033	62	35

<u>Racial/Ethnic Designation</u>	<u>New Undergraduate Transfer Students (excludes Unclassified)</u>			<u>New Undergraduate Transfer Students (excludes Unclassified)</u>	
	<u>Applications</u>	<u>Acceptances</u>	<u>Enrollments</u>	<u>Yield Rate</u>	<u>Show Rate</u>
American Indian/Alaskan Native	24	19	8	79%	42%
Black/Non-Hispanic	277	202	107	73	53
Asian/Pacific Islander	87	73	33	84	45
Hispanic	202	163	101	81	62
White/Non-Hispanic	3,177	2,738	1,578	86	58
Not Reported	180	147	82	82	56
Non-Resident Alien	46	39	17	85	44
Total	3,993	3,381	1,926	85	57

<u>Racial/Ethnic Designation</u>	<u>New Graduate Students</u>			<u>New Graduate Students</u>	
	<u>Applications</u>	<u>Acceptances</u>	<u>Enrollments</u>	<u>Yield Rate</u>	<u>Show Rate</u>
American Indian/Alaskan Native	9	4	4	44%	100%
Black/Non-Hispanic	89	49	34	55	69
Asian/Pacific Islander	50	28	16	56	57
Hispanic	41	25	16	61	64
White/Non-Hispanic	1,325	767	507	58	66
Not Reported	78	50	31	64	62
Non-Resident Alien	419	170	70	41	41
Total	2,011	1,093	678	54	62



STUDENTS ~ NEW
NEW BEGINNING FRESHMEN ~ FALL 2009

<u>ACT Composite</u>	<u>Number</u>	<u>Percent</u>	<u>Cumulative</u>
30-36	163	5.4	5.4
26-29	774	25.5	30.9
23-25	1,260	41.5	72.4
20-22	684	22.6	95.0
18-19	104	3.4	98.4
16-17	27	0.9	99.3
1-15	1	0.0	99.3
Not Reported	20	0.7	100.0

<u>Top Illinois Counties</u>	<u>Number</u>
Cook	1,044
DuPage	395
Will	275
Lake	267
Kane	149
McLean	139
McHenry	95
Sangamon	44
Tazewell	43
Winnebago	41
Champaign	38
Peoria	36

Average ACT Composite Scores

<u>Fall Term</u>	<u>ACT Interquartile</u>	<u>Average ACT Composite Scores</u>					
		<u>All Students¹</u>			<u>Core Curriculum¹</u>		
		<u>Illinois State University</u>	<u>Illinois</u>	<u>National</u>	<u>Illinois</u>	<u>National</u>	
2005	22-26	Fall 2005	23.8	20.3	20.9	22.5	21.9
2006	22-26	Fall 2006	23.9	20.5	21.1	22.4	21.9
2007	22-26	Fall 2007	24.2	20.5	21.2	22.5	22.0
2008	22-26	Fall 2008	23.9	20.7	21.1	22.4	22.0
2009	22-26	Fall 2009	24.3	20.8	21.1	22.7	22.0

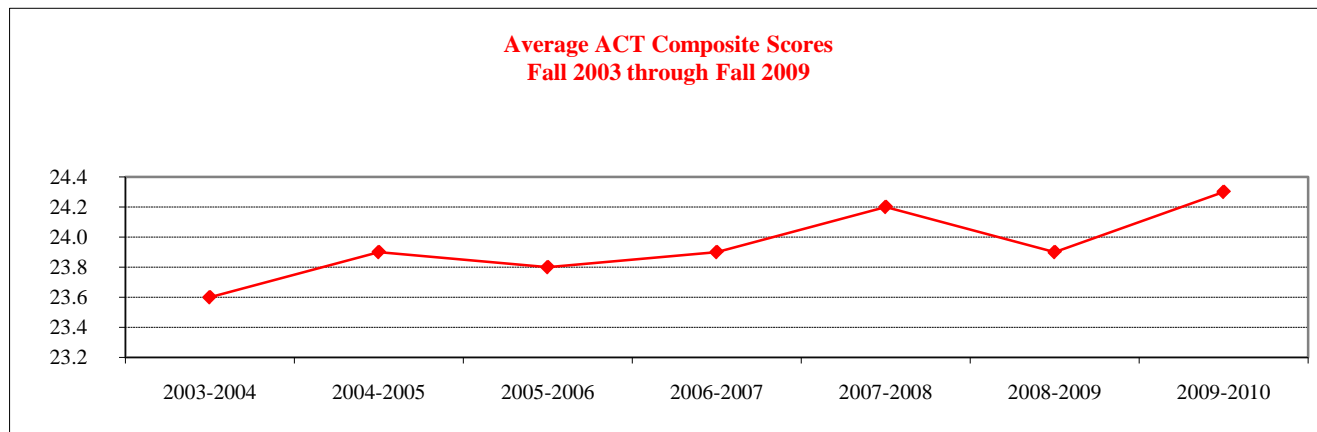
¹ Core curriculum is 4 years English; 3 years each Math, Social Sciences, & Natural Science.



<u>Subscores and Composite</u>	<u>New Beginning Freshmen</u>						
	<u>2003-2004</u>	<u>2004-2005</u>	<u>2005-2006</u>	<u>2006-2007</u>	<u>2007-2008</u>	<u>2008-2009</u>	<u>2009-2010</u>
English	23.4	23.7	23.8	24.1	24.2	24.0	24.5
Math	23.1	23.5	23.4	23.5	23.7	23.6	24.0
Reading	23.9	24.5	24.1	24.4	24.6	24.2	24.4
Science	23.2	23.1	23.2	23.1	23.5	23.2	23.6
Composite	23.6	23.9	23.8	23.9	24.2	23.9	24.3

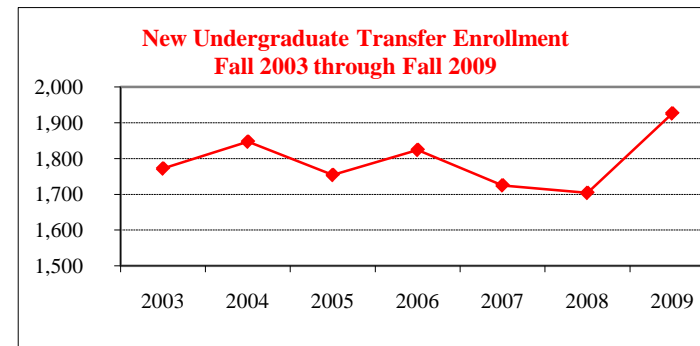
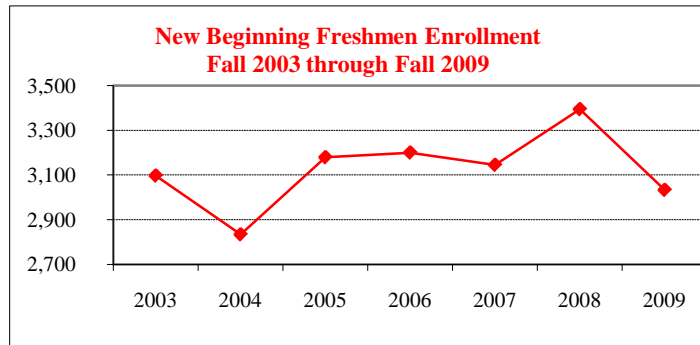
<u>Composite Scores By College</u>	<u>New Beginning Freshmen</u>						
	<u>2003-2004</u>	<u>2004-2005</u>	<u>2005-2006</u>	<u>2006-2007</u>	<u>2007-2008</u>	<u>2008-2009</u>	<u>2009-2010</u>
Applied Science & Technology	23.6	23.5	23.5	23.6	24.0	23.7	23.6
Arts & Sciences	24.6	24.9	24.8	24.9	24.8	24.4	24.8
Business	23.7	23.7	23.9	24.0	24.0	23.9	24.2
Education	23.8	23.8	24.1	24.0	24.3	23.7	24.4
Fine Arts	24.3	24.9	24.5	25.2	24.5	24.9	25.2
Mennonite College of Nursing	22.7	24.0	24.2	26.2	26.7	26.4	26.6
Other Majors ¹	22.1	22.5	22.2	22.6	23.1	23.1	23.4
Total	23.6	23.9	23.8	23.9	24.2	23.9	24.3

¹ Includes General Student and General Studies; Excludes Unclassified Students.



ENROLLMENT BY RACIAL/ETHNIC DESIGNATION ~ FALL 2003 through 2009

<u>Racial/Ethnic Designation</u>	<u>New Beginning Freshmen Enrollment</u>						
	<u>Fall 2003</u>	<u>Fall 2004</u>	<u>Fall 2005</u>	<u>Fall 2006</u>	<u>Fall 2007</u>	<u>Fall 2008</u>	<u>Fall 2009</u>
American Indian/Alaskan Native	11	13	5	14	14	17	10
Black/Non-Hispanic	248	219	232	212	187	187	221
Asian/Pacific Islander	52	55	62	58	61	80	74
Hispanic	126	97	131	126	127	154	209
White/Non-Hispanic	2,645	2,297	2,548	2,690	2,652	2,840	2,404
Not Reported	--	134	192	92	101	110	104
Non-Resident Alien	15	19	9	8	3	6	11
Total	3,097	2,834	3,179	3,200	3,145	3,394	3,033



<u>Racial/Ethnic Designation</u>	<u>New Transfer Student Enrollment</u>						
	<u>Fall 2003</u>	<u>Fall 2004</u>	<u>Fall 2005</u>	<u>Fall 2006</u>	<u>Fall 2007</u>	<u>Fall 2008</u>	<u>Fall 2009</u>
American Indian/Alaskan Native	4	4	3	5	9	7	8
Black/Non-Hispanic	65	99	79	69	47	47	107
Asian/Pacific Islander	18	35	27	26	22	37	33
Hispanic	50	52	45	62	65	48	101
White/Non-Hispanic	1,616	1,508	1,467	1,593	1,494	1,472	1,578
Not Reported	--	131	110	55	80	79	82
Non-Resident Alien	19	18	23	14	8	14	17
Total	1,772	1,847	1,754	1,824	1,725	1,704	1,926



NEW UNDERGRADUATE TRANSFERS ~ FALL 2003 through FALL 2009

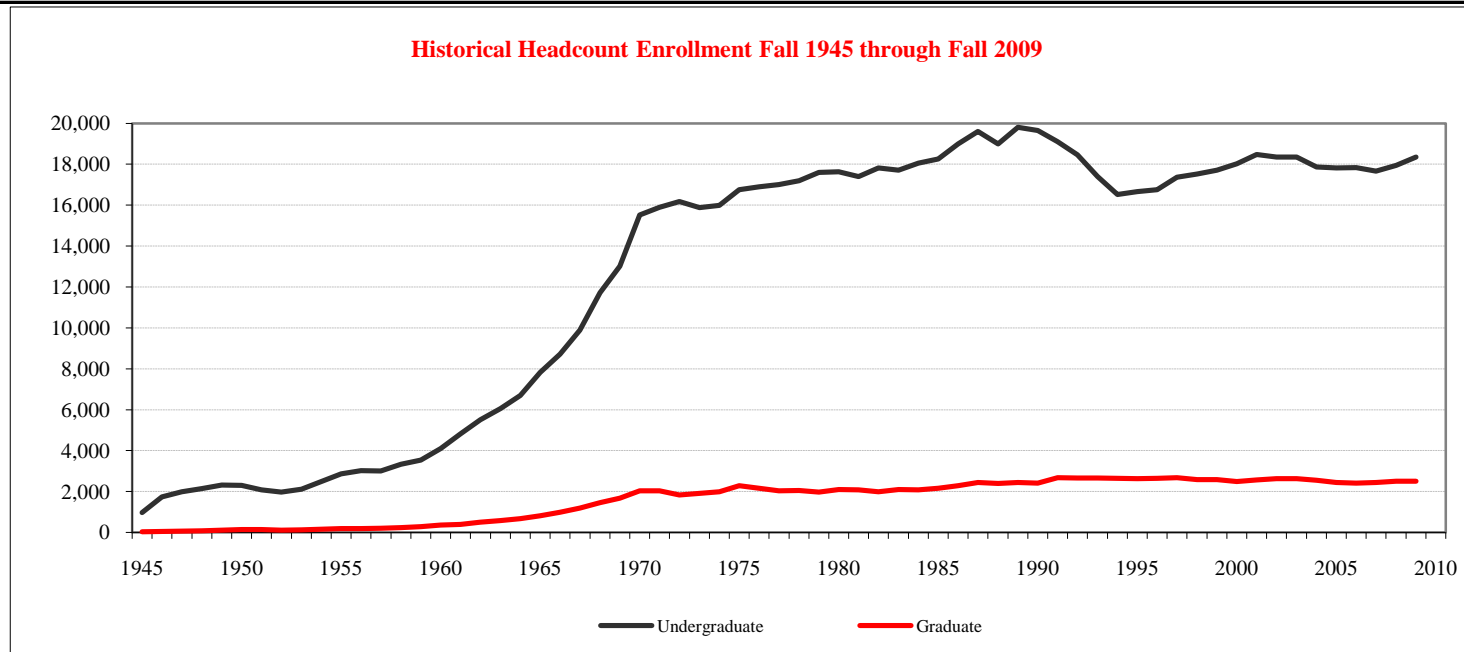
<u>Transfer Institution Type</u>	<u>Fall 2003</u>	<u>Fall 2004</u>	<u>Fall 2005</u>	<u>Fall 2006</u>	<u>Fall 2007</u>	<u>Fall 2008</u>	<u>Fall 2009</u>
Community Colleges	1,371	1,401	1,370	1,403	1,337	1,320	1,446
4-Year Colleges	401	446	384	421	388	384	480
Total	1,772	1,847	1,754	1,824	1,725	1,704	1,926
<u>Gender</u>	<u>Fall 2003</u>	<u>Fall 2004</u>	<u>Fall 2005</u>	<u>Fall 2006</u>	<u>Fall 2007</u>	<u>Fall 2008</u>	<u>Fall 2009</u>
Male	866	931	838	918	886	856	994
Female	906	916	916	906	839	848	932
<u>Class Level</u>	<u>Fall 2003</u>	<u>Fall 2004</u>	<u>Fall 2005</u>	<u>Fall 2006</u>	<u>Fall 2007</u>	<u>Fall 2008</u>	<u>Fall 2009</u>
Freshmen (0-29 Hours)	194	193	202	224	265	252	243
Sophomore (30-59 Hours)	654	674	603	638	627	601	664
Junior (60-89 Hours)	848	906	881	888	771	801	925
Senior (90 or More Hours)	76	74	68	74	62	50	94
<u>Associate Degree</u>	<u>Fall 2003</u>	<u>Fall 2004</u>	<u>Fall 2005</u>	<u>Fall 2006</u>	<u>Fall 2007</u>	<u>Fall 2008</u>	<u>Fall 2009</u>
Yes	744	743	794	883	776	783	706
No	1,028	1,104	960	941	949	921	1,220
Yes (as a percent of total)	42.0	40.2	45.3	48.4	45.0	46.0	36.7
No (as a percent of total)	58.0	59.8	54.7	51.6	55.0	54.0	63.3
Average Number of Hours Transferred	54.4	54.7	54.3	52.1	50.2	50.6	51.7
Average Transfer GPA	2.98	3.04	3.08	3.06	3.11	3.12	3.10



STUDENT ~ ENROLLMENT

GENDER, LEVEL, & HOURS ~ FALL 2003 through FALL 2009

	Fall 2003		Fall 2004		Fall 2005		Fall 2006		Fall 2007		Fall 2008		Fall 2009	
	Male	Female	Male	Female	Male	Female	Male	Female	Male	Female	Male	Female	Male	Female
Undergraduate														
12 or more hours	7,080	9,731	7,062	9,552	7,021	9,614	7,166	9,528	7,164	9,435	7,312	9,624	7,628	9,662
Less than 12 hours	606	680	589	663	560	632	524	624	503	553	494	519	478	576
Sub Total	7,686	10,411	7,651	10,215	7,581	10,246	7,690	10,152	7,667	9,988	7,806	10,143	8,106	10,238
Graduate														
9 or more hours	425	718	454	691	464	672	443	678	450	666	451	661	468	735
Less than 9 hours	497	968	482	926	432	870	418	880	418	915	419	970	396	913
Sub Total	922	1,686	936	1,617	896	1,542	861	1,558	868	1,581	870	1,631	864	1,648
Total	8,608	12,097	8,587	11,832	8,477	11,788	8,551	11,710	8,535	11,569	8,676	11,774	8,970	11,886





STUDENT ~ ENROLLMENT
COLLEGE, RACIAL/ETHNIC & LEVEL ~ FALL 2009

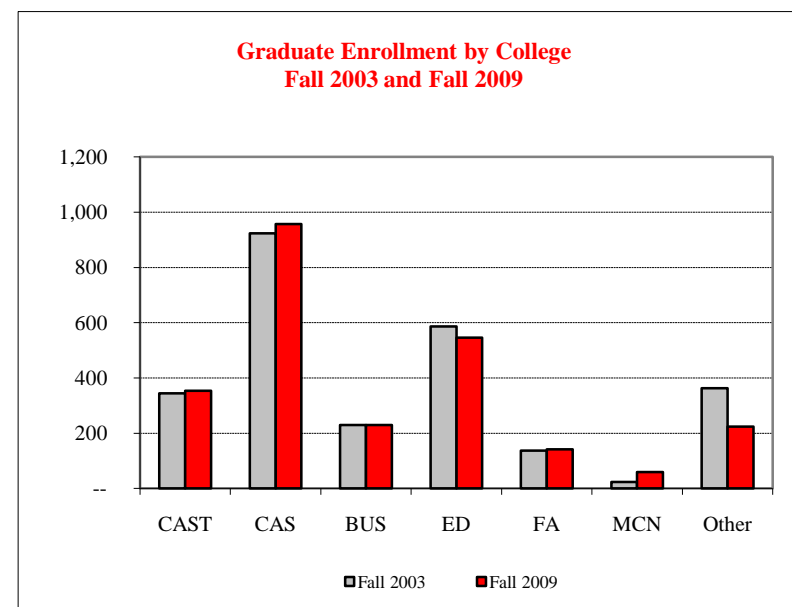
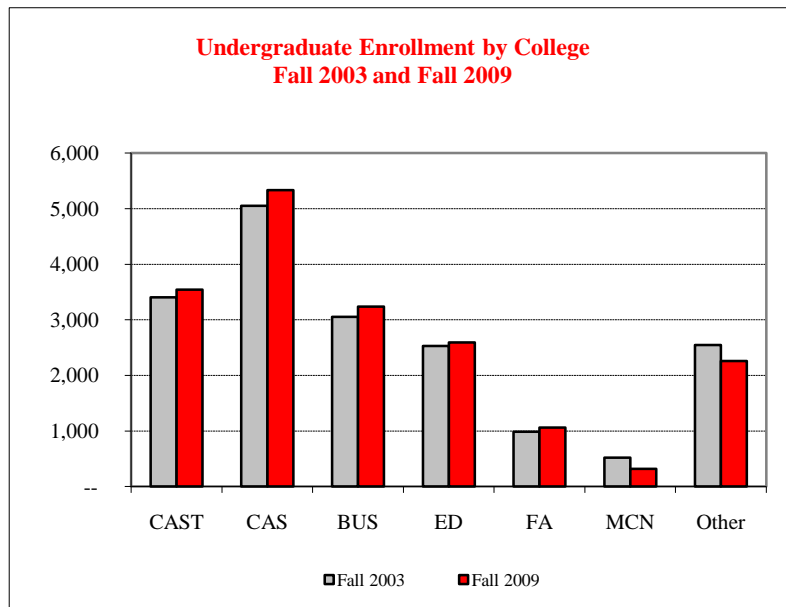
	<u>American Indian/ Alaskan Native</u>	<u>Black/Non- Hispanic</u>	<u>Asian/Pacific Islander</u>	<u>Hispanic</u>	<u>White/Non- Hispanic</u>	<u>Non-Resident Aliens</u>	<u>Not Reported</u>	<u>Total</u>
<u>Undergraduate</u>								
Applied Science and Technology	24	197	61	166	2,960	11	124	3,543
Arts and Sciences	27	324	111	254	4,339	35	243	5,333
Business	12	163	76	121	2,755	24	86	3,237
Education	7	68	45	104	2,294	2	73	2,593
Fine Arts	3	39	17	35	895	2	69	1,060
Mennonite College of Nursing	--	7	6	2	294	1	8	318
Other	6	217	48	134	1,723	49	83	2,260
Total	79	1,015	364	816	15,260	124	686	18,344

	<u>American Indian/ Alaskan Native</u>	<u>Black/Non- Hispanic</u>	<u>Asian/Pacific Islander</u>	<u>Hispanic</u>	<u>White/Non- Hispanic</u>	<u>Non-Resident Aliens</u>	<u>Not Reported</u>	<u>Total</u>
<u>Graduate</u>								
Applied Science and Technology	1	14	5	5	230	89	10	354
Arts and Sciences	2	35	23	27	714	112	44	957
Business	--	7	10	4	162	36	11	230
Education	1	31	5	12	480	9	8	546
Fine Arts	1	3	3	5	95	23	12	142
Mennonite College of Nursing	1	3	1	1	49	2	2	59
Other	2	13	4	1	194	6	4	224
Total	8	106	51	55	1,924	277	91	2,512

STUDENT ~ ENROLLMENT

COLLEGE & LEVEL ~ FALL 2003 and Fall 2009

	Fall 2003			Fall 2009			Percent Change		
	Undergraduate	Graduate	Total	Undergraduate	Graduate	Total	Undergraduate	Graduate	Total
Applied Science and Technology	3,403	344	3,747	3,543	354	3,897	4.1	2.9	4.0
Arts and Sciences	5,053	924	5,977	5,333	957	6,290	5.5	3.6	5.2
Business	3,055	230	3,285	3,237	230	3,467	6.0	--	5.5
Education	2,531	587	3,118	2,593	546	3,139	2.4	(7.0)	0.7
Fine Arts	987	137	1,124	1,060	142	1,202	7.4	3.6	6.9
Mennonite College of Nursing	522	23	545	318	59	377	(39.1)	156.5	(30.8)
Other	2,546	363	2,909	2,260	224	2,484	(11.2)	(38.3)	(14.6)
Total	18,097	2,608	20,705	18,344	2,512	20,856	1.4	(3.7)	0.7

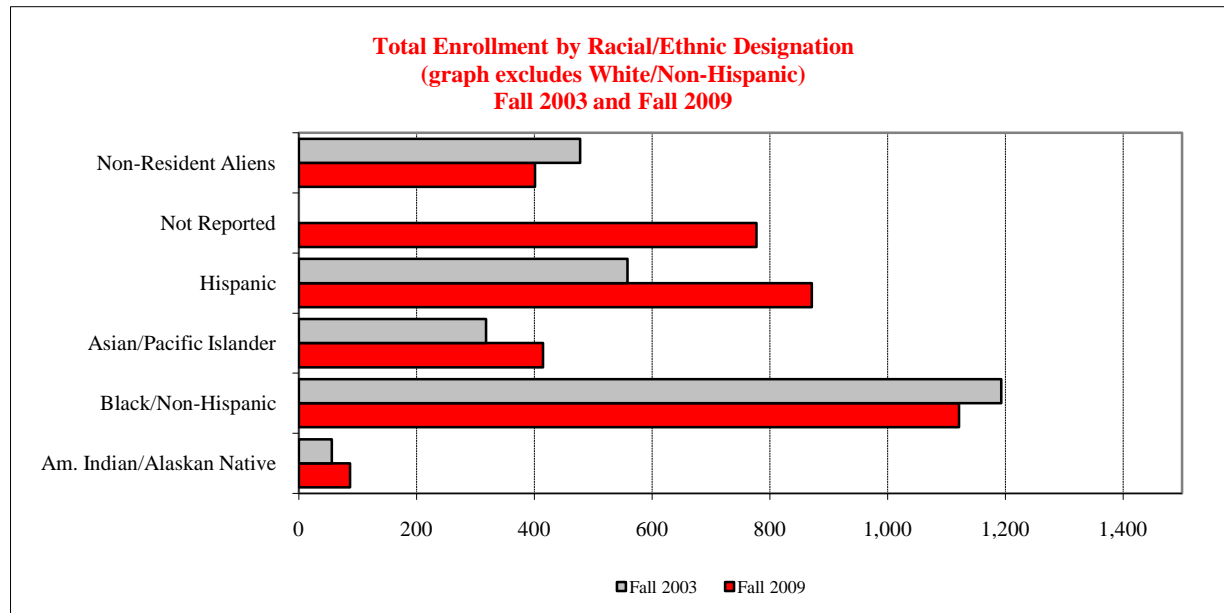




STUDENT ~ ENROLLMENT

RACIAL/ETHNIC & LEVEL ~ FALL 2003 and FALL 2009

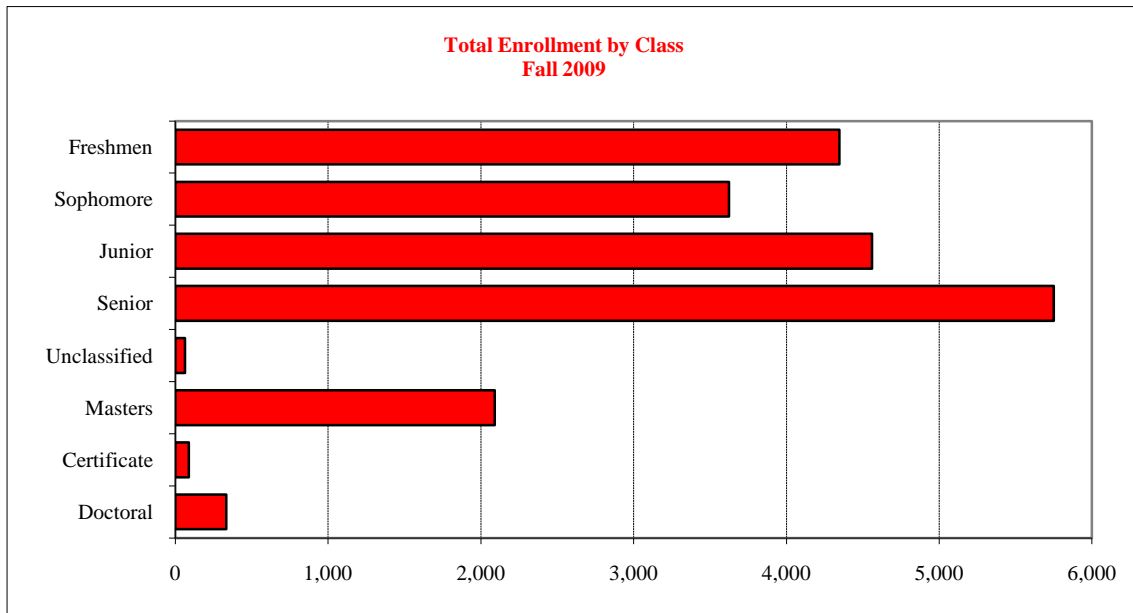
Racial/Ethnic Designation	Fall 2003			Fall 2009			Percent Change		
	Undergraduate	Graduate	Total	Undergraduate	Graduate	Total	Undergraduate	Graduate	Total
American Indian/Alaskan Native	48	8	56	79	8	87	64.6	--	55.4
Black/Non-Hispanic	1,061	132	1,193	1,015	106	1,121	(4.3)	(19.7)	(6.0)
Asian/Pacific Islander	272	46	318	364	51	415	33.8	10.9	30.5
Hispanic	520	38	558	816	55	871	56.9	44.7	56.1
White/Non-Hispanic	16,038	2,064	18,102	15,260	1,924	17,184	(4.9)	(6.8)	(5.1)
Not Reported	--	--	--	686	91	777	--	--	--
Non-Resident Aliens	158	320	478	124	277	401	(21.5)	(13.4)	(16.1)
Total	18,097	2,608	20,705	18,344	2,512	20,856	1.4	(3.7)	0.7





STUDENT ~ ENROLLMENT
CLASS AND AGE ~ FALL 2009

<u>Age as of</u> <u>September 1, 2009</u>	<u>Undergraduate</u>						<u>Graduate</u>				<u>Grand</u> <u>Total</u>
	<u>Freshmen</u>	<u>Sophomore</u>	<u>Junior</u>	<u>Senior</u>	<u>Unclassified</u>	<u>Total</u>	<u>Masters</u>	<u>Certificate</u>	<u>Doctoral</u>	<u>Total</u>	
Under 18	54	1	--	--	9	64	--	--	--	--	64
18 - 19	4,124	2,038	87	6	3	6,258	--	--	--	--	6,258
20 - 21	116	1,433	3,655	2,406	22	7,632	22	1	4	27	7,659
22 - 24	27	86	497	2,440	14	3,064	772	11	34	817	3,881
25 - 29	17	46	184	496	7	750	637	20	72	729	1,479
30 - 39	7	14	92	259	4	376	403	34	111	548	924
40 - 49	2	4	37	100	3	146	172	16	61	249	395
50 - 59	--	1	6	37	1	45	76	6	46	128	173
60 or over	--	--	2	6	1	9	8	--	6	14	23
Total	4,347	3,623	4,560	5,750	64	18,344	2,090	88	334	2,512	20,856

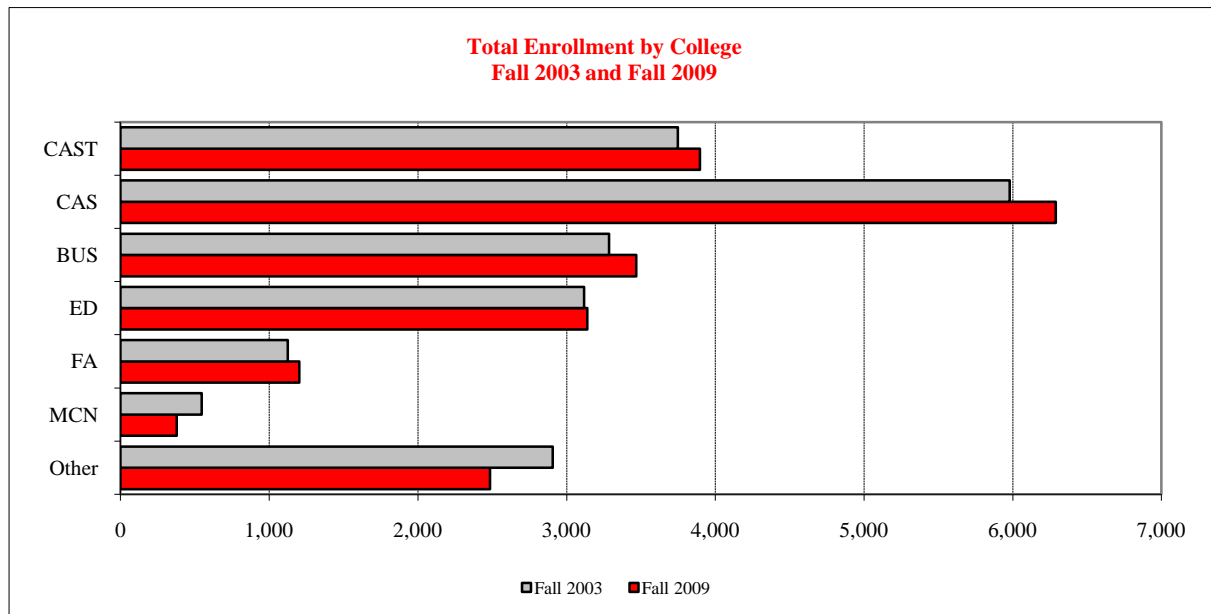




STUDENT ~ ENROLLMENT

TOTAL COLLEGE AND GENDER ~ FALL 2003 and FALL 2009

<u>College</u>	<u>Fall 2003</u>			<u>Fall 2009</u>			<u>Percent Change</u>		
	<u>Male</u>	<u>Female</u>	<u>Total</u>	<u>Male</u>	<u>Female</u>	<u>Total</u>	<u>Male</u>	<u>Female</u>	<u>Total</u>
Applied Science and Technology	2,176	1,571	3,747	2,204	1,693	3,897	1.3	7.8	4.0
Arts and Sciences	2,397	3,583	5,980	2,556	3,734	6,290	6.6	4.2	5.2
Business	1,865	1,420	3,285	2,184	1,283	3,467	17.1	(9.6)	5.5
Education	344	2,774	3,118	390	2,749	3,139	13.4	(.9)	0.7
Fine Arts	488	636	1,124	514	688	1,202	5.3	8.2	6.9
Mennonite College of Nursing	27	518	545	27	350	377	--	(32.4)	(30.8)
Other	1,311	1,595	2,906	1,095	1,389	2,484	(16.5)	(12.9)	(14.5)
Total	8,608	12,097	20,705	8,970	11,886	20,856	4.2	(1.7)	0.7

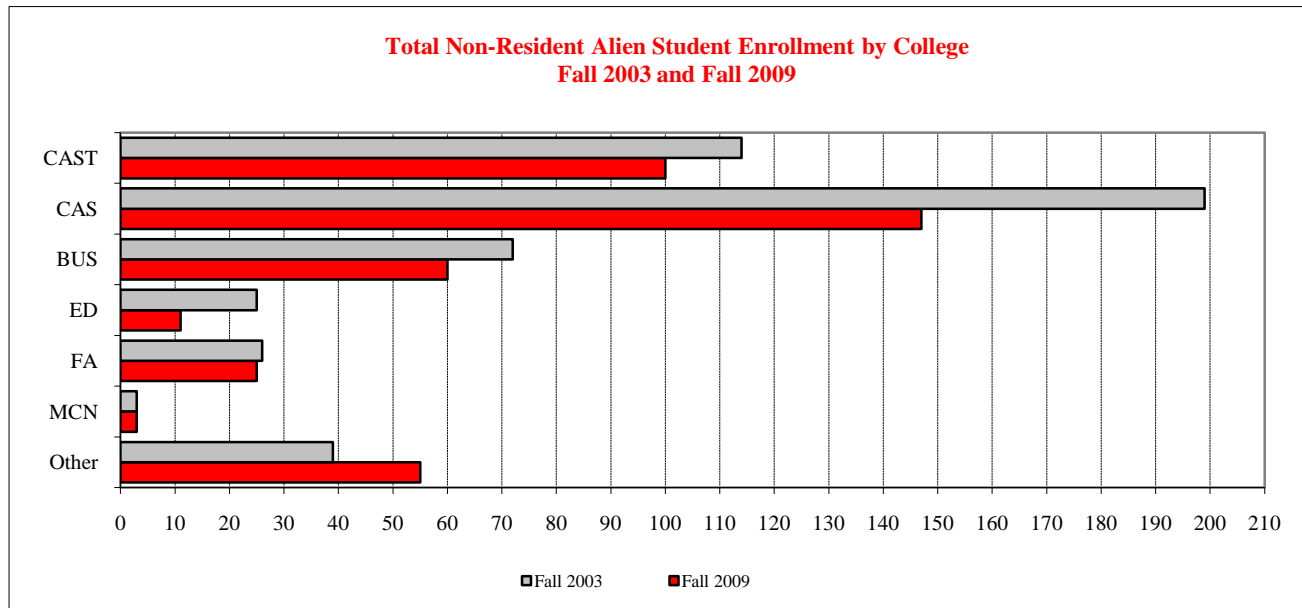




STUDENT ~ ENROLLMENT

NON-RESIDENT ALIEN STUDENTS ~ FALL 2003 & FALL 2009

	Fall 2003			Fall 2009			Percent Change		
	Undergraduate	Graduate	Total	Undergraduate	Graduate	Total	Undergraduate	Graduate	Total
Applied Science and Technology	34	80	114	11	89	100	(67.6)	11.3	(12.3)
Arts and Sciences	48	151	199	35	112	147	(27.1)	(25.8)	(26.1)
Business	32	40	72	24	36	60	(25.0)	(10.0)	(16.7)
Education	2	23	25	2	9	11	--	(60.9)	(56.0)
Fine Arts	4	22	26	2	23	25	(50.0)	4.5	(3.8)
Mennonite College of Nursing	3	--	3	1	2	3	(66.7)	--	--
Other	35	4	39	49	6	55	40.0	50.0	41.0
Total	158	320	478	124	277	401	(21.5)	(13.4)	(16.1)

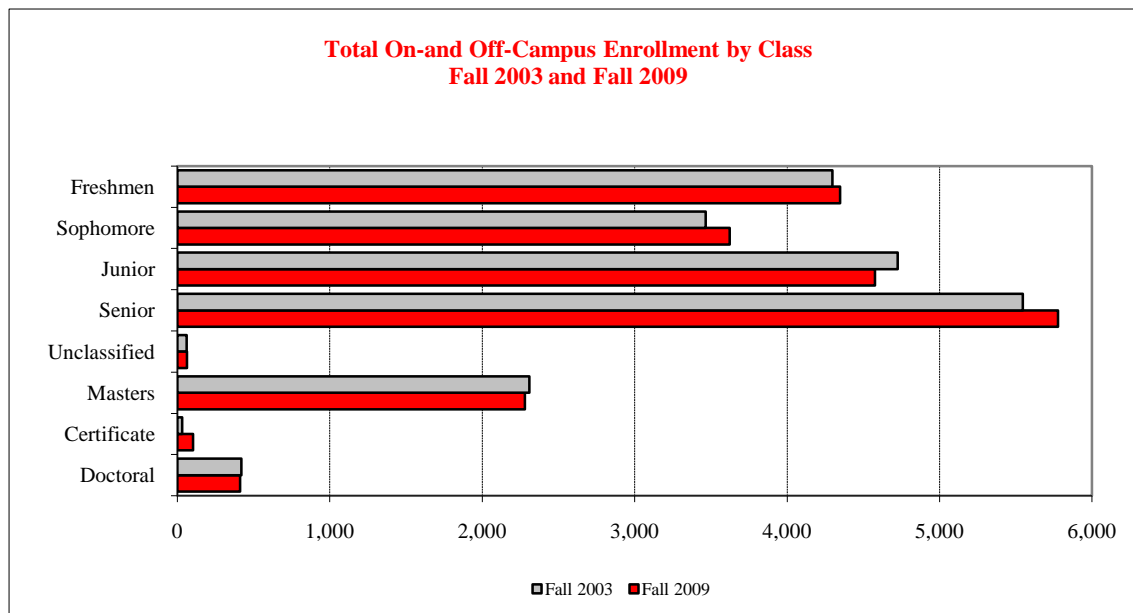




STUDENT ~ ENROLLMENT
ON/OFF-CAMPUS & CLASS ~ FALL 2003 and FALL 2009

	Fall 2003				Fall 2009				Percent Change			
	On-Campus	Off-Campus	Total	FTE ¹	On-Campus	Off-Campus	Total	FTE ¹	On-Campus	Off-Campus	Total	FTE ¹
Freshmen	4,297	--	4,297	4,105	4,347	1	4,348	4,198	1.2	--	1.2	2.3
Sophomore	3,466	--	3,466	3,304	3,623	1	3,624	3,484	4.5	--	4.6	5.4
Junior	4,726	--	4,726	4,346	4,560	17	4,577	4,228	(3.5)	--	(3.2)	(2.7)
Senior	5,546	--	5,546	4,810	5,750	26	5,776	5,010	3.7	--	4.1	4.2
Unclassified	62	--	62	28	64	--	64	39	3.2	--	3.2	37.9
Masters	2,218	92	2,310	1,686	2,090	190	2,280	1,741	(5.8)	106.5	(1.3)	3.2
Certificate	31	1	32	24	88	16	104	58	183.9	--	225.0	142.1
Doctoral	359	62	421	268	334	77	411	265	(7.0)	24.2	(2.4)	(1.2)
Total	20,705	155	20,860	18,571	20,856	328	21,184	19,022	0.7	111.6	1.6	2.4

¹ Full-Time Equivalency (FTE) Undergraduate - credit hours/15; Graduate = credit hours/9.

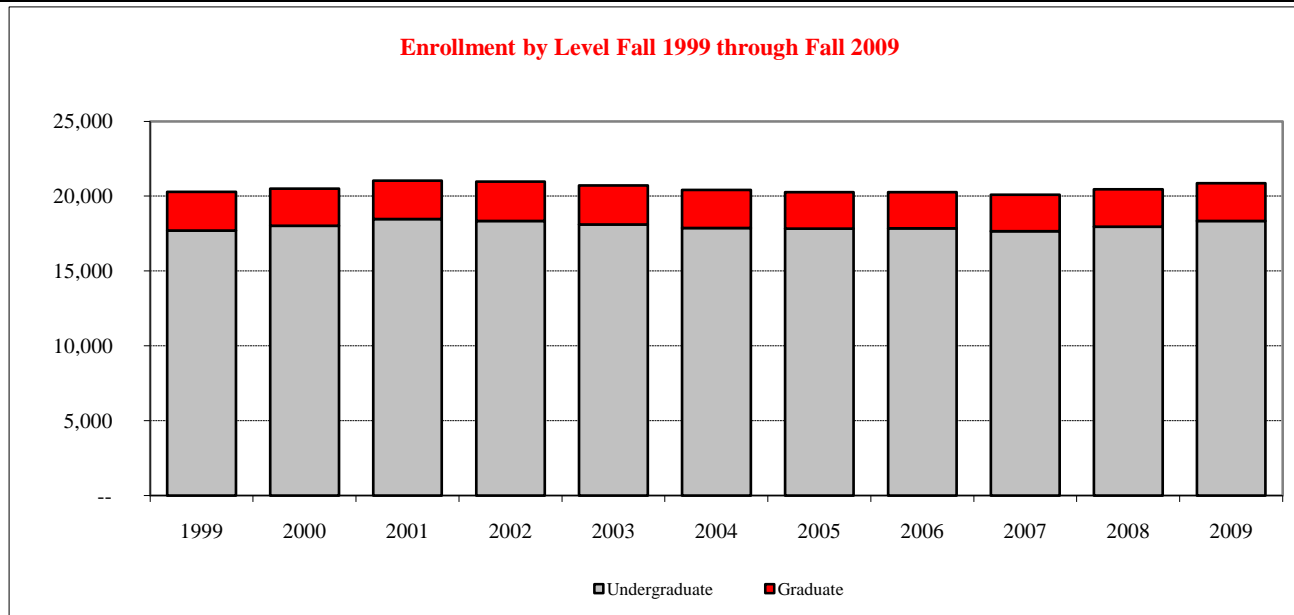
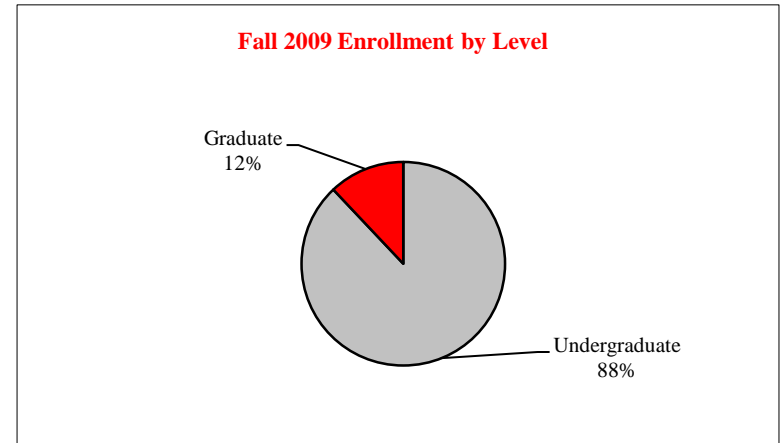




STUDENT ~ ENROLLMENT

LEVEL ~ FALL 1999 through FALL 2009

<u>Fall</u>	<u>Undergraduate</u>	<u>Graduate</u>	<u>Total</u>
1999	17,703	2,578	20,281
2000	18,018	2,486	20,504
2001	18,472	2,563	21,035
2002	18,352	2,623	20,975
2003	18,097	2,608	20,705
2004	17,866	2,553	20,419
2005	17,827	2,438	20,265
2006	17,842	2,419	20,261
2007	17,655	2,449	20,104
2008	17,949	2,501	20,450
2009	18,344	2,512	20,856





STUDENT ~ ENROLLMENT
CLASS, GENDER & RACIAL/ETHNIC ~ FALL 2009

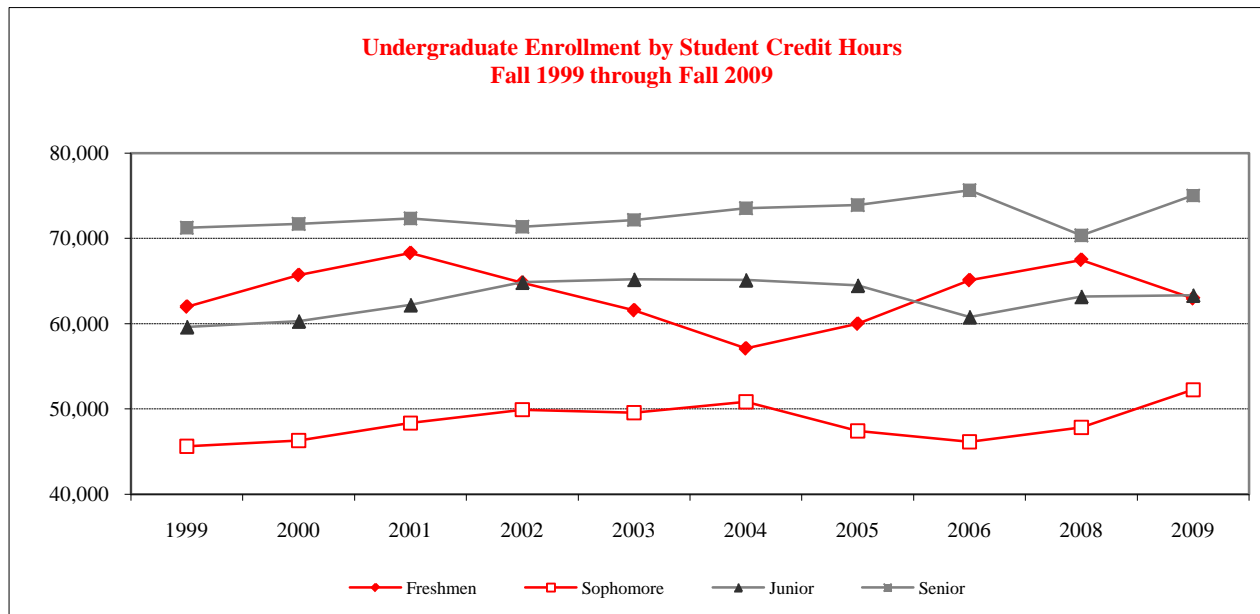
	<u>American Indian/ Alaskan Native</u>	<u>Black/Non- Hispanic</u>	<u>Asian/Pacific Islander</u>	<u>Hispanic</u>	<u>White/Non- Hispanic</u>	<u>Non-Resident Aliens</u>	<u>Not Reported</u>	<u>Total</u>
<u>Freshmen</u>								
Male	11	129	63	130	1,449	4	60	1,846
Female	6	224	51	155	1,967	9	89	2,501
<u>Sophomore</u>								
Male	6	71	26	72	1,342	12	70	1,599
Female	11	125	37	89	1,693	12	57	2,024
<u>Junior</u>								
Male	9	93	49	85	1,765	8	86	2,095
Female	14	119	31	92	2,124	11	74	2,465
<u>Senior</u>								
Male	10	107	43	81	2,153	15	123	2,532
Female	12	147	62	110	2,744	19	124	3,218
<u>Unclassified</u>								
Male	--	--	2	1	14	15	2	34
Female	--	--	--	1	9	19	1	30
<u>Undergraduate Total</u>								
Male	36	400	183	369	6,723	54	341	8,106
Female	43	615	181	447	8,537	70	345	10,238
<hr/>								
<u>Masters</u>								
Male	3	26	18	14	513	115	33	722
Female	4	56	26	32	1,085	120	45	1,368
<u>Certificate</u>								
Male	--	--	--	--	21	2	--	23
Female	--	--	2	--	60	--	3	65
<u>Doctoral</u>								
Male	1	9	1	3	90	12	3	119
Female	--	15	4	6	155	28	7	215
<u>Graduate Total</u>								
Male	4	35	19	17	624	129	36	864
Female	4	71	32	38	1,300	148	55	1,648



STUDENT ~ ENROLLMENT

CLASS LEVEL & CREDIT HOURS ~ FALL 1999 - FALL 2009

	<u>1999</u>	<u>2000</u>	<u>2001</u>	<u>2002</u>	<u>2003</u>	<u>2004</u>	<u>2005</u>	<u>2006</u>	<u>2007</u>	<u>2008</u>	<u>2009</u>
Freshmen	61,993	65,692	68,273	64,805	61,570	57,099	59,989	65,095	61,962	67,475	62,960
Sophomore	45,620	46,299	48,350	49,924	49,558	50,848	47,433	46,166	51,161	47,840	52,250
Junior	59,629	60,300	62,208	64,854	65,193	65,120	64,488	60,795	60,848	63,186	63,333
Senior	71,253	71,699	72,344	71,345	72,157	73,533	73,902	75,641	70,851	70,339	75,019
Unclassified	664	444	515	553	426	458	391	381	526	589	579
Masters	14,410	14,211	13,979	14,450	14,760	14,500	14,119	13,933	13,915	14,080	14,869
Certificate	202	208	208	204	208	289	248	393	507	476	437
Doctoral	1,552	1,594	1,942	2,068	2,073	2,122	2,091	2,053	1,969	1,937	2,026
Total Credit Hours	255,321	260,447	267,819	268,202	265,945	263,968	262,660	264,456	261,738	265,921	271,473





STUDENT ~ ENROLLMENT

Illinois Residents by County ~ Fall 2009

County	Undergrads	Graduates	County	Undergrads	Graduates	County	Undergrads	Graduates	
Adams	67	7	Hardin	--	--	Morgan	54	8	
Alexander	--	--	Henderson	1	--	Moultrie	11	3	
Bond	8	--	Henry	119	9	Ogle	89	5	
Boone	44	4	Iroquois	91	13	Peoria	377	95	
Brown	5	--	Jackson	9	1	Perry	2	1	
Bureau	91	19	Jasper	5	--	Piatt	66	7	
Calhoun	--	--	Jefferson	5	--	Pike	16	2	
Carroll	15	1	Jersey	14	2	Pope	--	--	
Cass	4	1	Jo Davies	22	1	Pulaski	--	--	
Champaign	379	47	Johnson	1	--	Putnam	15	4	
Christian	42	3	Kane	876	16	Randolph	4	1	
Clark	2	1	Kankakee	202	15	Richland	2	--	
Clay	2	--	Kendall	149	6	Rock Island	144	18	
Clinton	18	2	Knox	50	10	Saline	5	1	
Coles	34	2	Lake	1,194	29	Sangamon	324	45	
Cook	4,856	148	LaSalle	324	50	Schuyler	--	1	
Crawford	4	--	Lawrence	1	--	Scott	--	--	
Cumberland	5	1	Lee	28	7	Shelby	16	5	
DeKalb	86	5	Livingston	210	24	St. Clair	73	6	
DeWitt	70	17	Logan	72	17	Stark	5	--	
Douglas	17	5	Macon	146	36	Stephenson	54	6	
DuPage	1,832	64	Macoupin	38	3	Tazewell	416	90	
Edgar	9	--	Madison	116	7	Union	1	1	
Edwards	2	--	Marion	8	3	Vermilion	128	15	
Effingham	25	4	Marshall	17	4	Wabash	--	--	
Fayette	8	--	Mason	32	9	Warren	14	5	
Ford	59	12	Massac	1	--	Washington	3	3	
Franklin	2	1	McDonough	36	--	Wayne	1	--	
Fulton	45	15	McHenry	628	18	White	1	--	
Gallatin	1	--	McLean	1,469	827	Whiteside	74	6	
Greene	4	1	Menard	17	3	Will	1,369	44	
Grundy	186	7	Mercer	15	3	Williamson	10	--	
Hamilton	--	--	Monroe	21	4	Winnebago	342	18	
Hancock	18	3	Montgomery	34	2	Woodford	225	43	
							Illinois Total	17,732	1,922



Bold - McLean and Surrounding Counties
Red - Cook and Collar Counties



STUDENT ~ ENROLLMENT
STATE RESIDENCE ~ FALL 2009

<u>State</u>	<u>Undergraduates</u>	<u>Graduates</u>	<u>State</u>	<u>Undergraduates</u>	<u>Graduates</u>	<u>State</u>	<u>Undergraduates</u>	<u>Graduates</u>
Alabama	1	1	Maine	--	4	Pennsylvania	5	7
Alaska	3	--	Maryland	3	4	Rhode Island	1	--
Arizona	9	4	Massachusetts	1	3	South Carolina	1	1
Arkansas	2	2	Michigan	37	18	South Dakota	1	3
California	24	13	Minnesota	14	21	Tennessee	4	5
Colorado	8	10	Mississippi	1	1	Texas	25	13
Connecticut	2	2	Missouri	36	13	Utah	2	3
Delaware	--	1	Montana	2	1	Vermont	10	10
Dist. of Columbia	--	--	Nebraska	4	4	Virginia	--	1
Florida	14	6	Nevada	3	2	Washington	8	3
Georgia	11	11	New Hampshire	1	3	West Virginia	1	1
Hawaii	2	--	New Jersey	7	2	Wisconsin	51	22
Idaho	1	3	New Mexico	3	--	Wyoming	--	2
Illinois	17,732	1,922	New York	9	11	Territories	1	--
Indiana	60	18	North Carolina	5	3	U.S. Foreign	38	17
Iowa	25	22	North Dakota	--	1	Unknown	--	3
Kansas	11	7	Ohio	15	17			
Kentucky	3	8	Oklahoma	11	2			
Louisiana	6	2	Oregon	6	2	U.S. Total	18,220	2,235

Bold - Illinois and Top Ten Feeder States

- 94.2% of All Students are Residents of Illinois (Undergraduate 96.7%; Graduate 76.5%)
- 23.0% of All Students are Residents of Cook County (Undergraduate 26.5%; Graduate 5.9%)
- 53.1% of All Students are from Cook County and Collar counties (Undergraduate 58.6%; Graduate 12.7%)
- 8.7% of All Students are from McLean County (Undergraduate 8.0%; Graduate 32.9%)
- 24.6% of All Students are from McLean County and Surrounding Counties (Undergraduate 21.1%; Graduate 50.6%)
- Students come from 94 of the 102 Illinois Counties; all 50 of the United States; and 56 Countries outside the US.



STUDENT ~ ENROLLMENT
NON-RESIDENT ALIEN STUDENTS ~ FALL 2009

	<u>Undergraduates</u>	<u>Graduates</u>		<u>Undergraduates</u>	<u>Graduates</u>		<u>Undergraduates</u>	<u>Graduates</u>
AFRICA			EUROPE			MIDDLE EAST		
Algeria	1	--	Bulgaria	--	1	Iran	--	2
Cameroon	--	3	Denmark	--	1	Jordan	--	2
Ghana	--	6	Estonia	1	--	Saudi Arabia	1	--
Kenya	2	4	France	6	3	Syria	--	1
Nigeria	4	2	Germany Fed Rep	5	8	Turkey	--	5
Sierra Leone	--	1	Montenegro	1	--			
South Africa	1	--	Norway	--	1	NORTH AMERICA		
Tanzania	--	1	Portugal	1	--	Bermuda	1	--
Uganda	--	1	Serbia	4	2	Canada	9	1
Zimbabwe	--	2	Slovenia	1	--	United States	18,220	2,235
			Spain	1	1			
ASIA			Sweden	6	--	OCEANIA		
Armenia	--	2	United Kingdom	5	--	Australia	1	--
Bangladesh	--	1	LATIN AMERICA					
China	5	39	Caribbean					
Hong Kong	1	1	Barbados	3	1	Unknown	1	--
India	6	105	Cuba	1	--			
Japan	9	9	Central America					
Korea, South	28	10	Costa Rica	--	1			
Malaysia	7	3	Mexico	1	2			
Nepal	--	13	South America					
Pakistan	1	3	Argentina	1	--	Non-Resident Alien	124	277
Philippines	1	3	Brazil	--	1			
Russia	--	5	Chile	1	--			
Sri Lanka	1	2	Colombia	1	5			
Taiwan	4	9						
Thailand	--	11						
Uzbekistan	--	3						
Vietnam	1	--				Total Enrollment	18,344	2,512



DEGREES CONFERRED

COLLEGE ~ FISCAL YEAR 2003 through FISCAL YEAR 2009

<u>College</u>	<u>Undergraduate</u>						
	<u>FY 2003</u>	<u>FY 2004</u>	<u>FY 2005</u>	<u>FY 2006</u>	<u>FY 2007</u>	<u>FY 2008</u>	<u>FY 2009</u>
Applied Science and Technology	1,001	947	974	993	1,005	981	938
Arts and Sciences	1,280	1,359	1,437	1,378	1,522	1,430	1,367
Business	782	832	878	748	752	731	774
Education	812	680	625	692	630	598	576
Fine Arts	207	186	204	203	214	228	229
Mennonite College of Nursing	84	86	116	104	124	114	118
Other ¹	36	58	40	40	59	104	115
Total	4,202	4,148	4,274	4,158	4,306	4,186	4,117

<u>College</u>	<u>Graduate</u>						
	<u>FY 2003</u>	<u>FY 2004</u>	<u>FY 2005</u>	<u>FY 2006</u>	<u>FY 2007</u>	<u>FY 2008</u>	<u>FY 2009</u>
Applied Science and Technology	127	130	142	136	108	136	125
Arts and Sciences	264	269	297	288	282	243	281
Business	93	98	102	103	98	95	127
Education	225	173	183	225	171	221	184
Fine Arts	64	52	47	51	64	51	47
Mennonite College of Nursing	12	6	9	14	18	7	10
Total	785	728	780	817	741	753	774

<u>College</u>	<u>Total</u>						
	<u>FY 2003</u>	<u>FY 2004</u>	<u>FY 2005</u>	<u>FY 2006</u>	<u>FY 2007</u>	<u>FY 2008</u>	<u>FY 2009</u>
Applied Science and Technology	1,128	1,077	1,116	1,129	1,113	1,117	1,063
Arts and Sciences	1,544	1,628	1,734	1,666	1,804	1,673	1,648
Business	875	930	980	851	850	826	901
Education	1,037	853	808	917	801	819	760
Fine Arts	271	238	251	254	278	279	276
Mennonite College of Nursing	96	92	125	118	142	121	128
Other ¹	36	58	40	40	59	104	115
Total	4,987	4,876	5,054	4,975	5,047	4,939	4,891

¹ Other includes: Interdisciplinary Studies, and University Studies.



DEGREES CONFERRED

UNDERGRADUATE, GENDER & RACIAL/ETHNIC DESIGNATION

<u>Racial/Ethnic Designation</u>	<u>Male</u>						
	<u>FY 2003</u>	<u>FY 2004</u>	<u>FY 2005</u>	<u>FY 2006</u>	<u>FY 2007</u>	<u>FY 2008</u>	<u>FY 2009</u>
American Indian/Alaskan Native	4	6	2	2	8	1	3
Black/Non-Hispanic	84	77	76	63	59	68	73
Asian/Pacific Islander	20	30	31	29	22	29	31
Hispanic	43	39	37	50	60	62	48
White/Non-Hispanic	1,545	1,519	1,618	1,520	1,632	1,515	1,498
Not Reported	1	2	4	23	49	71	63
Non-Resident Alien	13	14	19	21	20	14	10
Total	1,710	1,687	1,787	1,708	1,850	1,760	1,726

<u>Racial/Ethnic Designation</u>	<u>Female</u>						
	<u>FY 2003</u>	<u>FY 2004</u>	<u>FY 2005</u>	<u>FY 2006</u>	<u>FY 2007</u>	<u>FY 2008</u>	<u>FY 2009</u>
American Indian/Alaskan Native	5	9	8	5	6	5	8
Black/Non-Hispanic	166	127	122	135	129	139	130
Asian/Pacific Islander	35	33	29	33	45	41	43
Hispanic	60	52	61	72	73	92	63
White/Non-Hispanic	2,212	2,220	2,246	2,160	2,151	2,043	2,030
Not Reported	1	1	2	25	35	78	100
Non-Resident Alien	13	19	19	20	17	28	17
Total	2,492	2,461	2,487	2,450	2,456	2,426	2,391

<u>Racial/Ethnic Designation</u>	<u>Total</u>						
	<u>FY 2003</u>	<u>FY 2004</u>	<u>FY 2005</u>	<u>FY 2006</u>	<u>FY 2007</u>	<u>FY 2008</u>	<u>FY 2009</u>
American Indian/Alaskan Native	9	15	10	7	14	6	11
Black/Non-Hispanic	250	204	198	198	188	207	203
Asian/Pacific Islander	55	63	60	62	67	70	74
Hispanic	103	91	98	122	133	154	111
White/Non-Hispanic	3,757	3,739	3,864	3,680	3,783	3,558	3,528
Not Reported	2	3	6	48	84	149	163
Non-Resident Alien	26	33	38	41	37	42	27
Total	4,202	4,148	4,274	4,158	4,306	4,186	4,117



DEGREES CONFERRED

GRADUATE, LEVEL & RACIAL/ETHNIC DESIGNATION

<u>Racial/Ethnic Designation</u>	<u>Masters</u>						
	<u>FY 2003</u>	<u>FY 2004</u>	<u>FY 2005</u>	<u>FY 2006</u>	<u>FY 2007</u>	<u>FY 2008</u>	<u>FY 2009</u>
American Indian/Alaskan Native	--	1	1	--	2	2	2
Black/Non-Hispanic	31	21	29	36	20	31	21
Asian/Pacific Islander	9	9	14	12	6	22	17
Hispanic	6	5	7	12	17	16	18
White/Non-Hispanic	585	536	568	588	529	493	532
Not Reported	--	--	--	9	27	18	28
Non-Resident Alien	79	106	96	98	70	81	95
Total	710	678	715	755	671	663	713

<u>Racial/Ethnic Designation</u>	<u>IBHE Approved Certificate</u>						
	<u>FY 2003</u>	<u>FY 2004</u>	<u>FY 2005</u>	<u>FY 2006</u>	<u>FY 2007</u>	<u>FY 2008</u>	<u>FY 2009</u>
American Indian/Alaskan Native	--	--	--	--	--	--	1
Black/Non-Hispanic	1	1	--	--	2	--	1
Asian/Pacific Islander	2	--	1	1	2	--	--
Hispanic	--	--	2	1	--	--	--
White/Non-Hispanic	16	6	13	8	17	33	12
Not Reported	--	--	--	--	--	1	1
Non-Resident Alien	1	--	--	--	--	--	1
Total	20	7	16	10	21	34	16

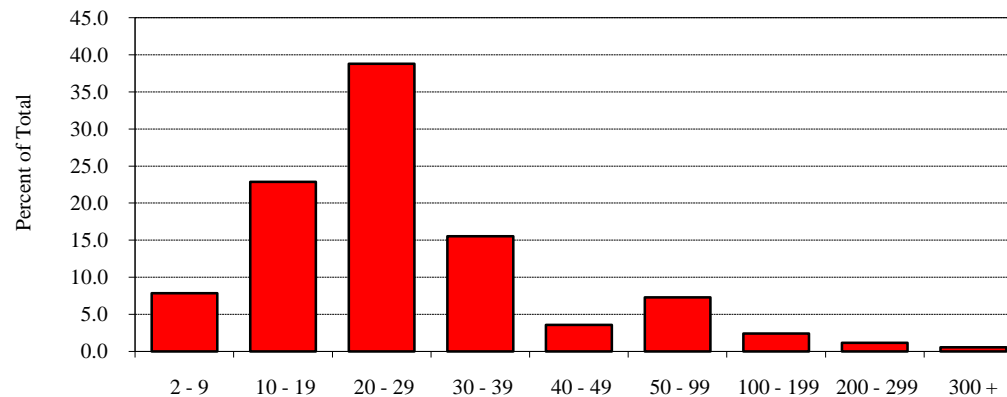
<u>Racial/Ethnic Designation</u>	<u>Doctoral</u>						
	<u>FY 2003</u>	<u>FY 2004</u>	<u>FY 2005</u>	<u>FY 2006</u>	<u>FY 2007</u>	<u>FY 2008</u>	<u>FY 2009</u>
American Indian/Alaskan Native	--	--	--	--	--	1	--
Black/Non-Hispanic	4	6	7	4	5	5	3
Asian/Pacific Islander	--	--	1	--	1	--	--
Hispanic	1	1	1	1	1	2	1
White/Non-Hispanic	29	29	33	39	31	34	31
Not Reported	--	--	--	--	--	--	--
Non-Resident Alien	21	7	7	8	11	14	10
Total	55	43	49	52	49	56	45



STUDENT ~ OTHER
CLASS SIZE ~ FALL 2006 through FALL 2009

Class Size ¹	Fall 2006			Fall 2007			Fall 2008			Fall 2009		
	Number	Percent	Cumulative Percent	Number	Percent	Cumulative Percent	Number	Percent	Cumulative Percent	Number	Percent	Cumulative Percent
2 - 9	193	8.1	8.1	209	8.8	8.8	201	8.3	8.3	194	7.8	7.8
10 - 19	551	23.0	31.0	540	22.7	31.5	567	23.3	31.6	567	22.9	30.7
20 - 29	909	37.9	69.0	926	38.9	70.4	935	38.4	70.0	962	38.8	69.5
30 - 39	375	15.6	84.6	354	14.9	85.3	377	15.5	85.5	385	15.5	85.1
40 - 49	91	3.8	88.4	82	3.4	88.7	69	2.8	88.3	88	3.6	88.6
50 - 99	172	7.2	95.6	163	6.8	95.5	174	7.1	95.4	180	7.3	95.9
100 - 199	64	2.7	98.2	65	2.7	98.3	68	2.8	98.2	60	2.4	98.3
200 - 299	33	1.4	99.6	29	1.2	99.5	32	1.3	99.5	28	1.1	99.4
300 +	9	0.4	100.0	12	0.5	100.0	11	0.5	100.0	14	0.6	100.0
Total	2,397	100.0	100.0	2,380	100.0	100.0	2,434	100.0	100.0	2,478	100.0	100.0

**Class Size Distribution
 Fall 2009**



¹ Breakdowns are based on *U.S. News and World Report* definition.

STUDENT ~ OTHER
TIME-TO-DEGREE ~ FALL 1998 through FALL 2005

	Fall Cohort							
	<u>1998</u>	<u>1999</u>	<u>2000</u>	<u>2001</u>	<u>2002</u>	<u>2003</u>	<u>2004</u>	<u>2005</u>
New Beginning Freshmen	2,749	3,080	3,265	3,340	3,108	3,097	2,834	3,179

	Number of Degree Recipients as of August 2009							
	<u>1998</u>	<u>1999</u>	<u>2000</u>	<u>2001</u>	<u>2002</u>	<u>2003</u>	<u>2004</u>	<u>2005</u>
Graduated from Fall Cohort	1,754	1,987	2,145	2,216	2,192	2,130	1,881	1,387

	Time-to-Degree for those who Graduated from Fall Cohort							
<u>Years</u>	<u>1998</u>	<u>1999</u>	<u>2000</u>	<u>2001</u>	<u>2002</u>	<u>2003</u>	<u>2004</u>	<u>2005</u>
Three or Fewer	0.5%	0.4%	0.2%	0.5%	0.4%	0.5%	0.8%	0.9%
Four	53.6%	55.6%	56.0%	58.8%	58.1%	60.3%	67.4%	99.1%
Five	37.2%	35.8%	35.7%	32.6%	34.9%	33.9%	31.8%	--
Six	5.8%	5.9%	5.6%	6.2%	5.7%	5.3%	--	--
Seven	1.7%	1.5%	1.6%	1.4%	0.9%	--	--	--
Eight	0.4%	0.6%	0.6%	0.4%	--	--	--	--
Nine	0.5%	0.2%	0.3%	--	--	--	--	--
Ten	0.3%	--	--	--	--	--	--	--
	100.0%	100.0%	100.0%	100.0%	100.0%	100.0%	100.0%	100.0%

For native undergraduate students (Fall cohort 2003) who graduated from Illinois State University, 60.8 percent finished their degree in four years or less. An additional 33.9 percent graduated in the fifth year, and 5.3 percent graduated in the sixth year (boxes).



Percent of New Beginning Freshmen that Return for Second Fall Term

	<u>2003</u>	<u>2004</u>	<u>2005</u>	<u>2006</u>	<u>2007</u>	<u>2008</u>
Fall to Fall Retention Rates						
All Students	83.6%	85.0%	84.0%	83.3%	83.4%	84.9%
Male Students	83.2	84.4	82.9	81.6	81.4	83.6
Female Students	83.9	85.3	84.7	84.5	84.8	85.6
Black/Non-Hispanic Students	71.8	73.5	65.9	63.2	73.3	80.7
Hispanic Students	68.3	80.4	79.4	75.4	73.2	77.9

New Beginning Freshmen Cohort Year

	<u>1998</u>	<u>1999</u>	<u>2000</u>	<u>2001</u>	<u>2002</u>	<u>2003</u>
Six Year Graduation Rates						
All Students	62.2%	63.2%	64.0%	65.1%	69.9%	68.8%
Male Students	57.5	57.6	59.6	59.1	66.7	66.5
Female Students	64.5	66.4	66.8	68.7	71.8	70.2
Black/Non-Hispanic Students	38.9	42.5	52.9	50.7	52.0	45.2
Hispanic Students	40.0	38.5	50.0	56.3	53.6	50.0



**ILLINOIS STATE
UNIVERSITY**
Illinois' first public university



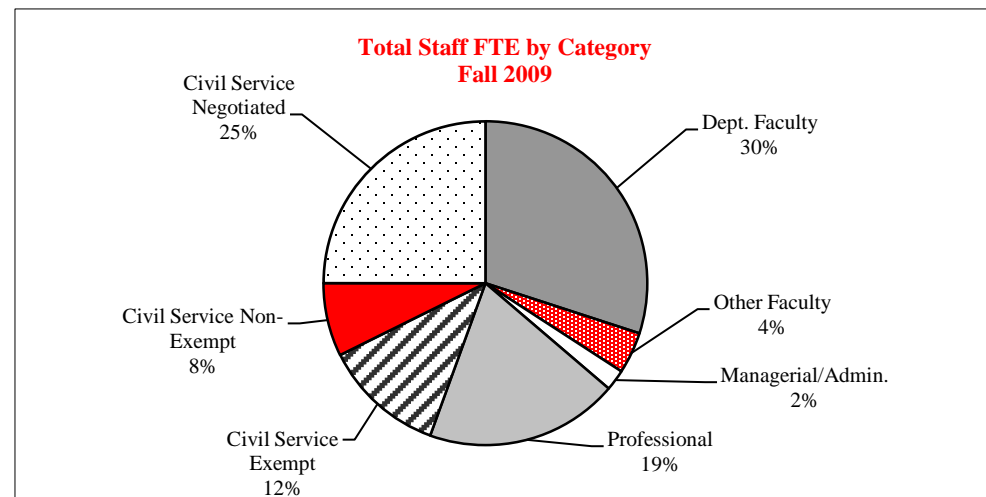
**ILLINOIS STATE
UNIVERSITY**
Illinois' first public university

FACULTY/STAFF



EMPLOYEE FULL-TIME EQUIVALENCY ~ FALL 2008 and FALL 2009

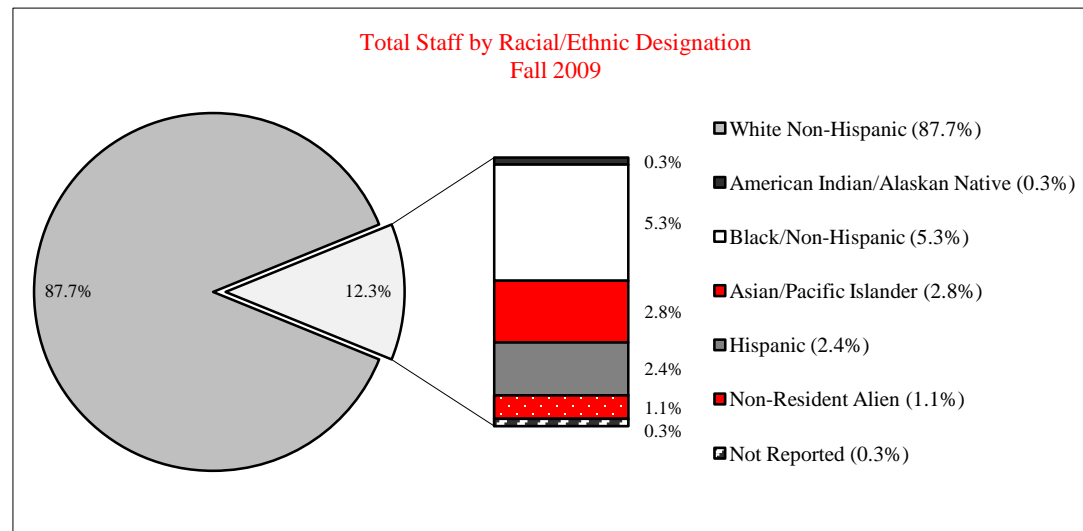
<u>Employee Category</u>	<u>Fall 2008</u>			<u>Fall 2009</u>		
	<u>Full-Time Number</u>	<u>Part-Time FTE</u>	<u>Total FTE</u>	<u>Full-Time Number</u>	<u>Part-Time FTE</u>	<u>Total FTE</u>
Departmental Faculty ¹	859	106.6	965.6	876	108.8	984.8
Non-Departmental Faculty	7	3.8	10.8	7	4.1	11.1
Library Faculty	30	0.0	30.0	33	0.0	33.0
Lab School Faculty	90	4.9	94.9	88	4.0	92.0
Managerial/Administrative	66	1.2	67.2	67	1.5	68.5
Professional	579	26.9	605.9	604	29.3	633.3
Civil Service						
Exempt	358	1.8	359.8	396	2.7	398.7
Non-Exempt	236	13.5	249.5	228	12.2	240.2
Negotiated	811	9.8	820.8	809	11.0	820.0
Civil Service Total	1,405	25.0	1,430.0	1,433	25.9	1,458.9
University Total	3,036	168.5	3,204.5	3,108	173.5	3,281.5



¹ Includes Department Chairs and part-time faculty whose major appointment is Administrative/Professional or Civil Service



	Faculty				Administrative/ Professional	Civil Service	Total
	Departmental ¹	Non-Dept.	Library	Lab School			
<u>Gender</u>							
Male	598	12	12	25	314	664	1,625
Female	582	21	21	70	415	808	1,917
<u>Racial/Ethnic Designation</u>							
American Indian/Alaskan Native	2	--	--	--	1	8	11
Black/Non-Hispanic	37	2	--	3	52	95	189
Asian/Pacific Islander	70	1	--	1	11	17	100
Hispanic	29	1	--	1	16	39	86
White/Non-Hispanic	1,013	28	31	90	635	1,309	3,106
Non-Resident Alien	24	--	2	--	10	2	38
Not Reported	5	1	--	--	4	2	12
Total	1,180	33	33	95	729	1,472	3,542



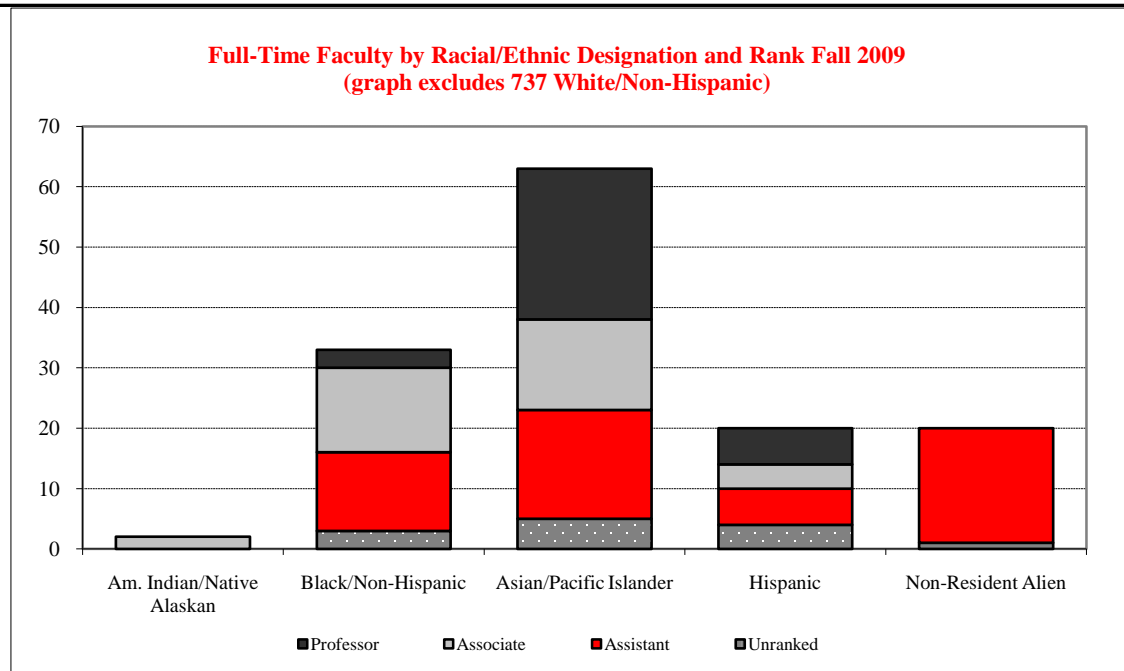
¹ Includes Department Chairs



RANK AND RACIAL/ETHNIC DESIGNATION ~ FALL 2009

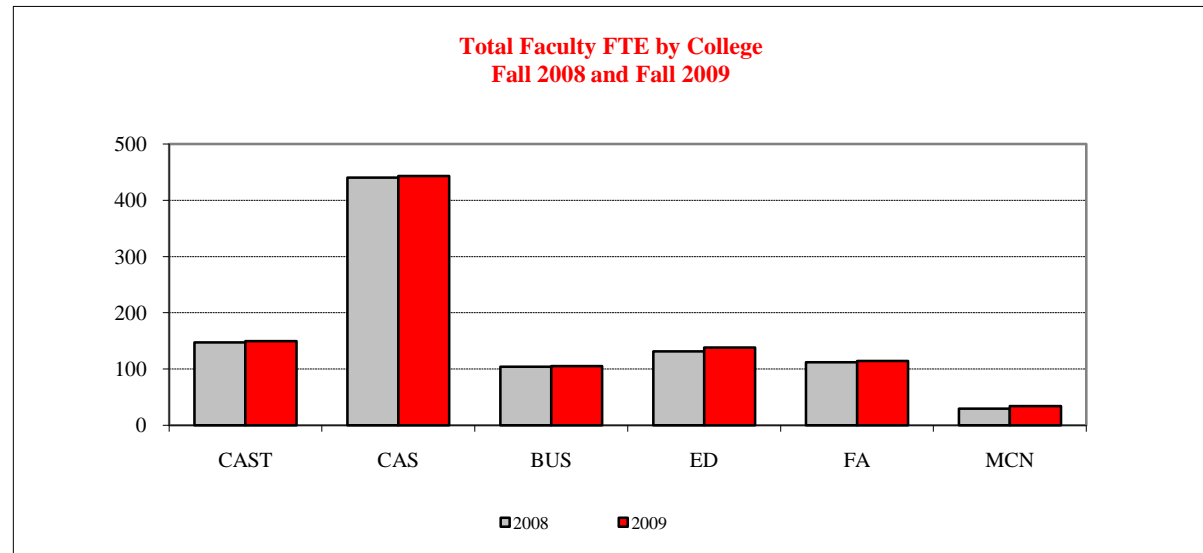
<u>Faculty - Full-Time</u>	American Indian/ Native Alaskan	Black/ Non-Hispanic	Asian/ Pacific Islander	Hispanic	White/ Non-Hispanic	Not Reported	Non-Resident Alien	<u>Total</u>
Professor	--	3	25	6	200	--	--	234
Associate Professor	2	14	15	4	229	--	--	264
Assistant Professor	--	13	18	6	156	--	19	212
Unranked	--	3	5	4	152	1	1	166
Total	2	33	63	20	737	1	20	876

<u>Faculty - Part-Time</u>	American Indian/ Native Alaskan	Black/ Non-Hispanic	Asian/ Pacific Islander	Hispanic	White/ Non-Hispanic	Not Reported	Non-Resident Alien	<u>Total</u>
Unranked	--	4	7	9	276	4	4	304



FTE¹ BY COLLEGE, GENDER & TENURE STATUS ~ FALL 2008 and FALL 2009

College	Fall 2008					Fall 2009				
	Tenured/Tenure Track		Non-Tenure Track		Total	Tenured/Tenure Track		Non-Tenure Track		Total
	Male	Female	Male	Female		Male	Female	Male	Female	
Applied Science and Technology	67.0	34.0	17.5	29.1	147.5	71.0	36.0	14.9	27.6	149.5
Arts and Sciences	199.0	133.0	45.7	62.8	440.5	201.0	132.0	44.2	66.2	443.4
Business	59.0	22.0	12.5	10.8	104.3	56.0	24.0	16.1	9.3	105.4
Education	30.0	44.0	11.1	46.5	131.6	29.0	52.0	9.0	48.1	138.2
Fine Arts	50.0	44.0	7.8	10.1	111.9	51.0	44.0	7.8	11.3	114.1
Mennonite College of Nursing	0.0	12.0	1.1	16.7	29.8	2.0	12.0	0.8	19.4	34.2
<u>Total</u>	405.0	289.0	95.6	176.0	965.6	410.0	300.0	92.9	181.9	984.8

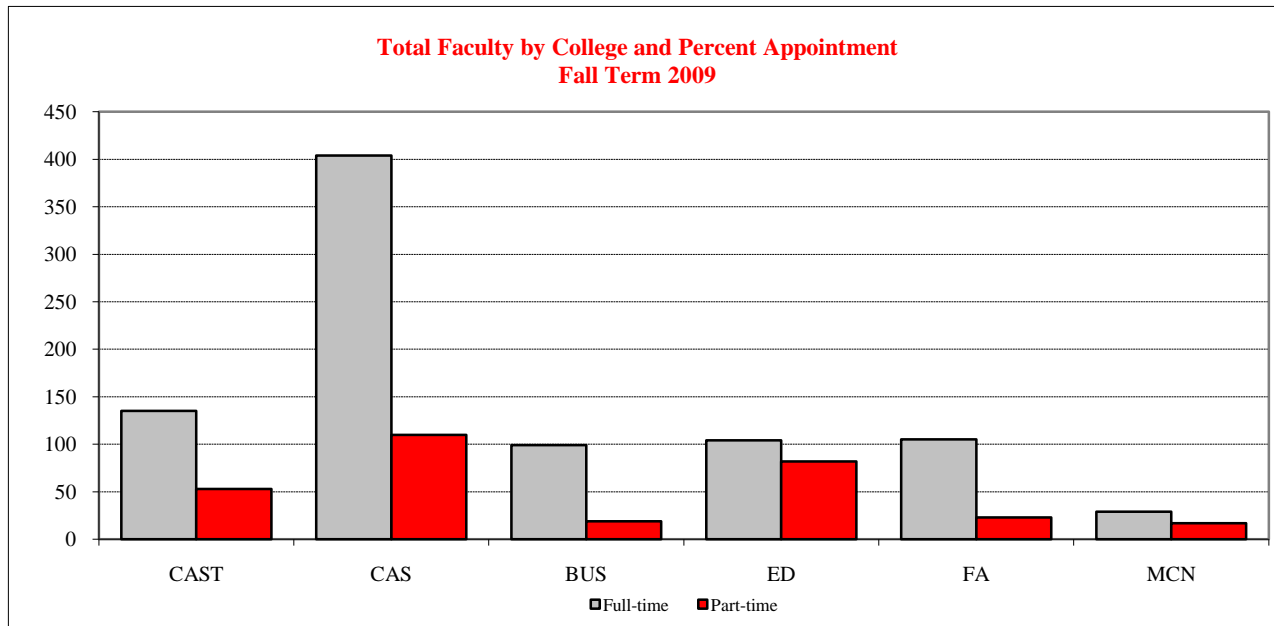


¹ Full-Time Equivalent (FTE) Faculty



COLLEGE & PERCENT APPOINTMENT ~ FALL 2003 through FALL 2009

<u>College</u>	<u>2003</u>		<u>2004</u>		<u>2005</u>		<u>2006</u>		<u>2007</u>		<u>2008</u>		<u>2009</u>	
	<u>Full</u>	<u>Part</u>	<u>Full</u>	<u>Part</u>	<u>Full</u>	<u>Part</u>	<u>Full</u>	<u>Part</u>	<u>Full</u>	<u>Part</u>	<u>Full</u>	<u>Part</u>	<u>Full</u>	<u>Part</u>
Applied Science and Technology	131	44	131	47	129	49	129	51	124	60	128	67	135	53
Arts and Sciences	405	80	393	90	392	100	408	92	398	106	406	113	404	110
Business	94	18	93	14	91	11	95	10	100	10	101	11	99	19
Education	96	77	87	83	87	84	92	80	95	83	99	89	104	82
Fine Arts	103	13	109	11	109	15	109	14	105	20	101	26	105	23
Mennonite College of Nursing	17	6	18	12	21	15	23	10	21	14	24	18	29	17
Total	846	238	831	257	829	274	856	257	843	293	859	324	876	304

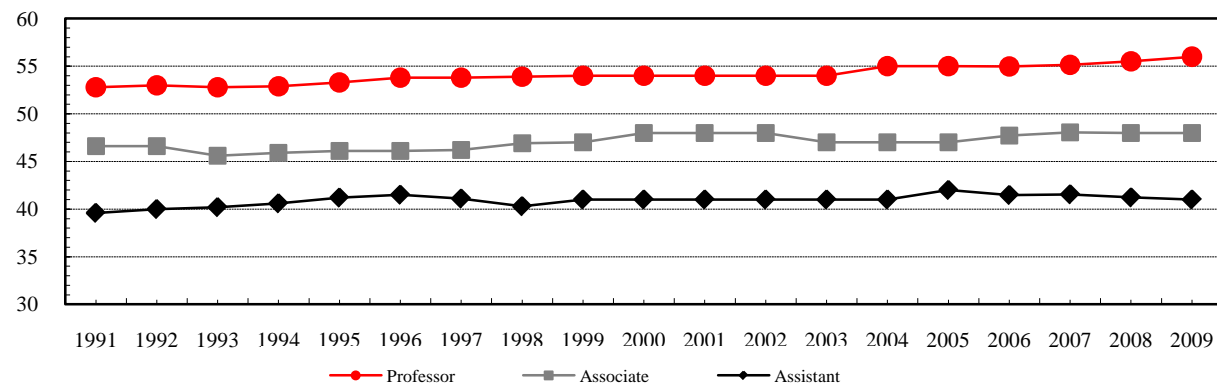


FACULTY

TENURED/TENURE TRACK DEPARTMENTAL, AGE BY RANK ~ FALL 2009

<u>Age¹ Range</u>	<u>Professor</u>	<u>Associate Professor</u>	<u>Assistant Professor</u>	<u>Total</u>
29 or Less	--	--	13	13
30 - 34	--	6	42	48
35 - 39	1	33	53	87
40 - 44	11	60	44	115
45 - 49	40	60	19	119
50 - 54	52	43	22	117
55 - 59	54	44	16	114
60 - 64	46	13	1	60
65 or Over	30	5	2	37
Total	234	264	212	710

**Average Age¹ of Tenured/Tenure Track
 Departmental Faculty
 Fall 1991 through Fall 2009**



¹ Age is calculated as of December 31st of the reported year.



FACULTY/STAFF
FALL TO FALL RETENTION RATES

	<u>Year of Initial Hire</u>						
	<u>2003</u>	<u>2004</u>	<u>2005</u>	<u>2006</u>	<u>2007</u>	<u>2008</u>	<u>2009</u>
<u>New Full-Time Assistant Professors</u>							
Number of New Hires	42	31	25	33	35	40	46
Percent that Returned 2nd Fall	100.0	90.3	100.0	97.0	94.3	100.0	--
Percent that Returned 4th Fall	92.9	74.2	80.0	81.8	--	--	--
Percent that Returned 6th Fall	73.8	71.0	--	--	--	--	--
<u>New Full-Time Non Tenure-Track Faculty</u>							
Number of New Hires	20	14	30	42	22	31	24
Percent that Returned 2nd Fall	55.0	64.3	60.0	57.1	72.7	71.0	--
Percent that Returned 4th Fall	30.0	64.3	33.3	38.1	--	--	--
Percent that Returned 6th Fall	25.0	57.1	--	--	--	--	--
<u>New Full-Time Lab School Faculty</u>							
Number of New Hires	4	10	4	12	10	13	4
Percent that Returned 2nd Fall	75.0	100.0	75.0	83.3	90.0	92.3	--
Percent that Returned 4th Fall	75.0	50.0	50.0	58.3	--	--	--
Percent that Returned 6th Fall	75.0	30.0	--	--	--	--	--
<u>New Full-Time Administrative/Professional</u>							
Number of New Hires	52	70	93	95	97	70	75
Percent that Returned 2nd Fall	73.1	77.1	80.6	75.8	78.4	81.4	--
Percent that Returned 4th Fall	55.8	50.0	52.7	53.7	--	--	--
Percent that Returned 6th Fall	38.5	42.9	--	--	--	--	--
<u>New Full-Time Civil Service</u>							
Number of New Hires	27	24	111	93	131	131	127
Percent that Returned 2nd Fall	100.0	91.7	91.0	90.3	86.3	86.3	--
Percent that Returned 4th Fall	88.9	75.0	84.7	80.6	--	--	--
Percent that Returned 6th Fall	70.4	66.7	--	--	--	--	--

A new hire is defined as a staff member who was present that fall but not in the previous fall. He/she may have been hired any time between the two falls. A rehired person is counted as a new hire, if a year had elapsed between leaving and rehire. A person who changed appointment types, that was still employed by the University in a subsequent fall at a 50% or more FTE, was counted as being retained. Faculty include departmental faculty only.



	Year of Initial Hire						
	<u>2003</u>	<u>2004</u>	<u>2005</u>	<u>2006</u>	<u>2007</u>	<u>2008</u>	<u>2009</u>
<u>New Full-Time Assistant Professors</u>							
Number of New Hires	3	3	4	6	4	8	9
Percent that Returned 2nd Fall	100.0	66.7	100.0	83.3	100.0	100.0	--
Percent that Returned 4th Fall	100.0	66.7	75.0	83.3	--	--	--
Percent that Returned 6th Fall	33.3	66.7	--	--	--	--	--
	Year of Initial Hire						
	<u>2003</u>	<u>2004</u>	<u>2005</u>	<u>2006</u>	<u>2007</u>	<u>2008</u>	<u>2009</u>
<u>New Full-Time Administrative/Professional</u>							
Number of New Hires	12	10	6	11	15	12	13
Percent that Returned 2nd Fall	75.0	90.0	66.7	72.7	86.7	75.0	--
Percent that Returned 4th Fall	41.7	60.0	50.0	36.4	--	--	--
Percent that Returned 6th Fall	25.0	50.0	--	--	--	--	--
	Year of Initial Hire						
	<u>2003</u>	<u>2004</u>	<u>2005</u>	<u>2006</u>	<u>2007</u>	<u>2008</u>	<u>2009</u>
<u>New Full-Time Civil Service</u>							
Number of New Hires	3	2	18	13	25	15	9
Percent that Returned 2nd Fall	100.0	50.0	88.9	76.9	88.0	66.7	--
Percent that Returned 4th Fall	66.7	50.0	88.9	76.9	--	--	--
Percent that Returned 6th Fall	66.7	50.0	--	--	--	--	--

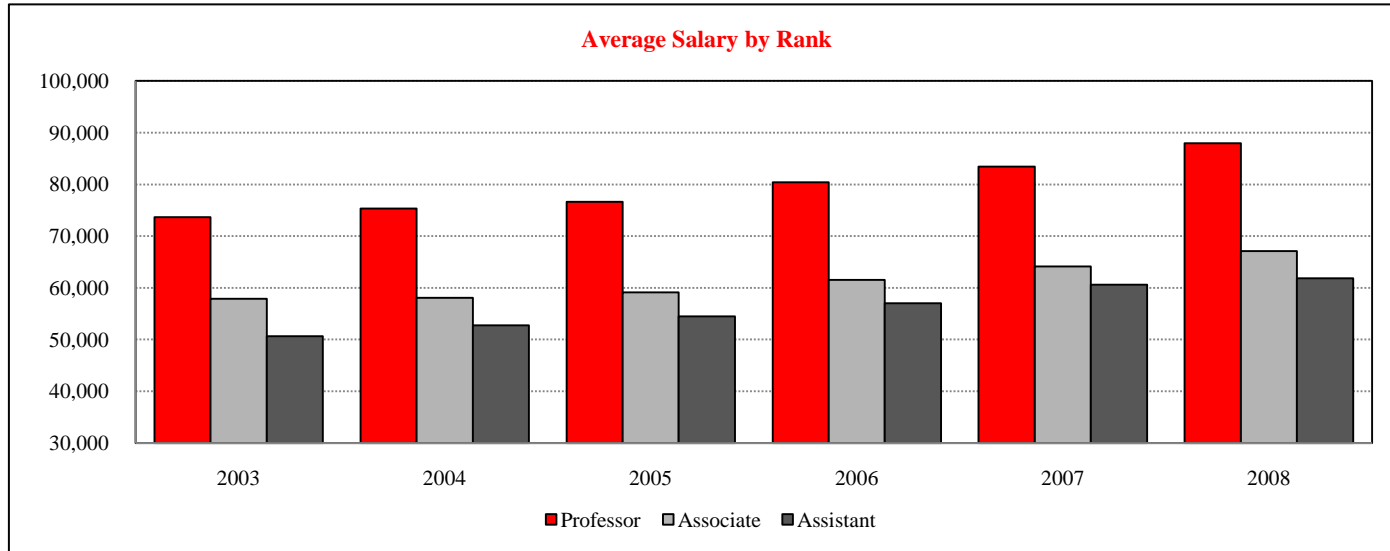


FACULTY/STAFF

AVERAGE ANNUAL SALARY ~ FALL 2003 THROUGH FALL 2008

Faculty - Full-Time	Average Annual Salary for Tenured/Tenure Track Faculty ¹											
	Fall 2003		Fall 2004		Fall 2005		Fall 2006		Fall 2007		Fall 2008	
	Number	Average	Number	Average	Number	Average	Number	Average	Number	Average	Number	Average
Professor	230	73,684	234	75,319	235	76,653	240	80,408	236	83,458	233	87,965
Associate Professor	183	57,909	197	58,090	210	59,101	223	61,514	226	64,108	247	67,125
Assistant Professor	289	50,618	277	52,749	245	54,485	228	57,041	218	60,632	214	61,838

¹Data reported annually to American Association of University Professors.





**ILLINOIS STATE
UNIVERSITY**
Illinois' first public university



**ILLINOIS STATE
UNIVERSITY**
Illinois' first public university

RESOURCES





TOTAL EXPENDITURES & MANDATORY TRANSFERS ~ FY 2005 through 2009

(Dollars in thousands)

	<u>Total Operating Funds by Fund Type</u>				
	<u>Fiscal Year 2005</u>	<u>Fiscal Year 2006</u>	<u>Fiscal Year 2007</u>	<u>Fiscal Year 2008</u>	<u>Fiscal Year 2009</u>
State Appropriated Tax Funds and					
University Income Fund	\$143,945.4	\$155,310.5	\$164,753.6	\$174,895.9	\$191,923.4
Gifts, Grants and Contracts	32,314.6	35,076.6	34,066.6	35,606.1	33,864.0
Agency	50,378.1	43,134.4	43,070.9	45,422.9	48,609.3
Bond Revenue/Other Auxiliary	46,087.9	49,947.0	51,076.8	54,904.0	58,849.1
Total ¹	\$272,726.0	\$283,468.5	\$292,967.9	\$310,828.9	\$333,245.8

	<u>State Appropriated Funds by Object Class</u>				
	<u>Fiscal Year 2005</u>	<u>Fiscal Year 2006</u>	<u>Fiscal Year 2007</u>	<u>Fiscal Year 2008</u>	<u>Fiscal Year 2009</u>
Personal Services	\$107,337.9	\$111,510.2	\$120,862.8	\$125,890.4	\$133,269.5
Contractual	16,800.0	20,967.5	18,604.6	22,022.2	26,548.5
Equipment and Books	6,395.4	8,320.9	8,026.7	8,316.2	10,444.1
Commodities	2,736.7	2,592.0	2,669.6	2,530.1	2,644.3
Other	6,310.7	7,479.3	9,946.1	11,399.9	14,140.3
Group Health Insurance	3,078.0	3,078.3	3,078.3	3,078.3	3,078.3
Medicare	1,286.7	1,362.3	1,565.5	1,658.8	1,798.4
Total	\$143,945.4	\$155,310.5	\$164,753.6	\$174,895.9	\$191,923.4

	<u>State Appropriated Funds by Functional Classification</u>				
	<u>Fiscal Year 2005</u>	<u>Fiscal Year 2006</u>	<u>Fiscal Year 2007</u>	<u>Fiscal Year 2008</u>	<u>Fiscal Year 2009</u>
Instruction	\$81,102.5	\$85,015.6	\$88,904.1	\$92,100.3	\$97,183.3
Operation and Maintenance	18,768.6	21,511.7	24,335.1	28,307.1	32,651.2
Institutional Support	14,947.2	16,363.0	18,148.4	18,572.9	22,202.2
Organized Research	2,553.4	2,980.8	1,887.1	2,136.4	2,738.3
Public Service	2,703.2	2,735.6	3,017.5	3,660.8	4,545.9
Academic Support	13,090.0	14,599.6	15,915.0	16,324.4	16,757.0
Student Services	6,415.5	7,663.6	7,902.6	9,056.9	10,968.8
Group Health Insurance	3,078.3	3,078.3	3,078.3	3,078.3	3,078.3
Medicare	1,286.7	1,362.3	1,565.5	1,658.8	1,798.4
Total	\$143,945.4	\$155,310.5	\$164,753.6	\$174,895.9	\$191,923.4

¹ Excludes payments made on behalf of the University (e.g. retirement contributions); \$43.8 million in FY05, \$42.2 million in FY06, \$47.7 million in FY07, \$53.5 million in FY08 and \$59.6 million in FY09.



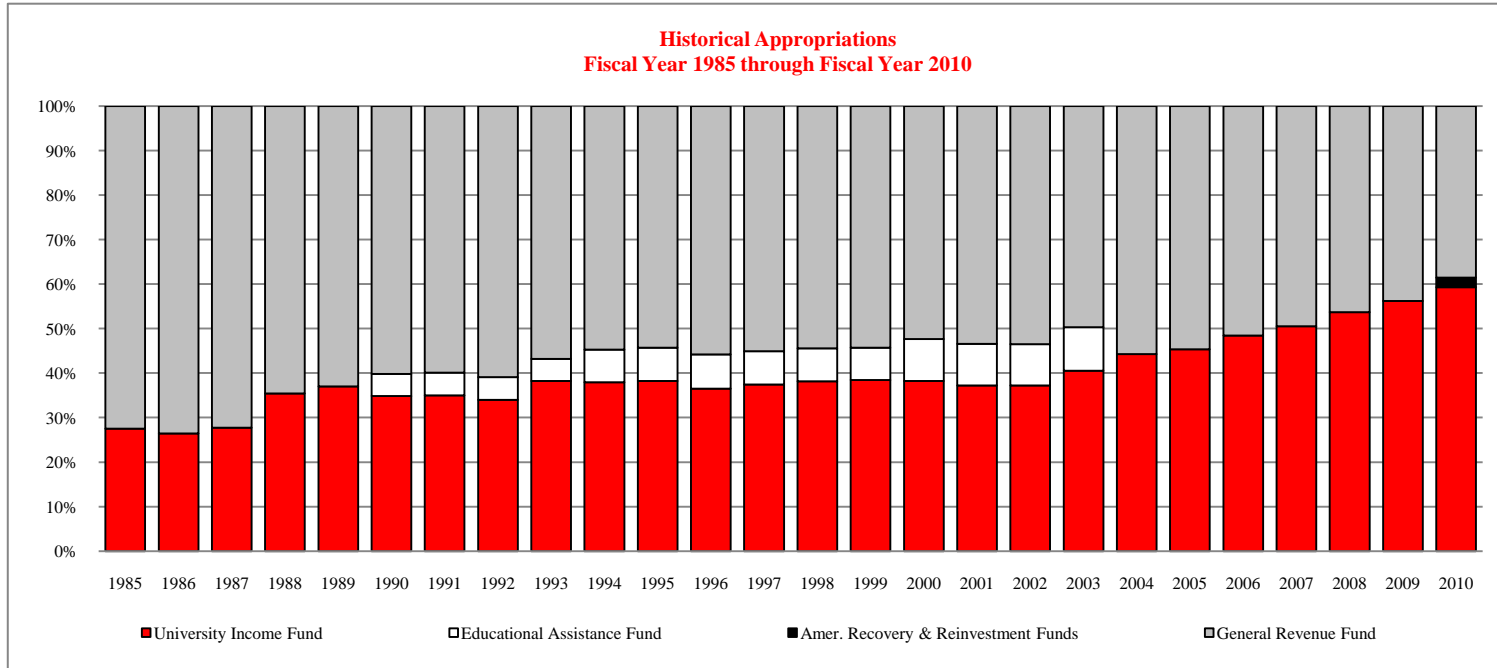
HISTORICAL APPROPRIATIONS ~ FISCAL YEARS 2006 through 2010

(dollars in thousands)

Historical Appropriations and University Income Fund for Operations and Grants by Fund Source¹

	<u>Fiscal Year 2006</u>	<u>Fiscal Year 2007</u>	<u>Fiscal Year 2008</u>	<u>Fiscal Year 2009</u>	<u>Fiscal Year 2010</u>
General Revenue Fund	\$80,452.0	\$81,457.5	\$82,986.8	\$85,096.4	\$80,452.0
American Recovery & Reinvestment Funds	N/A	N/A	N/A	N/A	\$4,644.0
University Income Fund	<u>75,580.2</u>	<u>83,280.7</u>	<u>96,206.9</u>	<u>109,351.4</u>	<u>123,806.4</u>
Total Appropriation	\$156,032.2	\$164,738.2	\$179,193.7	\$194,447.8	\$208,902.4

¹ Excludes Retirement





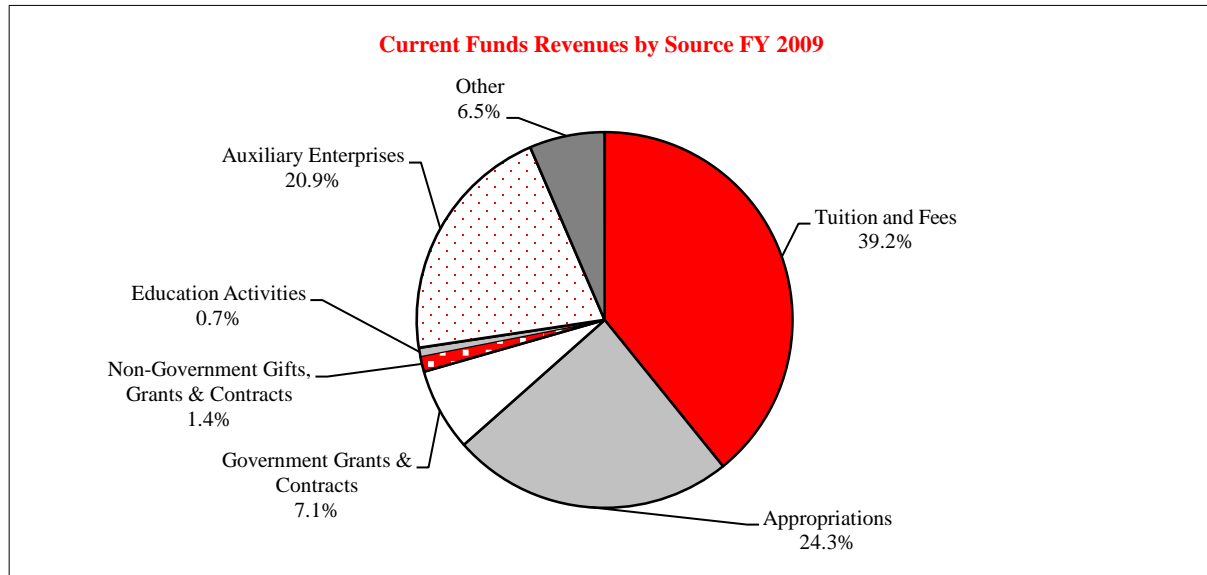
CURRENT FUNDS REVENUES BY SOURCE ~ FISCAL YEARS 2008 AND 2009

<u>Source</u>	<u>Fiscal Year 2008</u>		<u>Fiscal Year 2009</u>	
	<u>Amount (\$000)</u>	<u>Percent of Total</u>	<u>Amount (\$000)</u>	<u>Percent of Total</u>
Tuition and Fees	\$122,216	37.1	\$137,168	39.2
State Government Tax Funds Appropriations	82,987	25.2	85,096	24.3
Government Grants and Contracts				
Federal	20,617	6.3	22,096	6.3
State	2,906	0.9	2,695	0.8
Non-Governmental Gifts, Grants and Contracts	4,975	1.5	4,800	1.4
Sales & Services of Education Activities	2,622	0.8	2,461	0.7
Sales & Services of Auxiliary Enterprises	71,253	21.7	73,182	20.9
Other Sources	21,488	6.5	22,681	6.5
Total	\$329,065 ¹	100.0%	\$350,180 ²	100.0%

¹ Excludes \$53.5 million in Payments on Behalf of the University.

² Excludes \$59.6 million in Payments on Behalf of the University.

Source: Report of the Comptroller



RESOURCES

SPONSORED RESEARCH, INSTRUCTION, CREATIVE WORKS, & SERVICE

Submissions (Proposals submitted between July 1 and June 30)

	Fiscal Year 2006		Fiscal Year 2007		Fiscal Year 2008		Fiscal Year 2009	
	Amount	Number	Amount	Number	Amount	Number	Amount	Number
Research	\$37,382,033	132	\$37,225,623	161	\$25,245,877	142	\$32,886,935	157
Instruction	9,086,459	107	8,883,901	89	14,892,071	81	7,445,880	83
Public Service	3,878,898	40	13,999,692	53	9,672,354	38	10,137,560	41
Other	4,529,753	27	2,591,988	19	3,881,537	44	3,518,412	36
Total	\$54,877,143	306	\$62,701,204	322	\$53,691,839	305	\$53,988,787	317

Awards (Approved between July 1 and June 30)

	Fiscal Year 2006		Fiscal Year 2007		Fiscal Year 2008		Fiscal Year 2009	
	Amount	Number	Amount	Number	Amount	Number	Amount	Number
Research	\$7,638,262	89	\$6,893,719	81	\$7,056,879	83	\$6,040,193	76
Instruction	5,859,754	94	4,815,984	91	4,767,867	82	2,808,740	70
Public Service	2,935,127	42	4,037,888	45	7,107,953	37	6,320,333	39
Other	2,703,835	25	2,347,904	17	3,377,914	30	3,223,801	31
Total	\$19,136,978	250	\$18,095,495	234	\$22,310,613	232	\$18,393,067	216

Awards by Type of Funding

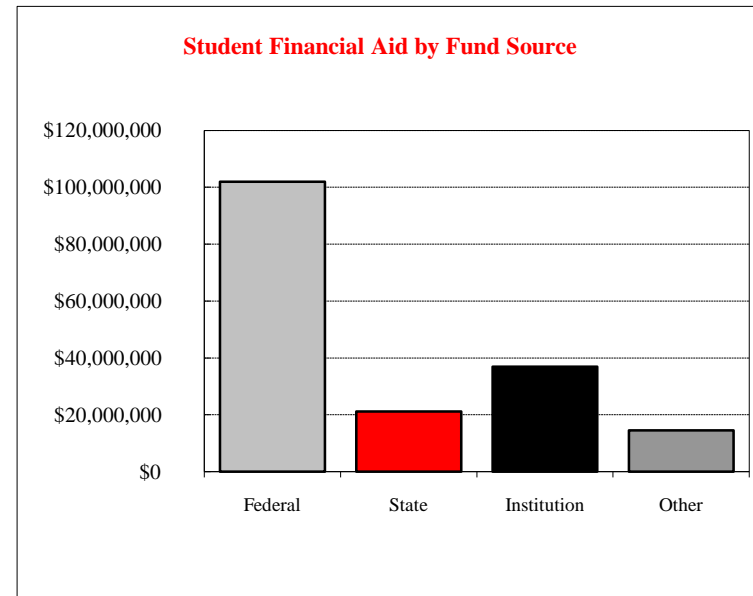
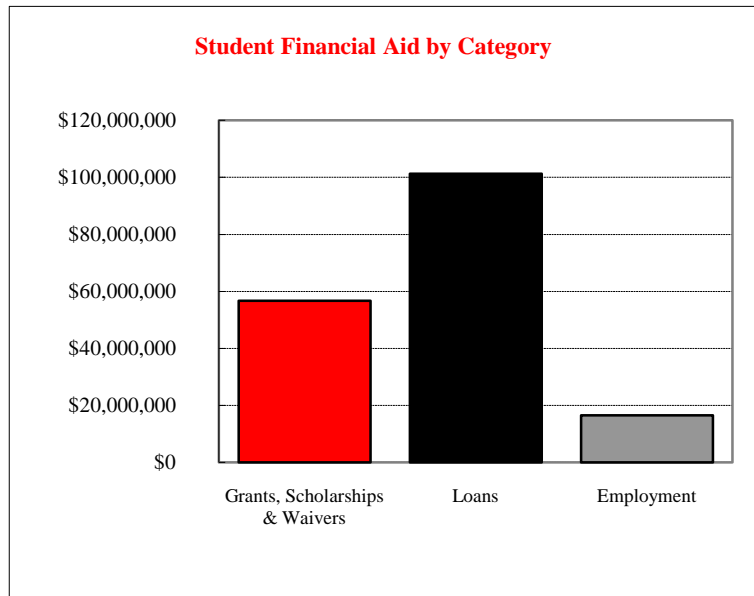
	Fiscal Year 2006		Fiscal Year 2007		Fiscal Year 2008		Fiscal Year 2009	
	Amount	Percent	Amount	Percent	Amount	Percent	Amount	Percent
Federal Awards	\$9,342,249	48.8	\$6,791,781	37.5	\$7,628,305	34.2	\$4,654,072	25.3
Federal Flow-through	2,287,440	12.0	2,636,180	14.6	3,291,098	14.8	4,491,864	24.4
State Awards	4,609,945	24.1	3,707,312	20.5	3,866,501	17.3	4,425,082	24.1
Corporate Awards	141,500	0.7	404,530	2.2	466,792	2.1	237,382	1.3
Other Awards	2,755,844	14.4	4,555,692	25.2	7,057,917	31.6	4,584,667	24.9
Total Awards	\$19,136,978	100.0	\$18,095,495	100.0	\$22,310,613	100.0	\$18,393,067	100.0



STUDENT FINANCIAL AID & INSTITUTIONAL SUPPORT ~ FISCAL YEAR 2009¹

Type	Fund Source				Total	Number Awarded
	Federal	State	Institution	Other		
Grants, Scholarships & Waivers	\$12,187,495	\$21,195,597	\$21,158,625	\$2,184,923	\$56,726,640	20,962
Loans	\$88,940,317	--	--	\$12,331,505	\$101,271,822	22,003
Employment	\$824,678	--	\$15,741,391	--	\$16,566,069	5,664
Total	\$101,952,490	\$21,195,597	\$36,900,016	\$14,516,428	\$174,564,531	

Approximately 72.5 percent of all students who attend the University receive assistance through loans, scholarships, tuition waivers, grants, and employment.



¹ The Financial Aid Fiscal Year is Fall, Spring and Summer.

UNDERGRADUATE STUDENT TUITION & FEE RATES

		<u>Per Credit Hour</u>		<u>Full-Time (based on 15 credit hours per semester) Annual</u>					
<u>Resident</u>	<u>School Year</u>	<u>Tuition Plan¹</u>	<u>Tuition Rate</u>	<u>Required Fees</u>	<u>Insurance required of all students</u>				
					<u>taking 9 or more credit hours</u>	<u>Tuition</u>	<u>Required Fees</u>	<u>Total</u>	
Current Rates	2009-10	New ²	276.00	64.30	322.00	8,280.00	1,929.00	10,531.00	
		Continuing 2 Yr	256.00	60.40	322.00	7,680.00	1,812.00	9,814.00	
		Continuing 3 Yr	233.00	56.91	322.00	6,990.00	1,707.30	9,019.30	
		Continuing 4 Yr	205.00	52.45	322.00	6,150.00	1,573.50	8,045.50	
		Continuing 5+ Yr	180.00	46.70	322.00	5,400.00	1,401.00	7,123.00	
	Historical Rates	2008-09	New ²	256.00	60.40	322.00	7,680.00	1,812.00	9,814.00
			Continuing 2 Yr	233.00	56.91	322.00	6,990.00	1,707.30	9,019.30
			Continuing 3 Yr	205.00	52.45	322.00	6,150.00	1,573.50	8,045.50
			Continuing 4 Yr	180.00	46.70	322.00	5,400.00	1,401.00	7,123.00
			Continuing 5+ Yr	160.00	43.20	322.00	4,800.00	1,296.00	6,418.00
	2007-08	New ²	233.00	56.91	322.00	6,990.00	1,707.30	9,019.30	
		Continuing 2 Yr	205.00	52.45	322.00	6,150.00	1,573.50	8,045.50	
		Continuing 3 Yr	180.00	46.70	322.00	5,400.00	1,401.00	7,123.00	
		Continuing 4 Yr	160.00	43.20	322.00	4,800.00	1,296.00	6,418.00	
		Continuing 5+ Yr	137.43	40.57	322.00	4,122.90	1,217.10	5,662.00	
Non-Resident	Current Rates	2009-10	New ²	477.00	64.30	322.00	14,310.00	1,929.00	16,561.00
			Continuing 2 Yr	477.00	60.40	322.00	14,310.00	1,812.00	16,444.00
			Continuing 3 Yr	477.00	56.91	322.00	14,310.00	1,707.30	16,339.30
			Continuing 4 Yr	428.00	52.45	322.00	12,840.00	1,573.50	14,735.50
			Continuing 5+ Yr	376.00	46.70	322.00	11,280.00	1,401.00	13,003.00
	Historical Rates	2008-09	New ²	477.00	60.40	322.00	14,310.00	1,812.00	16,444.00
			Continuing 2 Yr	477.00	56.91	322.00	14,310.00	1,707.30	16,339.30
			Continuing 3 Yr	428.00	52.45	322.00	12,840.00	1,573.50	14,735.50
			Continuing 4 Yr	376.00	46.70	322.00	11,280.00	1,401.00	13,003.00
			Continuing 5+ Yr	334.00	43.20	322.00	10,020.00	1,296.00	11,638.00
	2007-08	New ²	477.00	56.91	322.00	14,310.00	1,707.30	16,339.30	
		Continuing 2 Yr	428.00	52.45	322.00	12,840.00	1,573.50	14,735.50	
		Continuing 3 Yr	376.00	46.70	322.00	11,280.00	1,401.00	13,003.00	
		Continuing 4 Yr	334.00	43.20	322.00	10,020.00	1,296.00	11,638.00	
		Continuing 5+ Yr	286.43	40.57	322.00	8,592.90	1,217.10	10,132.00	

¹ Freeze rates, for undergraduate tuition (in-state/out-of-state) and general fees, shall depend on qualified primary major(s)/sequence(s) carried within the individual's catalog year as of census day of the last undergraduate semester attended within the four continuous calendar years after being classified as first enrolled.

² New - Students enrolled for their first semester in a degree-seeking program and in attendance on census day.



Resident

		<u>Per Credit Hour</u>	
<u>School Year</u>	<u>Tuition Plan</u>	<u>Tuition Rate</u>	<u>Required Fees</u>
Current Rates	2009-10	All	\$220.00 \$64.30
Historical Rates	2008-09	All	204.00 60.40
	2007-08	All	194.00 56.91
	2006-07	All	185.00 52.45
	2005-06	All	170.00 46.70
	2004-05	All	145.00 43.20
	2003-04	New ¹	138.43 40.57
		Continuing	122.49 40.57
	2002-03 ²	All	122.49 40.57
2001-02	All	112.14 40.57	

<u>Full-Time (based on 9 credit hours per semester) Annual</u>			
<u>Insurance required of all students</u>			
<u>taking 9 or more credit hours</u>	<u>Tuition</u>	<u>Required Fees</u>	<u>Total</u>
\$322.00	\$3,960.00	\$1,157.40	\$5,439.40
322.00	\$3,672.00	\$1,087.20	\$5,081.20
322.00	3,492.00	1,024.38	4,838.38
316.00	3,330.00	944.10	4,590.10
290.00	3,060.00	840.60	4,190.60
232.00	2,610.00	777.60	3,619.60
190.00	2,491.74	730.26	3,412.00
190.00	2,204.82	730.26	3,125.08
180.00	2,204.82	730.26	3,115.08
172.00	2,018.52	730.26	2,920.78

Non-Resident

		<u>Per Credit Hour</u>	
<u>School Year</u>	<u>Tuition Plan</u>	<u>Tuition Rate</u>	<u>Required Fees</u>
Current Rates	2009-10	All	\$457.00 \$64.30
Historical Rates	2008-09	All	424.00 60.40
	2007-08	All	404.00 56.91
	2006-07	All	386.00 52.45
	2005-06	All	355.00 46.70
	2004-05	All	303.00 43.20
	2003-04	New ¹	288.43 40.57
		Continuing	265.00 40.57
	2002-03 ²	All	265.00 40.57
2001-02	All	245.00 40.57	

<u>Full-Time (based on 9 credit hours per semester) Annual</u>			
<u>Insurance required of all students</u>			
<u>taking 9 or more credit hours</u>	<u>Tuition</u>	<u>Required Fees</u>	<u>Total</u>
\$322.00	\$8,226.00	\$1,157.40	\$9,705.40
322.00	\$7,632.00	\$1,087.20	\$9,041.20
322.00	7,272.00	1,024.38	8,618.38
316.00	6,948.00	944.10	8,208.10
290.00	6,390.00	840.60	7,520.60
232.00	5,454.00	777.60	6,463.60
190.00	5,191.74	730.26	6,112.00
190.00	4,770.00	730.26	5,690.26
180.00	4,770.00	730.26	5,680.26
172.00	4,410.00	730.26	5,312.26

¹ New - Students enrolled for their first semester in a degree-seeking program and in attendance on census day.

² Prior to fall 2002 fees were capped at 12 hours per semester; Beginning in fall 2002 fees charged for each credit hour up to and including 16 hours per semester - no additional fees charged for credit hours in excess of 16 hours per semester until Fall 2006. Currently fees are charged per credit hour carried.



	<u>Fiscal Year</u>				
	<u>2005</u>	<u>2006</u>	<u>2007</u>	<u>2008</u>	<u>2009</u>
<u>Patron Services and Usage</u>					
Building Usage Gate Count	695,221	551,618	513,143	496,841	510,777
Circulation (inside and outside of Milner)	314,769	310,346	247,139	211,773	233,036
Items Borrowed for ISU Patrons	6,756	8,145	7,154	6,828	12,757
Items Loaned to Other Libraries	11,893	12,607	10,849	10,120	23,129
Reference Transactions (in person, phone, text, email, IM)	40,367	37,421	26,647	30,263	38,875
Computer Lab Gate Count	144,849	116,630	103,718	95,783	130,120
Number of Library Instruction Sessions	890	895	808	775	792
Learners Receiving Library Instruction	17,561	18,846	16,638	15,845	16,868
Visits to Milner's Web Site	44,923,737	34,074,885	26,379,262	78,245,944	82,048,681
<u>Collections</u>					
Total Volumes in Milner	1,636,701	1,636,789	1,632,215	1,610,271	1,602,003
Volumes Added	37,020	37,942	23,258	13,044	25,677
Volumes Withdrawn	24,178	38,468	27,832	51,014	33,945
Electronic Serial Titles	13,839	14,134	22,659	38,395	54,502
Print Periodical Titles	4,033	3,267	2,855	2,541	2,093
Unique Titles among State of Illinois libraries	203,215	206,757	206,689	202,177	198,309
<u>Library Staffing</u>					
Library Faculty	29.5	26.7	28.1	30.0	33.5
Library Civil Service and Other Professional Staff	66.0	70.2	69.0	61.0	56.0
Library Student Assistants FTE	16.8	17.0	11.0	12.2	12.9
Total Library Staff	112.3	113.9	108.0	103.2	102.4

Source: Milner Library



**ILLINOIS STATE
UNIVERSITY**
Illinois' first public university

REFERENCE





UNDERGRADUATE PROGRAM INVENTORY ~ FALL 2009

CIP	Program	B.A.	B.S.	B.S. Ed.	B.M. Ed.	B.S.W.	B.F.A.	B.M.
01.0000	Agriculture		x					
01.0102	Agribusiness		x					
09.0101	Communication Studies	x	x					
09.0102	Mass Media	x	x					
09.0401	Journalism	x	x					
09.0902	Public Relations	x	x					
11.0103	Information Systems		x					
11.0701	Computer Science		x					
11.0901	Telecommunications Management		x					
13.1001	Special Education		x	x				
13.1202	Elementary Education		x	x				
13.1203	Middle Level Teacher Education		x	x				
13.1209	Early Childhood Education		x	x				
13.1303	Business Teacher Education	x	x	x				
13.1307	Health Education		x	x				
13.1309	Technology Education		x					
13.1312	Bachelor of Music Education				x			
13.1314	Physical Education	x	x	x				
13.1318	Social Sciences Education	x	x					
15.0503	Renewable Energy		x					
15.0612	Industrial Technology		x					
16.0101	Languages, Literatures, and Cultures	x						
16.0501	German	x						
16.0901	French	x						
16.0905	Spanish	x						
19.0101	Family and Consumer Sciences	x	x					
23.0101	English	x						
24.0101	Interdisciplinary Studies	x	x					
24.0102	University Studies	x	x					
26.0101	Biological Sciences		x					
26.0202	Biochemistry and Molecular Biology		x					
27.0101	Mathematics	x	x					
31.0301	Recreation and Park Administration		x					
31.0505	Exercise Science		x					
38.0101	Philosophy	x						

CIP	Program	B.A.	B.S.	B.S. Ed.	B.M. Ed.	B.S.W.	B.F.A.	B.M.	B.S.N.
40.0501	Chemistry		x						
40.0601	Geology		x						
40.0801	Physics		x						
42.0101	Psychology	x	x						
43.0104	Criminal Justice Sciences	x	x						
44.0701	Bachelor of Social Work				x				
45.0101	Social Sciences	x	x						
45.0201	Anthropology	x	x						
45.0601	Economics	x	x						
45.0701	Geography	x	x						
45.1001	Political Science	x	x						
45.1101	Sociology	x	x						
50.0501	Theatre	x	x						
50.0701	Art	x	x						
50.0702	B.F.A. in Art					x			
50.0901	Music (Liberal Arts)	x	x						
50.0903	Music Performance						x		
50.9999	Arts Technology	x	x						
51.0204	Speech Pathology and Audiology		x						
51.0706	Health Information Management		x						
51.0913	Athletic Training		x						
51.1005	Clinical Laboratory Science		x						
51.1601	Nursing							x	
51.2202	Environmental Health		x						
51.2206	Safety		x						
52.0201	Business Administration		x						
52.0301	Accountancy		x						
52.0801	Finance		x						
52.1101	International Business	x	x						
52.1201	Business Information Systems		x						
52.1301	Management		x						
52.1401	Marketing		x						
52.1701	Insurance		x						
54.0101	History	x	x						



Masters Level

CIP	Program	M.A.	M.S.	M.S.Ed.	M.M.Ed.	M.S.W.	M.F.A.	M.S.N.	M.M.	M.B.A.	B.S.M.P.A.
01.0000	Agriculture	x									
09.0101	Communication	x	x								
11.0103	Information Systems	x									
13.0301	Curriculum and Instruction	x	x								
13.0401	Educational Administration	x	x								
13.0501	Instructional Tech. & Design	x									
13.1001	Special Education	x	x								
13.1102	College Student Personnel Admin.	x									
13.1312	Master of Music Education			x							
13.1315	Reading		x								
15.0612	Technology	x									
16.0101	Languages, Literatures, & Cultures	x									
19.0101	Family and Consumer Sciences	x	x								
23.0101	English	x	x								
23.0401	Writing	x	x								
26.0101	Biological Sciences		x								
27.0101	Mathematics		x								
31.0501	Kinesiology and Recreation		x								
40.0501	Chemistry		x								
40.0699	Hydrogeology		x								
42.0101	Psychology	x	x								
42.0601	Clinical-Counseling Psychology	x	x								
43.0104	Criminal Justice Sciences	x	x								
44.0701	Master of Social Work				x						
45.0301	Archaeology	x	x								
45.0601	Applied Economics	x	x								
45.1001	Political Science	x	x								
45.1101	Sociology	x	x								
50.0501	Theatre	x	x								
50.0501	M.F.A. in Theatre					x					
50.0701	Art	x	x								
50.0702	M.F.A. in Art					x					
50.0901	Master of Music							x			

Masters Level

CIP	Program	M.A.	M.S.	M.S.Ed.	M.M.Ed.	M.S.W.	M.F.A.	M.S.N.	M.M.	M.B.A.	B.S.M.P.A.
50.9999	Arts Technology		x								
51.0204	Speech Pathology and Audiology	x	x								
51.1605	Nursing						x				
52.0201	Business Administration								x		
52.0301	Master of Professional Accountancy									x	
52.0301	Accountancy		x								
54.0101	History	x	x								

IBHE Approved Certificate Level

CIP	Program	P.B.	P.M.	S.S.P.	P.M.F.S.P.
13.0301	Alt. Route for Sec. Teacher Certification	x			
23.0401	Teaching of Writing High/Middle School	x			
25.0101	School Librarianship	x			
13.0402	Director of Special Education		x		
13.0409	Education Admin. & General Admin.		x		
13.0411	Education Admin. & Superintendent		x		
13.0499	Educ. Adm. & Chief School Bus. Official		x		
42.1701	School Psychology			x	
51.1605	Family Nurse Practitioner				x
51.1605	Gerontological Nurse Practitioner		x		

Doctoral Level

CIP	Program	Au.D.	Ed.D.	Ph.D.
13.0301	Curriculum and Instruction		x	
13.0401	Educational Administration		x	x
13.1001	Special Education		x	
13.1311	Mathematics Education			x
23.0101	English Studies			x
26.0101	Biological Sciences			x
42.1701	School Psychology			x
51.1608	PhD in Nursing			x
51.0204	Audiology	x		



Illinois Board of Higher Education Comparison Group for Salary Studies

Institution	State
University of Alabama, Birmingham	AL
Northern Arizona University	AZ
University of California, Santa Cruz	CA
University of Northern Colorado	CO
Florida Atlantic University	FL
University of South Florida	FL
Georgia State University	GA
Illinois State University	IL
Ball State University	IN
Indiana State University, Terre Haute	IN
Indiana University, Indianapolis	IN
University of Louisville	KY
University of New Orleans	LA
Western Michigan University	MI
University of Missouri, Kansas City	MO
University of Southern Mississippi	MS
University of North Carolina, Greensboro	NC
Rutgers University, Camden Campus	NJ
SUNY at Albany	NY
Cleveland State University	OH
Ohio University, Athens	OH
University of Toledo	OH
University of South Dakota, Vermillion	SD
University of Memphis	TN
Texas A & M University, Commerce	TX
Texas Woman's University	TX
University of Houston, University Park	TX
University of North Texas	TX
University of Texas, Dallas	TX
University of Wisconsin, Milwaukee	WI

Illinois Board of Higher Education Peer Group

Institution	State
Illinois State University	IL
Ball State University	IN
Wichita State University	KS
Central Michigan	MI
Western Michigan University	MI
University of North Carolina,	NC
University of North Carolina,	NC
Bowling Green State University	OH
Miami University	OH
Portland State University	OR
Old Dominion	VA

Benchmark Group used for most Comparison Studies

Institution	State
University of California, Riverside	CA
University of California, Santa Cruz	CA
Ball State University	IN
University of North Carolina, Greensboro	NC
Bowling Green State University	OH
Miami University	OH
Clemson University	SC
University of Wisconsin, Milwaukee	WI

STUDENT TERMS

Census Day: The University's official date for enrollment. The first day of class following the 10th day of class in each semester.

Certificates: Illinois State University currently offers three types of certificates at the graduate level:

- **Graduate Certificate:** Requires a minimum of nine but no more than 17 semester hours of graduate courses beyond the bachelor's degree. This type of certificate is **not** approved/reviewed by the Illinois Board of Higher Education (IBHE).
- **Post-Baccalaureate Graduate Certificate:** Requires a minimum of 18 semester hours of graduate courses beyond the baccalaureate degree, but less than required for a masters' degree. This type of certificate is approved/reviewed by the IBHE.
- **Post-Master's Graduate Certificate:** Requires a minimum of 24 semester hours of graduate courses beyond the master's degree but less than a doctoral degree. This type of certificate is approved/reviewed by the IBHE.

CIP Codes: Classification of Instructional Programs (CIP) A federal coding system used to provide a taxonomic scheme that will support the accurate tracking, assessment, and reporting of fields of study and program completions activity.

Cohort: The number of new beginning freshmen in a given fall semester. Used in calculating retention of students returning for their second fall semester and in calculating University graduation rates.

Credit Hour: A standard unit of measuring course work; credit hours are assigned to a particular course and count toward graduation.

Degree Program: A program which has specific requirements and number of credits, including a common core for all students seeking a particular degree. Degree programs are approved through a curricular process through the Illinois Board of Higher Education.

Full-Time Enrollment: For undergraduate students – 12 or more credit hours; for graduate students nine or more credit hours per semester.

Full-Time Equivalent (FTE): Total number of credit hours divided by 15 for undergraduate students; and by nine for graduate students.

Grade Point Average (GPA): The total number of grade points divided by the total graded semester hours attempted at Illinois State University.

Graduation Rate: Total number of new beginning freshmen students who complete their degree within 6 years of normal time divided by the number in the original cohort.

Headcount: The count of each student enrolled at the University.

Interdisciplinary: A program or course that spans two or more academic disciplines.

Major or Program: A cohesive combination of courses, including introductory, intermediate, and advanced course work, that designates a student's primary area of specialization.

Minorities: Includes American Indian/Native Alaskan, Black/Non-Hispanic, Asian/Pacific Islander, and Hispanic racial/ethnic designations. Non-Resident Alien is not included as a minority.

Native Students: Students who start as new beginning freshmen at Illinois State University.

New Beginning Freshmen: First-time, first year students who have not attended any college since graduating from high school (includes students who attend a college or university the summer after high school graduation, students with advanced placement credits, and students who took courses for college credit while attending high school).

New Students: Students attending Illinois State University for the first time (Illinois State University baccalaureate recipients entering their first semester working on a second bachelor's degree are considered readmitted students).

Non-Degree Seeking: A student who has not been admitted to a program leading toward a degree; these include unclassified students, students-at-large, and students working toward a non-IBHE approved/reviewed graduate certificate.

Non-Resident: A student whose principal residence is not in Illinois.

STUDENT TERMS (CONTINUED)

Non-Resident Alien: International students who are neither a citizen nor a permanent resident of the United States.

On-and Off-Campus: Students are considered “off-campus” if all of their courses meet at a location other than a University facility; they are considered an “on-campus” student if any or all of their courses meet at a University facility.

Retention Rate: Number of new beginning freshmen who return for their second fall semester divided by the original cohort.

Semester: A semester at Illinois State is the 16-week academic session offered each fall and spring. The summer session is not considered a semester.

Show Rate: Ratio of students who enrolled compared to the number who were accepted.

Transfer Student: Students who previously attended one or more semesters at a community or four-year college after graduating from high school (whether or not any course work was completed).

Unclassified Students: A person who desires to take classes at the University without working toward a specific degree.

Yield Rate: Ratio of the number of students who were accepted compared to the number of students that applied.

EMPLOYEE TERMS

Administrative/Professional: Appointments primarily for the purpose of mission support and include a wide range of responsibilities.

- Administrative (A):** Employees with primary executive, administrative and managerial assignments. These assignments involve planning, organizing, managing and directing the university and its sub units with a reporting line of three levels from the President and a salary level of 55.

- Managerial (M):** These employees are considered to be primary policy decision making administrators who report directly to the President or to one of the Vice Presidents of the University. This group would include the President, Vice Presidents, Deans and Associate Vice Presidents.

- Professional (P):** All Administrative/Professional employees who are not designated as Administrative (A) or Managerial (M).

Civil Service: Civil Service positions are governed by the State Universities Civil Service System. Candidates must demonstrate their ability to perform by passing a test specifically designed for the job. Areas of Civil Service employment include professional, technical, clerical, crafts and service. The civil service system has four classifications of employees:

- Exempt:** Excluded from overtime provisions of the Fair Labor Standards Act; typically managers and administrators.

- Non-Exempt:** Paid by the hour and eligible for overtime under provisions of the Fair Labor Standards Act.

- Negotiated:** Civil Service employees belonging to a union with a negotiated contract.

- Extra Help:** Hired to work without benefits for a limited time (up to 900 hours) and without requirement of a civil service examination.

Emeritus: Retired faculty with rank who continue employment at Illinois State University are accorded the privilege of retaining their professorial title after retirement with the added designation of the word "emeritus" or "emerita."

Faculty: Any Tenure-Track or Non-Tenure Track appointment, ranked or unranked, for the purpose of instruction, organized research, and/or public service in one of the academic (credit hour producing) departments and related areas.

Departmental: Faculty teaching in an academic department.

Non-departmental: Faculty in a non-academic department such as University College instructors.

Lab School Associates: Appointments that do not hold rank in an academic department and are assigned primarily to Thomas Metcalf School or University High School.

Library Faculty: Hold academic rank and are assigned primarily to the Library.

EMPLOYEE TERMS (CONTINUED)

Full-time: A work schedule of 37.5 to 40 hours per week; considered to be 100 percent.

Minorities: Includes American Indian/Native Alaskan, Black Non-Hispanic, Asian/Pacific Islander, and Hispanic racial/ethnic designations. Non-Resident Alien is not included as a minority.

Non-Tenure Track: Appointments for full and part-time appointments are for a specific purpose and for a specified period of time appropriate to that purpose. No time served in any of the non-tenure track titles counts toward fulfillment of a probationary period leading to tenure.

Part-time: A work schedule of less than 100 percent.

Tenure: Tenure is an important means of protecting the rights of members of the faculty to freedom of inquiry, research, discourse, teaching, learning and publications. Tenure entails the faculty member's obligation to strive continuously to improve competence and to cooperate with colleagues in an effort to improve the quality of scholarship and teaching at the institution. The freedom and security provided through academic tenure are fundamental to the success of a university in fulfilling its obligations. After the expiration of a probationary period, faculty have permanent or continuous tenure, and their service should be terminated only for adequate cause, except in the case of retirement for age, or under extraordinary circumstances because of financial exigencies.

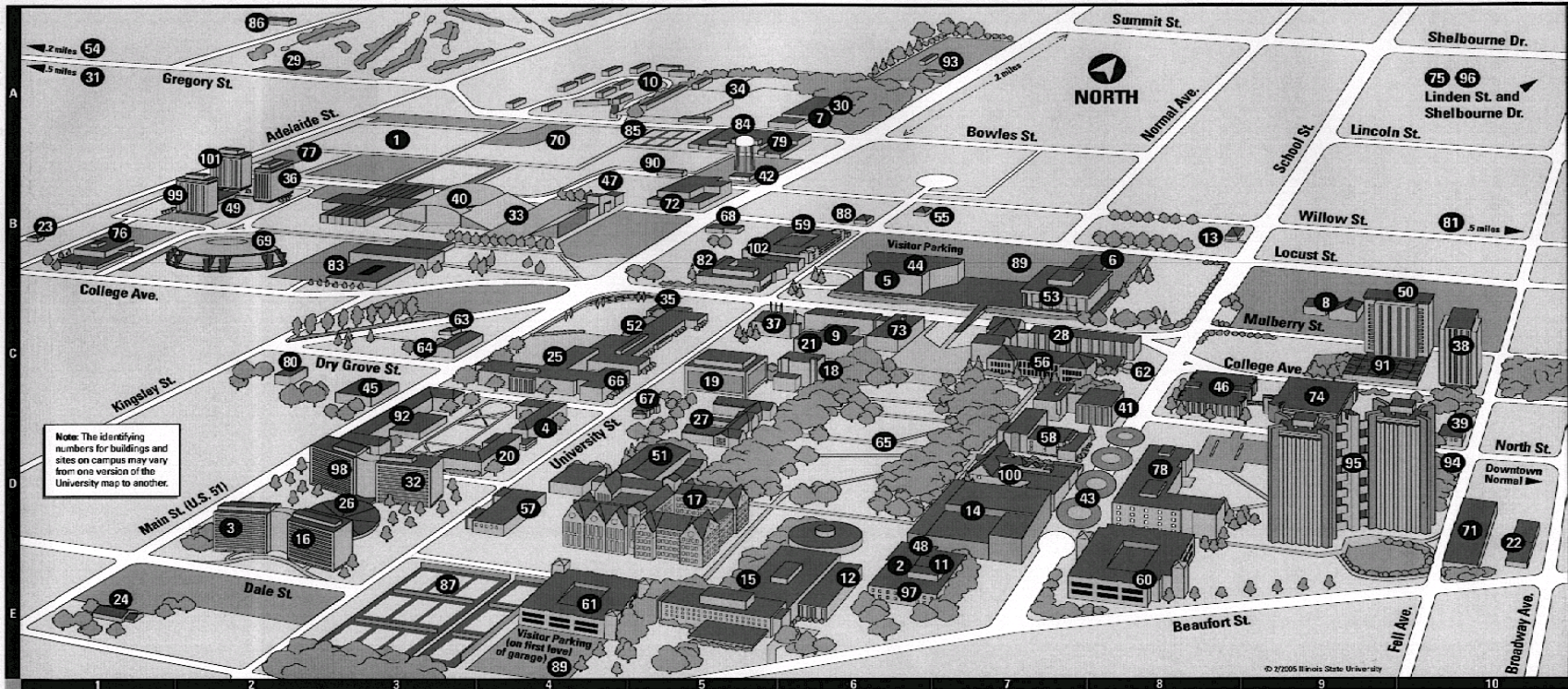
Tenured/Tenure Track: Tenure is granted by the University under the authority granted to the President by the Board of Trustees. Tenure appointments are held only in academic departments or similar academic units.

Rank: The academic ranks that are conferred for tenure at Illinois State University are: Professor, Associate Professor, and Assistant Professor. Promotion within the academic ranks is recommended by the Provost to the President for approval.

OTHER TERMS

IBHE: Illinois Board of Higher Education, the statewide planning and coordinating board for higher education in Illinois, approves/reviews degree programs, provides budget recommendations to the Governor and General Assembly, administers a variety of grant programs, approves operating authority for independent institutions, engages in master planning, and maintains comprehensive high education databases.

IPEDS: The Integrated Postsecondary Education Data System conducted by National Center of Education Statistics (NCES). IPEDS began in 1986 and involves annual data collections. Survey data are required from all postsecondary institutions that have a Program Participation Agreement (PPA) with the Office of Postsecondary Education, U.S. Department of Education. IPEDS also requests limited data from approximately 3,000 other schools offering postsecondary education programs.



- | | | | | |
|---|---|---|---|--|
| 1 Adelaide Soccer Field - A3 | 22 Extended University - E10 | 43 In Exchange - D8 | 64 Professional Development Building - C3 | 85 University High School Tennis Courts - A5 |
| 2 Allen Theatre - E6 | 23 Eyestone School Museum - B1 | 44 InfoCentre - B8 | 65 Quad - D6 | 86 University (President's) Residence - A2 |
| 3 Atkin Hall (ATK) - D2 | 24 Facilities Planning Building - E1 | 45 Instructional Technology and Development Center - C3 | 66 Rachel Cooper (RC) - C4 | 87 University Street Tennis Courts - E3 |
| 4 Barton Hall - D4 | 25 Fairchild Hall (FH) - C4 | 46 Julian Hall (JH) - C8 | 67 Rambo House - C5 | 88 <i>Vicette</i> Building - B6 |
| 5 Bone Student Center/Braden Auditorium - B6 | 26 Feeney Dining Center - D3 | 47 Kaufman Football Building - B4 | 68 Recreation Services Building - B5 | 89 Visitor Parking - B7 and E4 |
| 6 Bowling & Billiards Center (BBC) - B8 | 27 Fell Hall (FEL) - C5 | 48 Kamp Recital Hall - E6 | 69 Redbird Arena (RBA) - B2 | 90 Vitro Center (VIT) - B5 |
| 7 Campus Dining Services - A6 | 28 Felmley Hall of Science (FSA, FHS) - C8 | 49 Linkins Dining Center (LIN) - B2 | 70 Redbird Baseball Field - A4 | 91 Vrooman Dining Center (VRO) - C9 |
| 8 Campus Religious Center - C9 | 29 Golf Course, Illinois State University (GC) - A3 | 50 Manchester Hall - C10 | 71 Research Services Building - D10 | 92 Walker Hall (WAL) - C3 |
| 9 Capen Auditorium - C6 | 30 Green Food Service Building, John - A6 | 51 McCormick Hall (MCH) - D5 | 72 Ropp Agriculture Building (RAB) - B5 | 93 Waller Parking and Transportation Building, Bill - A7 |
| 10 Cardinal Court - A5 | 31 Gregory Street Property - A1 | 52 Metcalf School, Thomas (MLS) - C5 | 73 Schroeder Hall (SCH) - C6 | 94 Watterson Dining Center (WD) - D10 |
| 11 Centennial East (CE) - E7 | 32 Hamilton Hall - D3 | 53 Milner Library (MLB) - C7 | 74 Science Laboratory Building (SLB) - C9 | 95 Watterson Towers - D9 |
| 12 Centennial West (CW) - E6 | 33 Hancock Stadium - B4 | 54 Motorcycle Driving Range - A1 | 75 Shelbourne Apartments - A10 | 96 Wellness House - A10 |
| 13 Center for Intercultural Relations - B8 | 34 Harris Physical Plant, Carter - A5 | 55 Motorcycle Safety Program Office - B7 | 76 Smith Building, Nelson (NSB) - B1 | 97 Westhoff Theatre - E6 |
| 14 Center for the Performing Arts - D7 | 35 Hayden Auditorium - C5 | 56 Moulton Hall (MLT) - C7 | 77 Softball Field - B2 | 98 Whitter Hall - D3 |
| 15 Center for the Visual Arts and University Galleries (CVA) - E5 | 36 Haynie Hall - B2 | 57 Office of Residential Life Building - D4 | 78 Stevenson Hall, Adlai E. (STV) - D8 | 99 Wilkins Hall - B2 |
| 16 Colby Hall (COL) - D2 | 37 Heating Plant - C5 | 58 Old Union Building (OU) - D7 | 79 Stroud Auditorium - A6 | 100 Williams Hall (WIH) - D7 |
| 17 College of Business Building - D5 | 38 Hewett Hall (HEW) - C10 | 59 Parking Garage, North University Street - B6 | 80 Student Accounts Building - C2 | 101 Wright Hall - B2 |
| 18 Cook Hall (CH) - C6 | 39 Honors Program - D10 | 60 Parking Garage, School Street - E3 | 81 Student Recreation Building (Willow and Beech Streets) - B10 | 102 211 North University Street - B5 |
| 19 DeGarmo Hall (DEG) - C5 | 40 Horton Field House (HTN) - B3 | 61 Parking Garage, South University Street - E4 | 82 Student Services Building - B5 | |
| 20 Dunn Hall - D4 | 41 Hovey Hall (Administration) - C8 | 62 Planetarium - C8 | 83 Turner Hall (TUR) - B3 | |
| 21 Edwards Hall (EDW) - C8 | 42 Hudelson Building - B5 | 63 Professional Development Annex - C3 | 84 University High School (UH) - A5 | |