

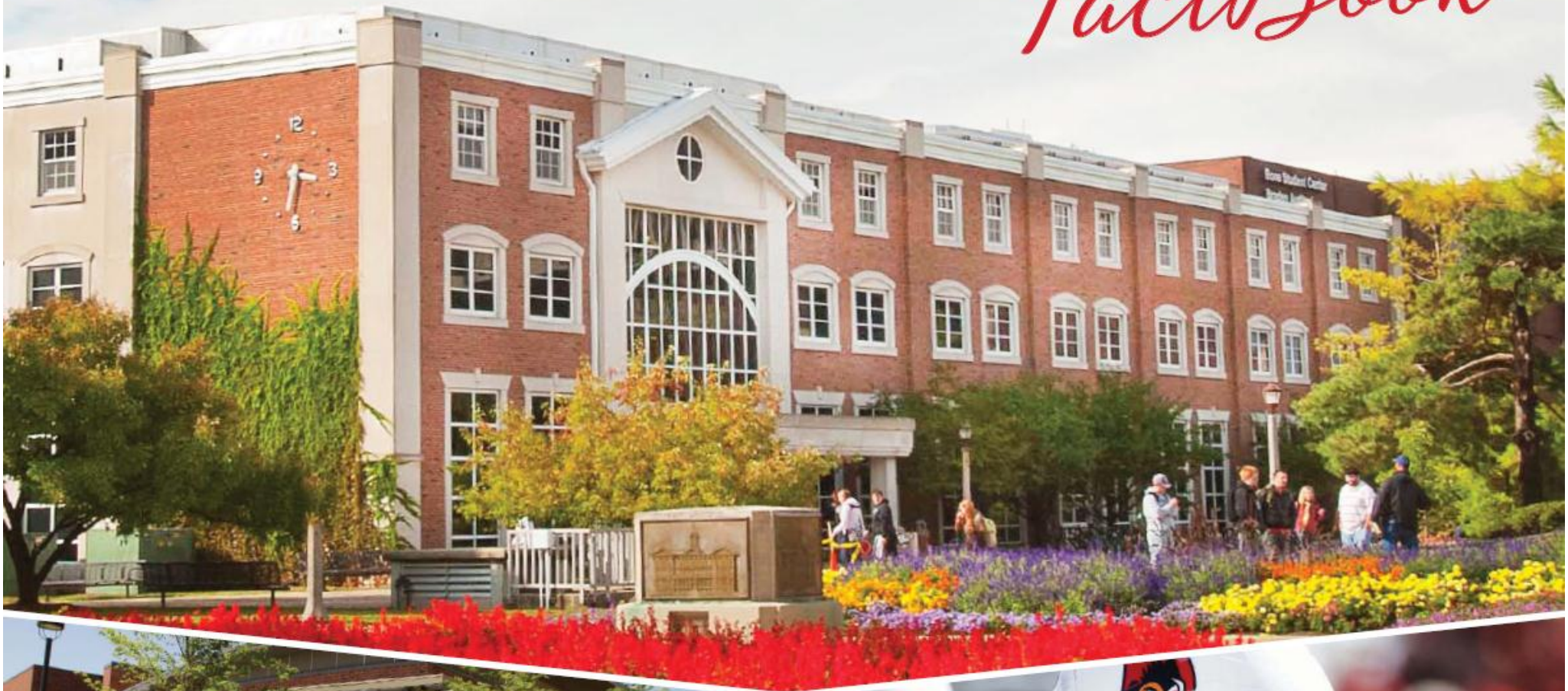


PLANNING,
RESEARCH, AND
POLICY ANALYSIS
Illinois State University

UNIVERSITY

2012

Fact Book





**ILLINOIS STATE
UNIVERSITY**
Illinois' first public university

November 2012

Dear Colleague:

I am pleased to present the twenty-fourth annual *FactBook* prepared by the Planning, Research and Policy Analysis office. The *FactBook* contains a collection of useful information designed to answer frequently asked questions about Illinois State University -- Illinois' first public university.

Much has changed since Illinois State University opened its doors to students in 1857. The University first conferred undergraduate degrees in 1860, began offering master's degree programs in 1943 and introduced doctoral work in 1962. Currently, the University offers sixty-eight undergraduate programs, forty-two master's programs, nine doctoral programs, a Specialist in School Psychology and nine graduate level certificates. In fiscal year 2012, the University conferred 5,402 degrees - 4,452 baccalaureates, 857 master's, 50 doctorates, and 43 certificates. A total of 20,706 students are enrolled this fall (On- and Off-Campus) - 88.2 percent of whom are enrolled in undergraduate programs.

While the University has undergone many changes, our core values have remained steadfast. These values - pursuit of learning and scholarship, individualized attention, public opportunity, diversity, and civic engagement - remain the foundation for everything we do. The goals articulated in the University's strategic plan, *Educating Illinois* emanate from these values, and collectively focus the institution on the actions necessary to be a first-choice public university for high-achieving, motivated students who seek individualized educational experiences combined with the resources of a large university. Data provided in the *FactBook* show that the University is attracting academically prepared students, and that our students are continuing and completing their education at historic rates.

I encourage you to use this publication to familiarize yourself with the basic facts about Illinois State University. Data are presented at the University and College level; information by department and major is available on-line at www.prpa.ilstu.edu. Additional information on *Educating Illinois* is available at www.educatingillinois.ilstu.edu. If you have questions about the University or *Educating Illinois*, please contact the Planning, Research and Policy Analysis office by telephone at (309) 438-8393 or by e-mail at prpa@ilstu.edu.

Sincerely,

A handwritten signature in black ink, appearing to read "Al Bowman".

Al Bowman
President



TABLE OF CONTENTS

QUICK GLANCE

Board of Trustees & University Administrators	1
Deans, Department Chairs, and School Directors ~ Fall 2012	2
University Facts ~ Fall 2012	3
Undergraduate Students ~ Fall 2012	4
Graduate Students ~ Fall 2012	5
College Enrollment by Racial/Ethnic Designation ~ Fall 2012	6
Departmental Faculty Characteristics ~ Fall 2012	7
Strategic Plan <i>Educating Illinois 2008-2014</i>	8

ORGANIZATIONAL CHARTS

President ~ Al Bowman	9
Vice President Academic Affairs & Provost ~ Sheri Noren Everts	10
Vice President for Finance & Planning ~ Dan Layzell	11
Vice President for Student Affairs ~ Larry Dietz	12
Vice President for University Advancement ~ Erin Minné	13

STUDENTS

New

Applications, Acceptances, & Enrollments ~ Fall 2012	15
New Beginning Freshmen ~ Fall 2012	16
American College Testing (ACT) ~ Fall 2006 through Fall 2012	17
New Beginning Freshmen ~ Fall 2006 through Fall 2012	18
New Undergraduate Transfers ~ Fall 2006 through Fall 2012	19

Enrollment

Gender, Level, & Hours ~ Fall 2006 through Fall 2012	20
College, Racial/Ethnic Designation & Level ~ Fall 2012	21
College & Level ~ Fall 2006 and Fall 2012	22
Racial/Ethnic Designation & Level ~ Fall 2006 and Fall 2012	23
Class and Age ~ Fall 2012	24
College and Gender ~ Fall 2006 and Fall 2012	25
Non-Resident Alien Students ~ Fall 2006 and Fall 2012	26
On-and Off-Campus & Class ~ Fall 2006 and Fall 2012	27
Level ~ Fall 2002 through Fall 2012	28
Class, Gender & Racial/Ethnic Designation ~ Fall 2016	29
Class & Credit Hours ~ Fall 2002 through Fall 2012	30
Illinois Residents by County ~ Fall 2012	31
State of Residence ~ Fall 2012	32
Non-Resident Alien Students ~ Fall 2012	33



TABLE OF CONTENTS (Continued)

STUDENTS (continued)

Degrees

College ~ Fiscal Year 2006 through Fiscal Year 2012	34
Undergraduate, Gender & Racial/Ethnic Designation ~ Fiscal Year 2006 through Fiscal Year 2012	35
Graduate, Level & Racial/Ethnic Designation ~ Fiscal Year 2006 through Fiscal Year 2012	36

Other

Class Size ~ Fall 2009 through Fall 2012	37
Time-To-Degree ~ Fall 2001 through Fall 2008	38
Retention and Graduation Rates	39

FACULTY/STAFF

Employee Category Full-Time Equivalency ~ Fall 2011 and Fall 2012	41
Category, Gender and Racial/Ethnic Designation ~ Fall 2012	42
Rank and Racial/Ethnic Designation ~ Fall 2012	43
Full-Time Equivalent (FTE) by College, Gender & Tenure Status ~ Fall 2011 and Fall 2012	44
College & Percent Appointment ~ Fall 2006 through Fall 2012	45
Tenured/Tenure Track Departmental Faculty, Age by Rank ~ Fall 2012	46
Average Annual Salary by Rank ~ Fall 2006 through Fall 2011	47

RESOURCES

Total Expenditures & Mandatory Transfers ~ Fiscal Years 2008 through 2012	49
Historical Appropriations and University Income Fund ~ Fiscal Years 2009 through 2013	50
Current Funds Revenues by Source ~ Fiscal Years 2011 and 2012	51
Sponsored Research, Instruction, Creative Works & Service ~ Fiscal Year 2009 through Fiscal Year 2012	52
Student Financial Aid & Institutional Support ~ Fiscal Year 2012	53
Undergraduate Student Tuition and Fee Rates ~ Academic Year 2010 through Academic Year 2012	54
Graduate Student Tuition and Fee Rates ~ Academic Year 2004 through Academic Year 2012.....	55
Milner Library	56

REFERENCE

Undergraduate Program Inventory ~ Fall 2012	57
Graduate Program Inventory ~ Fall 2012	58
Peer Institutions	59

UNIVERSITY DEFINITIONS

Student Terms	60
Employee Terms	61
Other Terms	62

CAMPUS MAP



**ILLINOIS STATE
UNIVERSITY**
Illinois' first public university



ILLINOIS STATE
UNIVERSITY
Illinois' first public university

UNIVERSITY
2012
FactBook

Quick Glance



QUICK GLANCE
BOARD OF TRUSTEES & UNIVERSITY ADMINISTRATORS

Board of Trustees

	<u>Term Expires</u>
Michael McCuskey - chair	January 2017
Jay D. Bergman	January 2017
Anne Davis	January 2017
Bob Dobski	January 2013
Betty Kinser	January 2017
Joanne E. Maitland	January 2013
Rocky Donahue	October 2017
Aaron Von Qualen	Student Trustee

Current Administrators

Al Bowman	President
Sheri Noren Everts	Vice President for Academic Affairs and Provost
Dan Layzell	Vice President for Finance and Planning
Larry Dietz	Vice President for Student Affairs
Erin Minné	Vice President for University Advancement

Past and Current Presidents

Charles E. Hovey	1857-1862	Samuel J. Braden	1967-1970
Richard Edwards	1862-1876	David K. Berlo	1971-1973
Edwin C. Hewett	1876-1890	Gene A. Budig	1973-1977
John W. Cook	1890-1899	Lloyd Watkins	1977-1988
Arnold Thompkins	1899-1900	Thomas Wallace	1988-1995
David Felmley	1900-1930	David A. Strand	1995-1999
Harry A. Brown	1930-1933	Victor John Boschini Jr.	1999-2003
Raymond W. Fairchild	1933-1955	Al Bowman	2003-Present
Robert G. Bone	1956-1967		



College of Applied Science and Technology

- Department of Agriculture.....
- Department of Criminal Justice Sciences.....
- Department of Family and Consumer Sciences.....
- Department of Health Sciences.....
- School of Information Technology.....
- School of Kinesiology and Recreation.....
- Department of Military Science.....
- Department of Technology.....

Dean Dr. Jeffery A. Wood

- Chair Dr. Robert Rhykerd
- Chair Dr. Jacqueline L. Schneider
- Chair Dr. Robert Cullen
- Chair Dr. Jeffery K. Clark
- Director Dr. Joaquin A. Vila-Ruiz
- Director Dr. Alan C. Lacy
- Lt. Col. Stacy Seaworth
- Chair Dr. Richard A. Boser

College of Arts and Sciences

- School of Biological Sciences.....
- Department of Chemistry.....
- School of Communication.....
- Department of Communication Sciences & Disorders.....
- Department of Economics.....
- Department of English.....
- Department of Geography-Geology.....
- Department of History.....
- Department of Languages, Literatures and Cultures.....
- Department of Mathematics.....
- Department of Philosophy.....
- Department of Physics.....
- Department of Politics and Government.....
- Department of Psychology.....
- School of Social Work.....
- Department of Sociology and Anthropology.....

Dean Dr. Gregory B. Simpson

- Director Dr. Craig Gatto
- Chair Dr. John E. Baur
- Director Dr. Larry W. Long
- Chair Dr. Ann E. Beck
- Chair Dr. David L. Cleeton
- Chair Dr. James M. Skibo
- Chair Dr. David H. Malone
- Chair Dr. Anthony Crumbaugh
- Chair Dr. Bruce R. Burningham
- Chair Dr. George F. Seelinger
- Chair Dr. Thomas G. Buller
- Chair Dr. Richard F. Martin, Jr.
- Chair Dr. Ali Riaz
- Chair Dr. Jerome S. Jordan
- Director Dr. Diane L. Zosky
- Chair Dr. Fred H. Smith

College of Business

- Department of Accounting.....
- Department of Finance, Insurance and Law.....
- Department of Management & Quantitative Methods.....
- Department of Marketing.....

Dean Dr. Scott D. Johnson

- Acting Chair Dr. Gerald McKean
- Chair Dr. Gary Koppenhaver
- Chair Dr. John H. Bantham
- Chair Dr. Timothy A. Longfellow

College of Education

- Department of Curriculum and Instruction.....
- Department of Educational Administration & Foundations.....
- Department of Special Education.....

Dean Dr. Perry L. Schoon

- Chair Dr. Barbara B. Meyer
- Chair Dr. Wendy G. Troxel
- Chair Dr. Maureen E. Angell

College of Fine Arts

- School of Art.....
- School of Music.....
- School of Theatre and Dance.....

Dean Dr. James E. Major

- Director Mr. J. Anthony Crowley
- Director Dr. Stephen B. Parsons
- Director Ms. Janet M. Wilson

Mennonite College of Nursing

University Libraries

Dean Dr. Janet W. Krejci

Dean Mr. Dane M. Ward



On-Campus Headcount Enrollment

Undergraduate	18,207
Graduate	2,295
Total	20,502

Enrollment by Gender

Male	9,096
Female	11,406

Enrollment by Racial/Ethnic Designation

Am. Indian/Alaskan Native	39
Black or African American	1,260
Asian	384
Hispanic	1,303
Hawaiian or Pacific Islander	17
White	16,519
Two or More Selections	381
No Response	217
Non-Resident Alien	382

New Students Fall 2012

4-Year College Transfers	320
Community College Transfers	1,556
Beginning Freshmen Cohort	3,088
Average ACT score	23.7

Degrees Conferred in Fiscal Year 2012

Baccalaureate	4,452
Masters	857
IBHE Approved Certificates	43
Doctoral	50
Total	5,402

Graduate Certificates Awarded 51

Persistence and Graduation Rates

Freshmen returning for second fall.	82.3%
6-Year Graduation rate (before 7th fall).	71.0%

Living Alumni

Illinois	121,974
Other U.S. States	46,077
Foreign Countries	967
Locations Unknown	20,611
Total	189,629

Student Financial Aid

Eighty-two percent (16,855) of all students received financial support in Fiscal Year 2012.

Student Housing

Thirty percent of students live in the residence halls; another 1.0 percent live in University-owned housing.

University Employees

Departmental Faculty	1,212
Non-Departmental Faculty	41
Library Faculty	29
Lab School Faculty	112
Managerial/Administrative	66
Professional	694
Civil Service	1,409
Total	3,563

Milner Library Holdings

Volumes	1,622,355
Printed and electronic periodicals	83,375

Research and Sponsored Programs

Proposals Awarded	239
Funds Awarded in FY 12	\$25.6 million

Grounds, Buildings, and Facilities

Close to 1,000 acres; over 140 buildings. The estimated replacement value of the facilities is \$1.1 billion.

Fall 2012 Tuition & Fees Per Credit Hour -

New Students (State Resident)

Undergraduate	\$410.60
Graduate	\$383.60

Fiscal Year 2012 Operating Expenditures

\$402.1 million

University Accreditation Agencies

Higher Learning Commission of the North Central Association of Colleges and Schools; and National Council for Accreditation of Teacher Education.

Student to Faculty Ratio 19:1

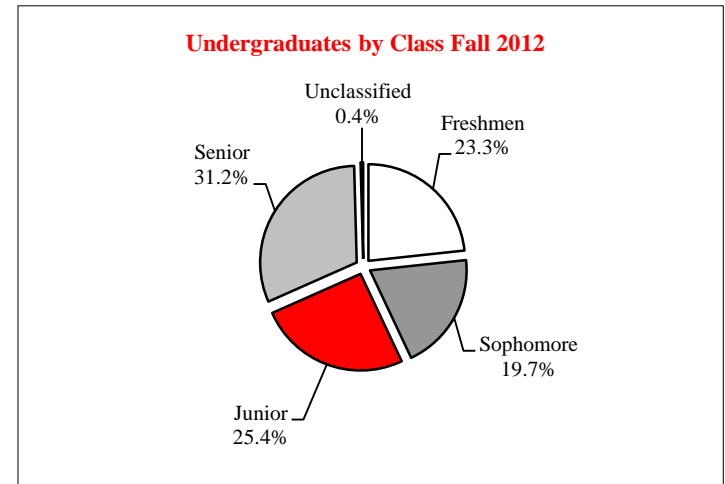


QUICK GLANCE

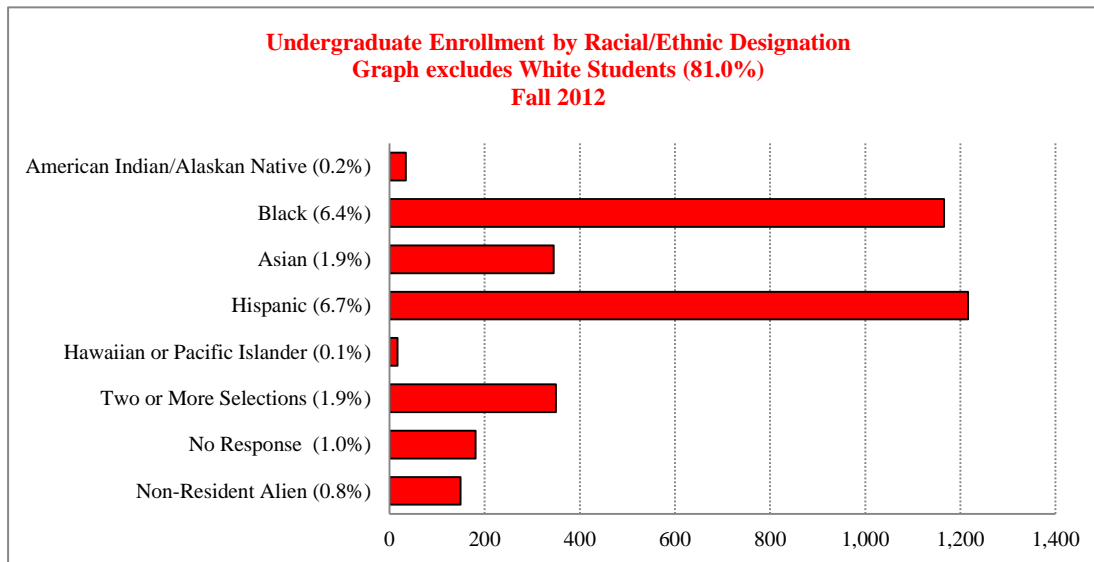
UNDERGRADUATE STUDENTS ~ FALL 2012

<u>Class</u>	<u>Average Age</u>	<u>Headcount</u>	<u>FTE</u> ¹
Freshmen	18.4	4,241	4,065
Sophomore	19.7	3,588	3,431
Junior	21.1	4,618	4,286
Senior	22.9	5,682	4,931
Unclassified	21.9	78	55
Total	20.8	18,207	16,768

¹ Undergraduate Full-time Equivalency (FTE) credit hours divided by 15.



Undergraduate Enrollment by Racial/Ethnic Designation
 Graph excludes White Students (81.0%)
 Fall 2012



<u>Racial/Ethnic Designation</u>	<u>Headcount</u>
American Indian/Alaskan Native	34
Black or African American	1,166
Asian	345
Hispanic	1,216
Hawaiian or Pacific Islander	17
White	14,749
Two or more Selections	350
No Response	181
Non-Resident Alien	149
Total	18,207



QUICK GLANCE

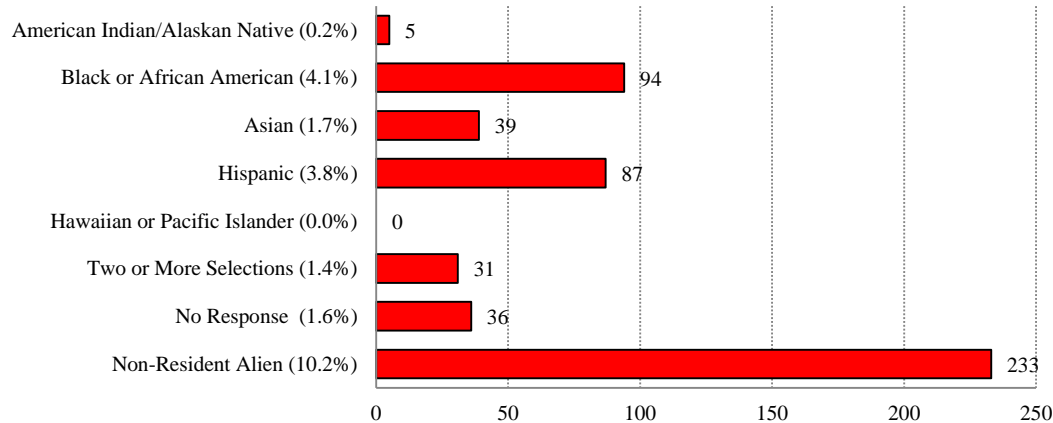
GRADUATE STUDENTS ~ FALL 2012

<u>Class</u>	<u>Average Age</u>	<u>Headcount</u>	<u>FTE</u> ¹
Masters	29.0	1,884	1,523
Certificate	31.2	37	28
Doctoral	35.9	374	264
Total	30.1	2,295	1,815



¹ Graduate Full-time Equivalency (FTE) credit hours divided by 9.

Graduate Enrollment by Racial/Ethnic Designation
 Graph excludes White Students (77.1%)
 Fall 2012



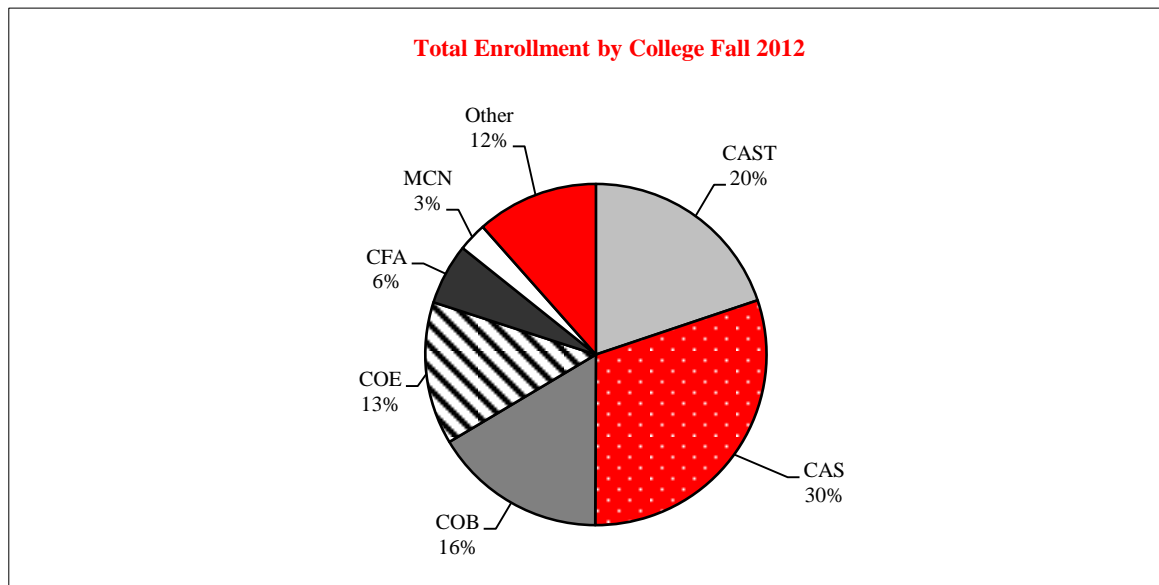
<u>Racial/Ethnic Designation</u>	<u>Headcount</u>
American Indian/Alaskan Native	5
Black or African American	94
Asian	39
Hispanic	87
Hawaiian or Pacific Islander	--
White	1,770
Two or more Selections	31
No Response	36
Non-Resident Alien	233
Total	2,295



COLLEGE ENROLLMENT BY RACIAL/ETHNIC DESIGNATION ~ Fall 2012

	American Indian/ Alaskan Native	Black or African American	Asian	Hispanic	Hawaiian or Pacific Islander	White	Two or More Selections	No Response	Non Resident Alien	Total
<u>All Students</u>										
Applied Science and Technology	5	255	79	207	4	3,320	79	38	82	4,069
Arts and Sciences	11	437	115	450	5	4,857	111	77	132	6,195
Business	7	181	67	198	1	2,745	65	33	61	3,358
Education	4	76	47	148	2	2,439	33	18	4	2,771
Fine Arts	6	48	19	75	1	951	31	30	23	1,184
Mennonite College of Nursing	2	21	8	26	2	487	5	7	1	559
Other ¹	4	242	49	199	2	1,720	57	14	79	2,366
Total	39	1,260	384	1,303	17	16,519	381	217	382	20,502

¹ Other includes: Unclassified, Interdisciplinary Studies, Student-at-Large, Undeclared, and University Studies.





QUICK GLANCE

DEPARTMENTAL FACULTY CHARACTERISTICS ~ FALL 2012

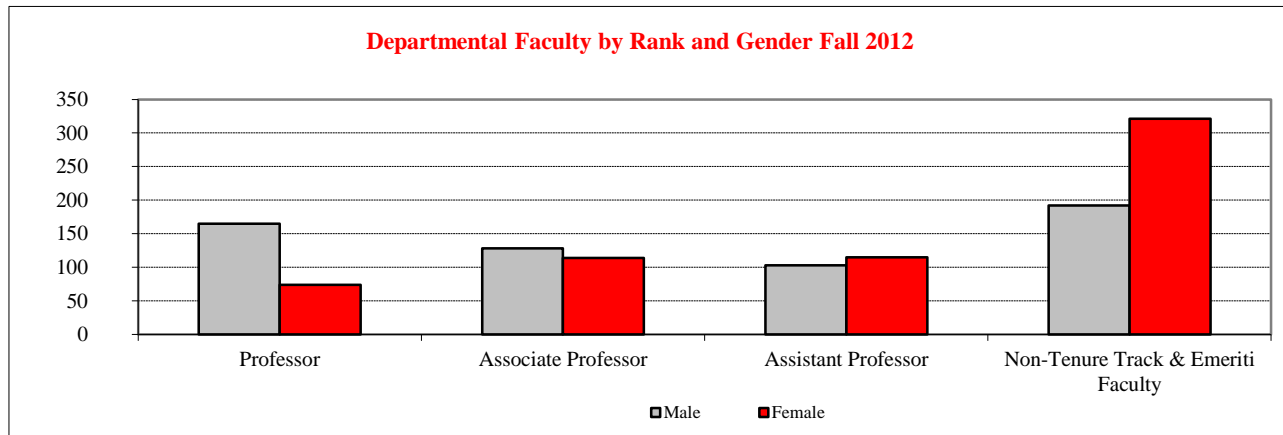
<u>Rank</u>	<u>Gender</u>		
	<u>Male</u>	<u>Female</u>	<u>Total</u>
Professor	165	74	239
Associate Professor	128	114	242
Assistant Professor	103	115	218
Other ¹	192	321	513
Total	588	624	1,212

<u>Rank</u>	<u>Percent Appointment</u>		
	<u>Full-Time</u>	<u>Part-Time</u>	<u>Total</u>
Professor	239	--	239
Associate Professor	242	--	242
Assistant Professor	218	--	218
Other ¹	161	352	513
Total	860	352	1,212

<u>Racial/Ethnic Designation</u>	<u>Number</u>	<u>Percent</u>
American Indian/Alaskan Native	1	0.1
Black or African American	38	3.1
Asian	69	5.7
Hispanic	32	2.6
Hawaiian or Pacific Islander	1	0.1
White	983	81.1
Two or more Selections	8	0.7
No Response	55	4.5
Non-Resident Alien	25	2.1
Total	1,212	100.0

<u>Years of Service</u>	<u>Tenure Status</u>		
	<u>Track</u>	<u>Non-Tenure</u>	<u>Total</u>
0-3 Years	159	324	483
4-6 Years	100	79	179
7-9 Years	75	34	109
10-14 Years	171	51	222
15-19 Years	66	14	80
20 or More Years	128	11	139
Total	699	513	1,212

¹ Non-Tenure Track & Emeriti Faculty





EDUCATING ILLINOIS: Priorities for Illinois' first public university 2008-2014

Illinois State University - Illinois' first public university - is an institution of first choice for increasing numbers of academically talented and motivated students. The university maintains strong, mutually reinforcing commitments to scholarship, and to undergraduate and graduate education.

The University's strategic plan, *Educating Illinois 2008-2014: Priorities for Illinois' First Public University*, builds upon the University's heritage, strengths, and recent accomplishments. The plan advances the Board of Trustees' vision statement for the University, and it reflects extensive consultation with individuals from throughout the Illinois State University community.

Our Mission: We at Illinois State University work as a diverse community of scholars with a commitment to fostering a small-college atmosphere with large-university opportunities. We promote the highest academic standards in our teaching, scholarship, public service and the connections we build among them. We devote all of our resources and energies to creating the most supportive and productive community possible to serve the citizens of Illinois and beyond.

Our Vision: Illinois State University will continue to occupy a unique position of strength and visibility among the institutions of higher education in Illinois, the nation, and the world. Illinois State University will continue to be the first-choice public university in Illinois for high-achieving, motivated students who seek an individualized educational experience at an institution that offers excellent undergraduate and graduate programs and supports high-quality research, scholarship, and creative activities.

Our Values:

Pursuit of Learning and Scholarship: Illinois State University works with students as partners in their educational development inside and outside of the classroom, so that students come to appreciate learning as an active and lifelong process. The University contributes new knowledge through research, scholarship, and creative activities, as well as other forms of individual scholarship in which all students, faculty, and staff are encouraged to participate.

Individualized Attention: Illinois State University provides a supportive environment. An innovative General Education program, strong student-faculty-staff connections, and superior student services focus on each student as an individual, with unique educational needs and potential. The University is dedicated to placing the learner at the center of teaching and scholarship, to recognizing the importance of each faculty and staff member to the successful operation of the programs and services provided, and to acknowledging the on-going contributions of its former students, faculty, and staff.

Public Opportunity: Illinois State University assures students access to educational, research, and service opportunities through a wide range of high quality programs; faculty mentors who are scholars and creative artists of repute in their disciplines; and the support of outstanding facilities, technologies, and library resources. The University partners with business, industry, government, and education providing leadership in statewide, national, and international initiatives; expanding service and outreach; and enhancing financial support for instructional, scholarship, and service activities.

Diversity: Illinois State University affirms and encourages community and an informed respect for differences among students, faculty, and staff by fostering an inclusive environment characterized by ethical behavior and social justice that prepares students to be fully engaged participants in a global society. The University supports a diverse faculty and staff who mentor a diverse student population. The University endeavors to create a varied and inclusive community where all students, staff, and faculty are active participants in a global society characterized by teamwork, respect for differences, civic engagement, and educational goals which celebrate diversity.

Civic Engagement: Illinois State University prepares students to be informed and engaged citizens who will promote and further the collective goals of society. The University promotes active learning experiences through which students will gain an awareness and understanding of civic engagement as a lifelong responsibility. Furthermore, the University encourages faculty and staff to serve as engaged civic leaders and role models promoting the quality of life for all citizens through collaborative and individual action.



ILLINOIS STATE
UNIVERSITY
Illinois' first public university

UNIVERSITY
2012
FactBook

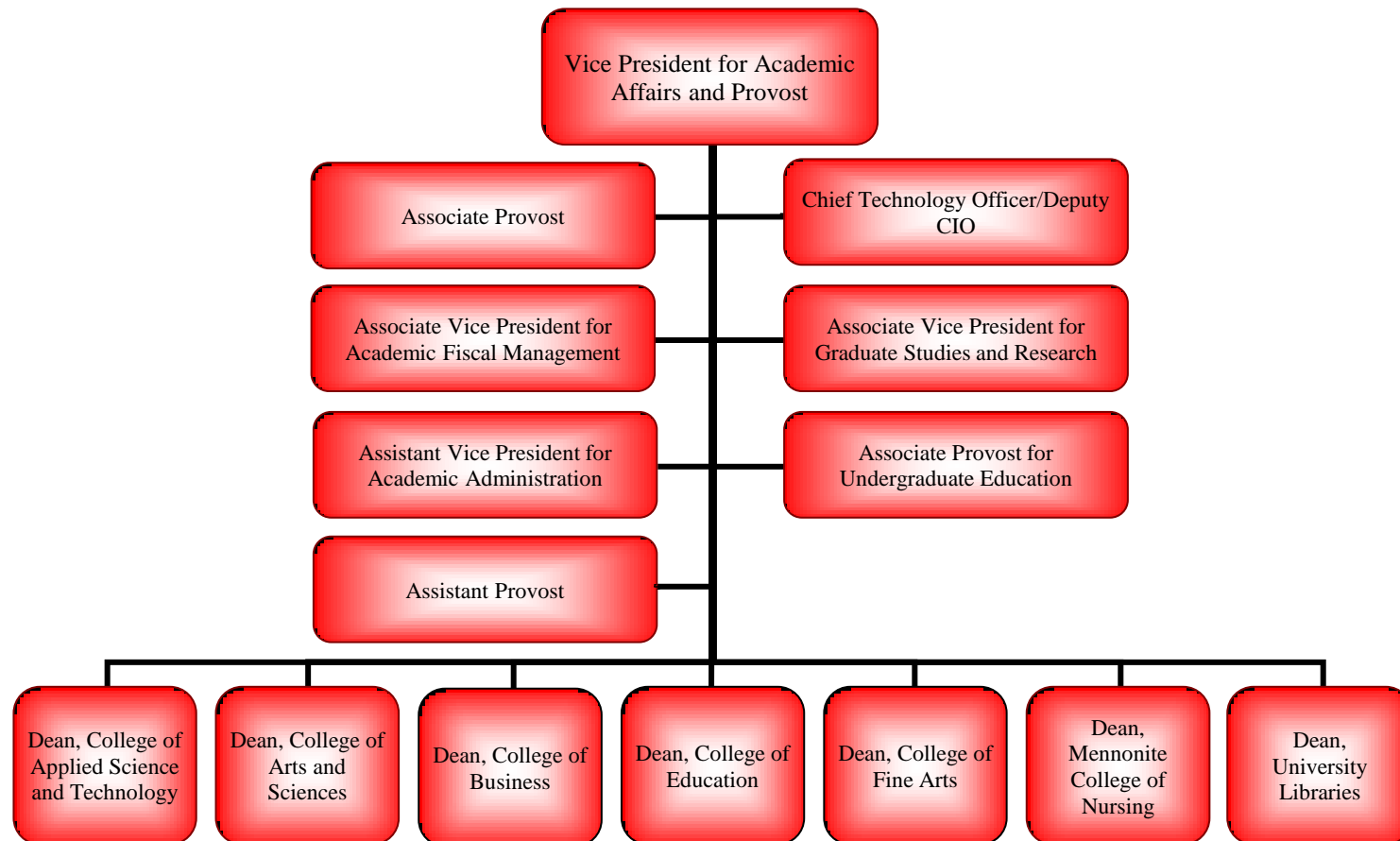
Organizational Charts



Al Bowman is President of Illinois State University. Dr. Bowman joined Illinois State University in 1978 as a faculty member in Speech Pathology and Audiology. He was appointed Chairperson of Speech Pathology and Audiology in 1994 and served as Interim Provost during the 2002-2003 academic year. Bowman received a bachelor's degree in Speech Pathology from Augustana College in Rock Island, Illinois. He earned a master's degree from Eastern Illinois University and a Ph.D. in Speech and Hearing Science from the University of Illinois-Urbana/Champaign. Dr. Bowman is a member of the Chicago Education Alliance, the American Speech-Language-Hearing Association, and the American Council on Education's Commission on Women in Higher Education. He serves on the board of directors for Chestnut Health Systems, BroMenn Healthcare, and the McLean County Museum of History. He is also a member of the NCAA's Division I-AA/I-AAA Presidential Advisory Group.

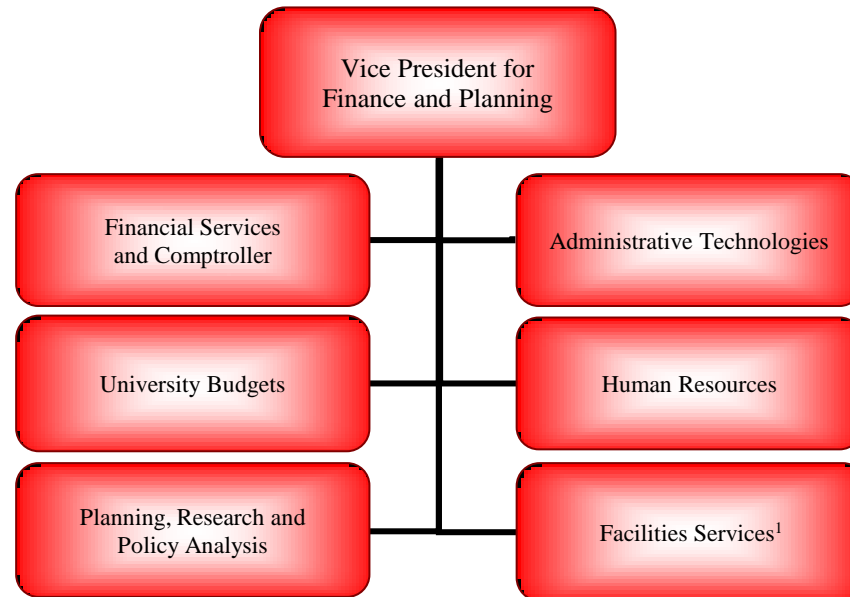


Sheri Noren Everts is the Vice President for Academic Affairs and Provost at Illinois State University. Previously she served as Interim Senior Vice Chancellor for Academic and Student Affairs, acting Vice Chancellor, and Associate Vice Chancellor at the University of Nebraska at Omaha (UNO). Everts has co-authored two books, has published numerous articles, and made over 200 professional presentations on assessment and portfolios. She received her bachelor's degree in English and Secondary Education, master's degree in Literacy Education and English, and Ph.D. in Administration, Curriculum and Instruction from the University of Nebraska-Lincoln.



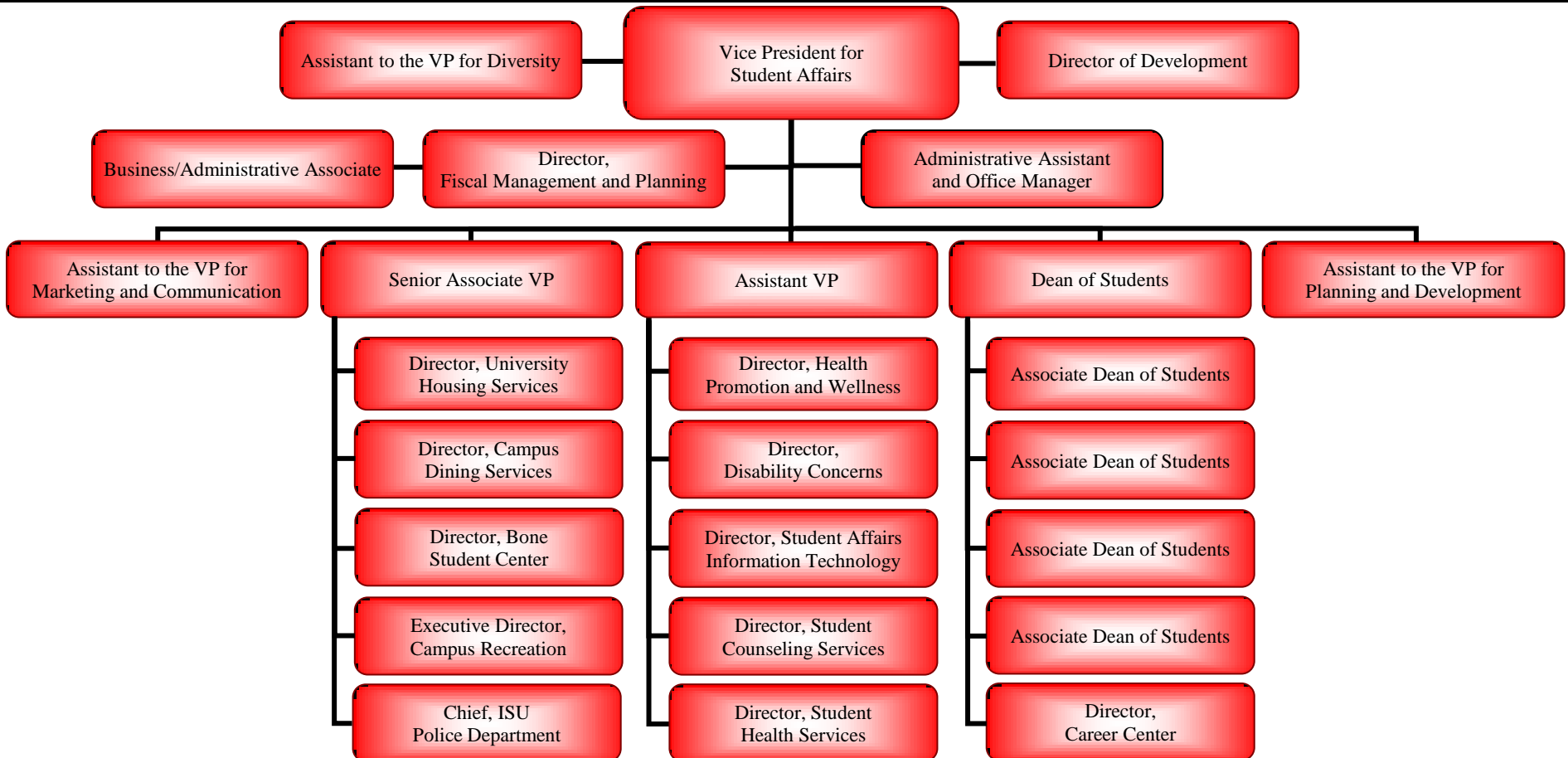
Department Chairpersons and School Directors report to the College Deans - see page 2.

Dan Layzell became Vice President for Finance and Planning at Illinois State University in September 2009. Immediately prior to joining the University, he served as Associate Vice President for Planning and Administration at the University of Illinois, he was formerly a Deputy Director of Planning and Budgeting for the Illinois Board of Higher Education. He also previously was a partner in the higher education practice of MGT of America, Inc., a consulting firm based in Tallahassee, Florida, director of policy analysis and research for the University of Wisconsin System, and a budget analyst for the Arizona Legislature. He has been an adjunct faculty member in the graduate higher education programs at the University of Illinois at Urbana-Champaign, Florida State University, and University of Wisconsin-Madison. Dr. Layzell has a Ph.D. in Higher Education from Florida State University, an A.M. in Labor and Industrial Relations from the University of Illinois at Urbana-Champaign, and a B.A. in Economics and Business Administration from Illinois College. He is the author or co-author of various articles, book chapters, monographs, and conference papers dealing with topics related to higher education finance, strategic planning, and public policy.

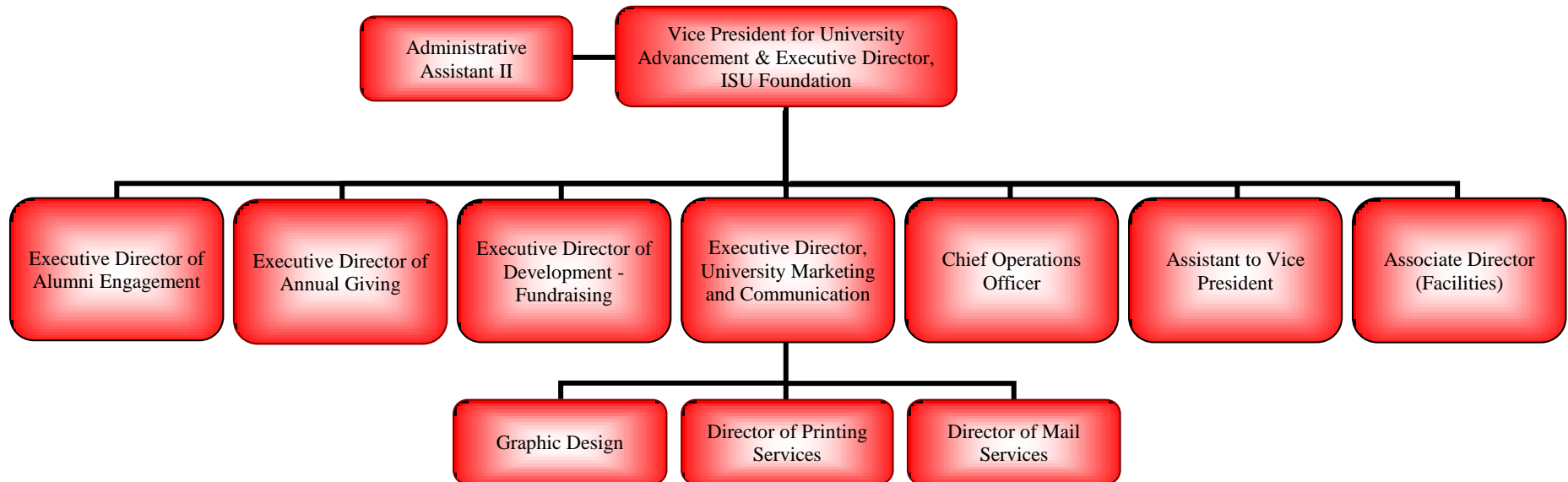


¹ Includes Facilities Planning and Construction Management, Facilities Management, Energy Management, and Environmental Health and Safety..

Larry Dietz became Vice President for Student Affairs and Associate Professor of Education Administration and Foundations on June 1, 2011. Dr. Dietz began his student affairs career at Southern Illinois University Carbondale (SIUC) in financial aid administration. He moved to Iowa State University and served in various roles in the offices of Student Financial Aid and the Vice President for Student Affairs. He was elected President of the Iowa Student Financial Aid Association, Commission Director of Governmental Affairs and a member of the Board of Directors of the National Association of Student Financial Aid Administration. Dr. Dietz has served as Assistant, Associate, and Vice Chancellor for Student Affairs and Enrollment Management at the University of Missouri – Kansas City and Vice Chancellor for Student Affairs at SIUC. He earned his bachelor’s degree at SIUC and his masters and doctorate degrees at Iowa State University. He has been honored by Iowa State’s College of Education as an “Outstanding Alumni”, by the Chamber of Commerce of Kansas City and the SIUC Board of Trustees for his community service, and by the National Association of Student Personnel Administrators (NASPA) and the American College Personnel Association for his outstanding contribution to the profession. He was also awarded a Fulbright Award to study in Germany, has completed management programs at Harvard University and was chosen to assist in developing the Iraqi Education Initiative. He currently serves on the Foundation Board of Directors of NASPA.



Erin Minné joined Illinois State in June 2010, coming to us from the University of Iowa where she served as the Vice President for Development of the University of Iowa Foundation. At Iowa, she managed a \$500 million campaign for the academic medical center and provided oversight for campaigns for the colleges of Public Health and Dentistry. Erin received her bachelor's degree from Oakland University in Michigan and her master's degree from Saint Mary's University of Minnesota. She has also held positions at Michigan Technological University, Boysville of Michigan, American Cancer Society, and Orchards Children's Services.





**ILLINOIS STATE
UNIVERSITY**
Illinois' first public university



ILLINOIS STATE
UNIVERSITY
Illinois' first public university

UNIVERSITY
2012
FactBook

Students



STUDENTS ~ NEW
APPLICATIONS, ACCEPTANCES, & ENROLLMENTS - FALL 2012

New Beginning Freshmen

	<u>Applications</u>	<u>Acceptances</u>	<u>Enrollments</u>	<u>Yield Rate</u>	<u>Show Rate</u>
American Indian/Alaskan Native	17	10	3	59%	30%
Black or African American	2,077	862	232	42	27
Asian	360	286	75	79	26
Hispanic	1,467	985	279	67	28
Hawaiian or Pacific Islander	2	1	--	50	0
White	8,032	6,742	2,409	84	36
Two or more Selections	330	236	78	72	33
No Response	32	24	4	75	17
Non-Resident Alien	91	32	8	35	25
Total	12,408	9,178	3,088	74	34

New Undergraduate Transfer Students¹

	<u>Applications</u>	<u>Acceptances</u>	<u>Enrollments</u>	<u>Yield Rate</u>	<u>Show Rate</u>
American Indian/Alaskan Native	10	4	4	40%	100%
Black or African American	504	205	116	41	57
Asian	116	68	28	59	41
Hispanic	342	238	122	70	51
Hawaiian or Pacific Islander	3	3	1	100	33
White	3,578	2,668	1,553	75	58
Two or more Selections	104	67	38	64	57
No Response	14	10	7	71	70
Non-Resident Alien	60	22	7	37	32
Total	4,731	3,285	1,876	69	57

New Graduate Students

	<u>Applications</u>	<u>Acceptances</u>	<u>Enrollments</u>	<u>Yield Rate</u>	<u>Show Rate</u>
American Indian/Alaskan Native	3	2	1	67%	50%
Black or African American	123	49	23	40	47
Asian	68	29	16	43	55
Hispanic	82	34	18	41	53
Hawaiian or Pacific Islander	2	1	--	50	0
White	1,451	785	464	54	59
Two or more Selections	29	16	8	55	50
No Response	11	8	6	73	75
Non-Resident Alien	402	199	90	50	45
Total	2,171	1,123	626	52	56

¹ Excludes Unclassified



STUDENTS ~ NEW
NEW BEGINNING FRESHMEN ~ FALL 2012

<u>ACT Composite</u>	<u>Number</u>	<u>Percent</u>	<u>Cumulative</u>
30-36	121	3.9	3.9
26-29	615	19.9	23.8
23-25	1,250	40.5	64.3
20-22	914	29.6	93.9
18-19	149	4.8	98.7
16-17	19	0.6	99.4
1-15	--	--	99.4
Not Reported	20	0.6	100.0

<u>Top Illinois Counties</u>	<u>Number</u>
Cook	1,039
Dupage	413
Will	312
Lake	236
McLean	128
Kane	115
McHenry	112
Tazewell	49
Champaign	45
Winnebago	44

Average ACT Composite Scores

<u>Fall Term</u>	<u>ACT Interquartile</u>	<u>Average ACT Composite Scores</u>					
		<u>All Students¹</u>			<u>Core Curriculum¹</u>		
		<u>Illinois State University</u>	<u>Illinois</u>	<u>National</u>	<u>Illinois</u>	<u>National</u>	
2008	22-26	Fall 2008	23.9	20.7	21.1	22.4	22.0
2009	22-26	Fall 2009	24.3	20.8	21.1	22.7	22.0
2010	22-26	Fall 2010	24.1	20.7	21.0	22.6	22.0
2011	22-26	Fall 2011	23.9	20.9	21.1	22.6	21.9
2012	22-25	Fall 2012	23.7	20.9	21.1	22.5	21.8

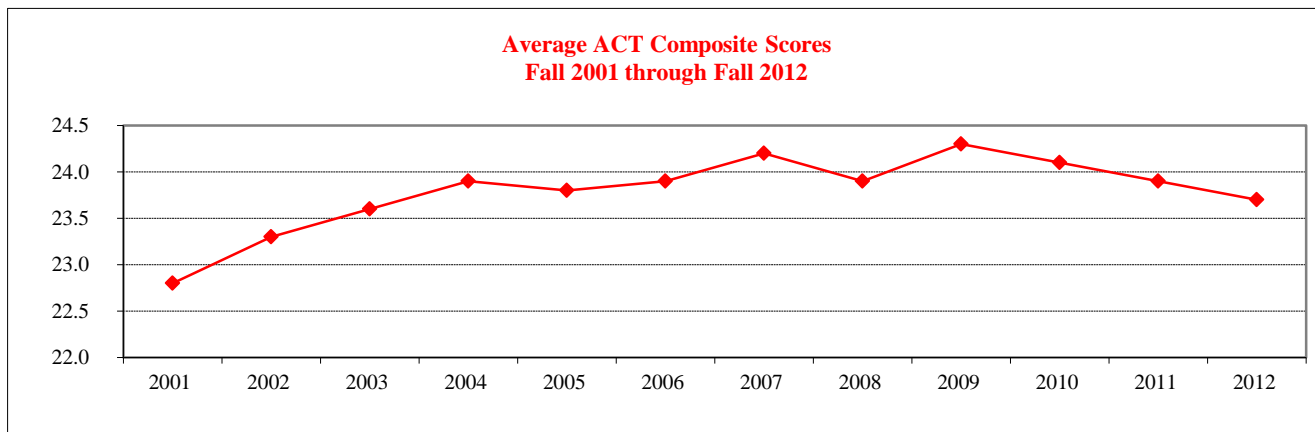
¹ Core curriculum is 4 years English; 3 years each Math, Social Sciences, & Natural Science.



<u>Subscores and Composite</u>	<u>New Beginning Freshmen</u>						
	<u>2006</u>	<u>2007</u>	<u>2008</u>	<u>2009</u>	<u>2010</u>	<u>2011</u>	<u>2012</u>
English	24.1	24.2	24.0	24.5	24.2	24.2	23.8
Math	23.5	23.7	23.6	24.0	23.7	23.4	23.5
Reading	24.4	24.6	24.2	24.4	24.5	23.9	23.7
Science	23.1	23.5	23.2	23.6	23.4	23.4	23.3
Composite	23.9	24.2	23.9	24.3	24.1	23.9	23.7

<u>Composite Scores By College</u>	<u>New Beginning Freshmen</u>						
	<u>2006</u>	<u>2007</u>	<u>2008</u>	<u>2009</u>	<u>2010</u>	<u>2011</u>	<u>2012</u>
Applied Science & Technology	23.6	24.0	23.7	23.6	23.7	23.5	22.9
Arts & Sciences	24.9	24.8	24.4	24.8	24.5	24.3	24.2
Business	24.0	24.0	23.9	24.2	23.9	23.8	23.8
Education	24.0	24.3	23.7	24.4	24.3	24.1	23.8
Fine Arts	25.2	24.5	24.9	25.2	25.0	25.0	24.4
Mennonite College of Nursing	26.2	26.7	26.4	26.6	26.4	26.4	25.4
Other Majors ¹	22.6	23.1	23.1	23.4	23.4	23.0	22.6
Total	23.9	24.2	23.9	24.3	24.1	23.9	23.7

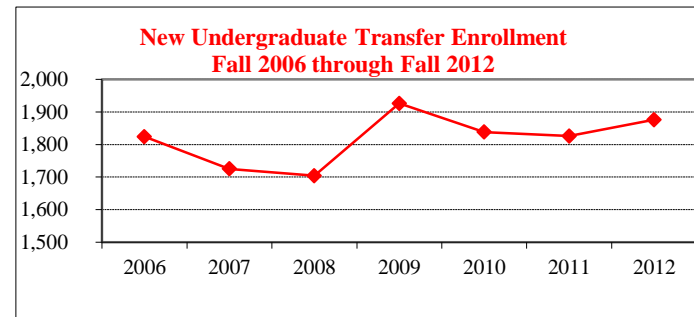
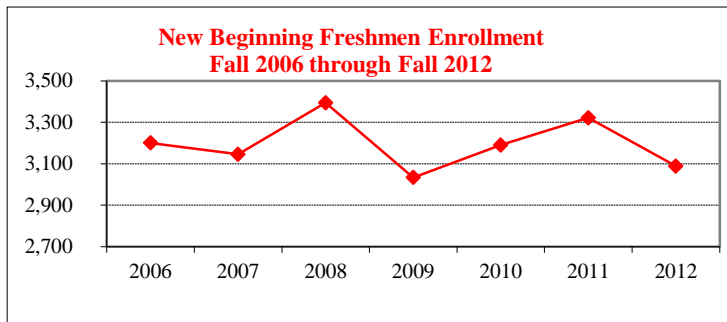
¹ Includes General Student and General Studies; Excludes Unclassified Students.





ENROLLMENT BY RACIAL/ETHNIC DESIGNATION ~ FALL 2006 through 2012

<u>Racial/Ethnic Designation</u>	<u>Fall New Beginning Freshmen Enrollment</u>						
	<u>2006</u>	<u>2007</u>	<u>2008</u>	<u>2009</u>	<u>2010</u>	<u>2011</u>	<u>2012</u>
American Indian/Alaskan Native	14	14	17	10	10	8	3
Black or African American	212	187	187	221	202	253	232
Asian	58	61	80	74	73	58	75
Hispanic	126	127	154	209	212	227	279
Hawaiian or Pacific Islander ¹	--	--	--	--	9	5	--
White	2,690	2,652	2,840	2,404	2,599	2,667	2,409
Two or more Selections ¹	--	--	--	--	61	77	78
Not Reported	92	101	110	104	17	14	4
Non-Resident Alien	8	3	6	11	7	12	8
Total	3,200	3,145	3,394	3,033	3,190	3,321	3,088



<u>Racial/Ethnic Designation</u>	<u>Fall New Transfer Student Enrollment</u>						
	<u>2006</u>	<u>2007</u>	<u>2008</u>	<u>2009</u>	<u>2010</u>	<u>2011</u>	<u>2012</u>
American Indian/Alaskan Native	5	9	7	8	--	2	4
Black or African American	69	47	47	107	75	77	116
Asian	26	22	37	33	25	18	28
Hispanic	62	65	48	101	86	101	122
Hawaiian or Pacific Islander ¹	--	--	--	--	1	4	1
White	1,593	1,494	1,472	1,578	1,606	1,570	1,553
Two or more Selections ¹	--	--	--	--	21	37	38
Not Reported	55	80	79	82	15	5	7
Non-Resident Alien	14	8	14	17	9	12	7
Total	1,824	1,725	1,704	1,926	1,838	1,826	1,876

¹ New racial/ethnic report codes as of fall 2010



STUDENTS ~ NEW
NEW UNDERGRADUATE TRANSFERS ~ FALL 2006 through FALL 2012

<u>Transfer Institution Type</u>	<u>2006</u>	<u>2007</u>	<u>2008</u>	<u>2009</u>	<u>2010</u>	<u>2011</u>	<u>2012</u>
Community Colleges	1,403	1,337	1,320	1,446	1,481	1,496	1,556
4-Year Colleges	421	388	384	480	357	330	320
Total	1,824	1,725	1,704	1,926	1,838	1,826	1,876
<u>Gender</u>	<u>2006</u>	<u>2007</u>	<u>2008</u>	<u>2009</u>	<u>2010</u>	<u>2011</u>	<u>2012</u>
Male	918	886	856	994	946	967	967
Female	906	839	848	932	892	859	909
<u>Class Level</u>	<u>2006</u>	<u>2007</u>	<u>2008</u>	<u>2009</u>	<u>2010</u>	<u>2011</u>	<u>2012</u>
Freshmen (0-29 Hours)	224	265	252	243	215	222	240
Sophomore (30-59 Hours)	638	627	601	664	659	649	678
Junior (60-89 Hours)	888	771	801	925	880	904	901
Senior (90 or More Hours)	74	62	50	94	84	51	57
<u>Associate Degree</u>	<u>2006</u>	<u>2007</u>	<u>2008</u>	<u>2009</u>	<u>2010</u>	<u>2011</u>	<u>2012</u>
Yes	883	776	783	706	836	858	844
No	941	949	921	1,220	1,002	946	1,032
Yes (as a percent of total)	48.4	45.0	46.0	36.7	45.5	47.0	45.0
No (as a percent of total)	51.6	55.0	54.0	63.3	54.5	51.8	55.0
Average Number of Hours Transferred	52.1	50.2	50.6	51.7	51.6	52.0	52.0
Average Transfer GPA	3.06	3.11	3.12	3.10	3.05	3.08	3.10

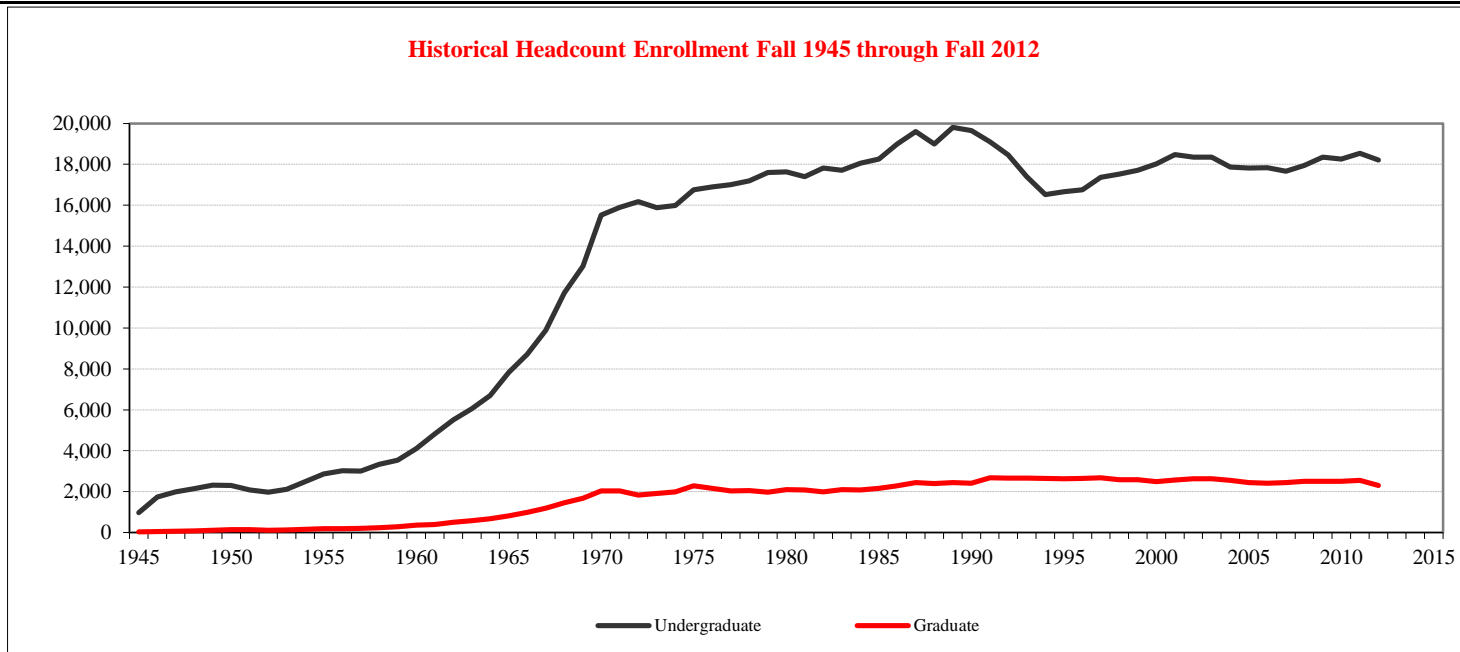


STUDENT ~ ENROLLMENT

GENDER, LEVEL, & HOURS ~ FALL 2006 through FALL 2012

	2006		2007		2008		2009		2010		2011		2012	
	Male	Female	Male	Female	Male	Female	Male	Female	Male	Female	Male	Female	Male	Female
Undergraduate														
12 or more hours	7,166	9,528	7,164	9,435	7,312	9,624	7,628	9,662	7,618	9,647	7,789	9,708	7,709	9,418
Less than 12 hours	524	624	503	553	494	519	478	576	493	496	531	507	556	524
Sub Total	7,690	10,152	7,667	9,988	7,806	10,143	8,106	10,238	8,111	10,143	8,320	10,215	8,265	9,942
Graduate														
9 or more hours	443	678	450	666	451	661	468	735	516	774	506	761	468	699
Less than 9 hours	418	880	418	915	419	970	396	913	372	846	420	858	363	765
Sub Total	861	1,558	868	1,581	870	1,631	864	1,648	888	1,620	926	1,619	831	1,464
Total	8,551	11,710	8,535	11,569	8,676	11,774	8,970	11,886	8,999	11,763	9,246	11,834	9,096	11,406

Historical Headcount Enrollment Fall 1945 through Fall 2012





STUDENT ~ ENROLLMENT
COLLEGE, RACIAL/ETHNIC & LEVEL ~ FALL 2012

	American Indian/ Alaskan Native	Black or African American	Asian	Hispanic	Hawaiian or Pacific Islander	White	Two or More Selections	No Response	Non Resident Alien	Total
<u>Undergraduate</u>										
Applied Science and Technology	5	245	67	200	4	3,091	72	32	17	3,733
Arts and Sciences	8	403	99	409	5	4,172	105	56	29	5,286
Business	6	176	63	193	1	2,611	63	31	28	3,172
Education	4	52	44	129	2	2,054	26	15	--	2,326
Fine Arts	5	43	18	71	1	849	26	29	2	1,044
Mennonite College of Nursing	2	19	8	24	2	395	5	5	1	461
Other	4	228	46	190	2	1,577	53	13	72	2,185
Total	34	1,166	345	1,216	17	14,749	350	181	149	18,207

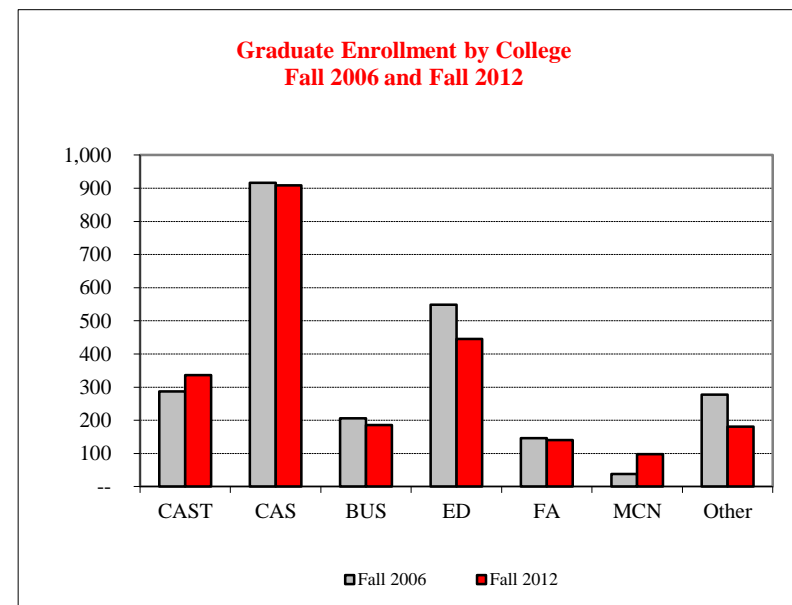
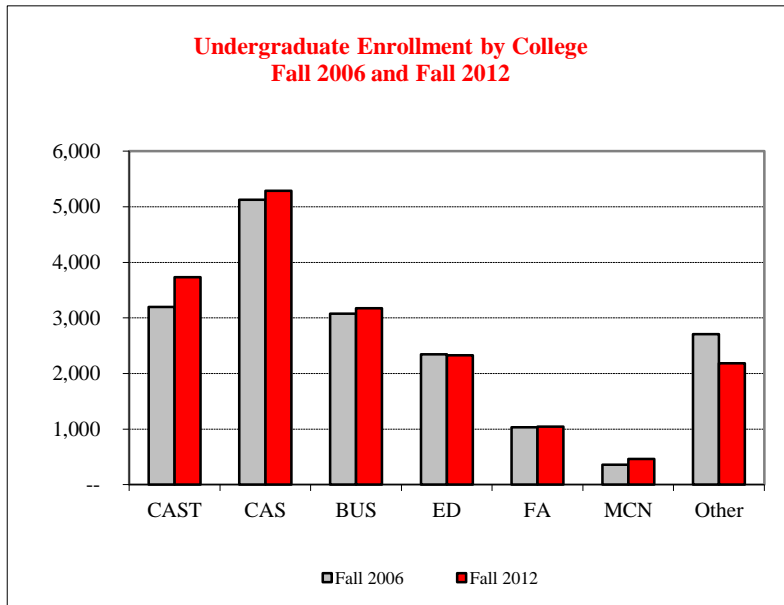
	American Indian/ Alaskan Native	Black or African American	Asian	Hispanic	Hawaiian or Pacific Islander	White	Two or More Selections	No Response	Non Resident Alien	Total
<u>Graduate</u>										
Applied Science and Technology	--	10	12	7	--	229	7	6	65	336
Arts and Sciences	3	34	16	41	--	685	6	21	103	909
Business	1	5	4	5	--	134	2	2	33	186
Education	--	24	3	19	--	385	7	3	4	445
Fine Arts	1	5	1	4	--	102	5	1	21	140
Mennonite College of Nursing	--	2	--	2	--	92	--	2	--	98
Other	--	14	3	9	--	143	4	1	7	181
Total	5	94	39	87	--	1,770	31	36	233	2,295



STUDENT ~ ENROLLMENT

COLLEGE & LEVEL ~ FALL 2006 and Fall 2012

	Fall 2006			Fall 2012			Percent Change		
	Undergraduate	Graduate	Total	Undergraduate	Graduate	Total	Undergraduate	Graduate	Total
Applied Science and Technology	3,196	287	3,483	3,733	336	4,069	16.8	17.1	16.8
Arts and Sciences	5,126	916	6,042	5,286	909	6,195	3.1	(0.8)	2.5
Business	3,075	206	3,281	3,172	186	3,358	3.2	(9.7)	2.3
Education	2,348	549	2,897	2,326	445	2,771	(0.9)	(18.9)	(4.3)
Fine Arts	1,035	146	1,181	1,044	140	1,184	0.9	(4.1)	0.3
Mennonite College of Nursing	356	38	394	461	98	559	29.5	157.9	41.9
Other	2,706	277	2,983	2,185	181	2,366	(19.3)	(34.7)	(20.7)
Total	17,842	2,419	20,261	18,207	2,295	20,502	2.0	(5.1)	1.2

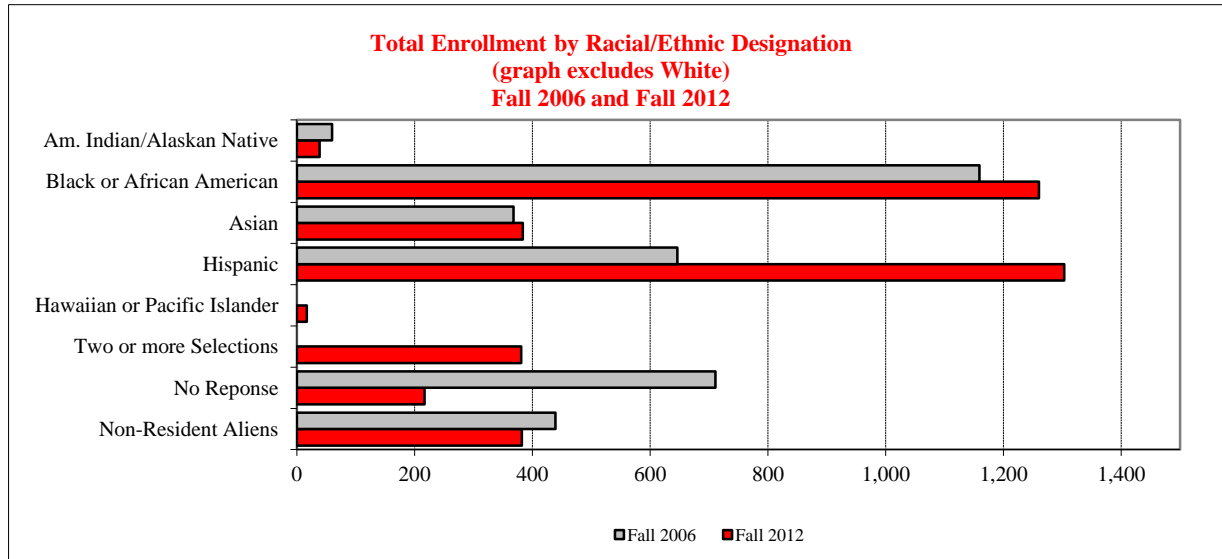




STUDENT ~ ENROLLMENT

RACIAL/ETHNIC & LEVEL ~ FALL 2006 and FALL 2012

Racial/Ethnic Designation	Fall 2006			Fall 2012			Percent Change		
	Undergraduate	Graduate	Total	Undergraduate	Graduate	Total	Undergraduate	Graduate	Total
American Indian/Alaskan Native	54	6	60	34	5	39	(37.0)	(16.7)	(35.0)
Black or African American	1,059	100	1,159	1,166	94	1,260	10.1	(6.0)	8.7
Asian	316	52	368	345	39	384	9.2	(25.0)	4.3
Hispanic	597	49	646	1,216	87	1,303	103.7	77.6	101.7
Hawaiian or Pacific Islander ¹	--	--	--	17	--	17	--	--	--
White	15,035	1,843	16,878	14,749	1,770	16,519	(1.9)	(4.0)	(2.1)
Two or more Selections ¹	--	--	--	350	31	381	--	--	--
Not Reported	644	67	711	181	36	217	(71.9)	(46.3)	(69.5)
Non-Resident Alien	137	302	439	149	233	382	8.8	(22.8)	(13.0)
Total	17,842	2,419	20,261	18,207	2,295	20,502	2.0	(5.1)	1.2



¹ New racial/ethnic report codes as of fall 2010



STUDENT ~ ENROLLMENT
CLASS AND AGE ~ FALL 2012

<u>Age as of</u> <u>September 1, 2012</u>	<u>Undergraduate</u>						<u>Graduate</u>				<u>Grand</u> <u>Total</u>
	<u>Freshmen</u>	<u>Sophomore</u>	<u>Junior</u>	<u>Senior</u>	<u>Unclassified</u>	<u>Total</u>	<u>Masters</u>	<u>Certificate</u>	<u>Doctoral</u>	<u>Total</u>	
Under 18	56	1	--	--	5	62	--	--	--	--	62
18 - 19	4,043	2,000	95	11	8	6,157	1	--	--	1	6,158
20 - 21	110	1,459	3,778	2,380	34	7,761	20	1	1	22	7,783
22 - 24	21	80	513	2,550	23	3,187	705	12	33	750	3,937
25 - 29	8	30	122	436	3	599	567	6	88	661	1,260
30 - 39	1	12	78	212	4	307	374	12	131	517	824
40 - 49	2	3	26	59	1	91	152	6	81	239	330
50 - 59	--	2	6	27	--	35	55	--	30	85	120
60 or over	--	1	--	7	--	8	10	--	10	20	28
Total	4,241	3,588	4,618	5,682	78	18,207	1,884	37	374	2,295	20,502

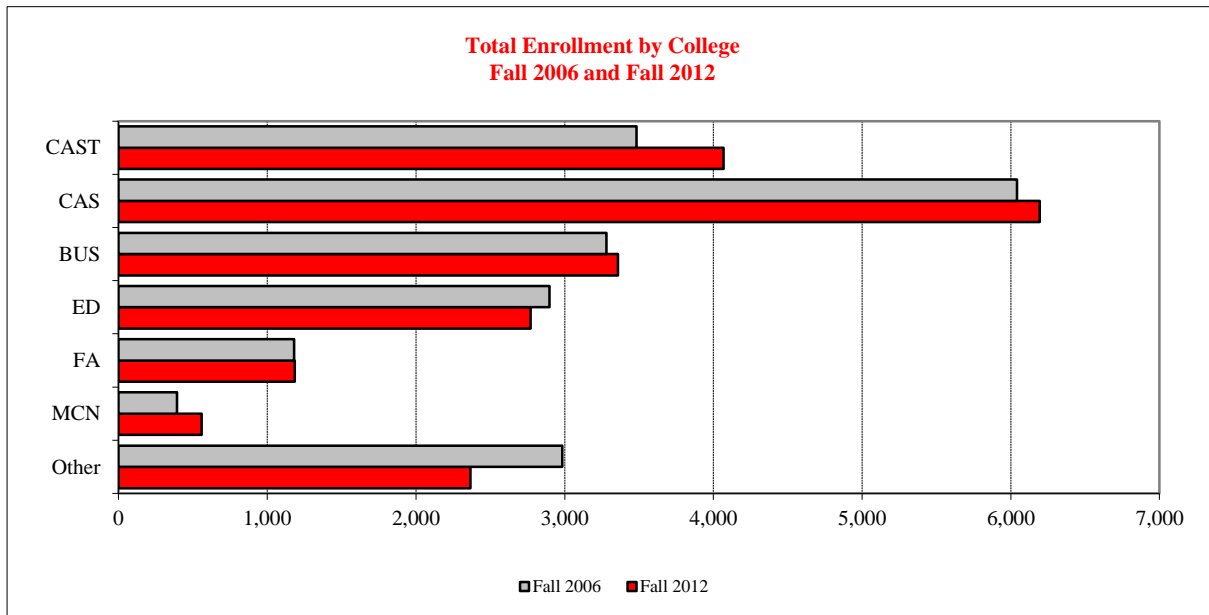




STUDENT ~ ENROLLMENT

TOTAL COLLEGE AND GENDER ~ FALL 2006 and FALL 2012

<u>College</u>	<u>Fall 2006</u>			<u>Fall 2012</u>			<u>Percent Change</u>		
	<u>Male</u>	<u>Female</u>	<u>Total</u>	<u>Male</u>	<u>Female</u>	<u>Total</u>	<u>Male</u>	<u>Female</u>	<u>Total</u>
Applied Science and Technology	2,000	1,483	3,483	2,299	1,770	4,069	15.0	19.4	16.8
Arts and Sciences	2,497	3,545	6,042	2,539	3,656	6,195	1.7	3.1	2.5
Business	1,957	1,324	3,281	2,254	1,104	3,358	15.2	(16.6)	2.3
Education	332	2,565	2,897	374	2,397	2,771	12.7	(6.5)	(4.3)
Fine Arts	487	694	1,181	483	701	1,184	(.8)	1.0	0.3
Mennonite College of Nursing	30	364	394	52	507	559	73.3	39.3	41.9
Other	1,248	1,735	2,983	1,095	1,271	2,366	(12.3)	(26.7)	(20.7)
Total	8,551	11,710	20,261	9,096	11,406	20,502	6.4	(2.6)	1.2

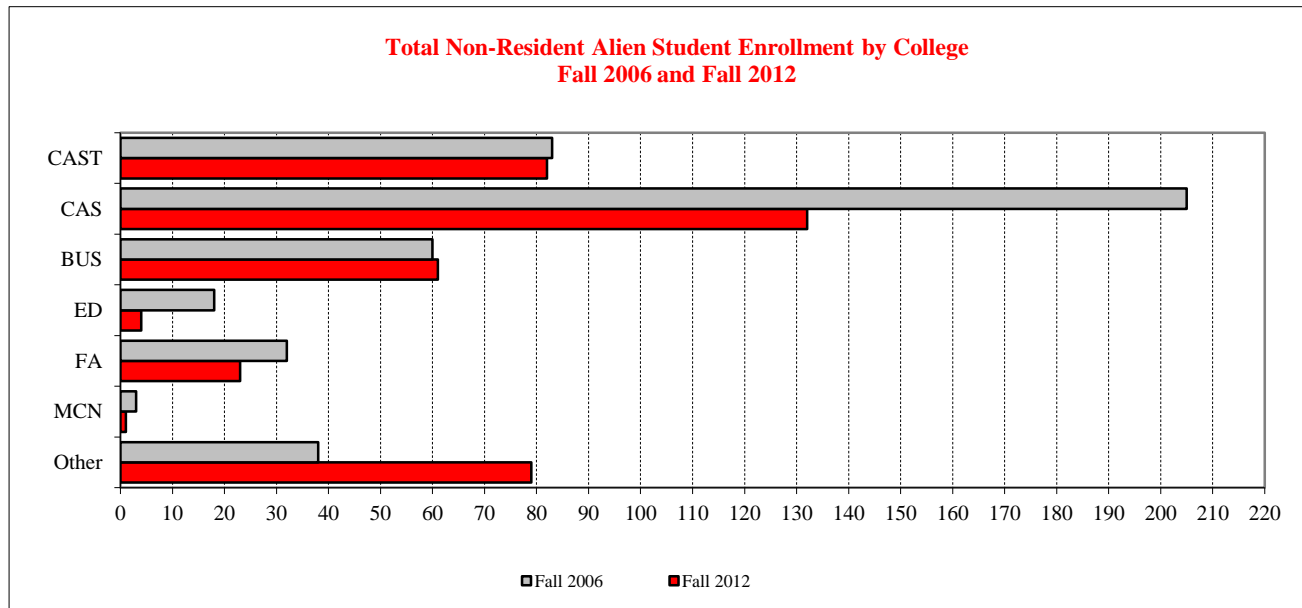




STUDENT ~ ENROLLMENT

NON-RESIDENT ALIEN STUDENTS ~ FALL 2006 & FALL 2012

	Fall 2006			Fall 2012			Percent Change		
	Undergraduate	Graduate	Total	Undergraduate	Graduate	Total	Undergraduate	Graduate	Total
Applied Science and Technology	20	63	83	17	65	82	(15.0)	3.2	(1.2)
Arts and Sciences	52	153	205	29	103	132	(44.2)	(32.7)	(35.6)
Business	23	37	60	28	33	61	21.7	(10.8)	1.7
Education	3	15	18	--	4	4	(100.0)	(73.3)	(77.8)
Fine Arts	7	25	32	2	21	23	(71.4)	(16.0)	(28.1)
Mennonite College of Nursing	2	1	3	1	--	1	(50.0)	--	(66.7)
Other	30	8	38	72	7	79	140.0	(12.5)	107.9
Total	137	302	439	149	233	382	8.8	(22.8)	(13.0)



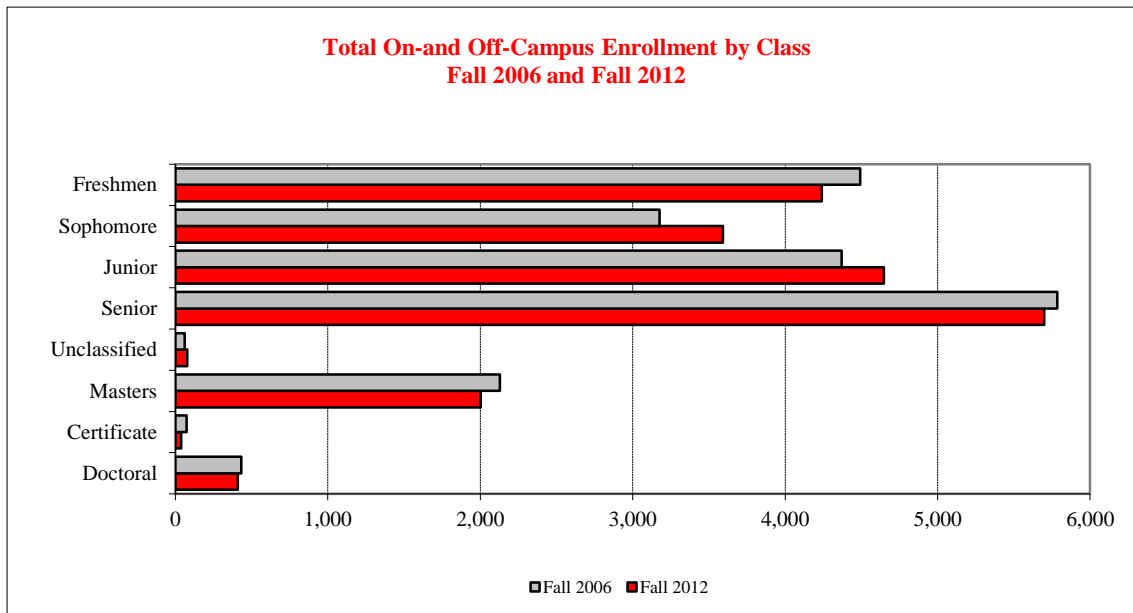


STUDENT ~ ENROLLMENT

ON/OFF-CAMPUS & CLASS ~ FALL 2006 and FALL 2012

	Fall 2006				Fall 2012				Percent Change			
	<u>On-Campus</u>	<u>Off-Campus</u>	<u>Total</u>	<u>FTE</u> ¹	<u>On-Campus</u>	<u>Off-Campus</u>	<u>Total</u>	<u>FTE</u> ¹	<u>On-Campus</u>	<u>Off-Campus</u>	<u>Total</u>	<u>FTE</u> ¹
Freshmen	4,492	--	4,492	4,340	4,241	--	4,241	4,065	(5.6)	--	(5.6)	(6.3)
Sophomore	3,176	--	3,176	3,078	3,588	3	3,591	3,432	13.0	--	13.1	11.5
Junior	4,350	20	4,370	4,065	4,618	30	4,648	4,302	6.2	50.0	6.4	5.8
Senior	5,766	20	5,786	5,057	5,682	17	5,699	4,940	(1.5)	(15.0)	(1.5)	(2.3)
Unclassified	58	3	61	27	78	--	78	55	34.5	(100.0)	27.9	103.7
Masters	1,994	135	2,129	1,597	1,884	118	2,002	1,570	(5.5)	(12.6)	(6.0)	(1.7)
Certificate	68	6	74	47	37	1	38	28	(45.6)	--	(48.6)	(40.4)
Doctoral	357	76	433	258	374	35	409	283	4.8	(53.9)	(5.5)	9.7
Total	20,261	260	20,521	18,469	20,502	204	20,706	18,675	1.2	(21.5)	0.9	1.1

¹ Full-Time Equivalency (FTE) = credit hours/15 for undergraduate students; credit hours/9 for graduate students.

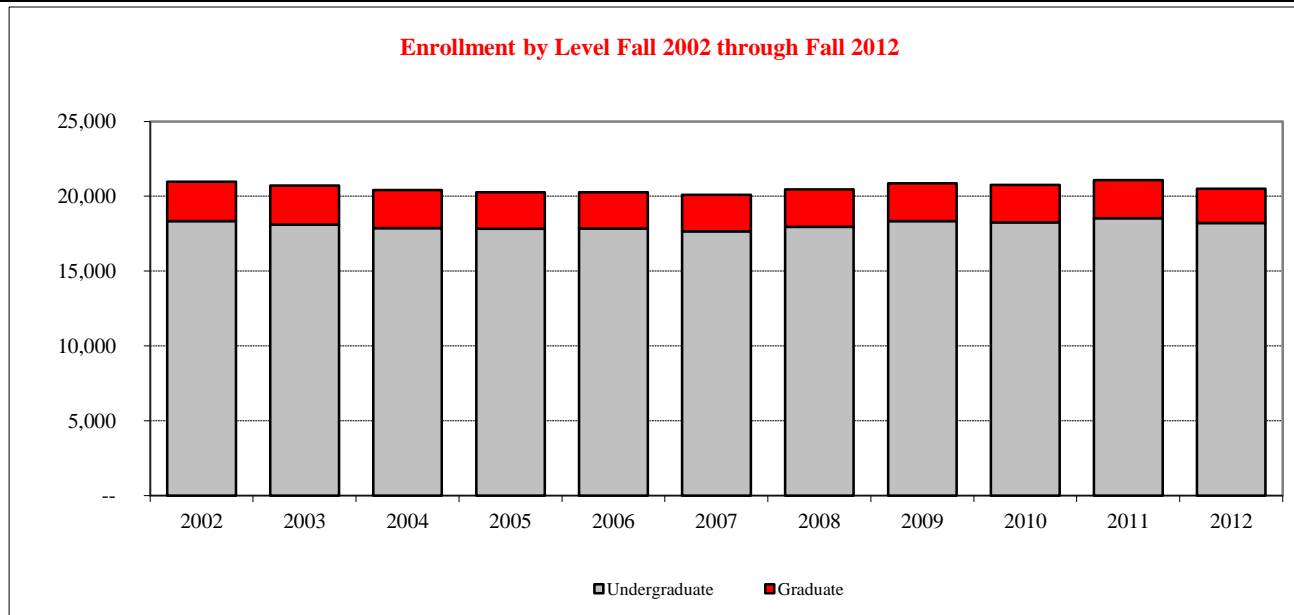
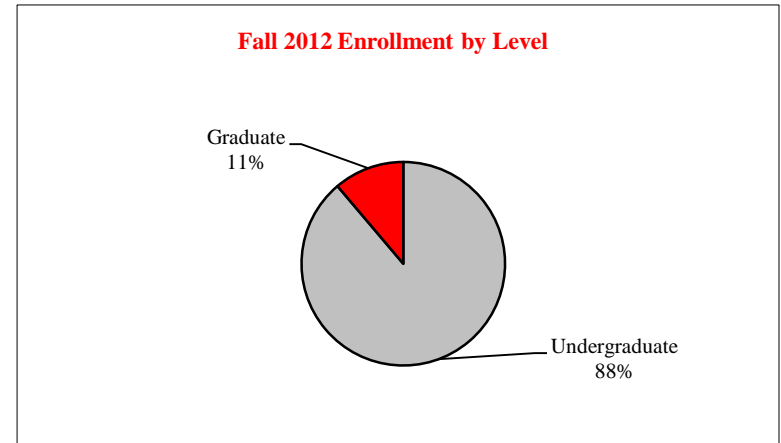




STUDENT ~ ENROLLMENT

LEVEL ~ FALL 2002 through FALL 2012

<u>Fall</u>	<u>Undergraduate</u>	<u>Graduate</u>	<u>Total</u>
2002	18,352	2,623	20,975
2003	18,097	2,608	20,705
2004	17,866	2,553	20,419
2005	17,827	2,438	20,265
2006	17,842	2,419	20,261
2007	17,655	2,449	20,104
2008	17,949	2,501	20,450
2009	18,344	2,512	20,856
2010	18,254	2,508	20,762
2011	18,535	2,545	21,080
2012	18,207	2,295	20,502





STUDENT ~ ENROLLMENT
CLASS, GENDER & RACIAL/ETHNIC ~ FALL 2012

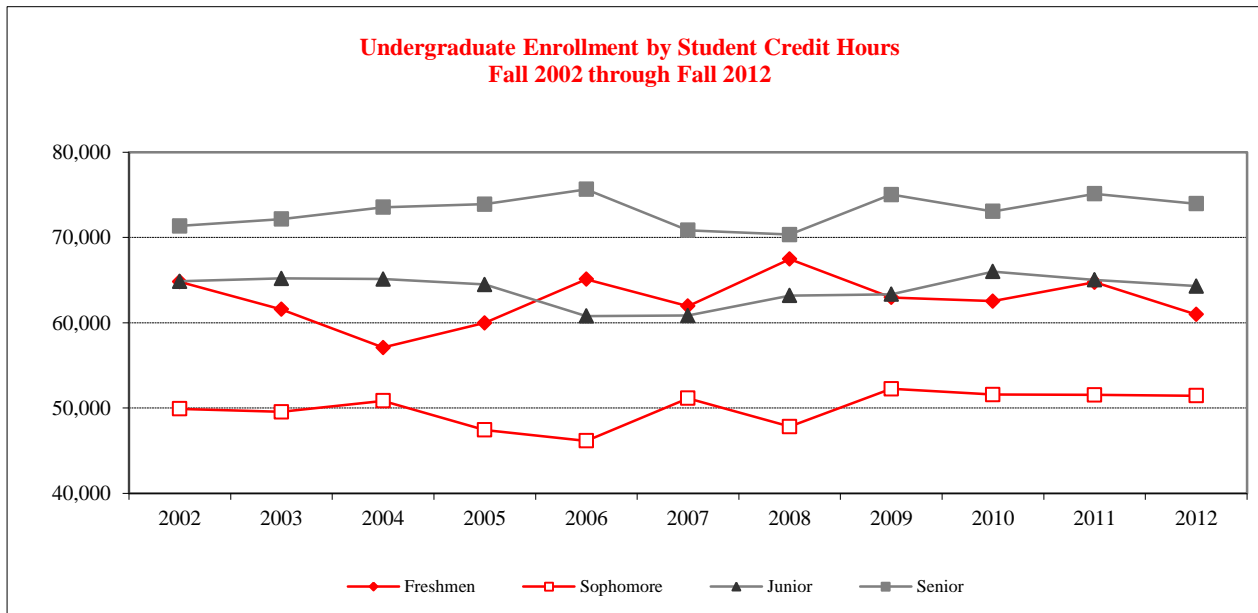
	American Indian/ Alaskan Native	Black or African American	Asian	Hispanic	Hawaiian or Pacific Islander	White	Two or More Selections	No Response	Non Resident Alien	Total
<u>Freshmen</u>										
Male	3	136	53	156	--	1,469	49	10	14	1,890
Female	1	247	45	216	1	1,779	57	1	4	2,351
<u>Sophomore</u>										
Male	2	95	31	107	1	1,310	33	5	9	1,593
Female	3	139	32	132	6	1,626	43	7	7	1,995
<u>Junior</u>										
Male	5	106	44	146	1	1,714	46	20	9	2,091
Female	8	153	46	145	5	2,091	52	16	11	2,527
<u>Senior</u>										
Male	6	134	42	144	1	2,205	41	57	15	2,645
Female	6	156	49	170	2	2,541	27	65	21	3,037
<u>Unclassified</u>										
Male	--	--	1	--	--	8	2	--	35	46
Female	--	--	2	--	--	6	--	--	24	32
<u>Undergraduate Total</u>										
Male	16	471	171	553	3	6,706	171	92	82	8,265
Female	18	695	174	663	14	8,043	179	89	67	9,942
<hr/>										
<u>Masters</u>										
Male	1	32	16	26	--	511	10	4	104	704
Female	3	37	20	41	--	950	16	17	96	1,180
<u>Certificate</u>										
Male	--	--	--	1	--	9	--	--	--	10
Female	--	3	--	3	--	21	--	--	--	27
<u>Doctoral</u>										
Male	1	4	1	6	--	90	1	5	9	117
Female	--	18	2	10	--	189	4	10	24	257
<u>Graduate Total</u>										
Male	2	36	17	33	--	610	11	9	113	831
Female	3	58	22	54	--	1,160	20	27	120	1,464



STUDENT ~ ENROLLMENT

CLASS LEVEL & CREDIT HOURS ~ FALL 2002 - FALL 2012

	<u>2002</u>	<u>2003</u>	<u>2004</u>	<u>2005</u>	<u>2006</u>	<u>2007</u>	<u>2008</u>	<u>2009</u>	<u>2010</u>	<u>2011</u>	<u>2012</u>
Freshmen	64,805	61,570	57,099	59,989	65,095	61,962	67,475	62,960	62,543	64,752	60,972
Sophomore	49,924	49,558	50,848	47,433	46,166	51,161	47,840	52,250	51,575	51,541	51,462
Junior	64,854	65,193	65,120	64,488	60,795	60,848	63,186	63,333	66,002	65,027	64,293
Senior	71,345	72,157	73,533	73,902	75,641	70,851	70,339	75,019	73,049	75,111	73,962
Unclassified	553	426	458	391	381	526	589	579	689	667	825
Masters	14,450	14,760	14,500	14,119	13,933	13,915	14,080	14,869	15,021	14,976	13,705
Certificate	204	208	289	248	393	507	476	437	322	353	248
Doctoral	2,068	2,073	2,122	2,091	2,053	1,969	1,937	2,026	2,291	2,474	2,380
Total Credit Hours	268,202	265,945	263,968	262,660	264,456	261,738	265,921	271,473	271,492	274,900	267,847





STUDENT ~ ENROLLMENT

Illinois Residents by County ~ Fall 2012

County	Undergrads	Graduates	County	Undergrads	Graduates	County	Undergrads	Graduates	
Adams	46	4	Hardin	--	--	Morgan	35	6	
Alexander	--	--	Henderson	--	--	Moultrie	15	--	
Bond	1	--	Henry	78	10	Ogle	82	5	
Boone	57	2	Iroquois	79	7	Peoria	390	46	
Brown	3	1	Jackson	11	--	Perry	--	--	
Bureau	76	9	Jasper	2	2	Piatt	55	8	
Calhoun	1	--	Jefferson	5	1	Pike	13	1	
Carroll	14	--	Jersey	22	2	Pope	--	--	
Cass	6	1	Jo Davies	17	1	Pulaski	1	--	
Champaign	325	36	Johnson	--	--	Putnam	13	1	
Christian	39	2	Kane	898	26	Randolph	3	1	
Clark	5	--	Kankakee	179	7	Richland	4	--	
Clay	1	--	Kendall	118	4	Rock Island	111	8	
Clinton	22	1	Knox	50	6	Saline	2	1	
Coles	20	3	Lake	1,295	41	Sangamon	264	29	
Cook	5,065	150	LaSalle	303	25	Schuyler	2	--	
Crawford	8	--	Lawrence	2	--	Scott	1	--	
Cumberland	3	--	Lee	26	3	Shelby	12	2	
DeKalb	95	5	Livingston	166	23	St. Clair	62	5	
DeWitt	79	12	Logan	46	15	Stark	12	2	
Douglas	24	--	Macon	156	20	Stephenson	52	3	
DuPage	1,731	55	Macoupin	28	2	Tazewell	368	53	
Edgar	8	1	Madison	107	5	Union	--	--	
Edwards	--	--	Marion	5	2	Vermilion	103	11	
Effingham	16	2	Marshall	21	1	Wabash	1	--	
Fayette	2	--	Mason	29	7	Warren	8	1	
Ford	40	5	Massac	--	--	Washington	8	1	
Franklin	3	--	McDonough	21	6	Wayne	--	--	
Fulton	45	10	McHenry	653	26	White	1	1	
Gallatin	2	--	McLean	1,600	710	Whiteside	72	9	
Greene	7	--	Menard	23	4	Will	1,508	51	
Grundy	191	13	Mercer	6	3	Williamson	8	1	
Hamilton	--	--	Monroe	13	--	Winnebago	274	22	
Hancock	7	4	Montgomery	23	2	Woodford	198	34	
							Illinois Total	17,602	1,579



Bold - McLean and Surrounding Counties
Red - Cook and Collar Counties



STUDENT ~ ENROLLMENT

STATE RESIDENCE ~ FALL 2012

<u>State</u>	<u>Undergraduates</u>	<u>Graduates</u>	<u>State</u>	<u>Undergraduates</u>	<u>Graduates</u>	<u>State</u>	<u>Undergraduates</u>	<u>Graduates</u>
Alabama	--	1	Maine	--	--	Pennsylvania	8	11
Alaska	3	--	Maryland	7	6	Rhode Island	1	2
Arizona	1	5	Massachusetts	3	7	South Carolina	--	5
Arkansas	5	2	Michigan	24	20	South Dakota	--	2
California	33	8	Minnesota	11	18	Tennessee	6	4
Colorado	11	8	Mississippi	2	4	Texas	16	20
Connecticut	4	1	Missouri	33	26	Utah	2	2
Delaware	1	1	Montana	1	1	Vermont	9	12
Dist. of Columbia	1	--	Nebraska	1	4	Virginia	--	3
Florida	29	10	Nevada	6	2	Washington	9	8
Georgia	10	7	New Hampshire	2	2	West Virginia	--	1
Hawaii	1	1	New Jersey	6	4	Wisconsin	45	24
Idaho	1	3	New Mexico	4	1	Wyoming	--	2
Illinois	17,602	1,579	New York	11	10	Territories	1	--
Indiana	45	22	North Carolina	4	6	U.S. Foreign	29	9
Iowa	20	25	North Dakota	--	2	Unknown	27	144
Kansas	5	4	Ohio	11	15			
Kentucky	2	3	Oklahoma	5	1			
Louisiana	--	3	Oregon	--	1	U.S. Total	18,058	2,062

Bold - Illinois and Top Ten Feeder States

- 93.6% of All Students are Residents of Illinois (Undergraduate 96.7%; Graduate 68.8%)
- 23.1% of All Students are Residents of Cook County (Undergraduate 27.8%; Graduate 6.5%)
- 56.1% of All Students are from Cook County and Collar counties (Undergraduate 61.2%; Graduate 15.2%)
- 8.9% of All Students are from McLean County (Undergraduate 8.8%; Graduate 30.9%)
- 23.1% of All Students are from McLean County and Surrounding Counties (Undergraduate 20.5%; Graduate 43.7%)
- Students come from 91 of the 102 Illinois Counties; 49 of the United States; and 66 Countries outside the U.S.



STUDENT ~ ENROLLMENT
NON-RESIDENT ALIEN STUDENTS ~ FALL 2012

	<u>Undergraduates</u>	<u>Graduates</u>		<u>Undergraduates</u>	<u>Graduates</u>		<u>Undergraduates</u>	<u>Graduates</u>
AFRICA			ASIA (con't)			LATIN AMERICA (con't)		
Algeria	1	--	Taiwan	6	4	South America		
Cote D Ivoire	--	2	Thailand	2	6	Argentina	--	1
Ghana	--	10	Uzbekistan	--	2	Brazil	21	3
Kenya	--	2	Vietnam	4	2	Colombia	1	2
Morocco	2	1	EUROPE			Paraguay	--	2
Nigeria	2	6	Austria	--	1	Venezuela	1	--
Rwanda	--	1	Estonia	1	1	MIDDLE EAST		
Sierra Leone	--	1	France	6	1	Bahrain	1	--
South Africa	1	2	Germany	4	7	Iran, Islamic Rep	--	2
Tanzania, Unite	--	1	Ireland	2	--	Jordan	--	2
Togo	1	--	Italy	1	--	Lebanon	--	1
Ugnada	--	1	Latvia	--	1	Oman	--	1
ASIA			Norway	1	--	Saudi Arabia	2	3
Azerbaijan	--	2	Romania	--	1	Syrian Arab Rep.	--	1
Bangladesh	--	1	Serbia	2	1	Turkey	1	5
China	26	43	Spain	1	3	NORTH AMERICA		
Georgia	--	1	Sweden	6	--	Canada	7	1
Hong Kong	1	2	United Kingdom	6	2	United States	18,058	2,062
India	5	73	LATIN AMERICA			OCEANIA		
Indonesia	--	1	Caribbean			Australia	5	1
Japan	6	3	Bahamas	1	--	New Zeland	1	--
Korea	10	11	Barbados	4	--	Non-Resident Alien		
Kyrgyzstan	--	1	Cuba	1	--	149	233	
Malaysia	2	1	Central America			Total Enrollment		
Myanmar	--	1	Honduras	1	--	18,207	2,295	
Nepal	--	5	Mexico	2	--			
Pakistan	--	2						
Russian Federal	1	--						
Sri Lanka	--	2						



DEGREES CONFERRED

COLLEGE ~ FISCAL YEAR 2006 through FISCAL YEAR 2012

<u>College</u>	<u>Undergraduate</u>						
	<u>FY 2006</u>	<u>FY 2007</u>	<u>FY 2008</u>	<u>FY 2009</u>	<u>FY 2010</u>	<u>FY 2011</u>	<u>FY 2012</u>
Applied Science and Technology	993	1,005	981	938	966	977	1,067
Arts and Sciences	1,378	1,522	1,430	1,367	1,421	1,393	1,431
Business	748	752	731	774	902	797	837
Education	692	630	598	576	647	645	622
Fine Arts	203	214	228	229	230	235	229
Mennonite College of Nursing	104	124	114	118	133	122	139
Other ¹	40	59	104	115	125	118	127
Total	4,158	4,306	4,186	4,117	4,424	4,287	4,452

<u>College</u>	<u>Graduate</u>						
	<u>FY 2006</u>	<u>FY 2007</u>	<u>FY 2008</u>	<u>FY 2009</u>	<u>FY 2010</u>	<u>FY 2011</u>	<u>FY 2012</u>
Applied Science and Technology	136	108	136	125	125	182	147
Arts and Sciences	288	282	243	281	305	335	376
Business	103	98	95	127	115	140	134
Education	225	171	221	184	197	168	210
Fine Arts	51	64	51	47	46	50	60
Mennonite College of Nursing	14	18	7	10	14	21	23
Total	817	741	753	774	802	896	950

<u>College</u>	<u>Total</u>						
	<u>FY 2006</u>	<u>FY 2007</u>	<u>FY 2008</u>	<u>FY 2009</u>	<u>FY 2010</u>	<u>FY 2011</u>	<u>FY 2012</u>
Applied Science and Technology	1,129	1,113	1,117	1,063	1,091	1,159	1,214
Arts and Sciences	1,666	1,804	1,673	1,648	1,726	1,728	1,807
Business	851	850	826	901	1,017	937	971
Education	917	801	819	760	844	813	832
Fine Arts	254	278	279	276	276	285	289
Mennonite College of Nursing	118	142	121	128	147	143	162
Other ¹	40	59	104	115	125	118	127
Total	4,975	5,047	4,939	4,891	5,226	5,183	5,402

¹ Other includes: Interdisciplinary Studies, and University Studies.



DEGREES CONFERRED

UNDERGRADUATE, GENDER & RACIAL/ETHNIC DESIGNATION

	Male						
Racial/Ethnic Designation	FY 2006	FY 2007	FY 2008	FY 2009	FY 2010	FY 2011	FY 2012
American Indian/Alaskan Native	2	8	1	3	4	8	4
Black or African American	63	59	68	73	70	69	65
Asian	29	22	29	31	34	38	32
Hispanic	50	60	62	48	68	62	94
Hawaiian or Pacific Islander ¹	--	--	--	--	--	--	1
White	1,520	1,632	1,515	1,498	1,624	1,606	1,641
Two or more Selections ¹	--	--	--	--	--	5	14
Not Reported	23	49	71	63	84	70	74
Non-Resident Alien	21	20	14	10	9	12	7
Total	1,708	1,850	1,760	1,726	1,893	1,870	1,932
	Female						
Racial/Ethnic Designation	FY 2006	FY 2007	FY 2008	FY 2009	FY 2010	FY 2011	FY 2012
American Indian/Alaskan Native	5	6	5	8	7	8	9
Black or African American	135	129	139	130	96	103	111
Asian	33	45	41	43	44	36	32
Hispanic	72	73	92	63	82	103	135
Hawaiian or Pacific Islander ¹	--	--	--	--	--	1	1
White	2,160	2,151	2,043	2,030	2,199	2,080	2,154
Two or more Selections ¹	--	--	--	--	--	5	15
Not Reported	25	35	78	100	87	68	51
Non-Resident Alien	20	17	28	17	16	13	12
Total	2,450	2,456	2,426	2,391	2,531	2,417	2,520
	Total						
Racial/Ethnic Designation	FY 2006	FY 2007	FY 2008	FY 2009	FY 2010	FY 2011	FY 2012
American Indian/Alaskan Native	7	14	6	11	11	16	13
Black or African American	198	188	207	203	166	172	176
Asian	62	67	70	74	78	74	64
Hispanic	122	133	154	111	150	165	229
Hawaiian or Pacific Islander ¹	--	--	--	--	--	1	2
White	3,680	3,783	3,558	3,528	3,823	3,686	3,795
Two or more Selections ¹	--	--	--	--	--	10	29
Not Reported	48	84	149	163	171	138	125
Non-Resident Alien	41	37	42	27	25	25	19
Total	4,158	4,306	4,186	4,117	4,424	4,287	4,452

¹ New racial/ethnic report codes as of fall 2010



DEGREES CONFERRED

GRADUATE, LEVEL & RACIAL/ETHNIC DESIGNATION

<u>Racial/Ethnic Designation</u>	<u>Masters</u>						
	<u>FY 2006</u>	<u>FY 2007</u>	<u>FY 2008</u>	<u>FY 2009</u>	<u>FY 2010</u>	<u>FY 2011</u>	<u>FY 2012</u>
American Indian/Alaskan Native	--	2	2	2	1	3	3
Black or African American	36	20	31	21	22	31	24
Asian	12	6	22	17	24	19	20
Hispanic	12	17	16	18	16	19	29
Hawaiian or Pacific Islander ¹	--	--	--	--	--	--	1
White	588	529	493	532	534	631	684
Two or more Selections ¹	--	--	--	--	--	--	6
Not Reported	9	27	18	28	23	27	19
Non-Resident Alien	98	70	81	95	92	100	71
Total	755	671	663	713	712	830	857

<u>Racial/Ethnic Designation</u>	<u>IBHE Approved Certificate</u>						
	<u>FY 2006</u>	<u>FY 2007</u>	<u>FY 2008</u>	<u>FY 2009</u>	<u>FY 2010</u>	<u>FY 2011</u>	<u>FY 2012</u>
American Indian/Alaskan Native	--	--	--	1	1	--	--
Black or African American	--	2	--	1	1	--	--
Asian	1	2	--	--	1	1	2
Hispanic	1	--	--	--	--	--	--
Hawaiian or Pacific Islander ¹	--	--	--	--	--	--	--
White	8	17	33	12	22	22	39
Two or more Selections ¹	--	--	--	--	--	--	--
Not Reported	--	--	1	1	--	--	2
Non-Resident Alien	--	--	--	1	--	--	--
Total	10	21	34	16	25	23	43

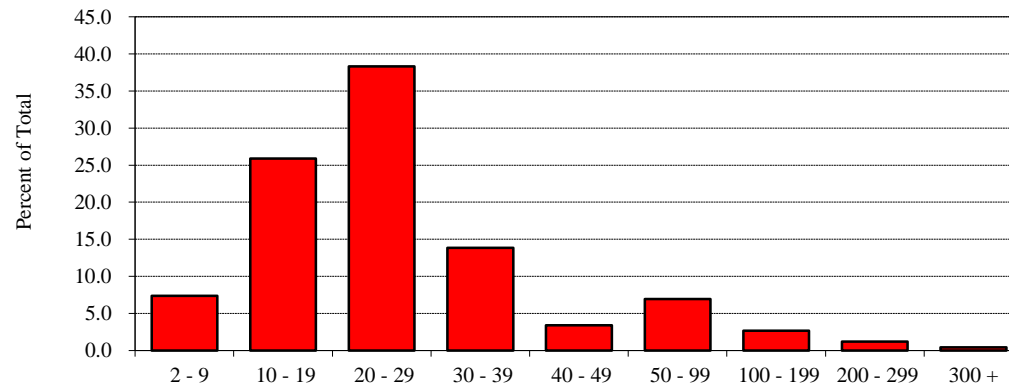
<u>Racial/Ethnic Designation</u>	<u>Doctoral</u>						
	<u>FY 2006</u>	<u>FY 2007</u>	<u>FY 2008</u>	<u>FY 2009</u>	<u>FY 2010</u>	<u>FY 2011</u>	<u>FY 2012</u>
American Indian/Alaskan Native	--	--	1	--	--	--	--
Black or African American	4	5	5	3	5	7	2
Asian	--	1	--	--	--	--	1
Hispanic	1	1	2	1	5	--	2
Hawaiian or Pacific Islander ¹	--	--	--	--	--	--	--
White	39	31	34	31	48	28	39
Two or more Selections ¹	--	--	--	--	--	--	--
Not Reported	--	--	--	--	--	3	--
Non-Resident Alien	8	11	14	10	7	5	6
Total	52	49	56	45	65	43	50

¹ New racial/ethnic report codes as of fall 2010



Class Size ¹	Fall 2009			Fall 2010			Fall 2011			Fall 2012		
	Number	Percent	Cumulative Percent	Number	Percent	Cumulative Percent	Number	Percent	Cumulative Percent	Number	Percent	Cumulative Percent
2 - 9	194	7.8	7.8	176	7.1	7.1	195	7.7	7.7	183	7.4	7.4
10 - 19	567	22.9	30.7	605	24.4	31.5	603	23.9	31.7	644	25.9	33.3
20 - 29	962	38.8	69.5	970	39.1	70.6	982	39.0	70.7	953	38.3	71.6
30 - 39	385	15.5	85.1	354	14.3	84.8	373	14.8	85.5	344	13.8	85.4
40 - 49	88	3.6	88.6	89	3.6	88.4	88	3.5	89.0	84	3.4	88.8
50 - 99	180	7.3	95.9	186	7.5	95.9	177	7.0	96.0	173	7.0	95.7
100 - 199	60	2.4	98.3	66	2.7	98.6	58	2.3	98.3	66	2.7	98.4
200 - 299	28	1.1	99.4	30	1.2	99.8	31	1.2	99.6	30	1.2	99.6
300 +	14	0.6	100.0	5	0.2	100.0	11	0.4	100.0	10	0.4	100.0
Total	2,478	100.0	100.0	2,481	100.0	100.0	2,518	100.0	100.0	2,487	100.0	100.0

**Class Size Distribution
 Fall 2012**



¹ Breakdowns are based on *U.S. News and World Report* definition.



STUDENT ~ OTHER

TIME-TO-DEGREE ~ FALL 2001 through FALL 2008

	Fall Cohort							
	<u>2001</u>	<u>2002</u>	<u>2003</u>	<u>2004</u>	<u>2005</u>	<u>2006</u>	<u>2007</u>	<u>2008</u>
New Beginning Freshmen	3,340	3,108	3,097	2,834	3,179	3,200	3,145	3,394

	Number of Degree Recipients as of August 2012							
	<u>2001</u>	<u>2002</u>	<u>2003</u>	<u>2004</u>	<u>2005</u>	<u>2006</u>	<u>2007</u>	<u>2008</u>
Graduated from Fall Cohort	2,230	2,208	2,176	2,043	2,274	2,273	2,145	1,544

	Time-to-Degree for those who Graduated from Fall Cohort							
<u>Years</u>	<u>2001</u>	<u>2002</u>	<u>2003</u>	<u>2004</u>	<u>2005</u>	<u>2006</u>	<u>2007</u>	<u>2008</u>
Three or Fewer	0.5%	0.4%	0.5%	0.7%	0.6%	0.7%	1.2%	1.3%
Four	58.5%	57.7%	59.1%	62.0%	60.5%	65.1%	66.8%	98.7%
Five	32.4%	34.6%	33.2%	30.0%	33.6%	29.3%	32.0%	--
Six	6.1%	5.7%	5.2%	5.5%	4.4%	4.9%	--	--
Seven	1.4%	0.9%	1.2%	1.3%	1.1%	--	--	--
Eight	0.4%	0.4%	0.4%	0.4%	--	--	--	--
Nine	0.4%	0.3%	0.5%	--	--	--	--	--
Ten	0.2%	0.0%	--	--	--	--	--	--
	100.0%	100.0%	100.0%	100.0%	100.0%	100.0%	100.0%	100.0%

For native undergraduate students (Fall cohort 2005=6) who graduated from Illinois State University, 65.8 percent finished their degree in four years or less. An additional 29.3 percent graduated in the fifth year, and 4.9 percent graduated in the sixth year (boxes).



Fall to Fall Retention Rates	Percent of New Beginning Freshmen that Return for Second Fall Term					
	<u>2006</u>	<u>2007</u>	<u>2008</u>	<u>2009</u>	<u>2010</u>	<u>2011</u>
All Students	83.3%	83.4%	84.9%	85.0%	85.1%	82.3%
Male Students	81.6	81.4	83.6	83.5	82.6	81.5
Female Students	84.5	84.8	85.6	86.0	86.8	82.9
Black or African American Students	63.2	73.3	80.7	80.5	76.2	77.9
Hispanic Students	75.4	73.2	77.9	82.3	80.7	79.3

Six Year Graduation Rates	New Beginning Freshmen Cohort Year					
	<u>2001</u>	<u>2002</u>	<u>2003</u>	<u>2004</u>	<u>2005</u>	<u>2006</u>
All Students	65.1%	69.9%	68.8%	70.9%	70.8%	71.0%
Male Students	59.1	66.7	66.6	66.1	67.4	66.4
Female Students	68.7	71.8	70.2	73.9	72.8	74.2
Black or African American Students	50.7	52.0	45.2	51.6	41.8	42.0
Hispanic Students	56.3	53.6	50.0	58.8	63.4	57.9



**ILLINOIS STATE
UNIVERSITY**
Illinois' first public university



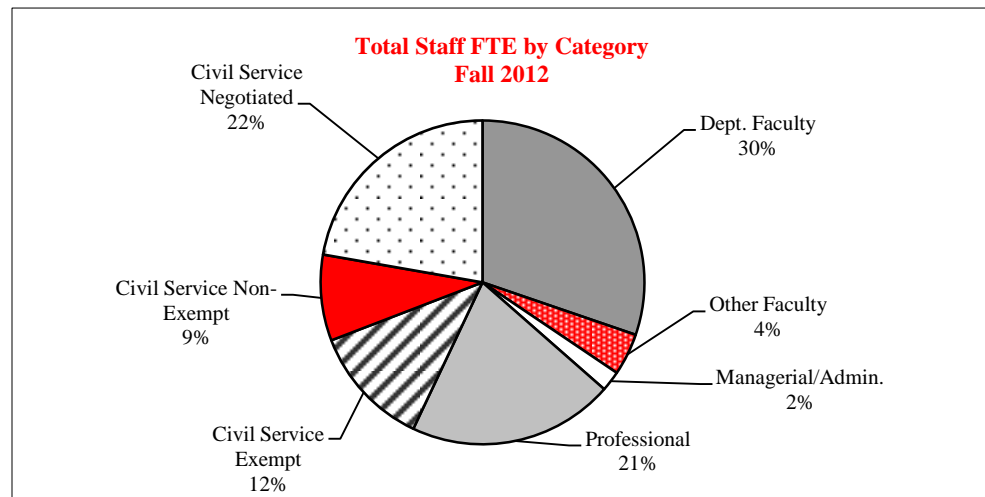
ILLINOIS STATE
UNIVERSITY
Illinois' first public university

UNIVERSITY
2012
FactBook

Faculty/Staff



<u>Employee Category</u>	<u>Fall 2011</u>			<u>Fall 2012</u>		
	<u>Full-Time Number</u>	<u>Part-Time FTE</u>	<u>Total FTE</u>	<u>Full-Time Number</u>	<u>Part-Time FTE</u>	<u>Total FTE</u>
Departmental Faculty ¹	882	111.2	993.2	860	123.4	983.4
Non-Departmental Faculty	7	3.8	10.8	8	5.4	13.4
Library Faculty	26	--	26.0	26	1.6	27.6
Lab School Faculty	89	2.2	91.2	87	8.2	95.2
Managerial/Administrative	64	1.0	65.0	65	0.9	65.9
Professional	616	30.1	646.1	641	27.4	668.4
Civil Service						
Exempt	401	1.8	402.8	392	3.0	395.0
Non-Exempt	248	9.9	257.9	268	10.9	278.9
Negotiated	772	10.5	782.5	714	9.2	723.2
Civil Service Total	1,421	0.0	1,421.0	1,374	0.0	1,374.0
University Total	3,105	170.4	3,275.4	3,061	190.0	3,251.0



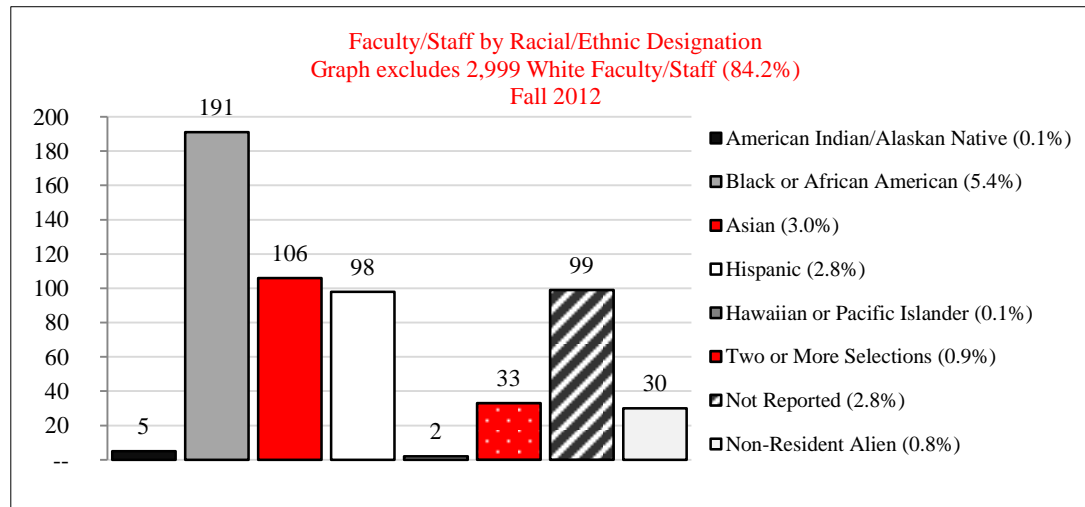
¹ Includes Department Chairs and part-time faculty whose major appointment is Administrative/Professional or Civil Service



FACULTY/STAFF

CATEGORY, GENDER AND RACIAL/ETHNIC DESIGNATION ~ FALL 2012

	Faculty				Administrative/ Professional	Civil Service	Total
	Departmental ¹	Non-Dept.	Library	Lab School			
Gender							
Male	588	17	9	38	328	658	1,638
Female	624	24	20	74	432	751	1,925
Racial/Ethnic Designation							
American Indian/Alaskan Native	1	--	--	--	--	4	5
Black or African American	38	4	--	7	50	92	191
Asian	69	--	--	--	15	22	106
Hispanic	32	1	--	2	21	42	98
Hawaiian or Pacific Islander	1	--	--	--	1	--	2
White	983	32	27	99	636	1,222	2,999
Two or more Selections	8	2	--	--	11	12	33
Not Reported	55	2	1	4	23	14	99
Non-Resident Alien	25	--	1	--	3	1	30
Total	1,212	41	29	112	760	1,409	3,563



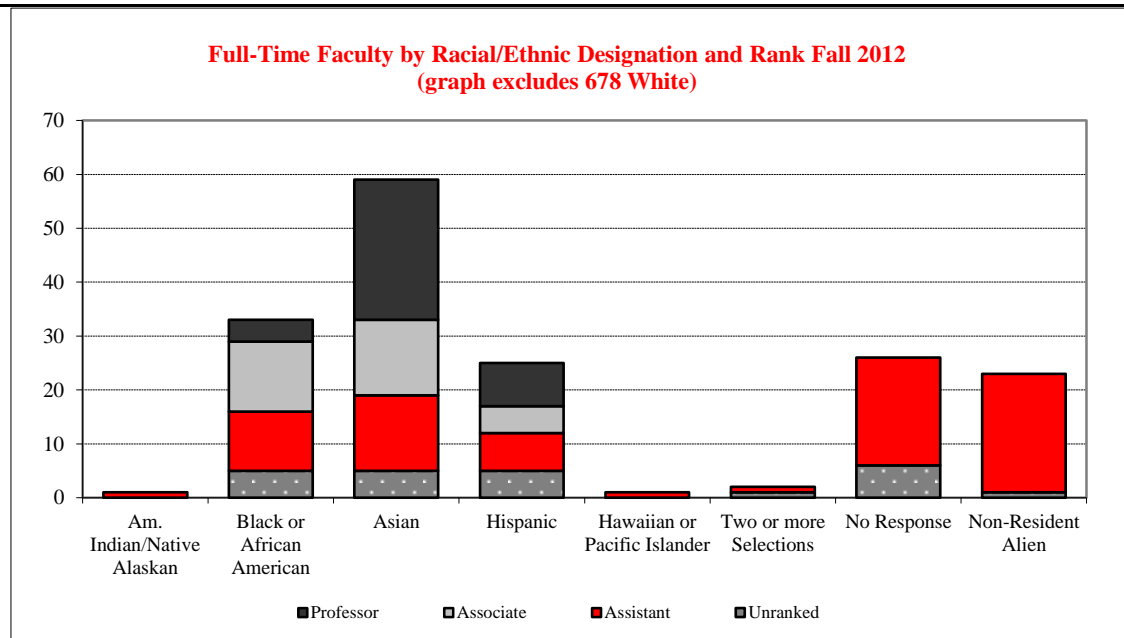
¹ Includes Department Chairs



RANK AND RACIAL/ETHNIC DESIGNATION ~ FALL 2012

<u>Faculty - Full-Time</u>	American Indian/ Alaskan Native	Black or African American	Asian	Hispanic	Hawaiian or Pacific Islander	White	Two or More Selections	No Response	Non Resident Alien	Total
Professor	--	4	26	8	--	195	2	4	--	239
Associate Professor	--	13	14	5	--	204	3	3	--	242
Assistant Professor	1	11	14	7	1	141	1	20	22	218
Unranked	--	5	5	5	--	138	1	6	1	161
Total	1	33	59	25	1	678	7	33	23	860

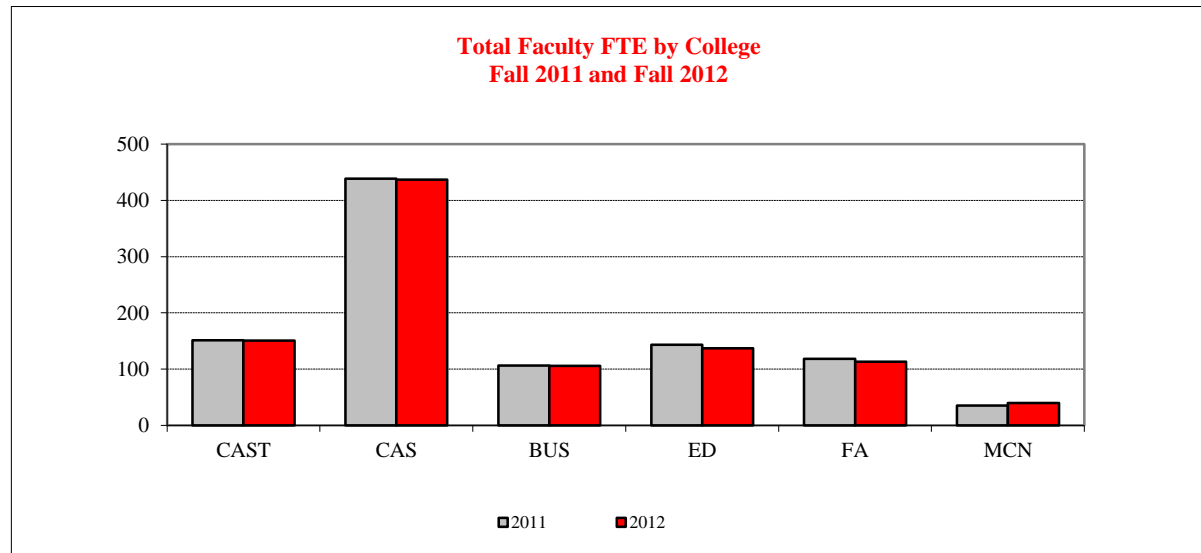
<u>Faculty - Part-Time</u>	American Indian/ Alaskan Native	Black or African American	Asian	Hispanic	Hawaiian or Pacific Islander	White	Two or More Selections	No Response	Non Resident Alien	Total
Unranked	--	5	10	7	--	305	1	22	2	352





FTE¹ BY COLLEGE, GENDER & TENURE STATUS ~ FALL 2011 and FALL 2012

College	Fall 2011					Fall 2012				
	Tenured/Tenure Track		Non-Tenure Track		Total	Tenured/Tenure Track		Non-Tenure Track		Total
	Male	Female	Male	Female		Male	Female	Male	Female	
Applied Science and Technology	71.0	35.0	19.5	25.9	151.4	66.0	38.0	19.0	27.5	150.5
Arts and Sciences	197.0	129.0	45.2	67.3	438.5	195.0	132.0	42.3	67.8	437.1
Business	54.0	27.0	15.0	10.6	106.6	52.0	27.0	17.2	9.4	105.6
Education	30.0	56.0	8.7	48.9	143.6	31.0	51.0	9.4	45.9	137.3
Fine Arts	52.0	44.0	13.3	8.8	118.0	49.0	43.0	11.0	10.4	113.4
Mennonite College of Nursing	4.0	11.0	1.1	19.0	35.1	3.0	12.0	0.8	23.7	39.5
<u>Total</u>	408.0	302.0	102.8	180.3	993.2	396.0	303.0	99.7	184.7	983.4

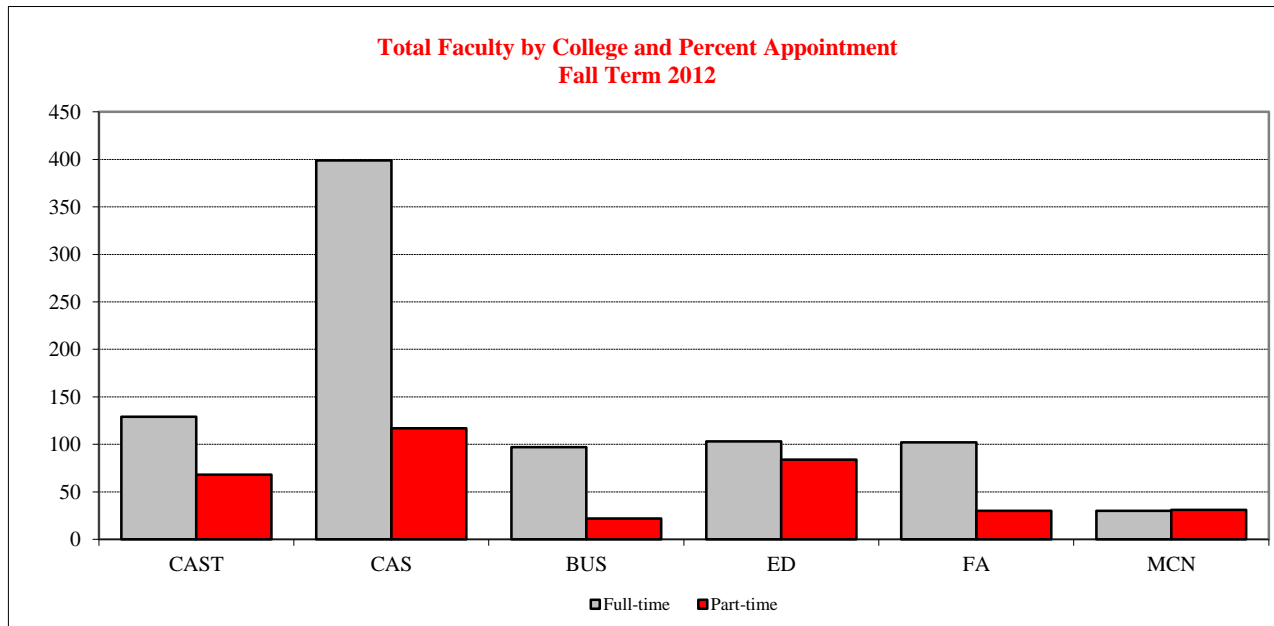


¹ Full-Time Equivalent (FTE) Faculty



COLLEGE & PERCENT APPOINTMENT ~ FALL 2006 through FALL 2012

College	2006		2007		2008		2009		2010		2011		2012	
	Full	Part	Full	Part	Full	Part	Full	Part	Full	Part	Full	Part	Full	Part
Applied Science and Technology	129	51	124	60	128	67	135	53	135	50	132	63	129	68
Arts and Sciences	408	92	398	106	406	113	404	110	395	123	399	122	399	117
Business	95	10	100	10	101	11	99	19	98	13	101	15	97	22
Education	92	80	95	83	99	89	104	82	110	83	112	77	103	84
Fine Arts	109	14	105	20	101	26	105	23	106	23	108	31	102	30
Mennonite College of Nursing	23	10	21	14	24	18	29	17	33	15	30	15	30	31
Total	856	257	843	293	859	324	876	304	877	307	882	323	860	352

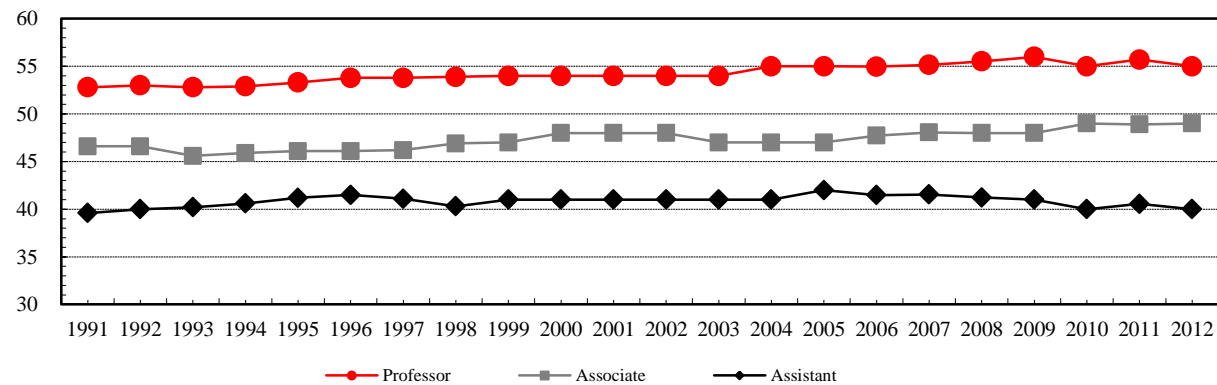


FACULTY

TENURED/TENURE TRACK DEPARTMENTAL, AGE BY RANK ~ FALL 2012

<u>Age¹ Range</u>	<u>Professor</u>	<u>Associate Professor</u>	<u>Assistant Professor</u>	<u>Total</u>
29 or Less	--	--	9	9
30 - 34	--	2	58	60
35 - 39	3	35	59	97
40 - 44	20	45	38	103
45 - 49	32	56	19	107
50 - 54	60	43	10	113
55 - 59	58	37	19	114
60 - 64	39	17	5	61
65 or Over	27	7	1	35
Total	239	242	218	699

**Average Age¹ of Tenured/Tenure Track
 Departmental Faculty
 Fall 1991 through Fall 2012**



¹ Age is calculated as of December 31st of the reported year prior to 2012. Fall 2012 age is reported as of September 16, 2012.

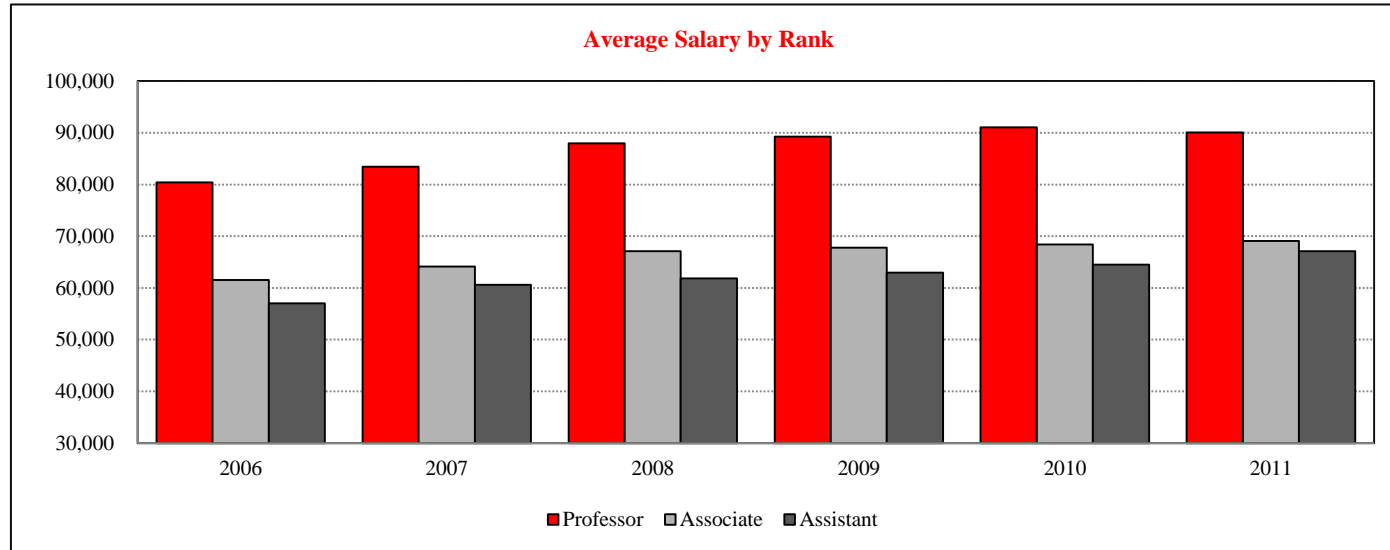
FACULTY/STAFF

AVERAGE ANNUAL SALARY ~ FALL 2006 THROUGH FALL 2011

Average Annual Salary for Tenured/Tenure Track Faculty¹

Faculty - Full-Time	Fall 2006		Fall 2007		Fall 2008		Fall 2009		Fall 2010		Fall 2011	
	Number	Average	Number	Average	Number	Average	Number	Average	Number	Average	Number	Average
Professor	240	80,408	236	83,458	233	87,965	234	89,236	244	91,026	219	90,049
Associate Professor	223	61,514	226	64,108	247	67,125	264	67,812	259	68,393	244	69,068
Assistant Professor	228	57,041	218	60,632	214	61,838	212	62,981	208	64,487	210	67,124

¹Data reported annually to American Association of University Professors.





**ILLINOIS STATE
UNIVERSITY**
Illinois' first public university



ILLINOIS STATE
UNIVERSITY
Illinois' first public university

UNIVERSITY
2012
FactBook

Resources



TOTAL EXPENDITURES & MANDATORY TRANSFERS ~ FY 2008 through 2012

(Dollars in thousands)

	<u>Total Operating Funds by Fund Type</u>				
	<u>Fiscal Year 2008</u>	<u>Fiscal Year 2009</u>	<u>Fiscal Year 2010</u>	<u>Fiscal Year 2011</u>	<u>Fiscal Year 2012</u>
State Appropriated Tax Funds and					
University Income Fund	\$174,895.9	\$191,923.4	\$195,128.3	\$203,055.6	\$216,836.4
Gifts, Grants and Contracts	35,606.1	33,864.0	39,057.0	47,196.9	46,532.6
Agency	45,422.9	48,609.3	49,766.0	51,628.4	55,745.3
Bond Revenue/Other Auxiliary	54,904.0	58,849.1	66,583.0	83,644.1	82,944.0
Total ¹	\$310,828.9	\$333,245.8	\$350,534.3	\$385,525.0	\$402,058.3

	<u>State Appropriated Funds by Object Class</u>				
	<u>Fiscal Year 2008</u>	<u>Fiscal Year 2009</u>	<u>Fiscal Year 2010</u>	<u>Fiscal Year 2011</u>	<u>Fiscal Year 2012</u>
Personal Services	\$125,890.4	\$133,269.5	\$133,940.5	\$140,329.6	\$148,844.0
Contractual	22,022.2	26,548.5	24,158.4	27,821.3	34,559.0
Equipment and Books	8,316.2	10,444.1	10,019.1	10,009.2	8,196.2
Commodities	2,530.1	2,644.3	2,713.1	2,709.9	2,556.7
Other	11,399.9	14,140.3	19,327.0	17,161.6	17,386.8
Group Health Insurance	3,078.3	3,078.3	3,078.3	3,078.3	3,078.3
Medicare	1,658.8	1,798.4	1,891.9	1,945.7	2,215.4
Total	\$174,895.9	\$191,923.4	\$195,128.3	\$203,055.6	\$216,836.4

	<u>State Appropriated Funds by Functional Classification</u>				
	<u>Fiscal Year 2008</u>	<u>Fiscal Year 2009</u>	<u>Fiscal Year 2010</u>	<u>Fiscal Year 2011</u>	<u>Fiscal Year 2012</u>
Instruction	\$92,100.3	\$97,183.3	\$95,461.0	\$102,623.7	\$107,261.6
Operation and Maintenance	28,307.1	32,651.2	34,378.2	32,204.5	31,068.6
Institutional Support	18,572.9	22,202.2	25,220.8	27,095.2	33,599.1
Organized Research	2,136.4	2,738.3	2,310.5	2,075.7	2,230.1
Public Service	3,660.8	4,545.9	3,301.7	2,612.1	2,616.5
Academic Support	16,324.4	16,757.0	17,650.0	18,102.8	19,035.4
Student Services	9,056.9	10,968.8	11,835.9	13,317.6	15,731.4
Group Health Insurance	3,078.3	3,078.3	3,078.3	3,078.3	3,078.3
Medicare	1,658.8	1,798.4	1,891.9	1,945.7	2,215.4
Total	\$174,895.9	\$191,923.4	\$195,128.3	\$203,055.6	\$216,836.4

¹ Excludes payments made on behalf of the University (e.g., retirement contributions); \$53.5 million in FY08, \$59.6 million in FY09, \$78.6 million in FY10 \$86.5 million in FY11 and \$100.4 in FY12.



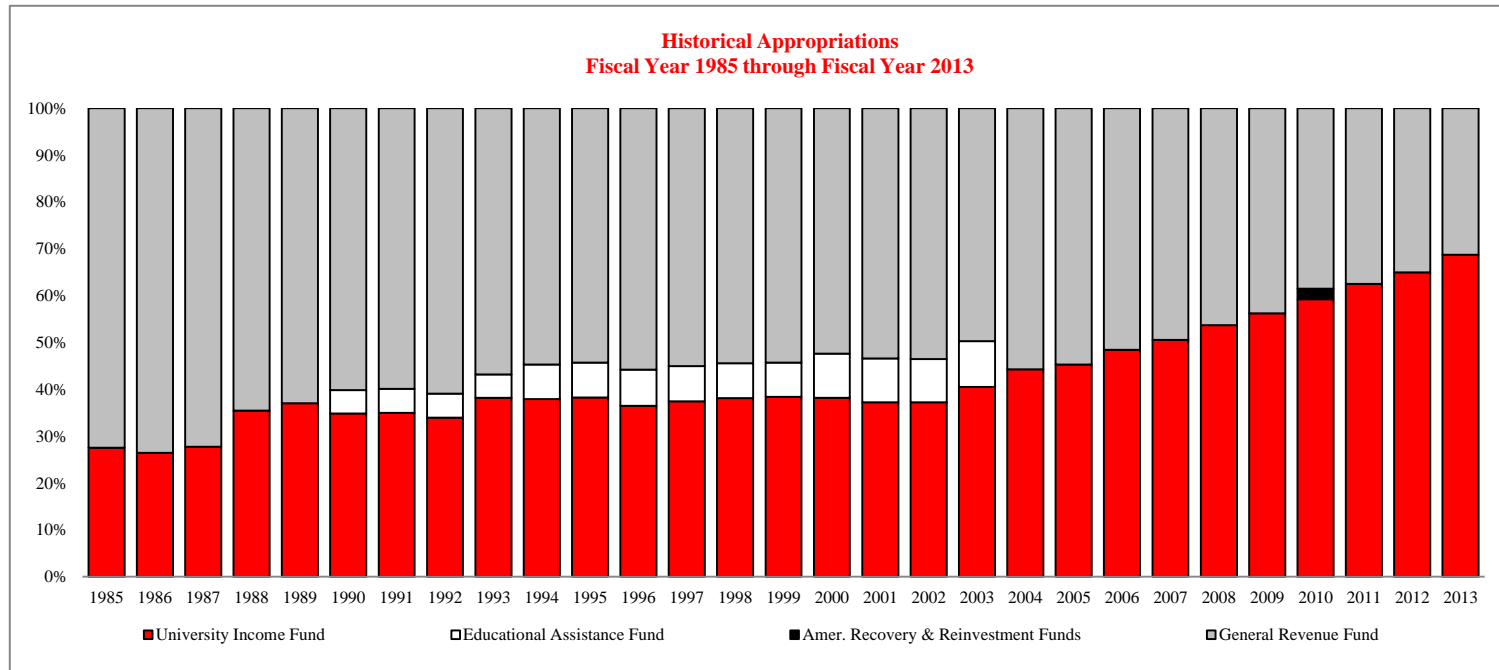
HISTORICAL APPROPRIATIONS ~ FISCAL YEARS 2009 through 2013

(dollars in thousands)

Historical Appropriations and University Income Fund for Operations and Grants by Fund Source¹

	<u>Fiscal Year 2009</u>	<u>Fiscal Year 2010</u>	<u>Fiscal Year 2011</u>	<u>Fiscal Year 2012</u>	<u>Fiscal Year 2013</u>
General Revenue Fund	\$85,096.4	\$80,452.0	\$79,789.5	\$78,874.4	\$74,082.4
American Recovery & Reinvestment Funds	N/A	\$4,644.0	N/A	N/A	N/A
University Income Fund	<u>109,351.4</u>	<u>123,806.4</u>	<u>132,900.0</u>	<u>146,299.0</u>	<u>162,888.6</u>
Total Appropriation	\$194,447.8	\$208,902.4	\$212,689.5	\$225,173.4	\$236,971.0

¹ Excludes Retirement





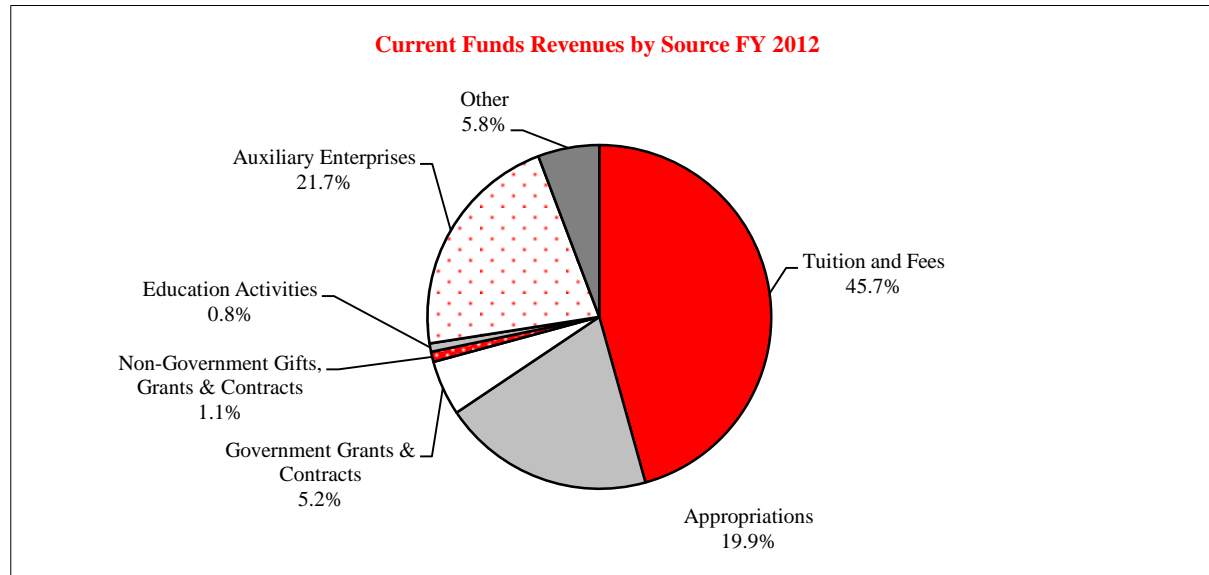
CURRENT FUNDS REVENUES BY SOURCE ~ FISCAL YEARS 2011 AND 2012

<u>Source</u>	<u>Fiscal Year 2011</u>		<u>Fiscal Year 2012</u>	
	<u>Amount (\$000)</u>	<u>Percent of Total</u>	<u>Amount (\$000)</u>	<u>Percent of Total</u>
Tuition and Fees	\$168,365	44.5	\$180,763	45.7
State Government Tax Funds Appropriations	79,790	21.1	78,874	19.9
Government Grants and Contracts				
Federal	13,356	3.5	16,823	4.3
State	3,075	0.8	3,685	0.9
Non-Governmental Gifts, Grants and Contracts	4,251	1.1	3,790	1.0
Sales & Services of Education Activities	2,570	0.7	3,103	0.8
Sales & Services of Auxiliary Enterprises	83,085	22.0	85,908	21.7
Other Sources	23,520	6.2	22,834	5.8
Total	\$378,012 ¹	100.0%	\$395,779 ²	100.0%

¹ Excludes \$86.5 million in Payments on Behalf of the University.

² Excludes \$100.4 million in Payments on Behalf of the University.

Source: Report of the Comptroller





RESOURCES

SPONSORED RESEARCH, INSTRUCTION, CREATIVE WORKS, & SERVICE

Submissions (Proposals submitted between July 1 and June 30)

	Fiscal Year 2009		Fiscal Year 2010		Fiscal Year 2011		Fiscal Year 2012	
	<u>Amount</u>	<u>Number</u>	<u>Amount</u>	<u>Number</u>	<u>Amount</u>	<u>Number</u>	<u>Amount</u>	<u>Number</u>
Research	\$32,886,935	157	\$36,475,342	150	\$29,348,293	110	\$30,151,664	126
Instruction	7,445,880	83	24,925,110	89	11,775,815	87	2,873,446	63
Public Service	10,137,560	41	7,719,732	33	12,331,096	35	4,744,392	43
Other	3,518,412	36	60,191,770	48	9,130,637	49	13,613,557	68
Total	\$53,988,787	317	\$129,311,954	320	\$62,585,841	281	\$51,383,059	300

Awards (Approved between July 1 and June 30)

	Fiscal Year 2009		Fiscal Year 2010		Fiscal Year 2011		Fiscal Year 2012	
	<u>Amount</u>	<u>Number</u>	<u>Amount</u>	<u>Number</u>	<u>Amount</u>	<u>Number</u>	<u>Amount</u>	<u>Number</u>
Research	\$6,040,193	76	\$5,863,106	77	\$4,258,749	53	\$6,122,194	63
Instruction	2,808,740	70	5,883,049	79	5,773,025	75	4,580,451	73
Public Service	6,320,333	39	6,128,299	32	6,796,720	40	8,542,593	48
Other	3,223,801	31	3,763,836	31	20,057,214	37	6,329,954	55
Total	\$18,393,067	216	\$21,638,290	219	\$36,885,708	205	\$25,575,192	239

Awards by Type of Funding

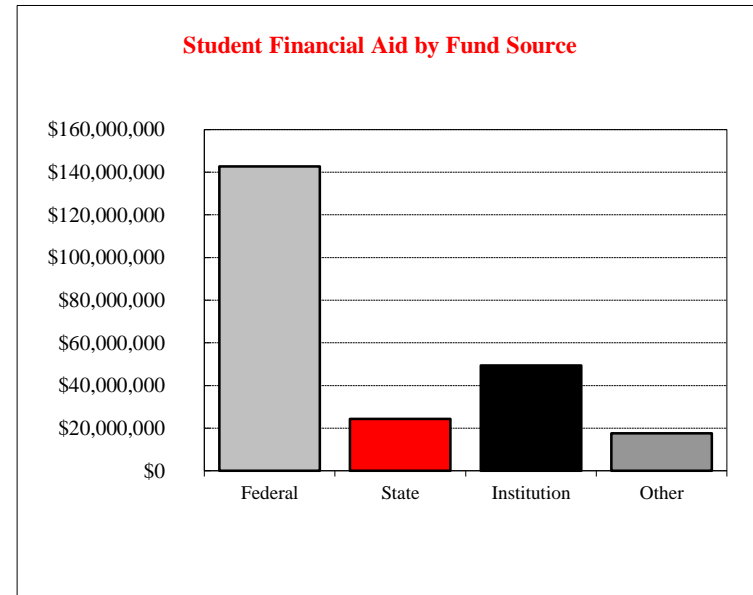
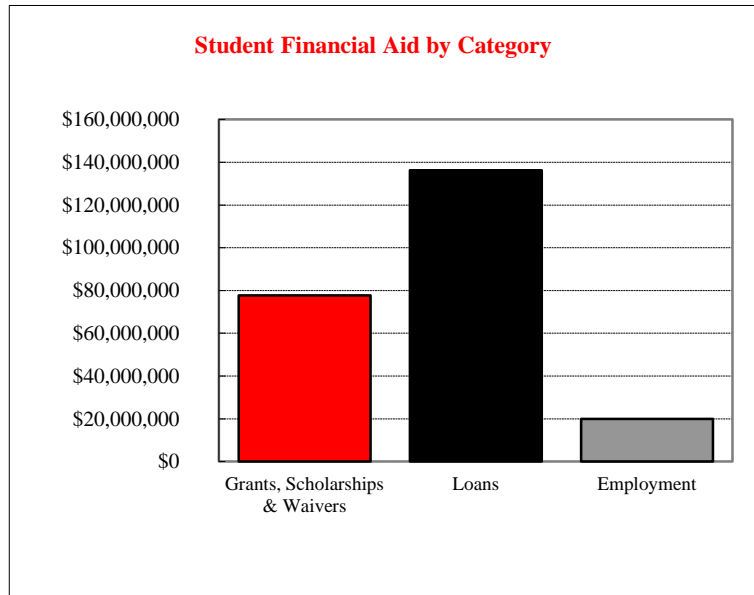
	Fiscal Year 2009		Fiscal Year 2010		Fiscal Year 2011		Fiscal Year 2012	
	<u>Amount</u>	<u>Percent</u>	<u>Amount</u>	<u>Percent</u>	<u>Amount</u>	<u>Percent</u>	<u>Amount</u>	<u>Percent</u>
Federal Awards	\$4,654,072	25.3	\$6,215,534	28.7	\$6,866,036	18.6	\$8,420,075	32.9
Federal Flow-through	4,491,864	24.4	5,930,779	27.4	19,789,014	53.6	4,118,110	16.1
State Awards	4,425,082	24.1	2,916,904	13.5	6,057,197	16.4	5,531,651	21.6
Corporate Awards	237,382	1.3	155,033	0.7	27,180	0.1	--	0.0
Other Awards	4,584,667	24.9	6,420,040	29.7	4,146,281	11.2	7,505,357	29.3
Total Awards	18,393,067	100.0	21,638,290	100.0	36,885,708	100.0	25,575,193	100.0



STUDENT FINANCIAL AID & INSTITUTIONAL SUPPORT ~ FISCAL YEAR 2012¹

Type	Fund Source				Total	Number Awarded
	Federal	State	Institution	Other		
Grants, Scholarships, and Waivers	\$20,899,850	\$24,280,635	\$30,188,740	\$2,350,877	\$77,720,102	23,096
Loans	\$121,029,533	--	--	\$15,241,385	\$136,270,918	27,439
Employment	\$796,459	--	\$19,138,231	--	\$19,934,690	6,313
Total	\$142,725,842	\$24,280,635	\$49,326,971	\$17,592,262	\$233,925,710	

Approximately 82.2 percent of all students who attend the University receive assistance through loans, scholarships, tuition waivers, grants, and employment.



¹ The Financial Aid Fiscal Year is Fall, Spring and Summer.



UNDERGRADUATE STUDENT TUITION & FEE RATES

Resident	School Year	Tuition Plan¹	Per Credit Hour		Full-Time (based on 15 credit hours per semester) Annual				
			Tuition Rate	Required Fees	Insurance required of all students taking 9 or more credit hours	Tuition	Required Fees	Total	
Current Rates	2012-13	New ²	\$335.00	\$75.60	\$408.00	\$10,050.00	\$2,268.00	\$12,726.00	
		Continuing 2 Yr	321.00	73.40	398.00	9,630.00	2,202.00	12,230.00	
		Continuing 3 Yr	301.00	68.23	398.00	9,030.00	2,046.90	11,474.90	
		Continuing 4 Yr	276.00	64.30	398.00	8,280.00	1,929.00	10,607.00	
		Continuing 5+ Yr	256.00	60.40	398.00	7,680.00	1,812.00	9,890.00	
	Historical Rates	2011-12	New ²	\$321.00	\$73.40	\$398.00	\$9,630.00	\$2,202.00	\$12,230.00
			Continuing 2 Yr	301.00	68.23	398.00	9,030.00	2,046.90	11,474.90
			Continuing 3 Yr	276.00	64.30	398.00	8,280.00	1,929.00	10,607.00
			Continuing 4 Yr	256.00	60.40	398.00	7,680.00	1,812.00	9,890.00
			Continuing 5+ Yr	233.00	56.91	398.00	6,990.00	1,707.30	9,095.30
2010-11		New ²	\$301.00	\$68.23	\$340.00	\$9,030.00	\$2,046.90	\$11,416.90	
		Continuing 2 Yr	276.00	64.30	340.00	8,280.00	1,929.00	10,549.00	
		Continuing 3 Yr	256.00	60.40	340.00	7,680.00	1,812.00	9,832.00	
		Continuing 4 Yr	233.00	56.91	340.00	6,990.00	1,707.30	9,037.30	
		Continuing 5+ Yr	205.00	52.45	340.00	6,150.00	1,573.50	8,063.50	
Non-Resident	Current Rates 2012-13	New ²	\$578.00	\$75.60	\$408.00	\$17,340.00	\$2,268.00	\$20,016.00	
		Continuing 2 Yr	553.00	73.40	398.00	16,590.00	2,202.00	19,190.00	
		Continuing 3 Yr	519.00	68.23	398.00	15,570.00	2,046.90	18,014.90	
		Continuing 4 Yr	477.00	64.30	398.00	14,310.00	1,929.00	16,637.00	
		Continuing 5+ Yr	477.00	60.40	398.00	14,310.00	1,812.00	16,520.00	
	Historical Rates	2011-12	New ²	\$553.00	\$73.40	\$398.00	\$16,590.00	\$2,202.00	\$19,190.00
			Continuing 2 Yr	519.00	68.23	398.00	15,570.00	2,046.90	18,014.90
			Continuing 3 Yr	477.00	64.30	398.00	14,310.00	1,929.00	16,637.00
			Continuing 4 Yr	477.00	60.40	398.00	14,310.00	1,812.00	16,520.00
			Continuing 5+ Yr	477.00	56.91	398.00	14,310.00	1,707.30	16,415.30
2010-11		New ²	\$519.00	\$68.23	\$340.00	\$15,570.00	\$2,046.90	\$17,956.90	
		Continuing 2 Yr	477.00	64.30	340.00	14,310.00	1,929.00	16,579.00	
		Continuing 3 Yr	477.00	60.40	340.00	14,310.00	1,812.00	16,462.00	
		Continuing 4 Yr	477.00	56.91	340.00	14,310.00	1,707.30	16,357.30	
		Continuing 5+ Yr	428.00	52.45	340.00	12,840.00	1,573.50	14,753.50	

¹ Freeze rates, for undergraduate tuition (in-state/out-of-state) and general fees, shall depend on qualified primary major(s)/sequence(s) carried within the individual's catalog year as of census day of the last undergraduate semester attended within the four continuous calendar years after being classified as first enrolled.

² New - Students enrolled for their first semester in a degree-seeking program and in attendance on census day.



RESOURCES

GRADUATE STUDENT TUITION & FEE RATES

Resident

		<u>Per Credit Hour</u>		<u>Full-Time (based on 9 credit hours per semester) Annual</u>			
		<u>Tuition Rate</u>	<u>Required Fees</u>	<u>Insurance required of all students</u>			
<u>Current Rates</u>	<u>School Year</u>			<u>taking 9 or more credit hours</u>	<u>Tuition</u>	<u>Required Fees</u>	<u>Total</u>
	2012-13	\$308.00	\$75.60	\$408.00	\$5,544.00	\$1,360.80	\$7,312.80
<u>Historical Rates</u>	2011-12	285.00	73.40	398.00	5,130.00	1,321.20	6,849.20
	2010-11	264.00	68.23	340.00	4,752.00	1,228.14	6,320.14
	2009-10	220.00	64.30	322.00	3,960.00	1,157.40	5,439.40
	2008-09	204.00	60.40	322.00	3,672.00	1,087.20	5,081.20
	2007-08	194.00	56.91	322.00	3,492.00	1,024.38	4,838.38
	2006-07	185.00	52.45	316.00	3,330.00	944.10	4,590.10
	2005-06	170.00	46.70	290.00	3,060.00	840.60	4,190.60
	2004-05	145.00	43.20	232.00	2,610.00	777.60	3,619.60

Non-Resident

		<u>Per Credit Hour</u>		<u>Full-Time (based on 9 credit hours per semester) Annual</u>			
		<u>Tuition Rate</u>	<u>Required Fees</u>	<u>Insurance required of all students</u>			
<u>Current Rates</u>	<u>School Year</u>			<u>taking 9 or more credit hours</u>	<u>Tuition</u>	<u>Required Fees</u>	<u>Total</u>
	2012-13	\$639.00	\$75.60	\$408.00	\$11,502.00	\$1,360.80	\$13,270.80
<u>Historical Rates</u>	2011-12	592.00	73.40	398.00	10,656.00	1,321.20	12,375.20
	2010-11	548.00	68.23	340.00	9,864.00	1,228.14	11,432.14
	2009-10	457.00	64.30	322.00	8,226.00	1,157.40	9,705.40
	2008-09	424.00	60.40	322.00	7,632.00	1,087.20	9,041.20
	2007-08	404.00	56.91	322.00	7,272.00	1,024.38	8,618.38
	2006-07	386.00	52.45	316.00	6,948.00	944.10	8,208.10
	2005-06	355.00	46.70	290.00	6,390.00	840.60	7,520.60
	2004-05	303.00	43.20	232.00	5,454.00	777.60	6,463.60

¹ New - Students enrolled for their first semester in a degree-seeking program and in attendance on census day.

² Fees charged for each credit hour up to and including 16 hours per semester - no additional fees charged for credit hours in excess of 16 hours per semester from Fall 2002 until Fall 2006. Currently fees are charged per credit hour carried.

	Fiscal Year				
	<u>2008</u>	<u>2009</u>	<u>2010</u>	<u>2011</u>	<u>2012</u>
<u>Patron Services and Usage</u>					
Building Usage Gate Count	496,841	510,777	348,500	354,327	748,279
Circulation (inside and outside of Milner)	211,773	233,036	158,480	127,510	148,802
Items Borrowed for ISU Patrons	6,828	12,757	14,092	22,263	23,742
Items Loaned to Other Libraries	10,120	23,129	26,645	28,933	2,881
Reference Transactions (in person, phone, text, email, IM)	30,263	38,875	45,034	44,737	32,686
Computer Lab Gate Count	95,783	130,120	145,484	114,823	124,862
Number of Library Instruction Sessions	775	792	719	734	627
Learners Receiving Library Instruction	15,845	16,868	15,364	17,129	13,685
Visits to Milner's Web Site ¹	78,245,944	82,048,681	77,650,777	590,143	805,735
<u>Collections</u>					
Total Volumes in Milner	1,610,271	1,602,003	1,603,102	1,612,815	1,622,355
Volumes Added	13,044	25,677	23,813	21,809	24,733
Volumes Withdrawn	51,014	33,945	9,376	7,909	9,245
e-Books	N/A	N/A	N/A	N/A	86,496
Electronic Serial Titles	38,395	54,502	71,194	68,294	81,448
Databases	N/A	N/A	N/A	N/A	244
Print Periodical Titles	2,541	2,093	1,917	2,112	1,927
Unique Titles among State of Illinois libraries	202,177	198,309	199,248	200,652	200,652
<u>Library Staffing</u>					
Library Faculty	30.0	33.5	33.0	30.0	30.0
Library Civil Service and Other Professional Staff	61.0	56.0	62.5	61.0	60.5
Library Student Assistants FTE	12.2	12.9	13.6	13.5	12.1
Total Library Staff	103.2	102.4	102.4	104.5	102.6

¹ Fiscal year 2011 reflects visits to the Library website, whereas previously it reflected visits to pages within the Library website.



**ILLINOIS STATE
UNIVERSITY**
Illinois' first public university

UNIVERSITY
2012
FactBook

Reference



UNDERGRADUATE PROGRAM INVENTORY ~ FALL 2012

CIP	Program	B.A.	B.S.	B.S.Ed.	B.M.Ed.
01.0000	Agriculture		x		
09.0101	Communication Studies	x	x		
09.0102	Mass Media	x	x		
09.0401	Journalism	x	x		
09.0902	Public Relations	x	x		
10.0301	Graphic Communications		x		
11.0103	Information Systems		x		
11.0701	Computer Science		x		
11.0901	Network & Telecom Management		x		
13.1001	Special Education		x	x	
13.1202	Elementary Education		x	x	
13.1203	Middle Level Teacher Education		x	x	
13.1209	Early Childhood Education		x	x	
13.1303	Business Teacher Education	x	x	x	
13.1307	Health Education		x	x	
13.1309	Technology & Engineering Education		x		
13.1312	Bachelor of Music Education				x
13.1314	Physical Education		x	x	
15.0503	Renewable Energy		x		
15.0612	Industrial Technology		x		
16.0501	German	x			
16.0901	French	x			
16.0905	Spanish	x			
19.0101	Family and Consumer Sciences	x	x		
23.0101	English	x			
24.0101	Interdisciplinary Studies	x	x		
24.0102	University Studies	x	x		
26.0101	Biological Sciences		x		
26.0202	Biochemistry and Molecular Biology		x		
27.0101	Mathematics	x	x		
31.0301	Recreation and Park Administration		x		
31.0505	Exercise Science		x		
38.0101	Philosophy	x			
40.0501	Chemistry		x		

CIP	Program	B.A.	B.S.	B.S.W.	B.F.A.	B.M.	B.S.N.	B.S.M.P.A.
40.0601	Geology		x					
40.0801	Physics		x					
42.0101	Psychology	x	x					
43.0104	Criminal Justice Sciences	x	x					
44.0701	Bachelor of Social Work			x				
45.0201	Anthropology	x	x					
45.0601	Economics	x	x					
45.0701	Geography	x	x					
45.1001	Political Science	x	x					
45.1101	Sociology	x	x					
50.0501	Theatre	x	x					
50.0701	Art	x	x					
50.0702	B.F.A. in Art				x			
50.0901	Music (Liberal Arts)	x	x					
50.0903	Music Performance					x		
50.9999	Arts Technology	x	x					
51.0204	Speech Pathology and Audiology		x					
51.0706	Health Information Management		x					
51.0913	Athletic Training		x					
51.1005	Medical Laboratory Science		x					
51.2202	Environmental Health		x					
51.2206	Safety		x					
51.3801	Nursing (BSN)						x	
52.0201	Business Administration		x					
52.0301	Accounting		x					
52.0301	Accountancy (BS/MPA)							x
52.0801	Finance		x					
52.1101	International Business	x	x					
52.1201	Business Information Systems		x					
52.1301	Management		x					
52.1401	Marketing		x					
52.1701	Insurance		x					
52.2001	Construction Management		x					
54.0101	History	x	x					



Masters Level

CIP	Program	M.A.	M.S.	M.S.Ed.	M.M.Ed.	M.S.W.	M.F.A.	M.Chem.Ed.	M.S.Chem.Ed.
01.0000	Agriculture		x						
09.0101	Communication	x	x						
11.0103	Information Systems		x						
13.0301	Curriculum and Instruction		x	x					
13.0401	Educational Administration		x	x					
13.0501	Instructional Tech. & Design		x						
13.1001	Special Education		x	x					
13.1102	College Student Personnel Admin.		x						
13.1312	Master of Music Education				x				
13.1315	Reading			x					
13.1323	Master of Chemistry Education							x	
13.1323	Master of Science in Chemistry Ed								x
15.0612	Technology		x						
16.0101	Languages, Literatures, & Cultures	x							
19.0101	Family and Consumer Sciences	x	x						
23.0101	English	x	x						
23.1301	Writing	x	x						
26.0101	Biological Sciences		x						
27.0101	Mathematics		x						
31.0501	Kinesiology and Recreation		x						
40.0501	Chemistry		x						
40.0699	Hydrogeology		x						
42.0101	Psychology	x	x						
42.2803	Clinical-Counseling Psychology	x	x						
43.0104	Criminal Justice Sciences	x	x						
44.0701	Master of Social Work				x				
45.0301	Archaeology	x	x						
45.0601	Applied Economics	x	x						
45.1001	Political Science	x	x						
45.1101	Sociology	x	x						
50.0501	Theatre (MA/MS)	x	x						
50.0501	M.F.A. in Theatre					x			
50.0701	Art	x	x						
50.0702	M.F.A. in Art					x			

Masters Level

CIP	Program	M.A.	M.S.	M.S.N.	M.M.	M.B.A.	B.S.M.P.A.
50.0901	Master of Music				x		
50.9999	Arts Technology		x				
51.0204	Speech Pathology and Audiology	x	x				
51.0204	Speech-Language Pathology	x	x				
51.3801	Nursing (MSN)			x			
52.0201	Business Administration					x	
52.0301	Master of Professional Accountancy						x
52.0301	Accountancy		x				
54.0101	History	x	x				

IBHE Approved Certificate Level

CIP	Program	P.B.	P.M.	S.S.P.	P.A./E.N.P.
13.0301	Alt. Route for Sec. Teacher Certification	x			
13.0402	Director of Special Education		x		
13.0409	Education Admin. & General Admin.		x		
13.0411	Education Admin. & Superintendent		x		
13.0499	Educ. Adm. & Chief School Bus. Official		x		
23.1301	Teaching of Writing High/Middle School	x			
25.0101	School Librarianship	x			
42.2805	School Psychology			x	
51.3805	Gerontological Nurse Practitioner				x
51.3805	Family Nurse Practitioner				x

Doctoral Level

CIP	Program	Au.D.	Ed.D.	Ph.D.
13.0301	Curriculum and Instruction		x	
13.0401	Educational Administration		x	x
13.1001	Special Education		x	
13.1311	Mathematics Education			x
23.0101	English Studies			x
26.0101	Biological Sciences			x
42.2805	School Psychology			x
51.0204	Audiology	x		
51.3808	PhD in Nursing			x



Illinois Board of Higher Education Comparison Group for Salary Studies

Institution	State
University of Alabama, Birmingham	AL
Northern Arizona University	AZ
University of California, Santa Cruz	CA
University of Northern Colorado	CO
Florida Atlantic University	FL
University of South Florida	FL
Georgia State University	GA
Illinois State University	IL
Ball State University	IN
Indiana State University, Terre Haute	IN
Indiana University, Indianapolis	IN
University of Louisville	KY
University of New Orleans	LA
Western Michigan University	MI
University of Missouri, Kansas City	MO
University of Southern Mississippi	MS
University of North Carolina, Greensboro	NC
Rutgers University, Camden Campus	NJ
SUNY at Albany	NY
Cleveland State University	OH
Ohio University, Athens	OH
University of Toledo	OH
University of South Dakota, Vermillion	SD
University of Memphis	TN
Texas A & M University, Commerce	TX
Texas Woman's University	TX
University of Houston, University Park	TX
University of North Texas	TX
University of Texas, Dallas	TX
University of Wisconsin, Milwaukee	WI

Illinois Board of Higher Education Peer Group

Institution	State
Illinois State University	IL
Ball State University	IN
Wichita State University	KS
Central Michigan	MI
Western Michigan University	MI
University of North Carolina, Charlotte	NC
University of North Carolina, Greensboro	NC
Bowling Green State University	OH
Miami University	OH
Portland State University	OR
Old Dominion	VA

Benchmark Group used for most Comparison Studies

Institution	State
University of California, Riverside	CA
University of California, Santa Cruz	CA
Illinois State University	IL
Ball State University	IN
University of North Carolina, Greensboro	NC
Bowling Green State University	OH
Miami University	OH
Clemson University	SC
University of Wisconsin, Milwaukee	WI



STUDENT TERMS

Census Day: The University's official date for enrollment. The first day of class following the 10th day of class in each semester.

Certificates: Illinois State University currently offers three types of certificates at the graduate level:

- **Graduate Certificate:** Requires a minimum of nine but no more than 17 semester hours of graduate courses beyond the bachelor's degree. This type of certificate is **not** approved/reviewed by the Illinois Board of Higher Education (IBHE).
- **Post-Baccalaureate Graduate Certificate:** Requires a minimum of 18 semester hours of graduate courses beyond the baccalaureate degree, but less than required for a masters' degree. This type of certificate is approved/reviewed by the IBHE.
- **Post-Master's Graduate Certificate:** Requires a minimum of 24 semester hours of graduate courses beyond the master's degree but less than a doctoral degree. This type of certificate is approved/reviewed by the IBHE.

CIP Codes: Classification of Instructional Programs (CIP) A federal coding system used to provide a taxonomic scheme that will support the accurate tracking, assessment, and reporting of fields of study and program completions activity.

Cohort: The number of new beginning freshmen in a given fall semester. Used in calculating retention of students returning for their second fall semester and in calculating University graduation rates.

Credit Hour: A standard unit of measuring course work; credit hours are assigned to a particular course and count toward graduation.

Degree Program: A program which has specific requirements and number of credits, including a common core for all students seeking a particular degree. Degree programs are approved through a curricular process through the Illinois Board of Higher Education.

Full-Time Enrollment: For undergraduate students – 12 or more credit hours; for graduate students nine or more credit hours per semester.

Full-Time Equivalent (FTE): Total number of credit hours divided by 15 for undergraduate students; and by nine for graduate students.

Grade Point Average (GPA): The total number of grade points divided by the total graded semester hours attempted at Illinois State University.

Graduation Rate: Total number of new beginning freshmen students who complete their degree within 6 years of normal time divided by the number in the original cohort.

Headcount: The count of each student enrolled at the University.

Interdisciplinary: A program or course that spans two or more academic disciplines.

Major or Program: A cohesive combination of courses, including introductory, intermediate, and advanced course work, that designates a student's primary area of specialization.

Minorities: Excludes White, Not Reported and Non-Resident Alien following IPEDS and the Department of Education categories.

Native Students: Students who start as new beginning freshmen at Illinois State University.

New Beginning Freshmen: First-time, first year students who have not attended any college since graduating from high school (includes students who attend a college or university the summer after high school graduation, students with advanced placement credits, and students who took courses for college credit while attending high school).

New Students: Students attending Illinois State University for the first time (Illinois State University baccalaureate recipients entering their first semester working on a second bachelor's degree are considered readmitted students).

Non-Degree Seeking: A student who has not been admitted to a program leading toward a degree; these include unclassified students, students-at-large, and students working toward a non-IBHE approved/reviewed graduate certificate.

Non-Resident: A student whose principal residence is not in Illinois.

Non-Resident Alien: International students who are neither a citizen nor a permanent resident of the United States.



STUDENT TERMS (CONTINUED)

On-and Off-Campus: Students are considered “off-campus” if all of their courses meet at a location other than a University facility; they are considered an “on-campus” student if any or all of their courses meet at a University facility.

Retention Rate: Number of new beginning freshmen who return for their second fall semester divided by the original cohort.

Semester: A semester at Illinois State is the 16-week academic session offered each fall and spring. The summer session is not considered a semester.

Show Rate: Ratio of students who enrolled compared to the number who were accepted.

Transfer Student: Students who previously attended one or more semesters at a community or four-year college after graduating from high school (whether or not any course work was completed).

Unclassified Students: A person who desires to take classes at the University without working toward a specific degree.

Yield Rate: Ratio of the number of students who were accepted compared to the number of students that applied.

EMPLOYEE TERMS

Administrative/Professional: Appointments primarily for the purpose of mission support and include a wide range of responsibilities.

- Administrative (A):** Employees with primary executive, administrative and managerial assignments. These assignments involve planning, organizing, managing and directing the university and its sub units with a reporting line of three levels from the President and a salary level of 55.

- Managerial (M):** These employees are considered to be primary policy decision making administrators who report directly to the President or to one of the Vice Presidents of the University. This group would include the President, Vice Presidents, Deans and Associate Vice Presidents.

- Professional (P):** All Administrative/Professional employees who are not designated as Administrative (A) or Managerial (M).

Civil Service: Civil Service positions are governed by the State Universities Civil Service System. Candidates must demonstrate their ability to perform by passing a test specifically designed for the job. Areas of Civil Service employment include professional, technical, clerical, crafts, and service. The civil service system has four classifications of employees:

- Exempt:** Excluded from overtime provisions of the Fair Labor Standards Act; typically managers and administrators.

- Non-Exempt:** Paid by the hour and eligible for overtime under provisions of the Fair Labor Standards Act.

- Negotiated:** Civil Service employees belonging to a union with a negotiated contract.

- Extra Help:** Hired to work without benefits for a limited time (up to 900 hours) and without requirement of a civil service examination.

Emeritus: Retired faculty with rank who continue employment at Illinois State University are accorded the privilege of retaining their professorial title after retirement with the added designation of the word "emeritus" or "emerita."

Faculty: Any Tenure-Track or Non-Tenure Track appointment, ranked or unranked, for the purpose of instruction, organized research, and/or public service in one of the academic (credit hour producing) departments and related areas.

Departmental: Faculty teaching in an academic department.

Non-departmental: Faculty in a non-academic department such as University College instructors.

Lab School Associates: Appointments that do not hold rank in an academic department and are assigned primarily to Thomas Metcalf School or University High School.

Library Faculty: Can hold academic rank and are assigned primarily to the Library.

Full-time: A work schedule of 37.5 to 40 hours per week; considered to be 100 percent.



EMPLOYEE TERMS (CONTINUED)

Minorities: Excludes White, Not Reported and Non-Resident Alien. Following IPEDS and the Department of Education categories.

Non-Tenure Track: Appointments for full and part-time positions are for a specific purpose and for a specified period of time appropriate to that purpose. No time served in any of the non-tenure track titles counts toward fulfillment of a probationary period leading to tenure.

Part-time: A work schedule of less than 100 percent.

Tenure: Tenure is an important means of protecting the rights of members of the faculty to freedom of inquiry, research, discourse, teaching, learning, and publications. Tenure entails the faculty member's obligation to strive continuously to improve competence and to cooperate with colleagues in an effort to improve the quality of scholarship and teaching at the institution. The freedom and security provided through academic tenure are fundamental to the success of a university in fulfilling its obligations. After the expiration of a probationary period, faculty have permanent or continuous tenure, and their service should be terminated only for adequate cause, except in the case of retirement for age, or under extraordinary circumstances because of financial exigencies.

Tenured/Tenure Track: Tenure is granted by the University under the authority granted to the President by the Board of Trustees. Tenure appointments are held only in academic departments or similar academic units.

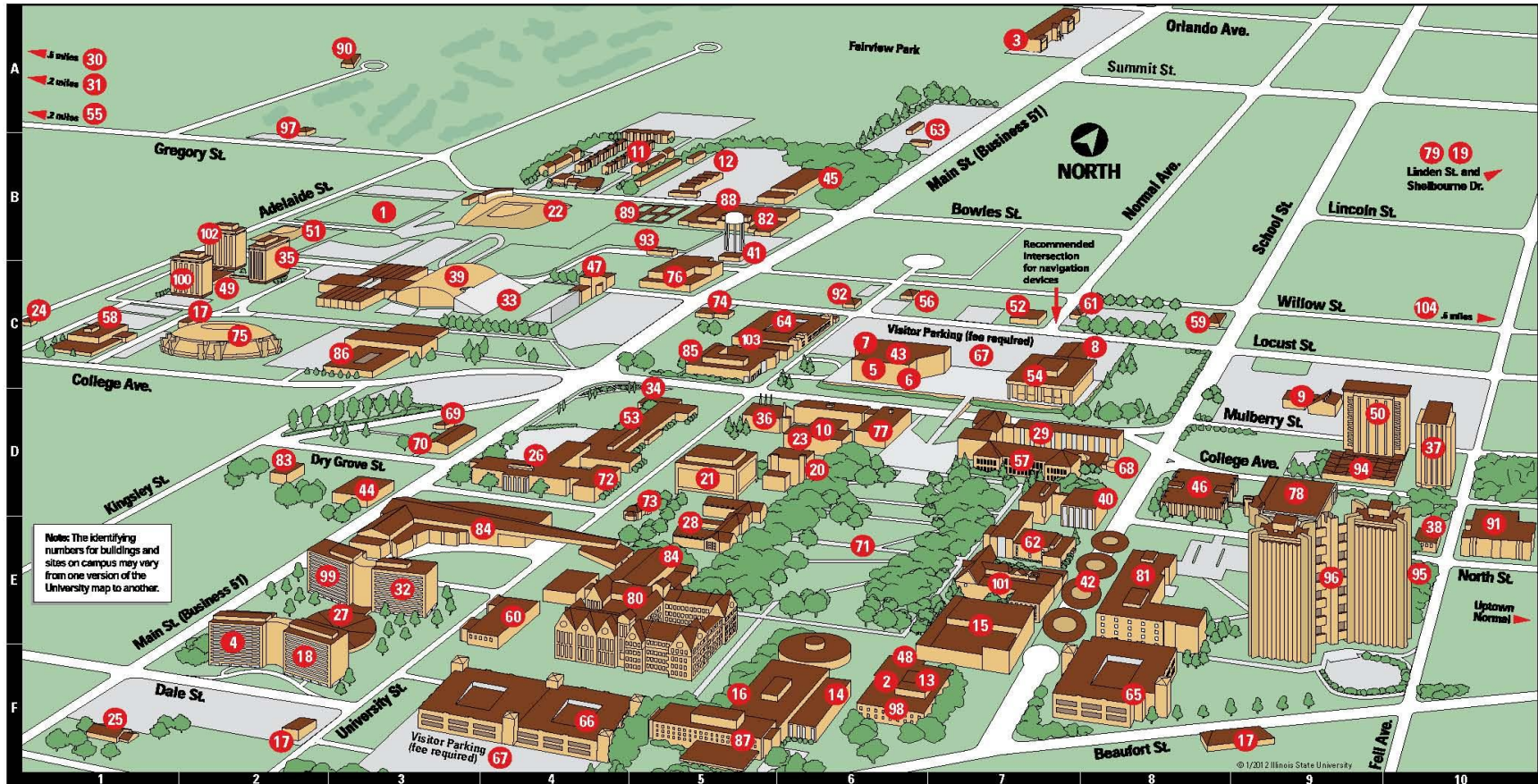
Rank: The academic ranks that are conferred for tenure at Illinois State University are: Professor, Associate Professor, and Assistant Professor. Promotion within the academic ranks is recommended by the Provost to the President for approval.

OTHER TERMS

IBHE: Illinois Board of Higher Education, the statewide planning and coordinating board for higher education in Illinois, approves/reviews degree programs, provides budget recommendations to the Governor and General Assembly, administers a variety of grant programs, approves operating authority for independent institutions, engages in master planning, and maintains comprehensive higher education databases.

IPEDS: The Integrated Postsecondary Education Data System conducted by National Center of Education Statistics (NCES). IPEDS began in 1986 and involves annual data collections. Survey data are required from all postsecondary institutions that have a Program Participation Agreement (PPA) with the Office of Postsecondary Education, U.S. Department of Education. IPEDS also requests limited data from approximately 3,000 other schools offering postsecondary education programs.

CAMPUS MAP



Note: The identifying numbers for buildings and sites on campus may vary from one version of the University map to another.



ILLINOIS STATE UNIVERSITY
Illinois' first public university

- | | | | | |
|-----------------------------------|--------------------------------------|---|--|--|
| 1 Adelaide Soccer Field B3 | 15 Center for the Performing Arts E7 | 38 Honors Program E10 | 61 Office of Sustainability C8 | 84 Student Fitness Center and McCormick Hall E3-E5 |
| 2 Allen Theatre F6 | 16 Center for the Visual Arts F5 | 39 Horton Field House C3 | 62 Old Union E7 | 85 Student Services Building C5 |
| 3 Alumni Center A7 | 17 Chiller Plant C2, F2, and F9 | 40 Hovey Hall D8 | 63 Parking and Transportation Building, Bill Waller B7 | 86 Turner Hall C3 |
| 4 Altlin Hall E2 | 18 Colby Hall F2 | 41 Hudelson Building B5 | 64 Parking Garage, North University Street C6 | 87 University Galleries F5 |
| 5 Bone Student Center C6 | 19 Construction Administration B10 | 42 In Exchange E8 | 65 Parking Garage, School Street F8 | 88 University High School B5 |
| 6 Braden Auditorium C6 | 20 Cook Hall D9 | 43 InfoCentre C6 | 66 Parking Garage, South University Street F4 | 89 University High School Tennis Courts B5 |
| 7 Brown Ballroom C6 | 21 DeGarmo Hall D5 | 44 Instructional Technology and Development Center D3 | 67 Parking, Visitor C7 and F4 | 90 University (President's) Residence A3 |
| 8 Bowling and Billiards Center C8 | 22 Duffy Bass Field B4 | 45 John Green Food Service Building B6 | 68 Planetarium D8 | 91 Uptown Crossing E10 |
| 9 Campus Religious Center D9 | 23 Edwards Hall D6 | 46 Julian Hall D8 | 69 Professional Development Annex D3 | 92 Vidette Building C6 |
| 10 Capen Auditorium D6 | 24 Eyestone School Museum C1 | 47 Kaufman Football Building C4 | 70 Professional Development Building D3 | 93 Vitro Center B5 |
| 11 Cardinal Court B5 | 25 Facilities Planning Building F1 | 48 Kemp Recital Hall F6 | 71 Quad E6 | 94 Vrooman Center D9 |
| 12 Carter Harris Building B5 | 26 Fairchild Hall D4 | 49 Linkins Dining Center C2 | 72 Rachel Cooper D4 | 95 Watterson Dining Center E10 |
| 13 Centennial East F7 | 27 Feeney Dining Center E3 | 50 Manchester Hall D10 | 73 Rambo House D5 | 96 Watterson Towers E9 |
| 14 Centennial West F6 | 28 Fell Hall E5 | 51 Marian Kneer Softball Stadium B2 | 74 Recreation Services Building C5 | 97 Weibring Golf Club A2 |
| | 29 Felmley Hall D7 | 52 MCN Nursing Simulation Laboratory C7 | 75 Redbird Arena C2 | 98 Westhoff Theatre F6 |
| | 30 Gregory Street Property A1 | 53 Metcalf School D5 | 76 Ropp Agriculture Building C5 | 99 Whitten Hall E3 |
| | 31 Gregory Street Complex A1 | 54 Milner Library C7 | 77 Schroeder Hall D6 | 100 Wilkins Hall C2 |
| | 32 Hamilton Hall E3 | 55 Motorcycle Driving Range A1 | 78 Science Laboratory Building D9 | 101 Williams Hall E7 |
| | 33 Hancock Stadium C4 | 56 Motorcycle Safety Program Office C7 | 79 Shelbourne Apartments B10 | 102 Wright Hall E2 |
| | 34 Hayden Auditorium D5 | 57 Moulton Hall D7 | 80 State Farm Hall of Business E5 | 103 211 North University Street Building C5 |
| | 35 Haynie Hall C2 | 58 Nelson Smith Building C1 | 81 Stevenson Hall E8 | 104 500 North Beech Street Building C10 |
| | 36 Heating Plant D5 | 59 Office of Energy Management C8 | 82 Stroud Auditorium B6 | |
| | 37 Hewett Hall D10 | 60 Office of Residential Life Building E4 | 83 Student Accounts Building D2 | |